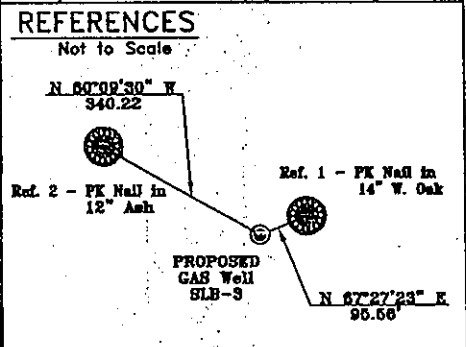
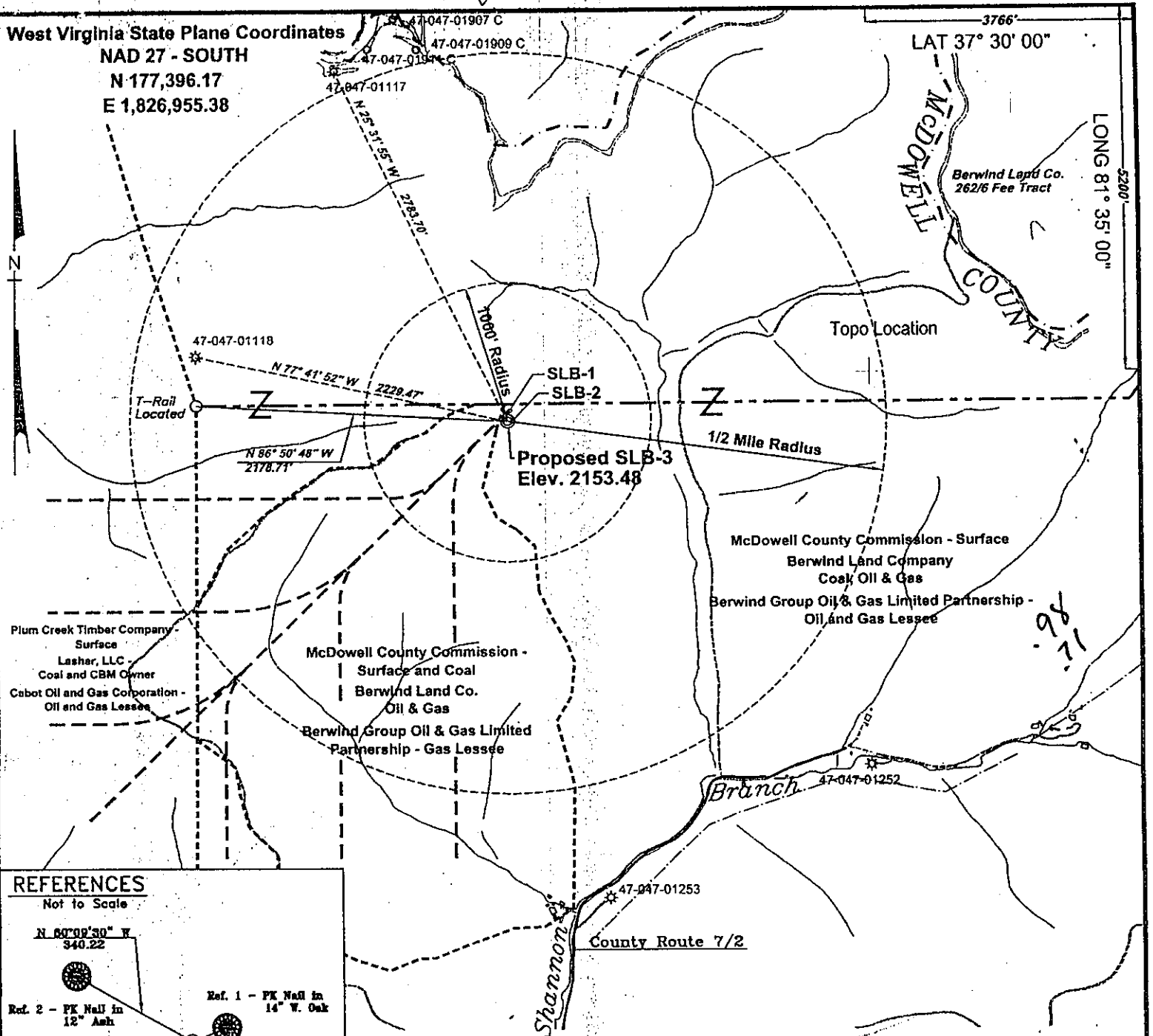


West Virginia State Plane Coordinates
 NAD 27 - SOUTH
 N 177,396.17
 E 1,826,955.38

LAT 37° 30' 00"

LONG 81° 35' 00"

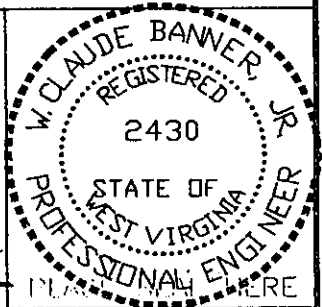


Notes:
 No known domestic water supplies within 1000 feet of SLB-3
 (+) Denotes location of well on USGS map.
 Property Information taken from McDowell Co. Tax Records

FILE No. Cdx-2002
 DIRECTORY C:\Cdx-2002\SLB-Wells
 Drawing Number Plat-SLB-3
 SCALE 1" = 1000'
 MINIMUM DEGREE OF ACCURACY 1 : 2500
 PROVEN SOURCE OF ELEVATION GPS - GLOBAL POSITIONING SYSTEM

I THE UNDERSIGNED, HEREBY CERTIFY THAT THIS PLAT IS CORRECT TO THE BEST OF MY KNOWLEDGE AND BELIEF AND SHOWS ALL THE INFORMATION REQUIRED BY LAW AND THE REGULATIONS ISSUED AND PRESCRIBED BY THE DEPARTMENT OF MINES.

(SIGNED) W. Claude Banner Jr.
 R.P.E. 2430 R.P.S. PLA



STATE OF WEST VIRGINIA
DIVISION OF ENVIRONMENTAL PROTECTION
OFFICE OF OIL AND GAS
CHARLESTON, WV

DATE JUNE 26, 2002
 OPERATOR'S WELL No. SLB-3
 API WELL No. 47 - 047 - 16810
 STATE COUNTY PERMIT

WELL TYPE: OIL GAS CBM LIQUID INJECTION WASTE DISPOSAL
 (IF "GAS") PRODUCTION X STORAGE DEEP SHALLOW

LOCATION: ELEVATION 2153.48 WATER SHED UNNAMED TRIBUTARY OF SHANNON BRANCH OF TUG FORK
 DISTRICT BROWNS CREEK COUNTY McDOWELL
 QUADRANGLE WELCH, WV

SURFACE OWNER McDOWELL COUNTY COMMISSION ACREAGE 1449.21
 CBM ROYALTY OWNER BERWIND LAND COMPANY LEASE ACREAGE
LASHER, LLC
 LEASE No.

PROPOSED WORK: DRILL X CONVERT DRILL DEEPER REDRILL FRACTURE OR STIMULATE PLUG OFF OLD FORMATION PERFORATE NEW FORMATION OTHER PHYSICAL CHANGE IN WELL (SPECIFY)

PLUG AND ABANDON CLEAN OUT AND REPLUG
 TARGET FORMATION POCAHONTAS NO. 3 & PENN. COALS ESTIMATED DEPTH 1356' JUL 26 2002
 WELL OPERATOR CDX GAS, LLC DESIGNATED AGENT JOE ZUPANICK
 ADDRESS P.O. BOX 609 ADDRESS P.O. BOX 609
PINEVILLE, WV 24874 PINEVILLE, WV 24874

(Baileysville 272)

Mcdowell 16810

State of West Virginia
Division of Environmental Protection
Section of Oil & Gas

Well Operator's Report of Well Work

Farm name: Pocahontas Land Corp.

Operator Well No: SLB-3

Location: Elevation: 2153.48

Quadrangle: Welch

District: Browns Creek

County: McDowell

Latitude: 3766 Feet South of 37 Deg. 30 Min. 00 Sec.
Longitude: 5200 Feet West of 81 Deg. 35 Min. 00 Sec.

Company: CDX Gas, LLC
P.O. Box 609
Pineville, WV 24874

RECEIVED
Office of Oil & Gas
Office of Chief
OCT - 9 2003
WV Department of
Environmental Protection
Cement
Fill up

Agent: JOSEPH A. ZUPANICK

Inspector: Ronnie Scott
Permit Issued: 7/25/02
Well Work commenced: 4/29/03
Well Work completed: 8/7/03
Verbal plugging
Permission granted on:
Rotary x Cable _____ Rig
Total depth (ft) 1454'
Fresh water depths (ft) N/A
Salt water depths (ft) N/A
Is coal being mined in the area (Y/N)? Y
Coal depths (ft): 537,570,654,965,1313,1372,1396

Casing & Tubing Size	Used in Drilling	Left in Well	
13 3/8"	28	28	20cuft
9 5/8"	258	258	81cuft
7"	1237	1237	186cuft
2 7/8"	1392	1392	Hanging

OPEN FLOW DATA

Producing formation Pocahontas No.3 seam
 Gas: Initial open flow N/A Mcf/d Oil: Pay zone depth 1372(ft)
 Final open flow N/A Mcf/d Initial open flow _____ Bbl/d
 Time of open flow between initial and final tests: _____ hours
 Final open flow _____ Bbl/d
 Static rock pressure _____ psig (surface pressure) after _____ hours

Second Producing formation _____
 Gas: Initial open flow _____ Mcf/d Oil: Pay zone depth _____ (ft)
 Final open flow _____ Mcf/d Initial open flow _____ Bbl/d
 Time of open flow between initial and final tests: _____ hours
 Final open flow _____ Bbl/d
 Static rock pressure _____ psig (surface pressure) after _____ hours

Note: ON BACK OF THIS FORM, PUT THE FOLLOWING: 1) DETAILS OF PERFORATED INTERVALS, FRACTURING OR STIMULATING, PHYSICAL CHANGE, ETC. 2) THE WELL LOG WHICH IS A SYSTEMATICK DETAILED GEOLOGICAL RECORD OF ALL FORMATIONS, INCLUDING COAL ENCOUNTERED BY THE WELLBORE.

Steven Pauley
For: CDX Gas LLC
By: Steven Pauley
Date: 10-3-03

McDow 1681 C

NOV 14 2003

Operator: SLB-3
 API No. 47- 047-01681 C
 Location: McDowell County

Details of Perforated Intervals, Fracturing or Stimulation, Physical Change, Etc. – N/A

Well Log & Geologic Record - Depths from G.L.

Lithology	Depth in feet	
	Top	Bottom
Casing	0	31
Sandstone	31	48
Shale	48	66
Sandy Shale	66	78
Shale	78	152
Sandy Shale	152	235
Shale	235	243
Sandy Shale	243	255
Shale	255	267
Sandy Shale	267	275
Shale	275	325
Sandy Shale	325	386
Shale	386	427
Sandy Shale	427	461
Shale	461	468
Sandy Shale	468	497
Shale	497	537
Coal	537	538
Shale	538	551
Sandy Shale	551	568
Shale	568	570
Coal	570	572
Shale	572	579
Sandy Shale	579	588
Shale	588	604
Sandy Shale	604	654
Coal	654	656
Sandy Shale	656	769
Sandstone	769	808
Shale	808	841
Sandy Shale	841	894
Sandstone	894	907
Shale	907	965
Coal	965	968
Shale w/coal streaks	968	1019
Sandy Shale	1019	1084
Sandstone	1084	1110
Shale	1110	1119
Sandstone	1119	1145
Sandstone	1145	1192
Sandy Shale	1192	1274
Shale	1274	1294
Sandstone	1294	1313

Coal	1313	1317
Sandy Shale	1317	1361
Shale	1361	1372
Coal	1372	1376
Sandy Shale	1376	1396
Coal	1396	1397
Sandy Shale	1397	1431
Sandstone	1431	1454
End of Hole		

NOV 1 2003

McDow 1681 C