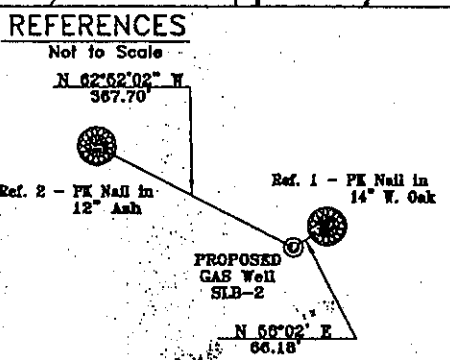
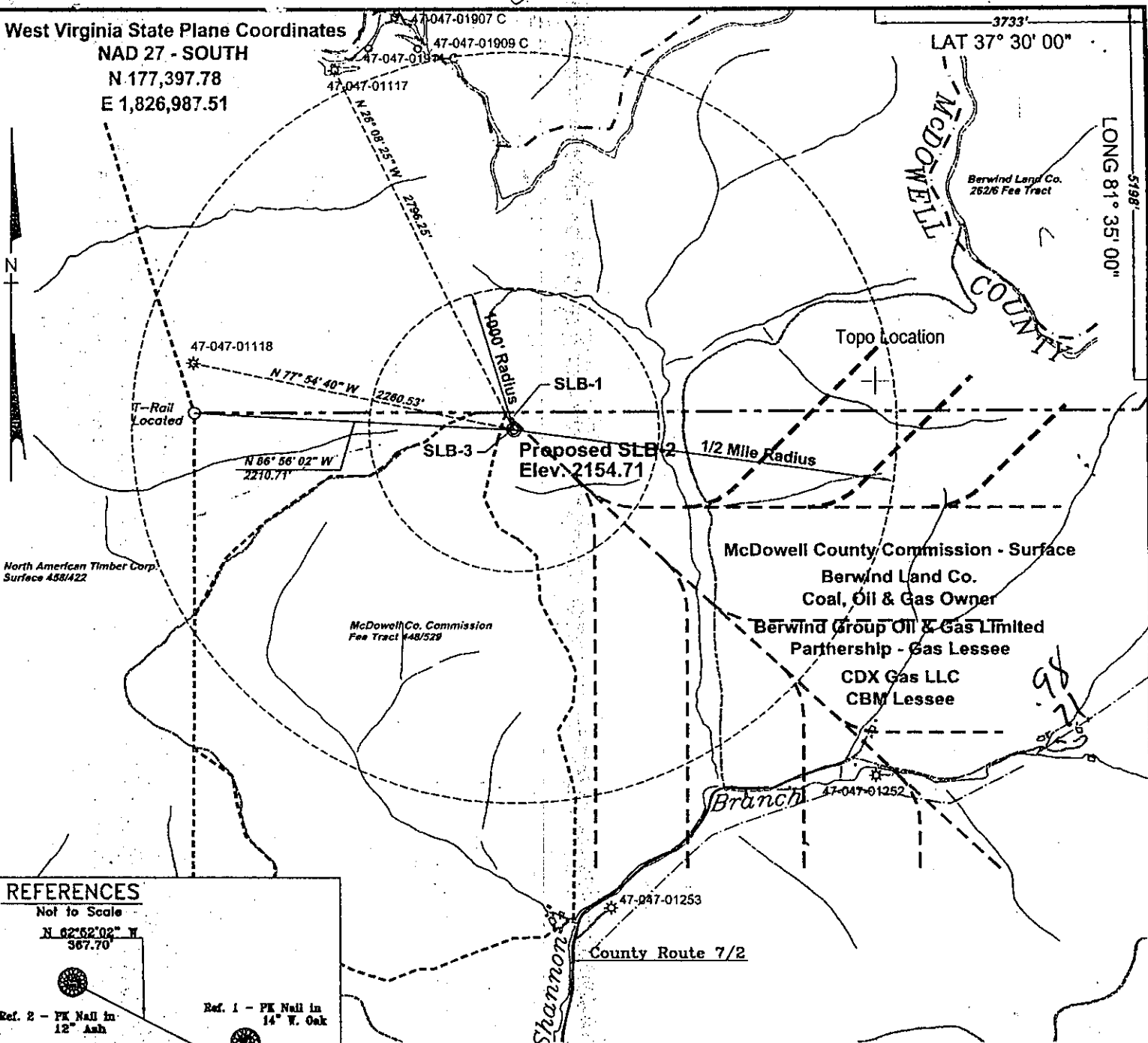


West Virginia State Plane Coordinates
 NAD 27 - SOUTH
 N 177,397.78
 E 1,826,987.51

3733'
 LAT 37° 30' 00"

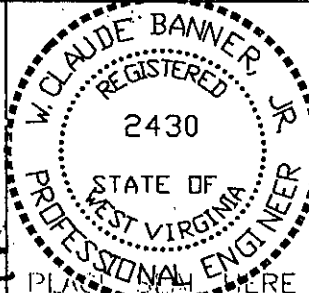
5198'
 LONG 81° 35' 00"



Notes:
 No known domestic water supplies within 1000 feet of SLB-2
 (+) Denotes location of well on USGS map.
 Property Information taken from McDowell Co. Tax Records

FILE No. Cdx-2002
 DIRECTORY C:\Cdx-2002\SLB-Wells
 Drawing Number Plat-SLB-2
 SCALE 1" = 1000'
 MINIMUM DEGREE OF ACCURACY 1 : 2500
 PROVEN SOURCE OF ELEVATION GPS - GLOBAL POSITIONING SYSTEM

I THE UNDERSIGNED, HEREBY CERTIFY THAT THIS PLAT IS CORRECT TO THE BEST OF MY KNOWLEDGE AND BELIEF AND SHOWS ALL THE INFORMATION REQUIRED BY LAW AND THE REGULATIONS ISSUED AND PRESCRIBED BY THE DEPARTMENT OF MINES.
 (SIGNED) W. Claude Banner Jr.
 R.P.E. 2430 R.P.S. _____



STATE OF WEST VIRGINIA
DIVISION OF ENVIRONMENTAL PROTECTION
OFFICE OF OIL AND GAS
CHARLESTON, WV

DATE JUNE 26, 2002
 OPERATOR'S WELL No. SLB-2
 API WELL No. 47 - 047 - 1680C
 STATE COUNTY PERMIT

WELL TYPE: OIL GAS CBM LIQUID INJECTION WASTE DISPOSAL
 (IF "GAS") PRODUCTION X STORAGE DEEP SHALLOW

LOCATION: ELEVATION 2154.71 WATER SHED UNNAMED TRIBUTARY OF SHANNON BRANCH OF TUG FORK
 DISTRICT BROWNS CREEK COUNTY McDOWELL
 QUADRANGLE WELCH, WV

SURFACE OWNER McDOWELL COUNTY COMMISSION ACREAGE 1449.21
 CBM ROYALTY OWNER BERWIND LAND COMPANY LEASE ACREAGE _____
 LEASE No. _____

PROPOSED WORK: DRILL X CONVERT DRILL DEEPER REDRILL FRACTURE OR
 STIMULATE PLUG OFF OLD FORMATION PERFORATE NEW
 FORMATION OTHER PHYSICAL CHANGE IN WELL (SPECIFY) _____

PLUG AND ABANDON _____ CLEAN OUT AND REPLUG _____
 TARGET FORMATION POCAHONTAS NO. 3 & PENN. COALS ESTIMATED DEPTH 1357' JUL 25 2002
 WELL OPERATOR CDX GAS, LLC DESIGNATED AGENT JOE ZUPANICK
 ADDRESS P.O. BOX 609 ADDRESS PINEVILLE, WV 24874
PINEVILLE, WV 24874

MCDOWELL 1680C

State of West Virginia
Division of Environmental Protection
Section of Oil & Gas

Handwritten initials

Well Operator's Report of Well Work

Farm name: Pocahontas Land Corp.

Operator Well No: SLB-2

Location: Elevation: 2159.231

Quadrangle: Welch

District: Browns Creek

County: McDowell

Latitude: 3733 Feet South of 37 Deg. 30 Min. 00 Sec.

Longitude: 5198 Feet West of 81 Deg. 35 Min. 00 Sec.

Company: CDX Gas, LLC
P.O. Box 609
Pineville, WV 24874

RECEIVED
Office of Oil & Gas
Office of Chief
OCT - 9 2003

Agent: JOSEPH A. ZUPANICK

Inspector: Ronnie Scott
Permit Issued: 7/25/02
Well Work commenced: 5/10/03
Well Work completed: 7/22/03

Casing & Tubing Size	Used in Drilling	Left in Well	Concrete Plug
13 3/8"	28	28	19 cuft
9 5/8"	254	254	80 cuft
7"	1227	1227	184 cuft
2 7/8"	1390	1390	Hanging

WV Department of Environmental Protection

Verbal plugging
Permission granted on:
Rotary x Cable _____ Rig

Total depth (ft) _____
Fresh water depths (ft) N/A
Salt water depths (ft) N/A

Is coal being mined in the area (Y/N)? Y
Coal depths (ft): 529, 562, 646, 957, 1305, 1364, 1390, 1392

OPEN FLOW DATA

Producing formation Pocahontas No.3 seam

Gas: Initial open flow N/A Mcf/d
Final open flow N/A Mcf/d

Pay zone depth 1364(ft)
Oil: Initial open flow _____ Bbl/d
Final open flow _____ Bbl/d

Time of open flow between initial and final tests: _____ hours

Static rock pressure _____ psig (surface pressure) after _____ hours

Second Producing formation _____
Gas: Initial open flow _____ Mcf/d
Final open flow _____ Mcf/d

Pay zone depth _____ (ft)
Oil: Initial open flow _____ Bbl/d
Final open flow _____ Bbl/d

Time of open flow between initial and final tests: _____ hours

Static rock pressure _____ psig (surface pressure) after _____ hours

Note: ON BACK OF THIS FORM, PUT THE FOLLOWING: 1) DETAILS OF PERFORATED INTERVALS, FRACTURING OR STIMULATING, PHYSICAL CHANGE, ETC. 2) THE WELL LOG WHICH IS A SYSTEMATIC DETAILED GEOLOGICAL RECORD OF ALL FORMATIONS, INCLUDING COAL ENCOUNTERED BY THE WELLBORE.

Steven Pauley
For: CDX Gas, LLC

By: *Steven Pauley*

Date: 10-3-03

Mc Dow 1680

2003 1 4 2003

Operator: SLB-2
 API No. 47- 047-01680 C
 Location: McDowell County

Details of Perforated Intervals, Fracturing or Stimulation, Physical Change, Etc. – N/A

Well Log & Geologic Record - Depths from G.L.

Lithology	Depth in feet	
	Top	Bottom
Casing	0	23
Sandstone	23	40
Shale	40	58
Sandy Shale	58	70
Shale	70	144
Sandy Shale	144	227
Shale	227	235
Sandy Shale	235	247
Shale	247	259
Sandy Shale	259	267
Shale	267	318
Sandy Shale	318	378
Shale	378	419
Sandy Shale	419	453
Shale	453	460
Sandy Shale	460	489
Shale	489	529
Coal	529	530
Shale	530	543
Sandy Shale	543	560
Shale	560	562
Coal	562	564
Shale	564	571
Sandy Shale	571	579
Shale	579	596
Sandy Shale	596	646
Coal	646	648
Sandy Shale	648	761
Sandstone	761	800
Shale	800	833
Sandy Shale	833	886
Sandstone	886	899
Shale	899	957
Coal	957	960
Shale w/coal streaks	960	1011
Sandy Shale	1011	1076
Sandstone	1076	1102
Shale	1102	1111
Sandstone	1111	1137
Sandstone	1137	1184
Sandy Shale	1184	1266
Shale	1266	1286
Sandstone	1286	1305
Coal	1305	1309

Sandy Shale	1309	1353
Shale	1353	1364
Coal	1364	1368
Shale	1368	1376
Sandstone	1376	1381
Shale	1381	1390
Coal	1390	1391
Shale	1391	1392
Coal	1392	1393
Shale	1393	1401
Sandy Shale	1401	1414
End		

NOV 14 2003

Mc Dow 1680 C