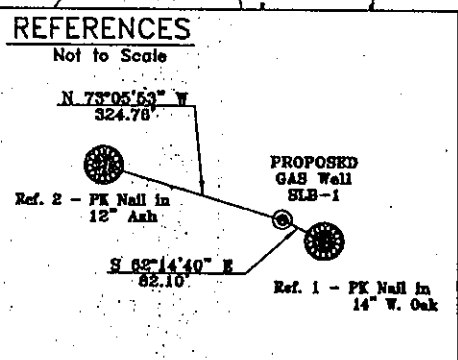
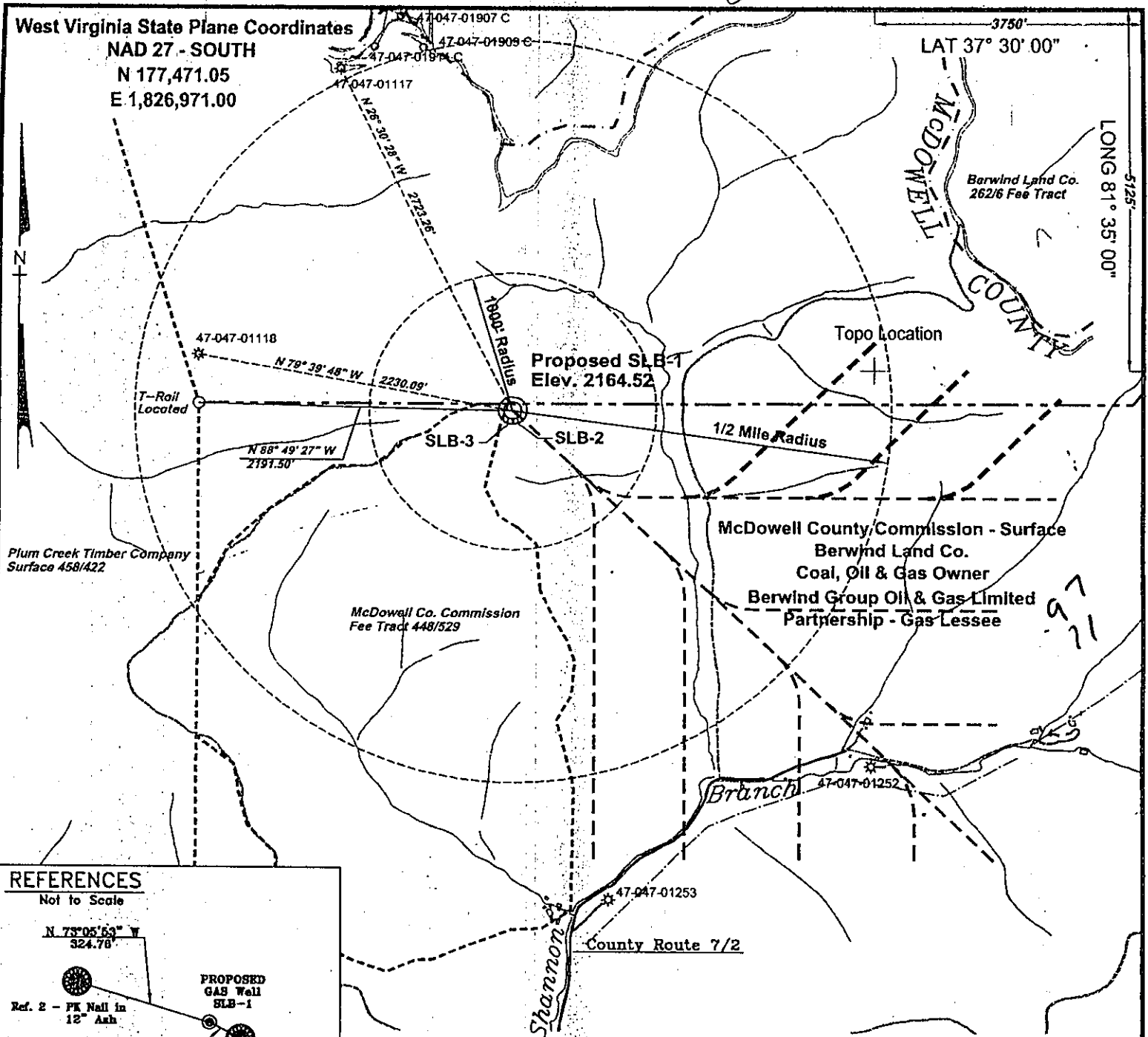


West Virginia State Plane Coordinates  
 NAD 27 - SOUTH  
 N 177,471.05  
 E 1,826,971.00

3750'  
 LAT 37° 30' 00"

5125'  
 LONG 81° 35' 00"

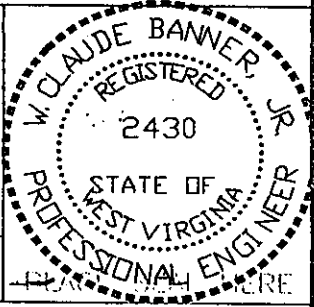


**Notes:**  
 No known domestic water supplies within 1000 feet of SLB-1  
 (+) Denotes location of well on USGS map.  
 Property Information taken from McDowell Co. Tax Records

FILE No. Cdx-2002  
 DIRECTORY C:\Cdx-2002\SLB-Wells  
 Drawing Number Plat-SLB-1  
 SCALE 1" = 1000'  
 MINIMUM DEGREE OF ACCURACY 1 : 2500  
 PROVEN SOURCE OF ELEVATION GPS - GLOBAL POSITIONING SYSTEM

I THE UNDERSIGNED, HEREBY CERTIFY THAT THIS PLAT IS CORRECT TO THE BEST OF MY KNOWLEDGE AND BELIEF AND SHOWS ALL THE INFORMATION REQUIRED BY LAW AND THE REGULATIONS ISSUED AND PRESCRIBED BY THE DEPARTMENT OF MINES.

(SIGNED) W. Claude Banner, Jr.  
 R.P.E. 2430 R.P.S.



**STATE OF WEST VIRGINIA**  
**DIVISION OF ENVIRONMENTAL PROTECTION**  
**OFFICE OF OIL AND GAS**  
**CHARLESTON, WV**

DATE JUNE 26, 2002  
 OPERATOR'S WELL No. SLB-1  
 API WELL No. 47 - 047 - 1679C  
 STATE COUNTY PERMIT

WELL TYPE: OIL GAS CBM LIQUID INJECTION WASTE DISPOSAL  
 (IF "GAS") PRODUCTION X STORAGE DEEP SHALLOW

LOCATION: ELEVATION 2164.52 WATER SHED UNNAMED TRIBUTARY OF SHANNON BRANCH OF TUG FORK  
 DISTRICT BROWNS CREEK COUNTY McDOWELL  
 QUADRANGLE WELCH, WV

SURFACE OWNER McDOWELL COUNTY COMMISSION ACREAGE 1449.21  
 CBM ROYALTY OWNER BERWIND LAND COMPANY LEASE ACREAGE \_\_\_\_\_  
 LEASE No. \_\_\_\_\_

PROPOSED WORK: DRILL X CONVERT DRILL DEEPER REDRILL FRACTURE OR  
 STIMULATE PLUG OFF OLD FORMATION PERFORATE NEW  
 FORMATION OTHER PHYSICAL CHANGE IN WELL (SPECIFY) \_\_\_\_\_

PLUG AND ABANDON \_\_\_\_\_ CLEAN OUT AND REPLUG \_\_\_\_\_  
 TARGET FORMATION POCAHONTAS NO. 3 & PENN. COALS ESTIMATED DEPTH 1367' JUL 26 2002  
 WELL OPERATOR CDX GAS, LLC DESIGNATED AGENT JOE ZUPANICK  
 ADDRESS P.O. BOX 609 ADDRESS P.O. BOX 609  
PINEVILLE, WV 24874 PINEVILLE, WV 24874

(BAILEYSVILLE 272)

McDOW 1679C

State of West Virginia  
Division of Environmental Protection  
Section of Oil & Gas

*Handwritten initials*

Well Operator's Report of Well Work

Farm name: Pocahontas Land Corp.

Operator Well No: SLB-1

Location: Elevation: 2158.81

Quadrangle: Welch

District: Browns Creek

County: McDowell

Latitude: 3750 Feet South of 37 Deg. 30 Min. 00 Sec.  
Longitude: 5125 Feet West of 81 Deg. 35 Min. 00 Sec.

Company: CDX Gas, LLC  
P.O. Box 609  
Pineville, WV 24874

Agent: JOSEPH A. ZUPANICK

Inspector: Ronnie Scott  
Permit Issued: 7/25/02  
Well Work commenced: 5/20/03  
Well Work completed: 8/7/03

Verbal plugging  
Permission granted on:  
Rotary x Cable \_\_\_\_\_ Rig

Total depth (ft) 1201'  
Fresh water depths (ft) N/A  
Salt water depths (ft) N/A

Is coal being mined in the area (Y/N)? Y  
Coal depths (ft): 529,562,646,957

RECEIVED  
Office of Oil & Gas  
Office of Chief  
OCT - 9 2003  
WV Department of  
Environmental Protection

Casing & Tubing Size	Used in Drilling	Left in Well	Cement Fill up
20"	21'	21'	32
13 3/8"	258'	258	172
9 5/8"	751	751	235
7"	1164	1164	Hanging

OPEN FLOW DATA

Producing formation Non-producer  
Gas: Initial open flow N/A Mcf/d  
Final open flow N/A Mcf/d  
Time of open flow between initial and final tests: \_\_\_\_\_ hours  
Static rock pressure \_\_\_\_\_ psig (surface pressure) after \_\_\_\_\_ hours

Pay zone depth \_\_\_\_\_ (ft)  
Oil: Initial open flow \_\_\_\_\_ Bbl/d  
Final open flow \_\_\_\_\_ Bbl/d

Second Producing formation \_\_\_\_\_  
Gas: Initial open flow \_\_\_\_\_ Mcf/d  
Final open flow \_\_\_\_\_ Mcf/d  
Time of open flow between initial and final tests: \_\_\_\_\_ hours  
Static rock pressure \_\_\_\_\_ psig (surface pressure) after \_\_\_\_\_ hours

Pay zone depth \_\_\_\_\_ (ft)  
Oil: Initial open flow \_\_\_\_\_ Bbl/d  
Final open flow \_\_\_\_\_ Bbl/d

Note: ON BACK OF THIS FORM, PUT THE FOLLOWING: 1) DETAILS OF PERFORATED INTERVALS, FRACTURING OR STIMULATING, PHYSICAL CHANGE, ETC. 2) THE WELL LOG WHICH IS A SYSTEMATICK DETAILED GEOLOGICAL RECORD OF ALL FORMATIONS, INCLUDING COAL ENCOUNTERED BY THE WELLBORE.

Steven Pauley  
For: CDX Gas, LLC  
By: Steven Pauley  
Date: 10-3-03

*Mc Dow 1679 C*

NOV 14 2003

Operator: SLB-1  
 API No. 47-047-01679 C  
 Location: McDowell County

Details of Perforated Intervals, Fracturing or Stimulation, Physical Change, Etc. -- N/A

Well Log & Geologic Record - Depths from G.L..

Lithology	Depth in feet	
	Top	Bottom
Casing	0	23
Sandstone	23	40
Shale	40	58
Sandy Shale	58	70
Shale	70	144
Sandy Shale	144	227
Shale	227	235
Sandy Shale	235	247
Shale	247	259
Sandy Shale	259	267
Shale	267	318
Sandy Shale	318	378
Shale	378	419
Sandy Shale	419	453
Shale	453	460
Sandy Shale	460	489
Shale	489	529
Coal	529	530
Shale	530	543
Sandy Shale	543	560
Shale	560	562
Coal	562	564
Shale	564	571
Sandy Shale	571	579
Shale	579	596
Sandy Shale	596	646
Coal	646	648
Sandy Shale	648	761
Sandstone	761	800
Shale	800	833
Sandy Shale	833	886
Sandstone	886	899
Shale	899	957
Coal	957	960
Shale w/coal streaks	960	1011
Sandy Shale	1011	1076
Sandstone	1076	1102
Shale	1102	1111
Sandstone	1111	1137
Sandstone	1137	1184
Sandy Shale	1184	1201
End		