

WEST VIRGINIA STATE PLANE COORDINATES

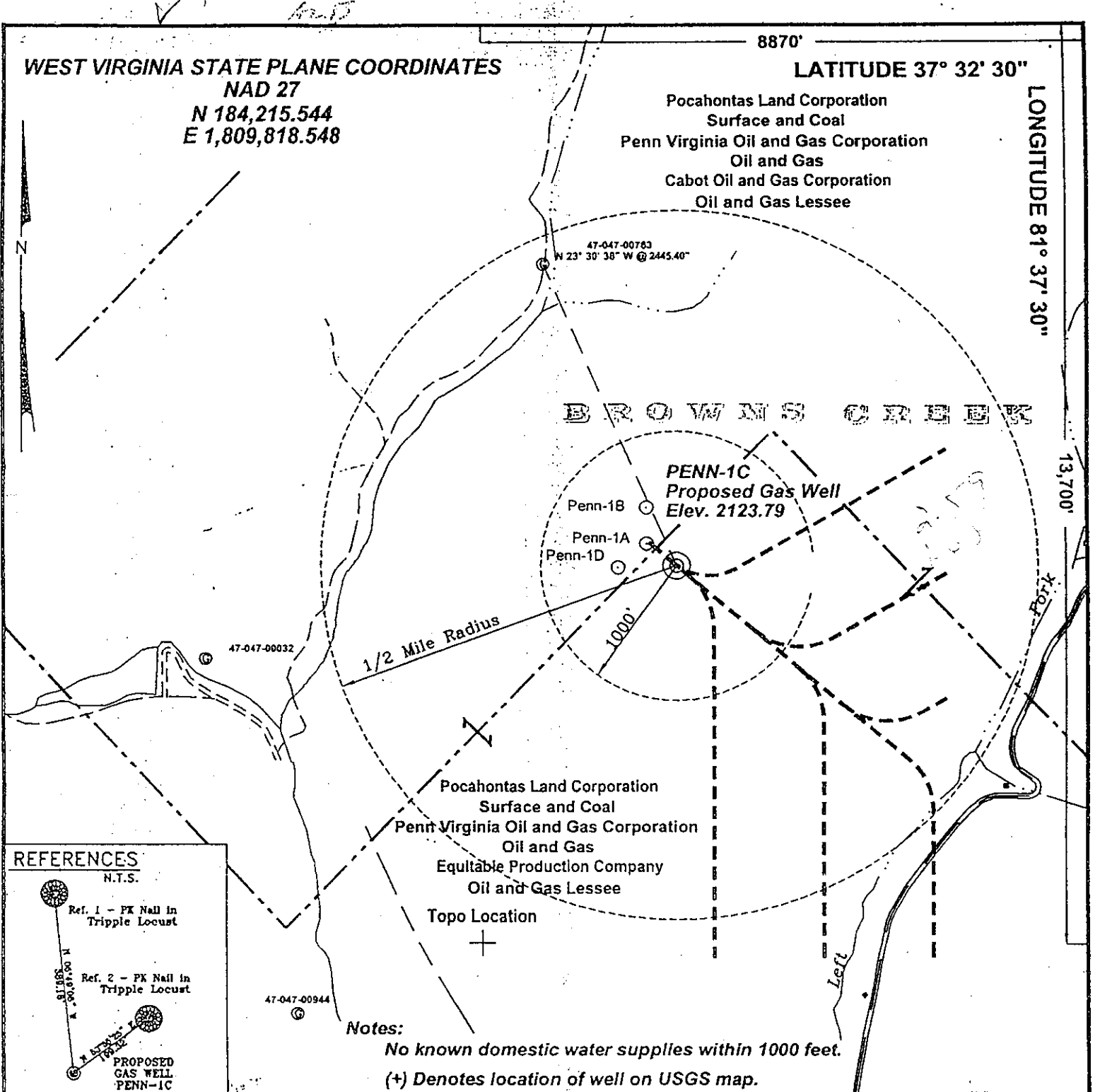
NAD 27
N 184,215.544
E 1,809,818.548

8870'

LATITUDE 37° 32' 30"

LONGITUDE 81° 37' 30"

Pocahontas Land Corporation
Surface and Coal
Penn Virginia Oil and Gas Corporation
Oil and Gas
Cabot Oil and Gas Corporation
Oil and Gas Lessee



REFERENCES

N.T.S.

Ref. 1 - FK Nail in
Tripple Locust

Ref. 2 - FK Nail in
Tripple Locust

PROPOSED
GAS WELL
PENN-1C

Notes:

No known domestic water supplies within 1000 feet.

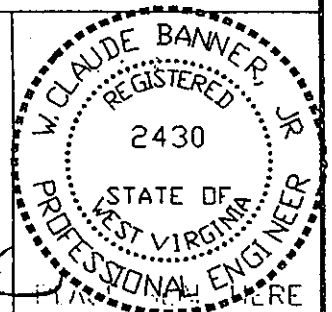
(+) Denotes location of well on USGS map.

FILE No. Clients CDX
DRAWING NAME 1140-02-005
DRAWING NAME Well 1C
SCALE 1" = 1000'
MINIMUM DEGREE OF
ACCURACY 1 : 2500
PROVEN SOURCE OF
ELEVATION GPS - GLOBAL
POSITIONING SYSTEM

I THE UNDERSIGNED, HEREBY CERTIFY THAT THIS PLAT IS CORRECT TO THE BEST OF MY KNOWLEDGE AND BELIEF AND SHOWS ALL THE INFORMATION REQUIRED BY LAW AND THE REGULATIONS ISSUED AND PRESCRIBED BY THE DEPARTMENT OF MINES.

(SIGNED)

W. Claude Banner, Jr.
R.P.E. 2430 R.P.S.



**STATE OF WEST VIRGINIA
DIVISION OF ENVIRONMENTAL PROTECTION
OFFICE OF OIL AND GAS
NITRO, WV**

DATE April 29, 2002
OPERATOR'S WELL No. PENN-1C
API WELL No. 47 - 047 - 01655C
STATE COUNTY PERMIT

WELL TYPE: OIL GAS CBM LIQUID INJECTION WASTE DISPOSAL
(IF "GAS") PRODUCTION X STORAGE DEEP SHALLOW
LOCATION: ELEVATION 2123.79' WATER SHED LEFT FORK OF TUG FORK
DISTRICT BROWNS CREEK COUNTY McDOWELL
QUADRANGLE BAILEYSVILLE, WV

SURFACE OWNER POCAHONTAS LAND CORPORATION ACREAGE 5,522.72
CBM ROYALTY OWNER PENN VIRGINIA OIL AND GAS CORPORATION LEASE ACREAGE 5,522.72

LEASE No. _____

PROPOSED WORK: DRILL X CONVERT DRILL DEEPER REDRILL FRACTURE OR
STIMULATE PLUG OFF OLD FORMATION PERFORATE NEW
FORMATION OTHER PHYSICAL CHANGE IN WELL (SPECIFY)

PLUG AND ABANDON CLEAN OUT AND REPLUG
TARGET FORMATION POCA NO. 3 AND PENN. COALS
WELL OPERATOR CDX GAS, LLC ESTIMATED DEPTH 1448'
ADDRESS P.O. BOX 609 DESIGNATED AGENT JOSEPH ZUPANICK
PINEVILLE, WV 24874 ADDRESS P.O. BOX 609
PINEVILLE, WV 24874

JUN 07 2002

Mc Dow 1655C

State of West Virginia
Division of Environmental Protection
Section of Oil & Gas

Well Operator's Report of Well Work

Farm name: Pocahontas Land Corp. Operator Well No: Penn-1C

Location: Elevation: 2123.79' Quadrangle: Baileysville

District: Browns Creek County: McDowell

Latitude: 13,700 Feet South of 37 Deg. 32 Min. 30 Sec.
Longitude: 8870 Feet West of 81 Deg. 37 Min. 30 Sec.

Company: CDX Gas, LLC
P.O. Box 609
Pineville, WV 24874

Agent: JOSEPH A. ZUPANICK

Inspector: RONNIE SCOTT
Permit Issued: 06/05/02
Well Work commenced: 7/13/02
Well Work completed: 12/15/02

Verbal plugging
Permission granted on:
Rotary x Cable _____ Rig

Total depth (ft) 1464.93
Fresh water depths (ft) N/A
Salt water depths (ft) N/A

Is coal being mined in the area (Y/N)? Y
Coal depths (ft): 341', 409', 708', 1065', 1353', 1362', 1402'

Casing & Tubing Size	Used in Drilling	Left in Well	Cement Fill up
13 3/8"	42'	42'	Surface
9 5/8"	750'	750'	Surface
7"	1015'	1015'	Surface

OPEN FLOW DATA

Producing formation Pocahontas No. 3 Seam Pay zone depth (ft) 1402'
Gas: Initial open flow N/A Mcf/d Oil: Initial open flow _____ Bbl/d
Final open flow N/A Mcf/d Final open flow _____ Bbl/d
Time of open flow between initial and final tests: _____ hours

Static rock pressure _____ psig (surface pressure) after _____ hours

Second Producing formation Pocahontas No.4 Seam Pay zone depth (ft) 1362'
Gas: Initial open flow N/A Mcf/d Oil: Initial open flow _____ Bbl/d
Final open flow N/A Mcf/d Final open flow _____ Bbl/d
Time of open flow between initial and final tests: _____ hours

Static rock pressure _____ psig (surface pressure) after _____ hours

Note: ON BACK OF THIS FORM, PUT THE FOLLOWING: 1) DETAILS OF PERFORATED INTERVALS, FRACTURING OR STIMULATING, PHYSICAL CHANGE, ETC. 2) THE WELL LOG WHICH IS A SYSTEMATICK DETAILED GEOLOGICAL RECORD OF ALL FORMATIONS, INCLUDING COAL ENCOUNTERED BY THE WELLBORE.

Steven Pauley
For: CDX Gas, LLC
By: Steven Pauley
Date: 2-21-03

MAR 28 2003

Mc Dow 1655 C

Details of Perforated Intervals, Fracturing or Stimulation, Physical Change, Etc.

N/A

Well Log & Geologic Record - Depths from K.B.

Formation	Top	Bottom
Overburden	0	5
Sandy Shale	5	97
Shale	97	111
Sandy Shale	111	157
Shale	157	216
Sandy Shale	216	227
Shale	227	280
Sandy Shale	280	310
Shale	310	341
Coal	341	342
Shale	342	346
Sandy Shale	346	392
Shale	392	409
Coal	409	410
Shale	410	469
Sandy Shale	469	510
Shale	510	585
Sandy Shale	585	645
Shale	645	660
Sandy Shale	660	708
Coal	708	711
Sandstone	711	755
Sandy Shale	755	838
Sandstone	838	915
Sandy Shale	915	995
Sandstone	995	1018
Sandy shale	1018	1065
Coal	1065	1069.5
Sandy Shale	1069.5	1090
Shale	1090	1130
Sandy Shale	1130	1168
Shale	1168	1180
Sandy Shale	1180	1220

Conti.

Sandstone	1220	1280
Sandy Shale	1280	1332
Shale	1332	1353
Coal	1353	1356
Sandy Shale	1356	1362
Coal	1362	1365.5
Shale	1365.5	1370
Sandy Shale	1370	1392
Shale	1392	1402
Coal	1402	1404
Shale	1404	1420
Sandy Shale	1420	1442
Shale	1442	1456

MAR 28 2003

Mc Dow 1655 C