

WEST VIRGINIA STATE PLANE COORDINATES
NAD 27
N 184,380.246
E 1,809,599.937

9090'

LATITUDE 37° 32' 30"

LONGITUDE 81° 37' 30"

Pocahontas Land Corporation
Surface and Coal
Penn Virginia Oil and Gas Corporation
Oil and Gas
Cabot Oil and Gas Corporation
Oil and Gas Lessee

47-047-0076
N 20° 01' 00" W D 2211.27

PENN-1A
Proposed Gas Well
Elev. 2,126.83

Penn-1B
Penn-1D
Penn-1C

47-047-00032

47-047-00944

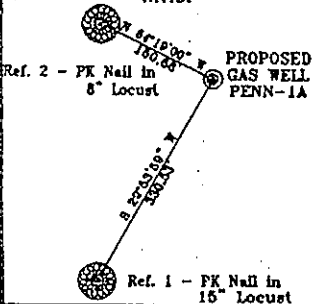
Notes:

No known domestic water supplies within 1000 feet.

(+) Denotes location of well on USGS map.

REFERENCES

N.T.S.



Topo Location

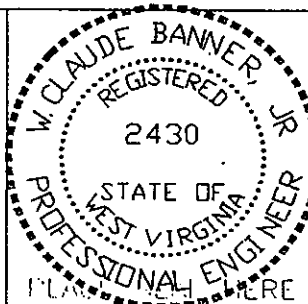
Left

Pocahontas Land Corporation
Surface and Coal
Penn Virginia Oil and Gas Corporation
Oil and Gas
Equitable Production Company
Oil and Gas Lessee

FILE No. Clients\CDX
DRAWING NAME \1140-02-005\
DRAWING NAME Well 1A
SCALE 1" = 1000'
MINIMUM DEGREE OF
ACCURACY 1 : 2500
PROVEN SOURCE OF:
ELEVATION GPS - GLOBAL
POSITIONING SYSTEM

I THE UNDERSIGNED, HEREBY CERTIFY THAT THIS PLAT IS CORRECT TO THE BEST OF MY KNOWLEDGE AND BELIEF AND SHOWS ALL THE INFORMATION REQUIRED BY LAW AND THE REGULATIONS ISSUED AND PRESCRIBED BY THE DEPARTMENT OF MINES.

(SIGNED) W. Claude Banner, Jr.
R.P.E. 2430 R.P.S.



STATE OF WEST VIRGINIA
DIVISION OF ENVIRONMENTAL PROTECTION
OFFICE OF OIL AND GAS
NITRO, WV

DATE April 29, 2002
OPERATOR'S WELL No. PENN-1A
API WELL No. 47 - 047 - 016530
STATE COUNTY PERMIT

WELL TYPE: OIL GAS CBM LIQUID INJECTION WASTE DISPOSAL
(IF "GAS") PRODUCTION X STORAGE DEEP SHALLOW
LOCATION: ELEVATION 2,126.83 WATER SHED LEFT FORK OF TUG FORK
DISTRICT BROWNS CREEK COUNTY McDOWELL
QUADRANGLE BAILEYSVILLE, WV

SURFACE OWNER POCAHONTAS LAND CORPORATION ACREAGE 5,522.72
CBM ROYALTY OWNER PENN VIRGINIA OIL AND GAS CORPORATION LEASE ACREAGE 5,522.72

LEASE No. _____

PROPOSED WORK: DRILL X CONVERT DRILL DEEPER REDRILL FRACTURE OR
STIMULATE PLUG OFF OLD FORMATION PERFORATE NEW
FORMATION OTHER PHYSICAL CHANGE IN WELL (SPECIFY) _____

PLUG AND ABANDON CLEAN OUT AND REPLUG

TARGET FORMATION POCA NO. 3 AND PENN. COALS

WELL OPERATOR CDX GAS, LLC

ADDRESS P.O. BOX 609

PINEVILLE, WV 24874

ESTIMATED DEPTH 1451'

DESIGNATED AGENT JOSEPH ZUPANICK

ADDRESS P.O. BOX 609

PINEVILLE WV 24874

JUN 07 2002

Mc Dow 1653 C

AP

State of West Virginia
Division of Environmental Protection
Section of Oil & Gas

Well Operator's Report of Well Work

Farm name: Pocahontas Land Corp.

Operator Well No: Penn-1A

Location: Elevation: 2126.83

Quadrangle: Baileysville

District: Browns Creek

County: McDowell

Latitude: 13500 Feet South of 37 Deg. 32 Min. 30 Sec.
Longitude: 9090' Feet West of 81 Deg. 37 Min. 30 Sec.

Company: CDX Gas, LLC
P.O. Box 609
Pineville, WV 24874

Agent: JOSEPH A. ZUPANICK

Inspector: RONNIE SCOTT
Permit Issued: 06/05/02
Well Work commenced: 7/22/02
Well Work completed: 12/15/02
Verbal plugging
Permission granted on:
Rotary x Cable _____ Rig
Total depth (ft) 879.82
Fresh water depths (ft) N/A
Salt water depths (ft) N/A
Is coal being mined in the area (Y/N)? Y
Coal depths (ft): 218', 344', 415', 638', 775', 805'

Casing & Tubing Size	Used in Drilling	Left in Well	Cement Fill up
16"	60'	60'	Surface
13 3/8"	60'	60'	Surface
9 5/8"	752'	752'	Surface
7"	863'	863'	Surface

MAR 28 2003

OPEN FLOW DATA

Producing formation Non Producer
Gas: Initial open flow N/A Mcf/d
Final open flow N/A Mcf/d
Time of open flow between initial and final tests: _____ hours
Static rock pressure _____ psig (surface pressure) after _____ hours

Pay zone depth (ft)
Oil: Initial open flow _____ Bbl/d
Final open flow _____ Bbl/d

Second Producing formation _____
Gas: Initial open flow _____ Mcf/d
Final open flow _____ Mcf/d
Time of open flow between initial and final tests: _____ hours
Static rock pressure _____ psig (surface pressure) after _____ hours

Pay zone depth (ft)
Oil: Initial open flow _____ Bbl/d
Final open flow _____ Bbl/d

Note: ON BACK OF THIS FORM, PUT THE FOLLOWING: 1) DETAILS OF PERFORATED INTERVALS, FRACTURING OR STIMULATING, PHYSICAL CHANGE, ETC. 2) THE WELL LOG WHICH IS A SYSTEMATICK DETAILED GEOLOGICAL RECORD OF ALL FORMATIONS, INCLUDING COAL ENCOUNTERED BY THE WELLBORE.

Steven Pauley
For: CDX Gas, LLC
By: *Steven Pauley*
Date: 2-21-03

MCDOWELL 1653 C

MAR 28 2003

Operator: Penn-1A
 API No. 47- 47-01653 C
 Location: McDowell County

Details of Perforated Intervals, Fracturing or Stimulation, Physical Change, Etc.

N/A

Well Log & Geologic Record - Depths from K.B.

Formation	Top	Bottom
Overburden	0	5
Sandy Shale	5	75
Shale	75	86
Sandy Shale	86	112
Shale	112	120
Sandy Shale	120	163
Shale	163	218
Coal	218	219
Shale	219	280
Sandy Shale	280	318
Shale	318	344
Coal	344	345
Sandy Shale	345	410
Shale	410	415
Coal	415	416
Shale	416	475
Sandy Shale	475	485
Shale	485	492
Sandy Shale	492	542
Shale	542	598
Sandy Shale	598	638
Coal	638	639
Sandy Shale	639	648
Shale	648	680
Sandy Shale	680	697
Shale	697	720
Sandy Shale	720	775
Coal	775	776
Shale	776	805
Coal	805	806
Shale	806	810
Sandy Shale	810	870