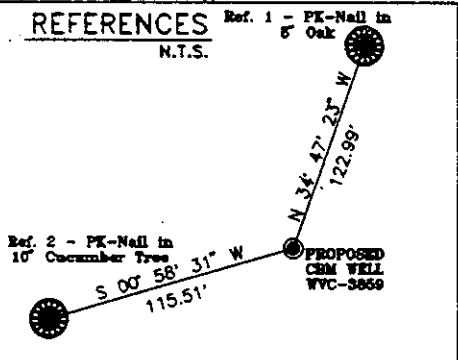
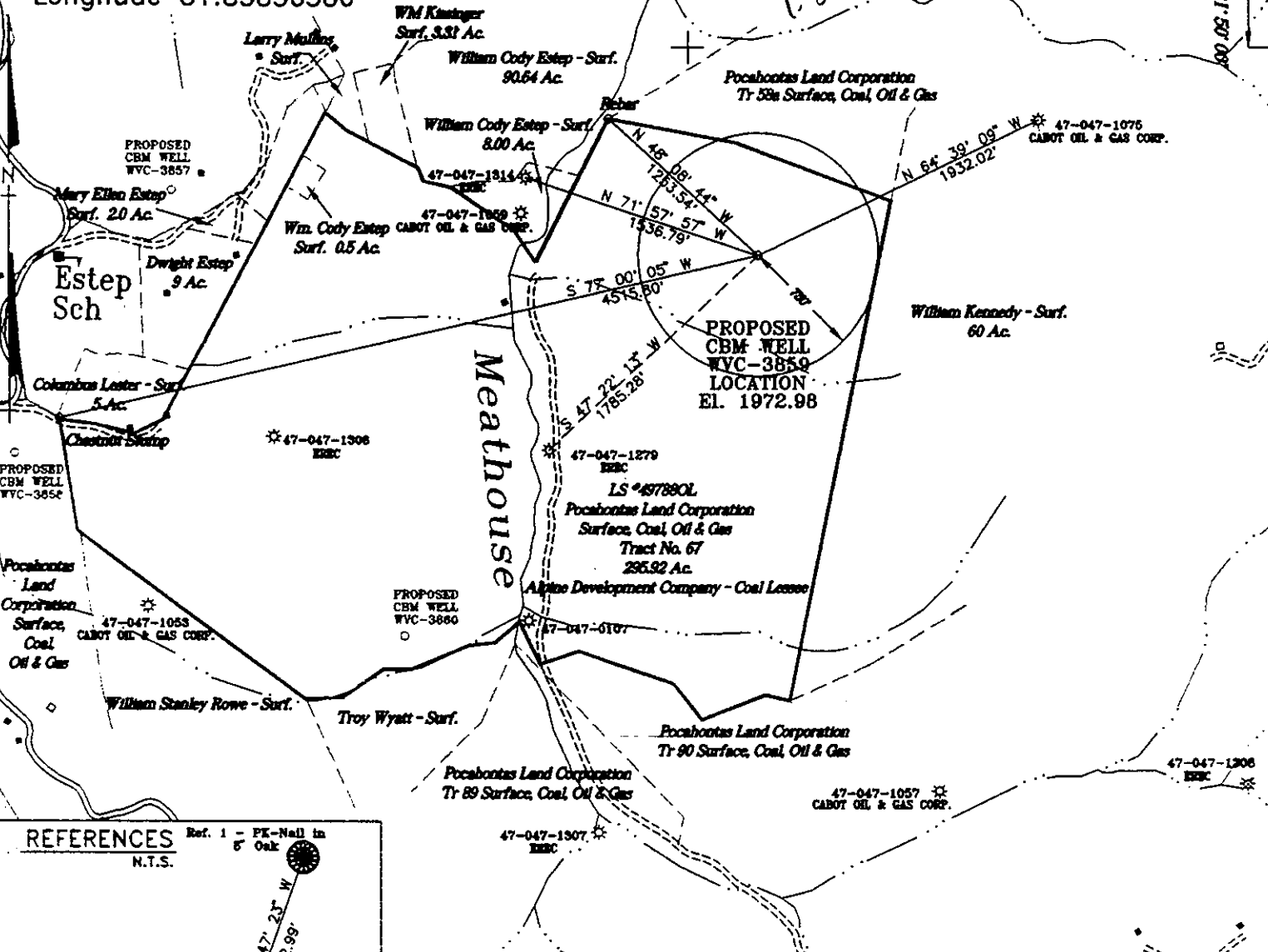


STATE PLANE COORDINATES
(NAD 27 Datum)
N 135043.4156
E 1750532.9253
Latitude 37.36769276
Longitude 81.85836380

7260.6968' LATITUDE 37° 22' 30"
2668.7005' LONGITUDE 81° 50' 00"

0.50
1.38



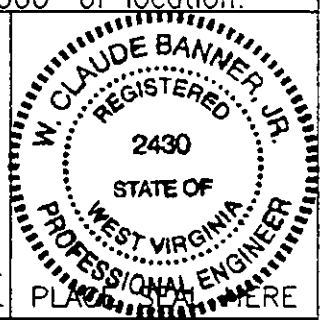
Pocahontas Land Corporation - Surface Tract Lease # 497880L Tract # 67 295.92 Ac.
Pocahontas Land Corporation - Mineral Cabot Oil and Gas Corporation - Oil and Gas Lessee
Alpine Development Company - Coal Lessee

Note: (+) Denotes location of well on USGS map.
No water users are known within 1000' of location.

FILE No. ERE-9803198/SP
DRAWING NAME \WVC-3859\GW-PLAT
SCALE 1" = 1000'
MINIMUM DEGREE OF ACCURACY 1 : 2500
PROVEN SOURCE OF ELEVATION USGS B.M. ESTEP

I THE UNDERSIGNED, HEREBY CERTIFY THAT THIS PLAT IS CORRECT TO THE BEST OF MY KNOWLEDGE AND BELIEF AND SHOWS ALL THE INFORMATION REQUIRED BY LAW AND THE REGULATIONS ISSUED AND PRESCRIBED BY THE DEPARTMENT OF MINES.

(SIGNED) W. Claude Banner, Jr.
R.P.E. _____ R.P.S. _____



STATE OF WEST VIRGINIA
DIVISION OF ENVIRONMENTAL PROTECTION
OFFICE OF OIL AND GAS
NITRO, WV

DATE MARCH 30 19 98
OPERATOR'S WELL No. WVC-3859
API WELL No. 47 - 047 - 01346C

WELL TYPE: OIL GAS CBM LIQUID INJECTION WASTE DISPOSAL
(IF "GAS") PRODUCTION X STORAGE DEEP SHALLOW

LOCATION: ELEVATION 1972.98 WATER SHED ROUGH BRANCH OF MEATHOUSE FORK
DISTRICT SANDY RIVER COUNTY McDOWELL
QUADRANGLE BRADSHAW, WV - VA

SURFACE OWNER POCAHONTAS LAND CORPORATION ACREAGE 295.92
CBM ROYALTY OWNER POCAHONTAS LAND CORPORATION LEASE ACREAGE 15379.43
LEASE No. 497880L

PROPOSED WORK: DRILL X CONVERT DRILL DEEPER REDRILL FRACTURE OR STIMULATE X PLUG OFF OLD FORMATION PERFORATE NEW FORMATION OTHER PHYSICAL CHANGE IN WELL (SPECIFY) 6-6 383

PLUG AND ABANDON CLEAN OUT AND REPLUG

TARGET FORMATION PENNSYLVANIAN COALS ESTIMATED DEPTH _____
WELL OPERATOR EQUITABLE RESOURCES ENERGY COMPANY DESIGNATED AGENT DAVID DEAN
ADDRESS 1989 EAST STONE DRIVE ADDRESS P.O. DRAWER 40
KINGSPORT, TN 37660 BUCKHANNON, WV 26201

McDowell 1346C

WR-35

RECEIVED
Office of Oil & Gas
Permitting

SEP 27 1999

WV Division of
Environmental Protection

04-Jun-98

API # 47- 47-01346 C

State of West Virginia
Division of Environmental Protection
Section of Oil and Gas

Reviewed MB

Well Operator's Report of Well Work

Farm name: POCAHONTAS LAND CORP Operator Well No.: WVC-3859

LOCATION: Elevation: 1,972.98 Quadrangle: BRADSHAW

District: SANDY RIVER County: MCDOWELL
Latitude: 2668 Feet South of 37 Deg. 22Min. 30 Sec.
Longitude 7280 Feet West of 81 Deg. 50 Min. 0 Sec.

Company: EQUITABLE RESOURCES EXP.
1989 E. STONE DR., P.O. BOX 1983
KINGSPORT, TN 37662-1983

Agent: DAVID A. DEAN

Inspector: OFIE HELMICK
Permit Issued: 06/04/98
Well work Commenced: 4/26/99
Well work Completed: 6/30/99
Verbal Plugging
Permission granted on: N/A
Rotary X Cable _____ Rig GASCO #1
Total Depth (feet) LTD=2132 DTD=2127
Fresh water depths (ft) N/A
Salt water depths (ft) 1650'

Casing & Tubing Size	Used in Drilling	Left in Well	Cement Fill Up Cu. Ft.
12 3/4	12	12	GROUTED
8 5/8	308	308	94
7	659	659	43
4 1/2	2019	2019	254
2 3/8	1991	1991	---

Is coal being mined in area (Y/N)? NO
Coal Depths (ft): 40/124/177/430/540/630
745/948/1045/1110/1295/1360/1420/1475/1640
1685/1717/1730/1920
OPEN FLOW DATA

Producing formation POCO 7,6,5,4,3,1 Pay zone depth (ft) 1653-1930
Gas: Initial open flow N/A MCF/d Oil: Initial open flow N/A Bbl/d
Final open flow 34 MCF/d Final open flow N/A Bbl/d
Time of open flow between initial and final tests 6 Hours
Static rock Pressure 265 psig (surface pressure) after 48 Hours
BECKLEY

Second producing formation POCO 9, FIRECREEK, Pay zone depth (ft) 1296-1487.
Gas: Initial open flow _____ MCF/d Oil: Initial open flow _____ Bbl/d
Final open flow _____ MCF/d Final open flow _____ Bbl/d
Time of open flow between initial and final tests _____ Hours
Static rock Pressure _____ psig (surface pressure) after _____ Hours

NOTE: ON BACK OF THIS FORM PUT THE FOLLOWING: 1). DETAILS OF PERFORATED INTERVALS, FRACTURING OR STIMULATING, PHYSICAL CHANGE, ETC. 2). THE WELL LOG WHICH IS A SYSTEMATIC DETAILED GEOLOGICAL RECORD OF ALL FORMATIONS, INCLUDING COAL ENCOUNTERED BY THE WELLBORE.

Michael P Jaskoski
For: EQUITABLE RESOURCES EXP. INC.

By: MICHAEL P JASKOSKI, MANAGER DRILLING/WORKOVER
Date: SEPTEMBER 22, 1999

OCT 04 1999

McDow 1346C

API #: 47-047-01346 C
 OPERATOR WELL #: WVC3859
 FARM NAME: POCAHONTAS LAND CORP

RECEIVED
 Office of Oil & Gas
 Permitting
 SEP 27 1999
 WV Division of
 Environmental Protection

1) DETAILS OF PERFORATED INTERVALS, FRACTURING OR STIMULATING, PHYSICAL CHANGE, ETC.

1ST STAGE - PERFORATED POCO SEAMS # 7,6,5,4,3 & 1 FROM 1653 - 1930 WITH 14 PERFORATIONS. FRACTURED ON 5/7/99 BY HALLIBURTON WITH 70Q LE FOAM; 16400# 10/20 SAND, 566000 SCF N2, 455 TOTAL BBLs FLUID. BREAKDOWN PRESSURE 1436 PSI, MAX PRESSURE 3830 PSI, AVERAGE PRESSURE 3250 PSI, ISIP 1463 PSI, 1 MIN SIP 1346 PSI, 5 MIN SIP 1364 PSI. AVERAGE INJECTION RATE 27 BPM..

2ND STAGE - PERFORATED BECKLEY, FIRECREEK & POCO 9 FROM 1296 - 1487.5 WITH 13 PERFORATIONS. FRACTURED ON 5/7/98 BY HALLIBURTON WITH 70Q LE FOAM; 16250# 10/20 SAND, 495000 SCF N2. BREAKDOWN PRESSURE 2149, MAX PRESSURE 4033 PSI, AVERAGE PRESSURE 3545 PSI, ISIP 2400 PSI, 1-MIN SIP 2298 PSI, 5-MIN SIP 2082 PSI. AVERAGE INJECTION RATE 23 BPM

2) THE WELL LOG, WHICH IS A SYSTEMATIC DETAILED GEOLOGICAL RECORD OF ALL FORMATIONS, INCLUDING COAL ENCOUNTERED BY THE WELLBORE.

SAND, SHALE & THIN COALS	0	1294
BECKLEY	1294	1297
SAND, SHALE & THIN COALS	1297	1430
FIRECREEK	1430	1434
SAND, SHALE & THIN COALS	1434	1487
POCO #9	1487	1488
SAND, SHALE & THIN COALS	1488	1653
POCO #7	1653	1655
SAND, SHALE & THIN COALS	1655	1694
POCO #6	1694	1696
SAND, SHALE & THIN COALS	1696	1722
POCO #5	1722	1724
SAND, SHALE & THIN COALS	1724	1803
POCO #4	1803	1804
SAND, SHALE & THIN COALS	1804	1840
POCO #3	1840	1842
SAND, SHALE & THIN COALS	1842	1929
POCO #1	1929	1931
SAND, SHALE & THIN COALS	1931	2132
LOGGER'S TOTAL DEPTH		2132
DRILLER'S TOTAL DEPTH		2127