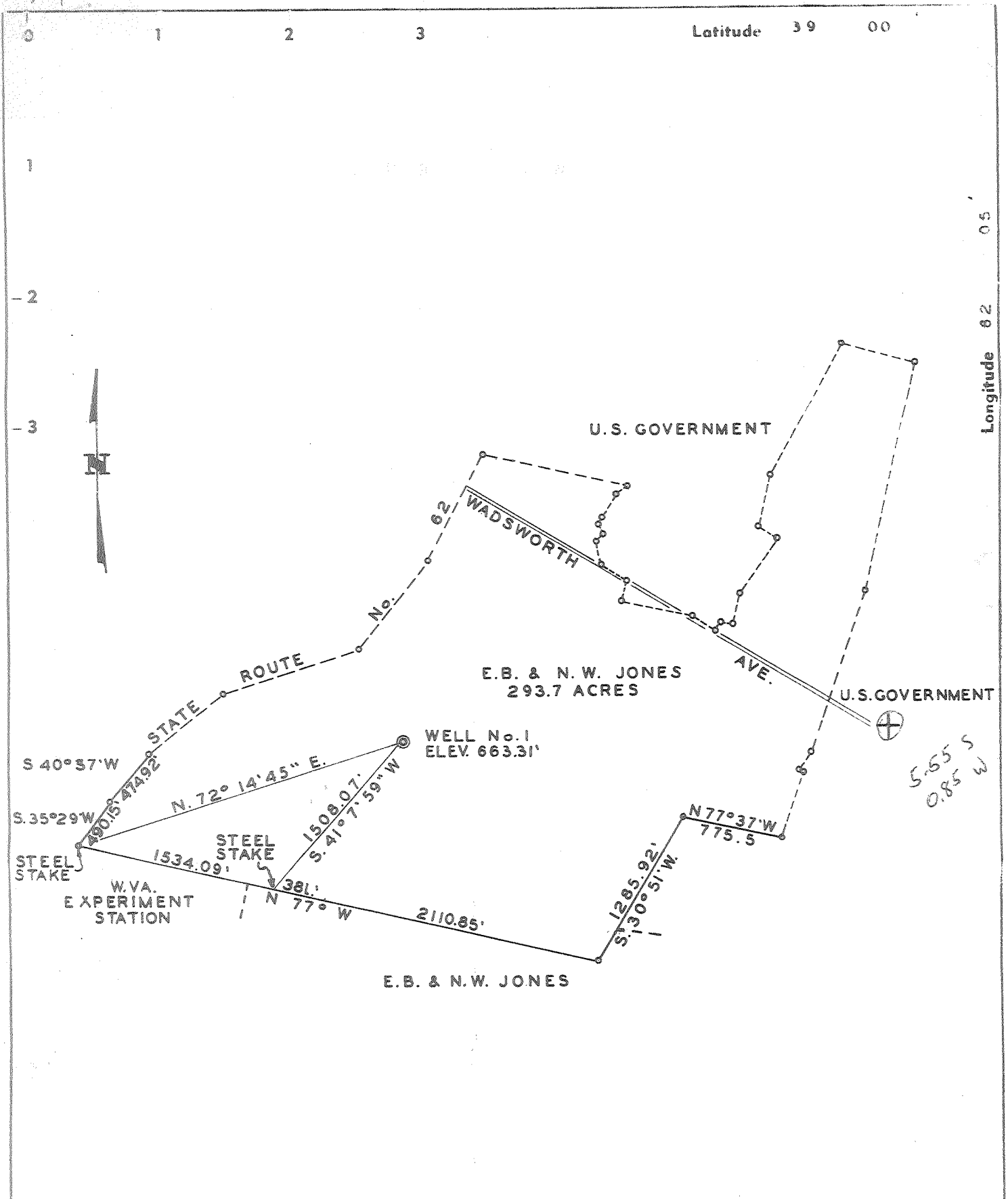


71



New Location .  DEGREE OF ACCURACY ONE IN 200  
 Drill Deeper . . . . .  PROVEN ELEV. 663.31' U. S. G. S. BENCH MARK  
 Redrill . . . . .   
 Abandonment . . . . .  "I, the undersigned, hereby certify that this map is correct to the best of my knowledge and belief and shows all the information required by paragraph 6 of the rules and regulations of the oil and gas section of the mining laws of West Virginia."

Company SHAWNEE OIL & GAS COMPANY  
 Address 215 SIXTH ST.; POINT PLEASANT, W.V.A.  
 Farm E.B. & N.W. JONES  
 Tract \_\_\_\_\_ Acres 293.7 Lease No. \_\_\_\_\_  
 Well (Farm) No. ONE Serial No. \_\_\_\_\_  
 Elevation (Spirit Level) 663.31'  
 Quadrangle POINT PLEASANT - NC  
 County MASON District ROBINSON  
 Engineer \_\_\_\_\_  
 Engineer's Registration No. 3755  
 File No. \_\_\_\_\_ Drawing No. \_\_\_\_\_  
 Date 3-3-66 Scale 1" = 1000'

STATE OF WEST VIRGINIA  
 DEPARTMENT OF MINES  
 OIL AND GAS DIVISION  
 CHARLESTON

**WELL LOCATION MAP**  
 FILE NO. MAS-107  
 Chart: 3/

+ Denotes location of well on United States Topographic Maps, scale 1 to 62,500, latitude and longitude lines being represented by border lines as shown.

— Denotes one inch spaces on border line of original tracing.

2-0 (310)

Deep Well (Onondaga) ~~Deep Well (Onondaga)~~



STATE OF WEST VIRGINIA  
DEPARTMENT OF MINES  
OIL AND GAS DIVISION

Rotary   
Spudder   
Cable Tools   
Storage

oil & gas show

Quadrangle \_\_\_\_\_  
Permit No. MAS-107

WELL RECORD

Oil or Gas Well  Dry  
(KIND)

Company	Address	Farm	Location (waters)	Well No.	District	The surface of tract is owned in fee by	Mineral rights are owned by	Drilling commenced	Drilling completed	Date	With	Open Flow	Volume	Rock Pressure	Oil	WELL ACIDIZED (DETAILS)	WELL FRACTURED (DETAILS)
Shawnee Gas and Oil	200 Park Avenue N. Y., N. Y.	Robinson Land Company		1	Robinson	E. B. and N. W. Jones	E. B. Jones	March 22, 1966	April 29, 1966	6-9-66	1100 bbl. water, 45,000 lb. sand	10ths Water in	10-McKays	none	none		

Casing and Tubing	Used in Drilling	Left in Well	Packers
Size			Kind of Packer
16	147'	147'	
10	158'	158'	Size of
8 3/4	634'	none	Depth set
6 3/4	1736'	none	
5 3/16	-----	----	
4 1/2	2983'	2983'	Perf. top
3			Perf. bottom
2	1708	1708	Perf. top
			Perf. bottom

Attach copy of cementing record.  
CASING CEMENTED  $4\frac{1}{2}$  SIZE 2983 No. Ft. 5-17-66 Date  
Amount of cement used (bags) 100 sks.  
Name of Service Co. Halliburton  
COAL WAS ENCOUNTERED AT --- FEET --- INCHES  
--- FEET --- INCHES --- FEET --- INCHES  
--- FEET --- INCHES --- FEET --- INCHES

RESULT AFTER TREATMENT (Initial open Flow or bbls.)   
ROCK PRESSURE AFTER TREATMENT \_\_\_\_\_ HOURS  
Fresh Water 150' Feet Salt Water 815 Feet  
Producing Sand Devonian Shale and Second Berea Depth 2846 and 1709

Formation	Color	Hard or Soft	Top	Bottom	Oil, Gas or Water	Depth	Remarks
Sand		soft	0	158'			
Shale			158'	395'			
Sand			395'	415'	7 bwph		
Shale			415'	537'			
Sand			537'	623'			
Shale			623'	815'			
Sand			815'	834'	12 bwph		
Shale			834'	944'			
Limestone			944'	953'			
Shale			953'	1002'			
Limestone			1002'	1109'			
Sand			1109'	1225'	water hf	1208'	
Shale			1225'	1380'			
Sand			1380'	1390'			
Shale			1390'	1653'			
Sand			1653'	1680'	show gas		1st Berea
Shale			1680'	1704'	and water.		
Sand			1704'	1726'	sho. gas, oil		2nd Berea
Shale	gray		1726'	2165'			
Shale	brown		2165'	2175'			
Shale	gray		2175'	2597'			
Shale	brown	brittle	2597'	2942'	sho. gas	2857'	
Shale	gray		2942'	3156'			
Shale	brown		3156'	3259'			
Limestone	white, brn. hard		3259'	3273'	(Corniferous)	Onondaga	3273' Total Depth



663  
2596