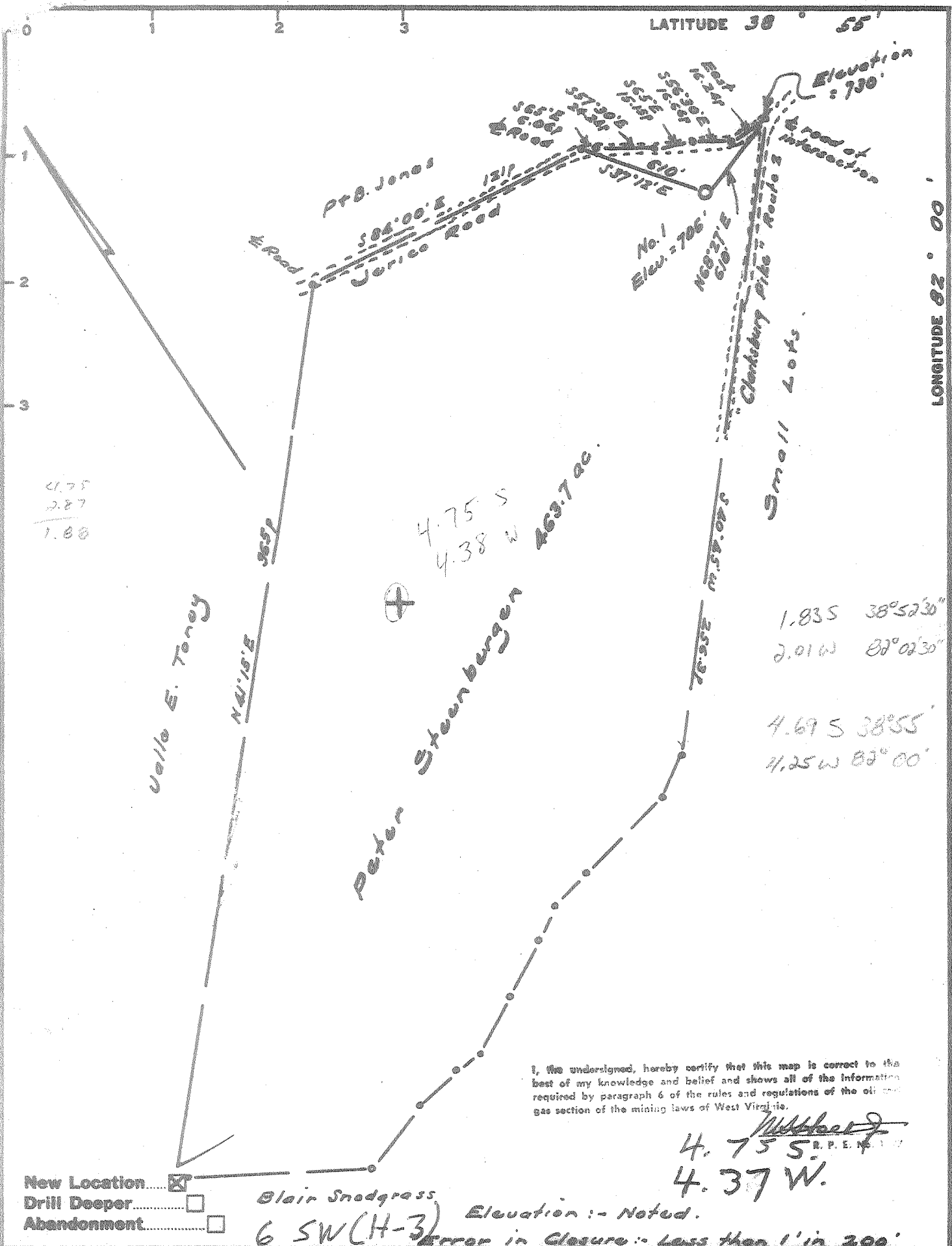


LATITUDE 38° 55'

LONGITUDE 82° 00'



I, the undersigned, hereby certify that this map is correct to the best of my knowledge and belief and shows all of the information required by paragraph 6 of the rules and regulations of the oil and gas section of the mining laws of West Virginia.

W. H. Jones
 4.75 S
 4.37 W

New Location
 Drill Deeper
 Abandonment

Blair Snodgrass
 6 SW (H-3) Elevation :- Noted.
 Error in Closure :- Less than 1' in 200'

Company Prior Oil Co.
 Address 224 Washington Bud. Parma Ohio
 Farm Peter Steunbergen
 Tract _____ Acres 462.7 Lease No. _____
 Well (Farm) No. One Serial No. _____
 Elevation (Spirit Level) 706
 Quadrangle Pt Pleasant - EC
 County Mason District Lewis
 Engineer W. H. Jones
 Engineer's Registration No. 1237
 File No. _____ Drawing No. _____
 Date Oct. 1, 1965 Scale 1" = 500' = 825'

STATE OF WEST VIRGINIA
 DEPARTMENT OF MINES
 OIL AND GAS DIVISION
 CHARLESTON

WELL LOCATION MAP
 FILE NO. MAS-105

+ Denotes location of well on United States Topographic Maps, scale 1 to 62,500, latitude and longitude lines being represented by border lines as shown.

- Denotes one inch spaces on border line of original tracing.

No Samples

Deep Well



STATE OF WEST VIRGINIA
DEPARTMENT OF MINES
OIL AND GAS DIVISION 15

Rotary
Spudder
Cable Tools
Storage

*Min. of Hill
101 Post
3-17-66*

Quadrangle PT. PLEASANT

Permit No. MAS-105

WELL RECORD

Oil or Gas Well GAS Show
(KIND)

Company PRIOR OIL COMPANY
Address 224 WASHINGTON BLVD., BELPRE, OHIO
Farm PETER STEENBERGER Acres 463.7
Location (waters) _____
Well No. ONE Elev. 706
District LEWIS County MASON
The surface of tract is owned in fee by P. STEENBERGER
Address PT. PLEASANT, W. VA.
Mineral rights are owned by P. STEENBERGER, ET AL
Address PT. PLEASANT, W. VA.
Drilling commenced 11/30/65
Drilling completed 2/18/66
Date Shot _____ From _____ To _____
With _____
Open Flow _____ /10ths Water in _____ Inch
_____ /10ths Merc. in _____ Inch
Volume _____ Cu. Ft.
Rock Pressure _____ lbs. _____ hrs.
Oil _____ bbls., 1st 24 hrs.
WELL ACIDIZED 500 GAL. ACID
WELL FRACTURED 30,000#20/40 SAND

| Casing and Tubing | Used in Drilling | Left in Well | Packers |
|-------------------|------------------|--------------|----------------|
| Size | | | Kind of Packer |
| 16 | | | |
| 13 | | | |
| 10 | 604 | | Size of |
| 8 1/2 | 959 | | |
| 6 5/8 | 1987 | | Depth set |
| 5 3/16 | | | |
| 4 1/2 | 3702 | 3702 | Perf. top 3575 |
| 2 | | | Perf. bottom |
| Liners Used | | | Perf. top |
| | | | Perf. bottom |

CASING CEMENTED 4 1/2 SIZE 3702 No. Ft. 2/15/66 Date

NO COAL
COAL WAS ENCOUNTERED AT _____ FEET _____ INCHES
_____ FEET _____ INCHES
_____ FEET _____ INCHES

RESULT AFTER TREATMENT NO GUAGE ON OPEN FLOW

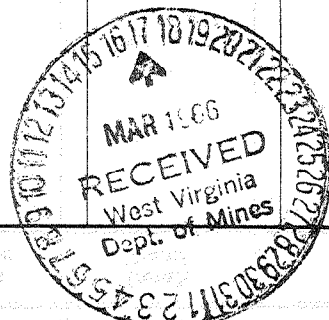
ROCK PRESSURE AFTER TREATMENT 485#

Fresh Water _____ Feet Salt Water _____ Feet

*100 MCF Gas
volume
flow
down to
the new
well*

| Formation | Color | Hard or Soft | Top | Bottom | Oil, Gas or Water | Depth | Remarks |
|----------------|-------|--------------|------|--------|-------------------|-------|---------|
| Surface | | | 0 | 5 | | | |
| Clay | | | 5 | 10 | | | |
| Sand | | | 10 | 60 | | | |
| Red rock | | | 60 | 85 | | | |
| Slate | | | 85 | 140 | | | |
| Red rock | | | 140 | 155 | | | |
| Slate | | | 155 | 210 | | | |
| Red rock | | | 210 | 220 | | | |
| Sand q | | | 220 | 245 | | | |
| Red rock | | | 245 | 333 | | | |
| Slate | | | 333 | 340 | | | |
| Red rock | | | 340 | 400 | | | |
| Slate | | | 400 | 420 | | | |
| Red rock | | | 420 | 480 | | | |
| Sand | | | 480 | 525 | | | |
| Red rock | | | 525 | 545 | | | |
| Slate | | | 545 | 580 | | | |
| Sand | | | 580 | 624 | | | |
| Slate & shells | | | 624 | 670 | | | |
| Sand | | | 670 | 740 | | | |
| Slate & shells | | | 740 | 976 | | | |
| Sand & slate | | | 976 | 1085 | | | |
| Sand | | | 1085 | 1120 | | | |
| Slate & shells | | | 1120 | 1195 | | | |
| Sand | | | 1195 | 1260 | | | |
| Big Lime | | | 1260 | 1370 | | | |
| Slate & shells | | | 1370 | 1580 | | | |
| Sand | | | 1580 | 1615 | | | |
| Slate & shells | | | 1615 | 1840 | | | |
| Brown shale | | | 1840 | 1847 | | | |

Abundant salt water



| Formation | Color | Hard or Soft | Top 15' | Bottom | Oil, Gas or Water | Depth Found | Remarks |
|--|-------|--------------|---------|--------|-------------------|-------------|--|
| Berea Sand | | | 1847 | 1879 | | | |
| Slate & shells | | | 1879 | 2840 | | | |
| Brown shale | | | 2840 | 2870 | | | |
| Lime | | | 2870 | 3540 | | | |
| Sand | | | 3540 | 3552 | | 706 | |
| Lime | | | 3552 | 3570 | | | |
| Sand | | | 3570 | 3578 | | | |
| Lime | | | 3578 | 3722 | | | |
| <p>Scouting reports list top of Onondaga at 3515', Oriskany at 3585', tested 100 MCF gas. Well shut down (3/15/66).</p> | | | | | | | <p>3515 3585 706 706 ----- 2809 2879</p> |
| <p>Well is located west of ORSK pinchout of continuous ORSK</p> <ul style="list-style-type: none"> - prodn may be from ONDG/ARUL? - or, may be a small pad of ORSK west of the pinchout <u>UCB</u> | | | | | | | |

Date March 16, 1966

APPROVED PRIOR OIL COMPANY, Owner

By Gene Cottle
(Title)

WELL TELEGRAM

DATE February 1, 1966

Prior Oil Company COMPANY WELL NO. F-36859 MAP SQ. 36-93 ELEV. 704'

Yallie E. Toney #1 FARM Lewis DISTRICT Mason 97 COUNTY W. Va. STATE

GAS PURCHASE CONTRACT NO. #6649

COMPLETED DRILLING 8-18-65

DATE SHUT IN

| FINAL OPEN FLOW MCF | 84 M | HORIZON | Corniferous | ROCK PRESSURE | 7 days 100# Tub. 800# Csg. |
|---------------------------|------|-------------|---------------------|------------------|----------------------------------|
| 4 1/2" csg. 4156' | | Berea | 1792 - 1824 (-1088) | | |
| | | Corniferous | 3393 - 3499 (-2689) | | |
| | | Oniskany | 3499 - 3502 | | 4007 |
| | | Newburg | 4007 - 4026 | | 3499 |
| | | Total Depth | 4156' | | 508 |

Perf. 4 1/2" csg. @ 4153, 4060, 4012, 3982, 3924 & 3890' with 12 holes.
 Fractured - no results.
 Perf. 4 1/2" csg. @ 3573, 3511, 3478, 3448' with 8 holes.
 Fractured.
 Test 1-18-66 (open 40 Min.) 4/10 W 2" 84 M.

SIGNED Ralph Dye