

I, the undersigned, hereby certify that this map is correct to the best of my knowledge and belief and shows all of the information required by paragraph 4 of the rules and regulations of the oil and gas section of the mining laws of West Virginia.

*W. H. H. [Signature]*  
 W. V. M. 1967

- New Location
- Drill Deeper
- Abandonment

Elev. reference: - Well No. 1 = 707'  
 issued 9-3-70  
 Error in Closure: - Less than 1' in 200'

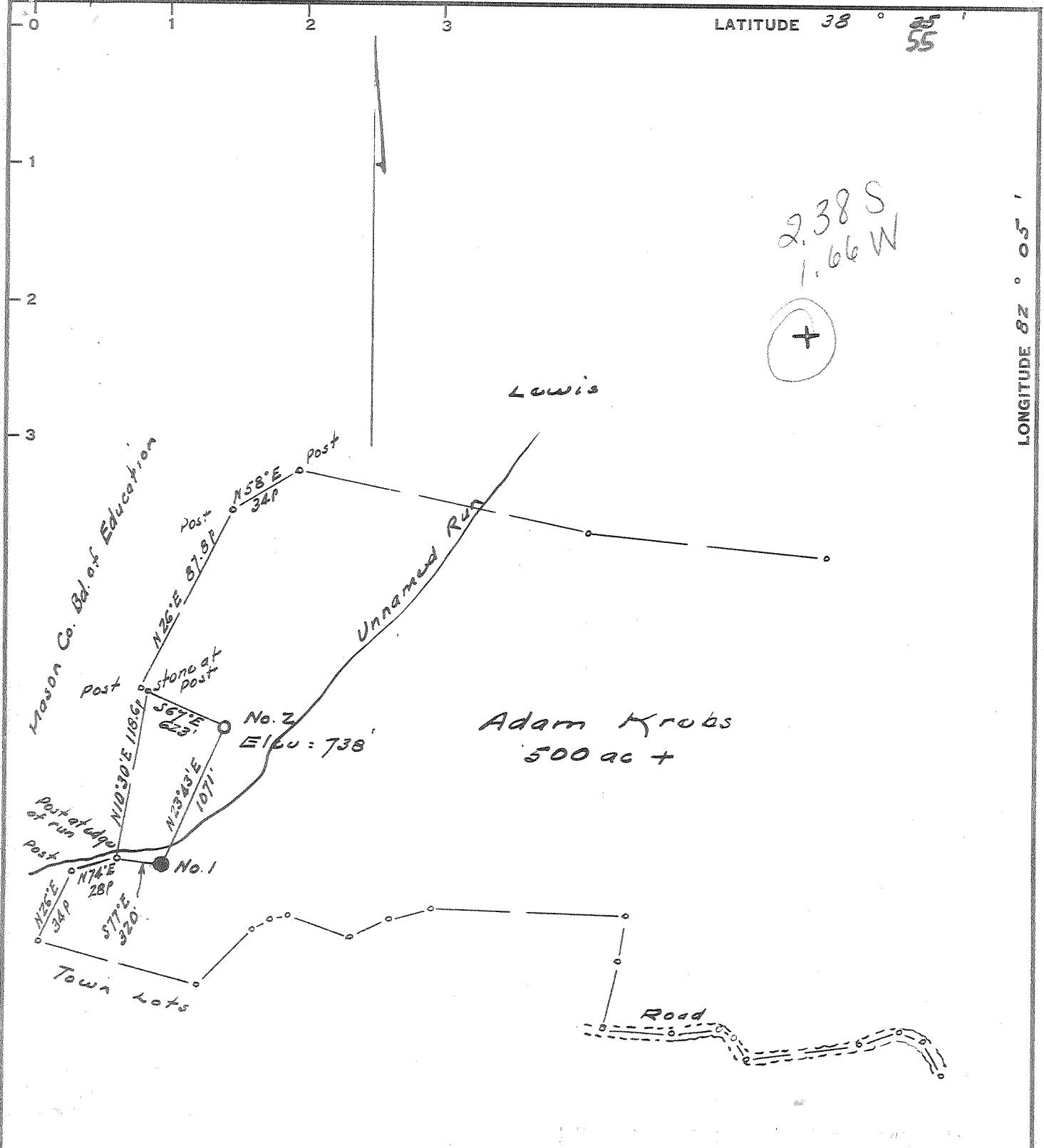
**A.A. Pursley dba: Pursley's Pulling & Well Service**  
 Company Pursley's Pulling & Well Service  
 Address Box 51, Leroy, West Va. 25252  
 Farm Adam Krubs  
 Tract \_\_\_\_\_ Acres 500+ Lease No. \_\_\_\_\_  
 Well (Farm) No. Two Serial No. \_\_\_\_\_  
 Elevation (Spirit Level) 738  
 Quadrangle Pt Pleasant ✓  
 County Mason District Robinson  
 Engineer W. H. H.  
 Engineer's Registration No. 1227  
 File No. \_\_\_\_\_ Drawing No. \_\_\_\_\_  
 Date Jan 23, 1965 Scale 1" = 990'

STATE OF WEST VIRGINIA  
 DEPARTMENT OF MINES  
 OIL AND GAS DIVISION  
 CHARLESTON

**WELL LOCATION MAP**  
 FILE NO. Mas-89-P

+ Denotes location of well on United States Topographic Maps, scale 1 to 62,500, latitude and longitude lines being represented by border lines as shown.  
 - Denotes one inch spaces on border line of original tracing.

M.L.



2.40 S. ~~W. Sheet J.~~  
1.67 W.

New Location   
Drill Deeper   
Abandonment

5-C (H-3)

Elev. reference: - Well No. 1 = 707'

Error in Closure: - Less than 1" in 200'

Company	Prion Oil Company
Address	224 Washington Bud., Belpre, O
Farm	Adam Krebs
Tract	Acres 500+ Lease No.
Well (Farm) No.	Two Serial No.
Elevation (Spirit Level)	738
Quadrangle	Pt. Pleasant-C
County	Mason District Robinson
Engineer	W. Sheet J.
Engineer's Registration No.	1227
File No.	Drawing No.
Date	Jan 23, 1965 Scale 1" = 990'

STATE OF WEST VIRGINIA  
DEPARTMENT OF MINES  
OIL AND GAS DIVISION  
CHARLESTON

WELL LOCATION MAP  
FILE NO. Mas-89

+ Denotes location of well on United States Topographic Maps, scale 1 to 62,500, latitude and longitude lines being represented by border lines as shown.  
- Denotes one inch spaces on border line of original tracing.

P



STATE OF WEST VIRGINIA DEPARTMENT OF MINES OIL AND GAS DIVISION

Rotary [X] Spudder [ ] Cable Tools [ ] Storage [ ]

Miss Phillips for [unclear] 2-17-66

OIL & GAS

Oil or Gas Well BOTH (KIND)

Quadrangle PT. PLEASANT Permit No. MAS-89

WELL RECORD

Company PRIOR OIL COMPANY Address 224 WASHINGTON B LVD., BELPRE, OHIO Farm ADAM KREBS Acres 500 Location (waters) Well No. TWO Elev. 738 District ROBINSON County MASON The surface of tract is owned in fee by A. KREBS Address PT. PLEASANT, W.VA. Mineral rights are owned by A. KREBS Address PT. PLEASANT, W.VA. Drilling commenced 2/6/65 Drilling completed 3/23/65 Date Shot From To With Open Flow /10ths Water in Inch /10ths Merc. in Inch Volume Cu. Ft. Rock Pressure lbs. hrs. Oil bbls., 1st 24 hrs. WELL ACIDIZED 1,000 GAL.

Table with columns: Casing and Tubing, Used in Drilling, Left in Well, Packers. Rows include tubing sizes (16, 18, 10, 8 5/8, 6, 5 3/16, 4 1/2) and packer details (Kind of Packer, Size of, Depth set, Perf. top/bottom).

CASING CEMENTED 4 1/2 SIZE 3395 No. Ft. 3123/65 Date

NO COAL COAL WAS ENCOUNTERED AT FEET INCHES FEET INCHES FEET INCHES

WELL FRACTURED 45,000# 20/40 SAND RESULT AFTER TREATMENT 1,250 MCF 15 BOPD in 2nd Beren ROCK PRESSURE AFTER TREATMENT 995# Fresh Water NONE RECORDED Feet Salt Water NONE RECORDED Feet

in Lower Devonians = Oriskany?? Gas blowy down to very small volume

Geological log table with columns: Formation, Color, Hard or Soft, Top, Bottom, Oil, Gas or Water, Depth, Remarks. Includes handwritten notes like '1st Beren', '2nd Beren', 'Top of Onondaga', 'Oriskany(?) as reported by PI'.

well is located west of pinchout of continuous ORSK - prodn from ONDG/HRVL/OR HDBG?? -OR, may possibly be a small pod of ORSK west of pinchout (MCB)

