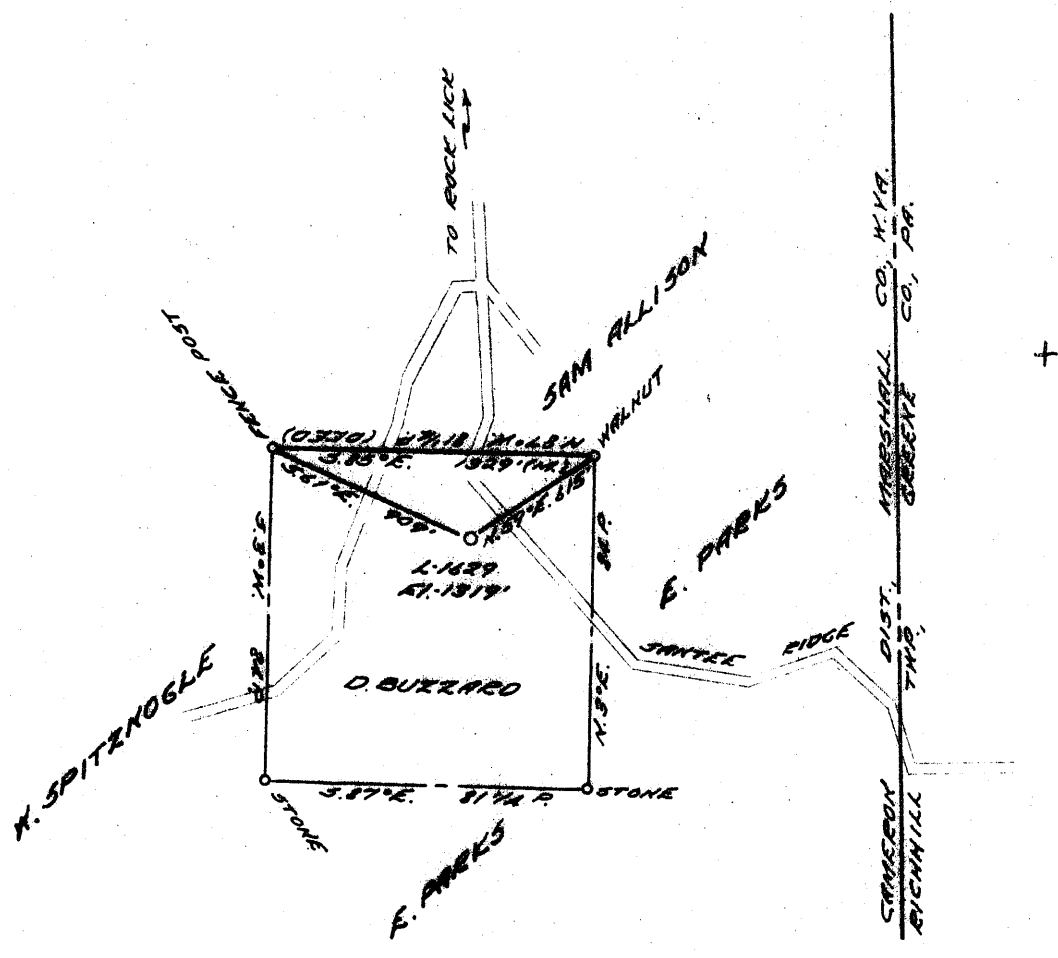


6-2-66-103

LATITUDE 39 ° 55 '

LONGITUDE 80 ° 30 '



3.76 S
1.34 W

COAL OWNED BY The M & A. Hanna Company

- NEW LOCATION
- RECONDITION
- DRILL DEEPER
- ABANDONMENT

"I, the undersigned, hereby certify that this map is correct to the best of my knowledge and belief and shows all the information required by paragraph 6 of the rules and regulations of the oil and gas section of the mining laws of West Virginia."
 Minimum degree of accuracy is one part in 200'

Signed Robert M. Acill 361-E DC

COMPANY	THE MANUFACTURERS LIGHT & HEAT		
ADDRESS	800 UNION TRUST BLDG., PGH., PA.		
FARM	DANIEL BUZZARD		
MAP	0-25-20	ACRES	46
LEASE NO.	210		
WELL (FARM) NO.	1	SERIAL NO.	1629
ELEVATION (SPIRIT LEVEL)	1319'		
QUADRANGLE	CAMERON-EC		
COUNTY	MARSHALL	DISTRICT	CAMERON
POINT OF PROVEN ELEVATION	U.S.G.S. ROCK LICK		
TRIANGULATION	STA. DISK EL-1583		
FILE NO.	DRAWING NO. Y-28-146		
DATE	31 MAY 1966	SCALE	1" = 800'

STATE OF WEST VIRGINIA
 DEPARTMENT OF MINES
 OIL AND GAS DIVISION
 CHARLESTON
 WELL LOCATION MAP

FILE NO. Mars-488-A

+ DENOTES LOCATION OF WELL ON UNITED STATES TOPOGRAPHIC MAPS, SCALE 1 TO 62,500, LATITUDE AND LONGITUDE LINES BEING REPRESENTED BY BORDER LINES AS SHOWN.
 -- DENOTES ONE INCH SPACES ON BORDER LINE OF ORIGINAL TRACING.

IDA BUZZARD NO. 1629 WELL.

Cameron District, Marshall County, W. Va.
By Manufacturers Light & Heat Co.
Completed Aug. 26, 1913.
Record from Mr. Schillham Sept. 30, 1939.

	Top.	Bottom.
Pittsburgh Coal	816	- 824
Murphy Sand	914	- 934
Little Dunkard Sand	1217	- 1267
Big Dunkard Sand	1320	- 1365
Little Line	1893	- 1903
Big Line	1903	- 1960
Big Injun Sand	1960	- 2177
30-Foot Sand	2551	- 2570
50-Foot Sand	2704	- 2774
Gordon Stray Sand	2804	- 2833
Total depth		2840