

Partially Plugged

1.80S  
4.04W

COAL OWNED BY M. A. Hanna Coal Company

- NEW LOCATION
- RECONDITION
- DRILL DEEPER
- ABANDONMENT

"I, the undersigned, hereby certify that this map is correct to the best of my knowledge and belief and shows all the information required by paragraph 6 of the rules and regulations of the oil and gas section of the mining laws of West Virginia."  
 Minimum degree of accuracy is one part in 200

Signed John A. London

(J.F.)

COMPANY The Manufacturers Light And Heat Company  
 ADDRESS 800 Union Trust Bldg. Pittsburgh, Pa.  
 FARM Lindsay Stricklin Lease 31096  
 MAP 0-25/24 ACRES 56 LEASE NO. 31096  
 WELL (FARM) NO. 2 SERIAL NO. 4635  
 ELEVATION (SPIRIT LEVEL) 1218'  
 QUADRANGLE Cameron 15'  
 COUNTY Marshall DISTRICT Liberty  
 POINT OF PROVEN ELEVATION U.S.G.S. B.M. D-127

STATE OF WEST VIRGINIA  
 DEPARTMENT OF MINES  
 OIL AND GAS DIVISION  
 CHARLESTON  
 WELL LOCATION MAP

FILE NO. MARS-468-A

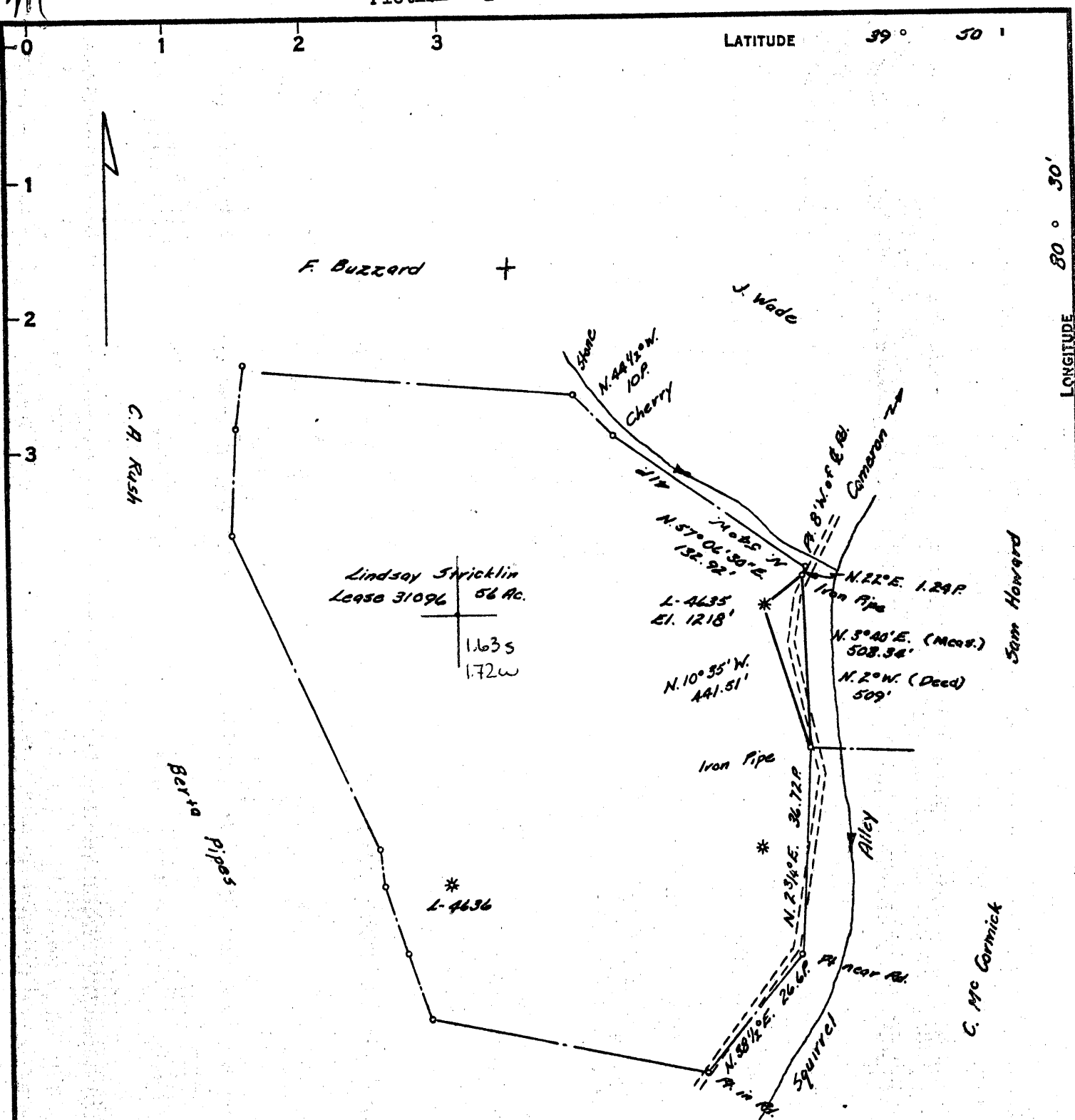
+ DENOTES LOCATION OF WELL ON UNITED STATES TOPOGRAPHIC MAPS, SCALE 1 TO 62,500. LATITUDE AND LONGITUDE LINES BEING REPRESENTED BY BORDER LINES AS SHOWN.

- DENOTES ONE INCH SPACES ON BORDER LINE OF ORIGINAL TRACING.

FILE NO. \_\_\_\_\_ DRAWING NO. Y-25-870  
 DATE March 4, 1964 SCALE 1"=400'

LATITUDE 39° 50'

LONGITUDE 80° 30' 30"



Lindsay Stricklin  
Lease 31096 56 Ac.  
1.635  
1.72w

1.78S  
4.08W

Partially Plugged

COAL OWNED BY M. A. Hanna Coal Company

- NEW LOCATION
- RECONDITION
- DRILL DEEPER
- ABANDONMENT

"I, the undersigned, hereby certify that this map is correct to the best of my knowledge and belief and shows all the information required by paragraph 6 of the rules and regulations of the oil and gas section of the mining laws of West Virginia."

Minimum degree of accuracy is one part in 200

Signed John A. London (J.F.)

COMPANY The Manufacturers Light And Heat Company  
 ADDRESS 800 Union Trust Bldg. Pittsburgh, Pa.  
 FARM Lindsay Stricklin Stricklin  
 MAP 0-25/24 ACRES 56 LEASE NO. 31096  
 WELL (FARM) NO. 7 SERIAL NO. 4635  
 ELEVATION (SPIRIT LEVEL) 1218'  
 QUADRANGLE Cameron 15' SE  
 COUNTY Marshall DISTRICT Liberty  
 POINT OF PROVEN ELEVATION U.S.G.S. B.M. D-127

STATE OF WEST VIRGINIA  
 DEPARTMENT OF MINES  
 OIL AND GAS DIVISION  
 CHARLESTON  
 WELL LOCATION MAP  
 FILE NO. MARS-468-A-P

+ DENOTES LOCATION OF WELL ON UNITED STATES TOPOGRAPHIC MAPS, SCALE 1 TO 62,500. LATITUDE AND LONGITUDE LINES BEING REPRESENTED BY BORDER LINES AS SHOWN.

- DENOTES ONE INCH SPACES ON BORDER LINE OF ORIGINAL TRACING.

FILE NO. \_\_\_\_\_ DRAWING NO. Y-25-870  
 DATE March 4, 1964 SCALE 1"=400'