

0 1 2 3 LATITUDE 39° 50' 39 47 30

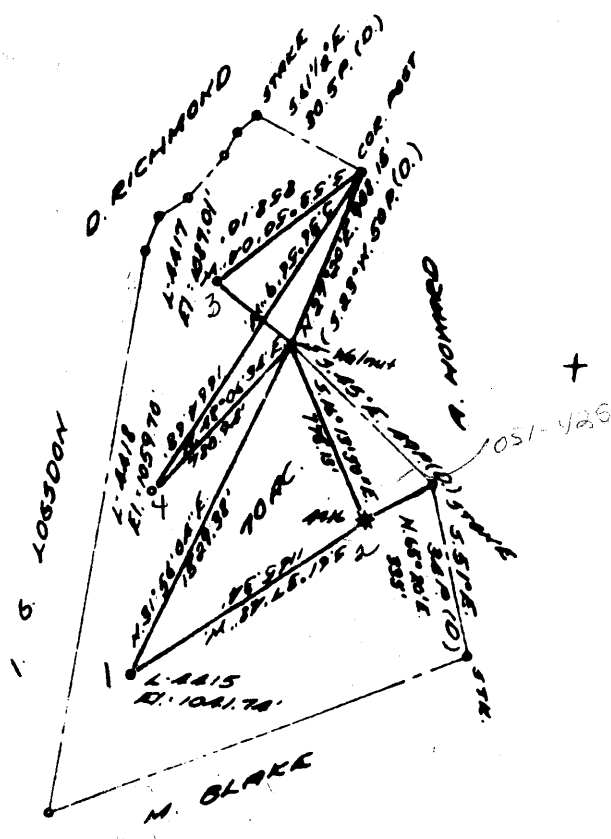
1

2

3

80° 37' 30" 80° 35'

LONGITUDE



Check  
4447  
4416

4.58S  
2.60W  
7 1/2  
1.65S  
0.38W

COAL OWNED BY M. A. Hanna Coal Company

- NEW LOCATION
- RECONDITION
- DRILL DEEPER
- ABANDONMENT

"I, the undersigned, hereby certify that this map is correct to the best of my knowledge and belief and shows all the information required by paragraph 6 of the rules and regulations of the oil and gas section of the mining laws of West Virginia."  
Minimum degree of accuracy is one part in 2500

Signed Robert M. Heil (J.V.)

COMPANY The Manufacturers Light And Heat Company  
 ADDRESS 800 Union Trust Bldg. Pittsburgh, Penna.  
 FARM C. E. Yeater  
 MAP 0-25/28 ACRES 70 LEASE NO. 28912  
 WELL (FARM) NO. 1 SERIAL NO. L-4415  
 ELEVATION (SPIRIT LEVEL) 1041.74'  
 QUADRANGLE Cameron 15'  
 COUNTY Marshall DISTRICT Liberty  
 POINT OF PROVEN ELEVATION U.S.G.S. B.M. H-127

STATE OF WEST VIRGINIA  
 DEPARTMENT OF MINES  
 OIL AND GAS DIVISION  
 CHARLESTON  
 WELL LOCATION MAP  
 FILE NO. MARS-454-A

+ DENOTES LOCATION OF WELL ON UNITED STATES TOPOGRAPHIC MAPS. SCALE 1 TO 62,500. LATITUDE AND LONGITUDE LINES BEING REPRESENTED BY BORDER LINES AS SHOWN.  
 - DENOTES ONE INCH SPACES ON BORDER LINE OF ORIGINAL TRACING.

FILE NO. \_\_\_\_\_ DRAWING NO. Y-25-779  
 DATE June 20, 1963 SCALE 1" = 800'

C. E. YEATER NO. 1 (1001) WELL.

W 662  
70571

Liberty District, Marshall County, W. Va.  
By Carnegie Natural Gas Co.  
Map, Cameron SW.  
On 70 acres.

Drilling commenced Sept. 10, 1920; completed, Oct. 12, 1920.  
Open flow, 681,000 cu. ft.; 350# R. P. (Marion Sand).  
5-bbl. oil well on deepening (Gordon Sand).  
Deepened Aug. 8, 1934, from 1824'.  
Record from Wilcox Sept. 27, 1939.

	Top.	Bottom.
Mapletown (Sawickley) Coal	700	705
Pittsburgh Coal (2 bailers water per hour)	805	812
Little Dunkard Sand	1165	1173
Big Dunkard Sand	1303	1370
1st Gas Sand	1420	1440
1st Salt Sand	1600	1640
2nd Salt Sand (hole full water, 1695')	1680	1730
Marion Sand (gas, 1814-23'; 681,000 cu. ft.; 550# R. P.)	1784	1846
DRILLED DEEPER Aug. 8, 1934, from 1824':		
Little Lime	1864	1883
Pencil Cave	1883	1885
Big Lime	1885	1940
Big Injun Sand (show gas, 1946-48'; water, 2030', 2½ bailers per hour)	1940	2195
Gantz Sand		Shells
50-Ft. Sand	2545	2554
Red rock	2635	2682
Gordon Stray Sand (show gas, 2748-49')	2746	2765
Gordon Sand (oil, 2800-03'; 5 bbls.)	2798	....
Total depth		2818