

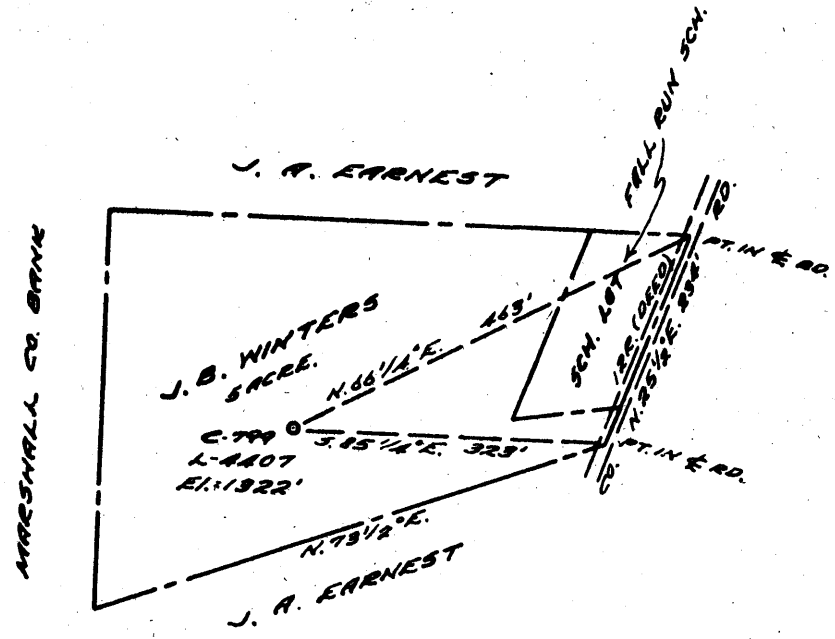
0 1 2 3

LATITUDE 39 45

NOTE

1 2 3

LONGITUDE 80 30



0.045  
1.37W

1.38W  
0.07

COAL OWNED BY \_\_\_\_\_

NEW LOCATION   
 DRILL DEEPER   
 ABANDONMENT

MAY 1 1961

0-25-30

COMPANY THE MANUFACTURERS LIGHT & HEAT  
 ADDRESS 800 UNION TRUST BLDG., PGM., PG.  
 FARM J. B. WINTERS  
 TRACT \_\_\_\_\_ ACRES 5 LEASE NO. 28906  
 WELL (FARM) NO. 1 SERIAL NO. 4407  
 ELEVATION (SPIRIT LEVEL) 1922'  
 QUADRANGLE LITTLETON  
 COUNTY MARSHALL DISTRICT LIBERTY  
 ENGINEER Thomas E. Virgin  
 ENGINEER'S REGISTRATION NO. 1503  
 FILE NO. \_\_\_\_\_ DRAWING NO. Y-25-315  
 DATE 6 MAR. 61 SCALE 1" = 200'

STATE OF WEST VIRGINIA  
 DEPARTMENT OF MINES  
 OIL AND GAS DIVISION  
 CHARLESTON

WELL LOCATION MAP

FILE NO. MARS-434-A

+ DENOTES LOCATION OF WELL ON UNITED STATES TOPOGRAPHIC MAPS, SCALE 1 TO 62,500. LATITUDE AND LONGITUDE LINES BEING REPRESENTED BY BORDER LINES AS SHOWN.

- DENOTES ONE INCH SPACES ON BORDER LINE OF ORIGINAL TRACING.



STATE OF WEST VIRGINIA  
DEPARTMENT OF MINES  
OIL AND GAS DIVISION

*477*  
*146*

*Littleton*

WELL RECORD

Oil or Gas Well **GAS**  
(KIND)

Quadrangle \_\_\_\_\_  
Permit No. *434A*

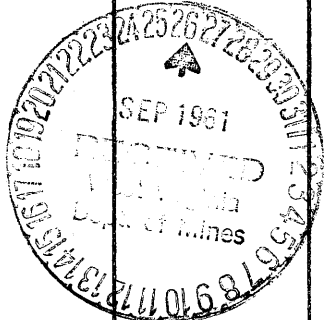
Company **The Manufacturers Light and Heat Company**  
Address **800 Union Trust Bldg., Pittsburgh 19, Pa.**  
Farm **J. B. Winters** Acres **5**  
Location (waters) \_\_\_\_\_  
Well No. **L-1407** Elev. **1327**  
District **Liberty** County **Marshall**  
The surface of tract is owned in fee by \_\_\_\_\_  
Address \_\_\_\_\_  
Mineral rights are owned by \_\_\_\_\_  
Address \_\_\_\_\_  
Drilling commenced **July 15, 1918**  
Drilling completed **August 23, 1918**  
Date Shot \_\_\_\_\_ From \_\_\_\_\_ To \_\_\_\_\_  
With \_\_\_\_\_

Casing and Tubing	Used in Drilling	Left in Well	Packers
Size			Kind of Packer
16			
13			
10			Size of
8 1/4 "		<b>1535</b>	
6 5/8 "		<b>1618</b>	Depth set
5 3/16			
3			Perf. top
2 "		<b>1642</b>	Perf. bottom
Liners Used			Perf. top
			Perf. bottom

Open Flow \_\_\_\_\_ /10ths Water in \_\_\_\_\_ Inch  
\_\_\_\_\_ /10ths Merc. in \_\_\_\_\_ Inch  
Volume **Nov., 1952 - 10,540** Cu. Ft.  
Rock Pressure **Nov., 1952 1/4 28 lbs.** 24 hrs.  
Oil \_\_\_\_\_ bbls., 1st 24 hrs.  
Fresh water \_\_\_\_\_ feet  
Salt water \_\_\_\_\_ feet

CASING CEMENTED \_\_\_\_\_ SIZE \_\_\_\_\_ No. Ft. \_\_\_\_\_ Date \_\_\_\_\_  
COAL WAS ENCOUNTERED AT **1133** FEET \_\_\_\_\_ INCHES  
\_\_\_\_\_ FEET \_\_\_\_\_ INCHES FEET \_\_\_\_\_ INCHES  
\_\_\_\_\_ FEET \_\_\_\_\_ INCHES FEET \_\_\_\_\_ INCHES

Formation	Color	Hard or Soft	Top	Bottom	Oil, Gas or Water	Depth Found	Remarks
Pittsburgh Coal			1133'	1140'			
Little Dunkard Sand			1535'	1540'			
Big Dunkard			1615'				
<b>TOTAL DEPTH</b>				1642'			
					Gas @ 1630-1632 Oil @ 1632-1637		



APR 6 1962

