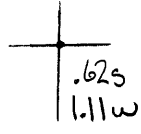


Latitude

Longitude



Topo Location

7.5' Loc. _____ 15' Loc. _____
 _____ (calc.) _____

Company Carnegie Nat Gas

Farm SE Marshall 888

15' Quad _____
(sec.)

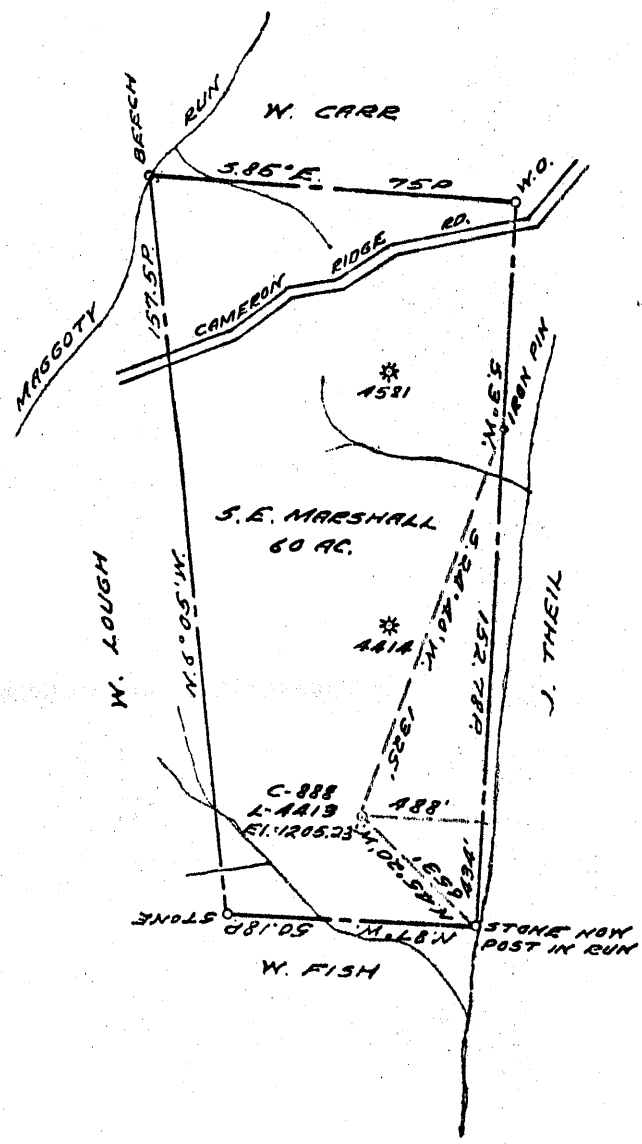
7.5' Quad Cameron

District Liberty

WELL LOCATION PLAT

County 051 Permit 70110

Now : 30413



3.255
1.03W

COAL OWNED BY ACTIVE WELL TO BE RECONSIDERED

NEW LOCATION.....

DRILL DEEPER.....

ABANDONMENT..... *issued 8-5-69*

0-25-28

COMPANY THE MANUFACTURERS LIGHT & HEAT

ADDRESS 800 UNION TRUST BLDG. PCH. PA.

FARM S. E. MARSHALL

TRACT ACRES 60 LEASE NO. 28911

WELL (FARM) NO. 1 SERIAL NO. 4413

ELEVATION (SPIRIT LEVEL) 1205.23

QUADRANGLE CAMERON 3C

COUNTY MARSHALL DISTRICT LIBERTY

ENGINEER Robert M. Heil

ENGINEER'S REGISTRATION NO. 361-E (J.F.)

FILE NO. DRAWING NO. Y-25-85

DATE 1 FEB. 1960 SCALE 1" = 800'

STATE OF WEST VIRGINIA
DEPARTMENT OF MINES
OIL AND GAS DIVISION
CHARLESTON

WELL LOCATION MAP

FILE NO. MARS-413-PH Storage

+ DENOTES LOCATION OF WELL ON UNITED STATES TOPOGRAPHIC MAPS, SCALE 1 TO 62,500. LATITUDE AND LONGITUDE LINES BEING REPRESENTED BY BORDER LINES AS SHOWN.

- DENOTES ONE INCH SPACES ON BORDER LINE OF ORIGINAL TRACING.

S. E. MARSHALL NO. 1 (888) WELL.

Liberty District, Marshall County, W. Va.
 By Carnegie Natural Gas Co.
 On 60 acres.

Drilling commenced Nov. 8, 1918; completed, Dec. 18, 1918.

Shot Jan. 3, 1919, with 12 qts., at 2905-08'.

Shot May 22, 1919, with 16 qts., at 2904-08'.

Shot Oct. 14, 1919, with 16 qts., at 2904-08'.

Shot Feb. 12, 1925, with 20 qts., at 2904-05'.

Shot Apr. 19, 1929, with 40 qts., at 2904-09'.

Oil well.

Record from Wilcox Sept. 27, 1939.

	Top.	Bottom.
Mapletown (Sewickley) Coal	805	- 810
Pittsburgh Coal	898	- 905
Big Dunkard Sand	1372	- 1477
1st Gas Sand	1583	- 1615
1st Salt Sand	1689	- 1719
2nd Salt Sand	1820	- 1850
Maxton Sand	1942	- 1959
Pencil Cave	1985	- 1988
Big Lime	1988	- 2045
Big Injun Sand	2045	- 2300
Squaw Sand	2430	- 2475
Murrysville Sand	2650	- 2665
Gantz Sand	2690	- 2700
30-Ft. Sand (show gas, 2868')	2850	- 2870
Gordon Stray Sand (oil, 2905-08')	2899	-
Total depth		2915