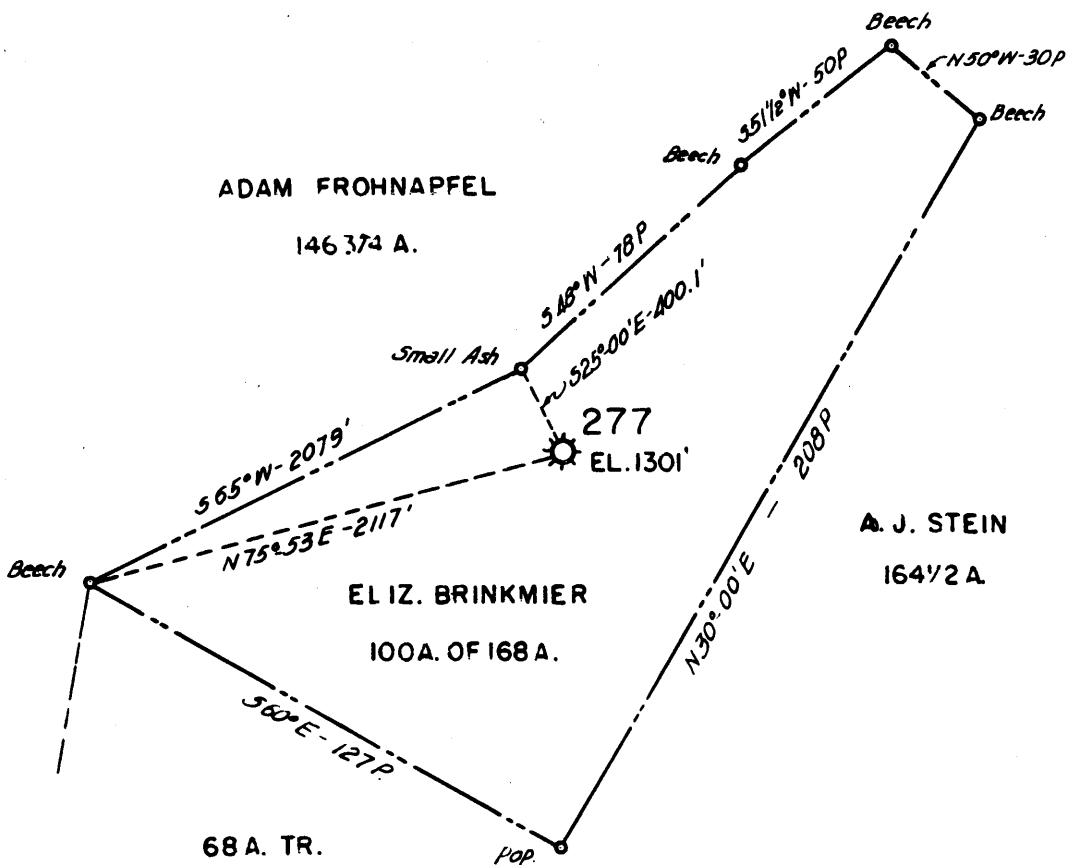


Latitude 39 ° 45 '

Longitude 80 ° 40 '



0.75S  
2.88W

New Location   
 Drill Deeper   
 Abandonment

FORMERLY H.N.G.CO. WELL NO. 277

Company A. M. SNIDER  
 Address HUNDRED, W. VA.  
 Farm ELIZ. BRINKMIER  
 Tract \_\_\_\_\_ Acres 168 Lease No. 2815  
 Well (Farm) No. \_\_\_\_\_ Serial No. 277  
 Elevation (Spirit Level) 1301'  
 Quadrangle LITTLETON  
 County MARSHALL District MEADE  
 Engineer HENRY A. HAIN  
 Engineer's Registration No. 3150  
 File No. A.M.S.-29 Drawing No. \_\_\_\_\_  
 Date 7-6-59' Scale 1"=50 POLES

STATE OF WEST VIRGINIA  
 DEPARTMENT OF MINES  
 OIL AND GAS DIVISION  
 CHARLESTON

### WELL LOCATION MAP

FILE NO. MARS-409-A

NOW: WILHELM & JACKSON

+ Denotes location of well on United States Topographic Maps, scale 1 to 62,500, latitude and longitude lines being represented by border lines as shown.

- Denotes one inch spaces on border line of original tracing.

Meade District, Marshall County, W. Va.

By Hope Natural Gas Co.

Elevation, 1300' B.

Record from C. C. Reed, Oct. 5, 1939.

	Top.	Bottom.
Conductor	0	16
Native coal	665	667
Hopletown (Sewickley) Coal	865	870
Pittsburgh Coal	963	970
Salt Sand	1610	1690
Big Lime	2016	2080
Big Injun Sand	2080	2394
Red rock	2777	2857
Gordon Sand (Gordon gas, no record of depth of pay)	2943	2968
Slate	2968	3000
Slate and lime	3000	3034
Total depth		3034