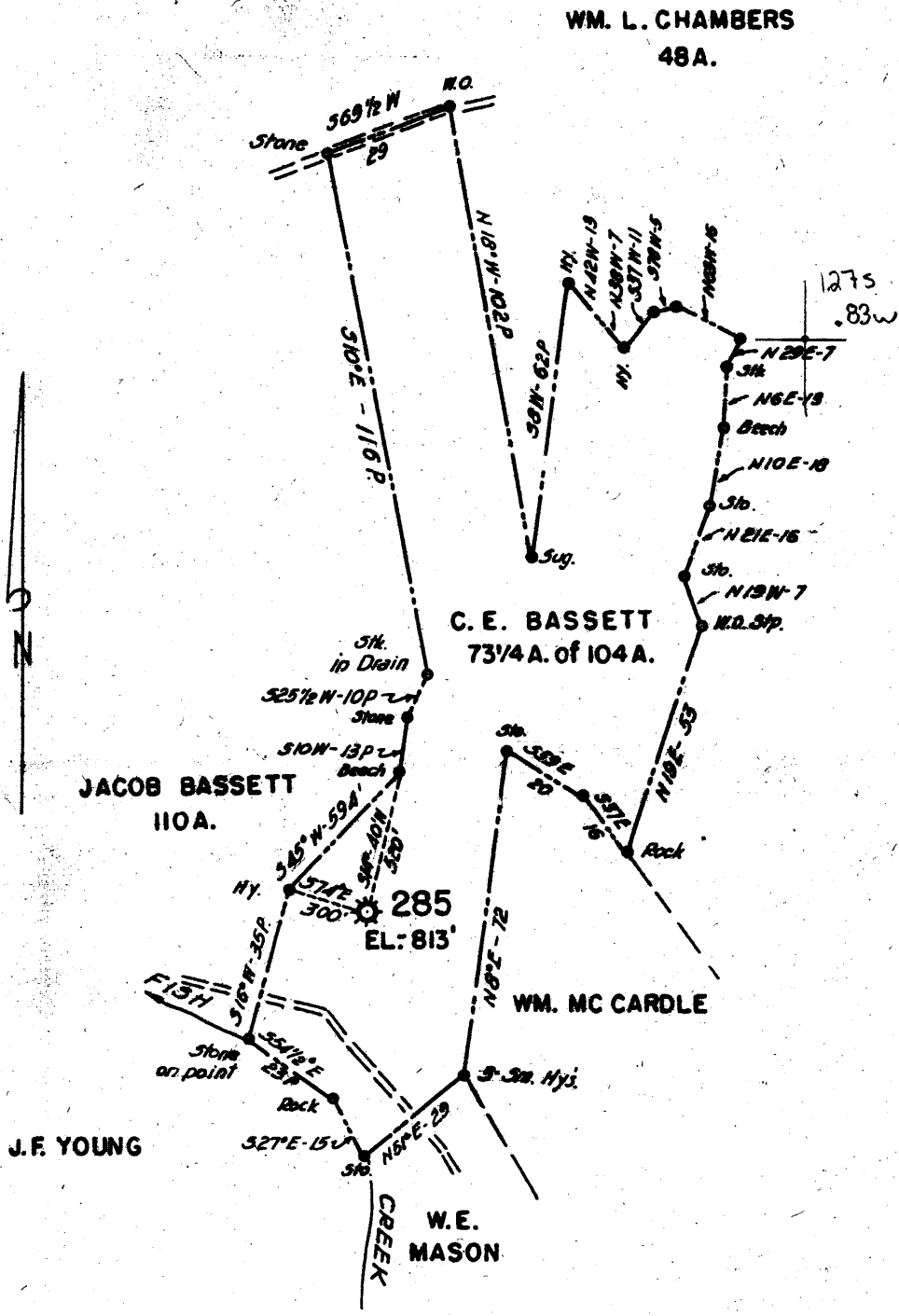


Latitude 39° 50' 30" 47' 30"

Longitude 80° 40'



4.205
0.73W

New Location
 Drill Deeper
 Abandonment

FORMERLY H.N.G.CO. WELL NO 285

Company	A. M. SNIDER
Address	HUNDRED, W. VA.
Farm	C. E. BASSETT
Tract	Acres 104 Lease No. 1984
Well (Farm) No.	Serial No. 285
Elevation (Spirit Level)	813'
Quadrangle	CAMERON
County	MARSHALL District MEADE
Engineer	HENRY A. HAIN
Engineer's Registration No.	3150
File No.	A.M.S.-30 Drawing No.
Date	7-7-59' Scale 1" = 40 POLES

STATE OF WEST VIRGINIA
 DEPARTMENT OF MINES
 OIL AND GAS DIVISION
 CHARLESTON

WELL LOCATION MAP

FILE NO. MARS-403-A

✦ Denotes location of well on United States Topographic Maps, scale 1 to 62,500, latitude and longitude lines being represented by border lines as shown.

— Denotes one inch spaces on border line of original tracing.