

COAL OWNED BY _____
 RECONDITION & PARTIAL, PLUS.

NEW LOCATION.....

DRILL DEEPER.....

ABANDONMENT.....

4.68S
 0.54W₀

0-25-29

COMPANY THE MANUFACTURERS LIGHT & HEAT

ADDRESS 800 UNION TRUST BLDG. PGH. PA.

FARM J.C. & E. REID

TRACT _____ ACRES 150 LEASE No. 5766

WELL (FARM) No. 2 SERIAL No. 3227

ELEVATION (SPIRIT LEVEL) 1086'

QUADRANGLE CAMERON SC

COUNTY MARSHALL DISTRICT LIBERTY

ENGINEER Robert M. Heill (TEV+THG)

ENGINEER'S REGISTRATION No. 361-E

FILE No. _____ DRAWING No. Y-15-927

DATE 6 APRIL 1959 SCALE 1" = 60 RDS.

STATE OF WEST VIRGINIA
 DEPARTMENT OF MINES
 OIL AND GAS DIVISION
 CHARLESTON

WELL LOCATION MAP

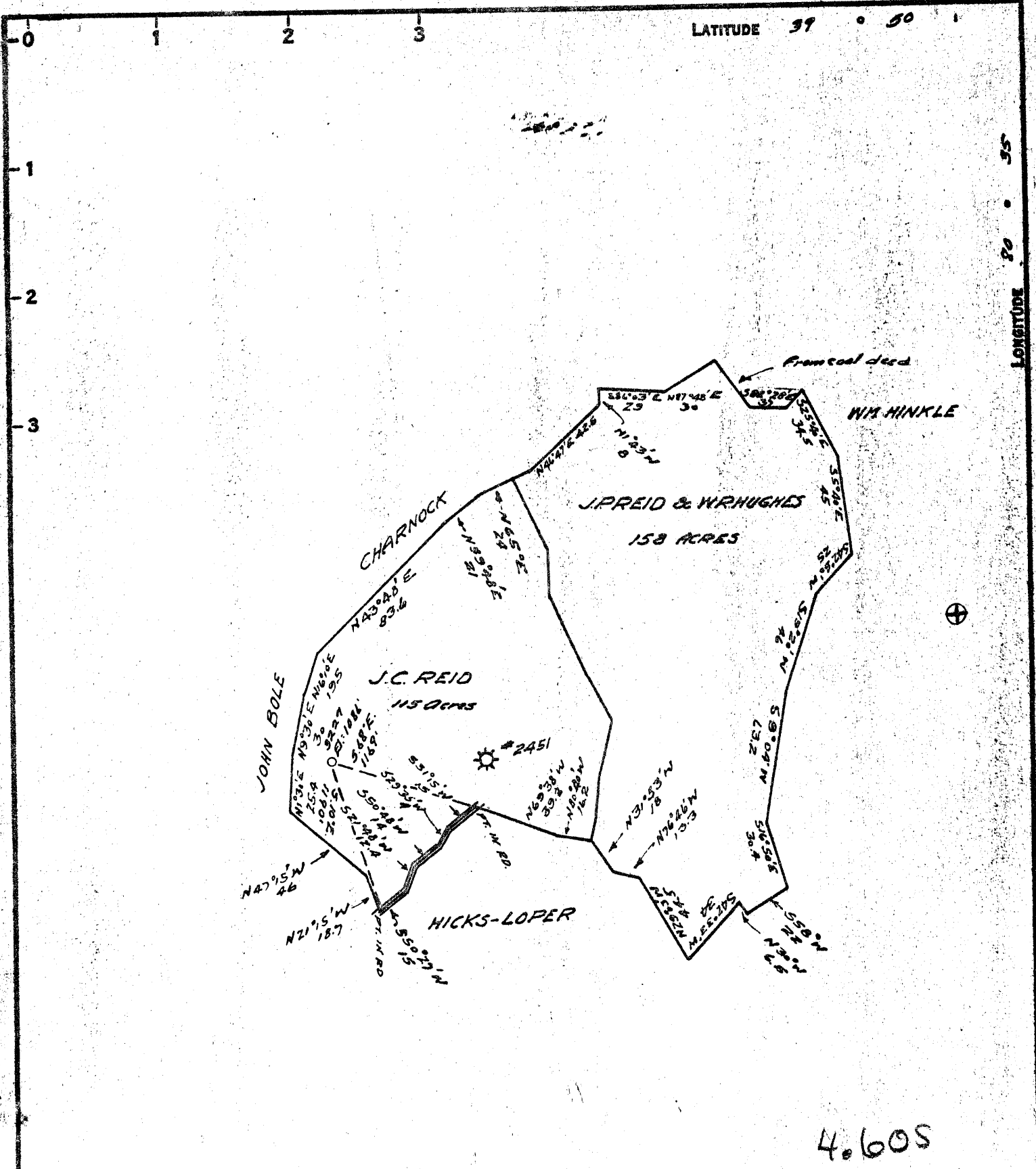
FILE No. 77ARS-3994
 (Storage)

+ DENOTES LOCATION OF WELL ON UNITED STATES TOPOGRAPHIC MAPS, SCALE 1 TO 62,500. LATITUDE AND LONGITUDE LINES BEING REPRESENTED BY BORDER LINES AS SHOWN.

- DENOTES ONE INCH SPACES ON BORDER LINE OF ORIGINAL TRACING.

b-b orig.

(025)



4.60S
0.55W

COAL OWNED BY _____
RECONDITION & PARTIAL, PLUS.

NEW LOCATION.....

DRILL DEEPER.....

ABANDONMENT..... - 8/23/71

0-25-27

COMPANY THE MANUFACTURERS LIGHT & HEAT

ADDRESS 800 UNION TRUST BLDG. PCH. PA.

FARM J.C. & E. REID

TRACT _____ ACRES 150 LEASE NO. 5766

WELL (FARM) NO. 2 SERIAL NO. 3227

ELEVATION (SPIRIT LEVEL) 1086'

QUADRANGLE CAMERON

COUNTY MARSHALL DISTRICT LIBERTY

ENGINEER Robert M. Heil (TRV+TNS)

ENGINEER'S REGISTRATION NO. 361-E

FILE NO. _____ DRAWING NO. Y-15-927

DATE 6 APRIL 1959 SCALE 1" = 600DS.

STATE OF WEST VIRGINIA
DEPARTMENT OF MINES
OIL AND GAS DIVISION
CHARLESTON

WELL LOCATION MAP

FILE NO. (30399) A
TRACS-399-B (A)
(Storage)

+ DENOTES LOCATION OF WELL ON UNITED STATES TOPOGRAPHIC MAPS. SCALE 1 TO 62,500. LATITUDE AND LONGITUDE LINES BEING REPRESENTED BY BORDER LINES AS SHOWN.

- DENOTES ONE INCH SPACES ON BORDER LINE OF ORIGINAL TRACING.

AUG 30 1971

→
30399

Liberty District, Marshall County, W. Va.
By Manufacturers Light & Heat Co.
Completed Feb. 21, 1928.
Record from Mr. Schillhahn Sept. 30, 1939.

	Top,	Bottom,
Pittsburgh Coal	712	718
Murphy Sand	945	960
Little Dunkard Sand	1135	1152
Big Dunkard Sand	1218	1320
Gas Sand	1435	1455
Salt Sand	1500	1535
<i>salt</i> Maxton Sand (gas, 1842')	1750	1850
Big Lime	1850	1885
Big Injun Sand	1885	2125
30-Foot Sand	2490	2510
50-Foot Sand	2680	2697
Gordon Stray Sand	2707	2715
Gordon Sand (gas, 2745')	2738	2770
4th Sand (gas, 2805-2809')	2804	2811
5th Sand	2840	2891
Total depth		2891