

COAL OWNED BY _____
 RECONDITION & PARTIAL PLUG.
 NEW LOCATION...
 DRILL DEEPER...
 ABANDONMENT... issued 5-20-71

4.605
 0.36W

0-25-29

COMPANY THE MANUFACTURERS LIGHT & HEAT CO.
 ADDRESS 800 UNION TRUST BLDG. PGM. PA.
 FARM J. C. & E. REID
 TRACT _____ ACRES 150 LEASE NO. 5786
 WELL (FARM) NO. 1 SERIAL NO. 2451
 ELEVATION (SPIRIT LEVEL) 1295'
 QUADRANGLE CAMERON SC
 COUNTY MARSHALL DISTRICT LIBERTY
 ENGINEER Robert M. Keill (TAV+THG)
 ENGINEER'S REGISTRATION NO. 361-E
 FILE NO. _____ DRAWING NO. Y-15-926
 DATE 6 APRIL 1959 SCALE 1" = 40 RODS.

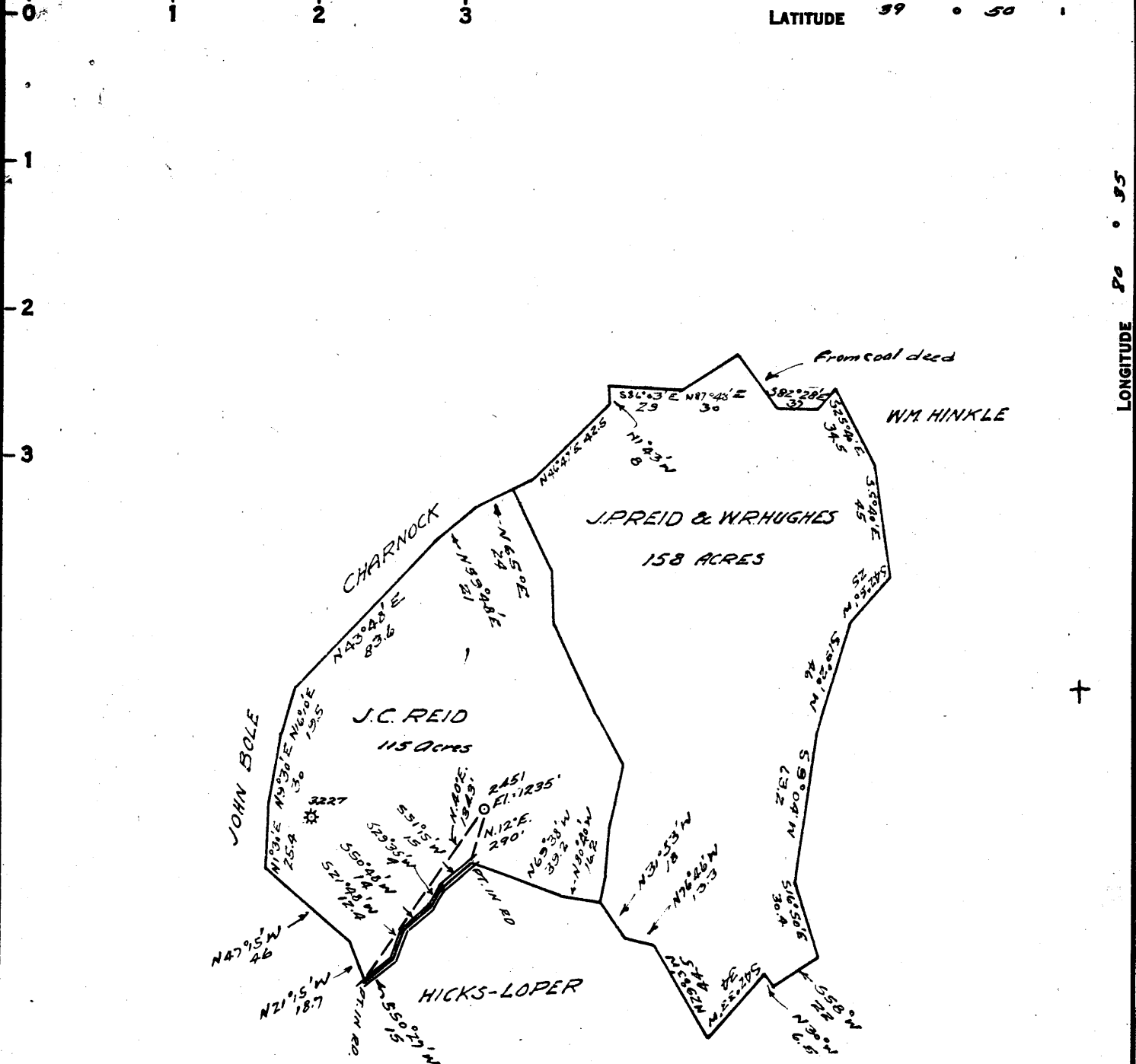
STATE OF WEST VIRGINIA
 DEPARTMENT OF MINES
 OIL AND GAS DIVISION
 CHARLESTON

WELL LOCATION MAP

30398
 FILE NO. PIARS-398-Pp (A)
 (Storage)

+ DENOTES LOCATION OF WELL ON UNITED STATES TOPOGRAPHIC MAPS, SCALE 1 TO 62,500. LATITUDE AND LONGITUDE LINES BEING REPRESENTED BY BORDER LINES AS SHOWN.

- DENOTES ONE INCH SPACES ON BORDER LINE OF ORIGINAL TRACING.



COAL OWNED BY _____
 RECONDITION & PARTIAL PLUG.
 NEW LOCATION
 DRILL DEEPER
 ABANDONMENT

4.655
 0.37W

0-25-29

COMPANY THE MANUFACTURERS LIGHT & HEAT CO.
 ADDRESS 800 UNION TRUST BLDG. PGH. PA.
 FARM J.C. & E. REID
 TRACT _____ ACRES 150 LEASE NO. 5766
 WELL (FARM) NO. 1 SERIAL NO. 2451
 ELEVATION (SPIRIT LEVEL) 1235'
 QUADRANGLE CAMERON
 COUNTY MARSHALL DISTRICT LIBERTY
 ENGINEER Robert M. Heild (TEV+THG)
 ENGINEER'S REGISTRATION NO. 361-E
 FILE NO. _____ DRAWING NO. Y-15-926
 DATE 6 APRIL 1959 SCALE 1" = 60 RODS.

STATE OF WEST VIRGINIA
 DEPARTMENT OF MINES
 OIL AND GAS DIVISION
 CHARLESTON

WELL LOCATION MAP

FILE NO. MArs-398-PA
 (Storage)

+ DENOTES LOCATION OF WELL ON UNITED STATES TOPOGRAPHIC MAPS, SCALE 1 TO 62,500. LATITUDE AND LONGITUDE LINES BEING REPRESENTED BY BORDER LINES AS SHOWN.

- DENOTES ONE INCH SPACES ON BORDER LINE OF ORIGINAL TRACING.

→
30 398

Liberty District, Marshall County, W. Va.
 By Manufacturers Light & Heat Co.
 Completed Oct. 18, 1919.
 Record from Mr. Schillhahn Sept. 30, 1939.

| | Top. | Bottom. |
|------------------------------------|------|---------|
| Pittsburgh Coal | 900 | - 907 |
| Little Dunkard Sand | 1290 | - 1305 |
| Big Dunkard Sand (gas show, 1400') | 1390 | - 1415 |
| Gas Sand | 1620 | - 1630 |
| Salt Sand | 1905 | - 1978 |
| Maxton Sand (gas, 2000') | 1988 | - 2005 |
| Big Lime | 2010 | - 2075 |
| Big Injun Sand | 2075 | - 2330 |
| 50-Foot Sand | 2800 | - 2810 |
| Gordon Sand (gas, 2851') | 2847 | - 2877 |
| 4th Sand | 2900 | - 2910 |
| Total depth | | 2942 |