

COAL OWNED BY \_\_\_\_\_  
Storage

NEW LOCATION   
 DRILL DEEPER   
 ABANDONMENT  *1-25-71*

*1.245*  
*2.60W*

COMPANY *The Manufacturers Light & Heat Co.*  
 ADDRESS *800 Union Trust Bldg. Pgh. Pa.*  
 FARM *Simon T. Yoho*  
 TRACT \_\_\_\_\_ ACRES *232.46* LEASE No. *4333*  
 WELL (FARM) No. *1* SERIAL No. *2762*  
 ELEVATION (SPIRIT LEVEL) *1394'*  
 QUADRANGLE *Littleton NC*  
 COUNTY *Marshall* DISTRICT *Liberty*  
 ENGINEER *Thomas E. Virgin - J.M.*  
 ENGINEER'S REGISTRATION No. *1503*  
 FILE No. \_\_\_\_\_ DRAWING No. *V-13-783*  
 DATE *15 Apr. 1954* SCALE *1"=800'*

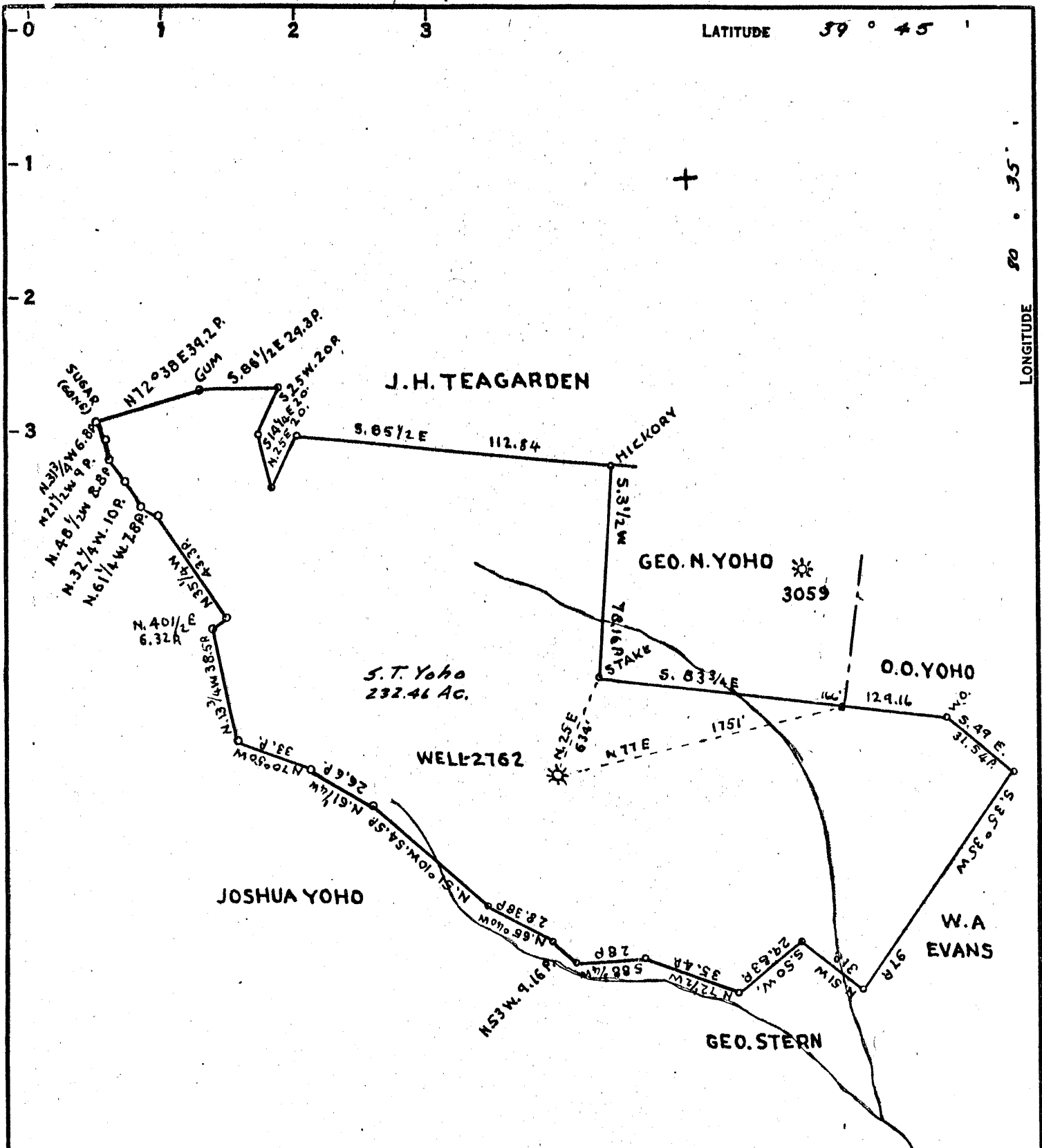
STATE OF WEST VIRGINIA  
 DEPARTMENT OF MINES  
 OIL AND GAS DIVISION  
 CHARLESTON

WELL LOCATION MAP

FILE No. *MARS-365-A-P*

+ DENOTES LOCATION OF WELL ON UNITED STATES TOPOGRAPHIC MAPS, SCALE 1 TO 62,500, LATITUDE AND LONGITUDE LINES BEING REPRESENTED BY BORDER LINES AS SHOWN.

- DENOTES ONE INCH SPACES ON BORDER LINE OF ORIGINAL TRACING.



LATITUDE 39° 45'

LONGITUDE 80° 35'

1.255  
2.58W

COAL OWNED BY \_\_\_\_\_  
Storage

NEW LOCATION...

DRILL DEEPER...

ABANDONMENT...  PARTIAL

COMPANY The Manufacturers Light & Heat Co

ADDRESS 800 Union Trust Bldg. Pgh. Pa.

FARM Simon T. Yoho

TRACT \_\_\_\_\_ ACRES 232.46 LEASE NO. 4333

WELL (FARM) NO. 1 SERIAL NO. 2762

ELEVATION (SPIRIT LEVEL) 1394'

QUADRANGLE Littleton

COUNTY Marshall DISTRICT Liberty

ENGINEER Thomas E. Virgin - V.M.

ENGINEER'S REGISTRATION NO. 1503

FILE NO. \_\_\_\_\_ DRAWING NO. Y-13-883

DATE 15 Apr 1954 SCALE 1"=800'

STATE OF WEST VIRGINIA  
DEPARTMENT OF MINES  
OIL AND GAS DIVISION  
CHARLESTON

**WELL LOCATION MAP**

FILE NO. MARS-365-A

+ DENOTES LOCATION OF WELL ON UNITED STATES TOPOGRAPHIC MAPS. SCALE 1 TO 62,500. LATITUDE AND LONGITUDE LINES BEING REPRESENTED BY BORDER LINES AS SHOWN.

— DENOTES ONE INCH SPACES ON BORDER LINE OF ORIGINAL TRACING.



STATE OF WEST VIRGINIA  
DEPARTMENT OF MINES  
OIL AND GAS DIVISION

WELL RECORD

423

*Handwritten notes:*  
Permit No. 765-1

Permit No. 765-1 Oil or Gas Well Oil (KIND)

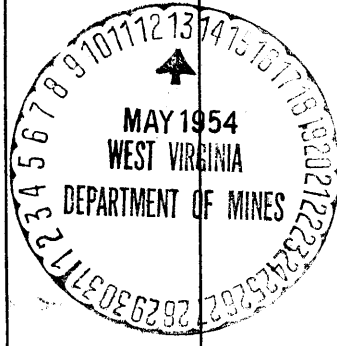
Company THE MANUFACTURERS LIGHT AND HEAT COMPANY  
Address 800 Union Trust Building, Pgh., Penna.  
Farm S. T. Yoho Acres 232.46  
Location (waters) im m  
Well No. 2762 Elev. 1394'  
District Liberty County Marshall  
The surface of tract is owned in fee by \_\_\_\_\_  
Address \_\_\_\_\_  
Mineral rights are owned by \_\_\_\_\_  
Address \_\_\_\_\_  
Drilling commenced August 11, 1922  
Drilling completed October 5, 1922  
Date Shot \_\_\_\_\_ From \_\_\_\_\_ To \_\_\_\_\_  
With \_\_\_\_\_

Casing and Tubing	Used in Drilling	Left in Well	Packers
Size			Kind of Packer
16			
13			
10	305	305	Size of <u>6-5/8 x 4</u>
8 1/4	1620	1620	
6 1/2	2207	2207	Depth set <u>309 1/4</u>
5 3/16			
3			Perf. top
2			Perf. bottom
Liners Used			Perf. top
			Perf. bottom

Open Flow \_\_\_\_\_ /10ths Water in \_\_\_\_\_ Inch  
\_\_\_\_\_ /10ths Merc. in \_\_\_\_\_ Inch  
Volume 537,600 Cu. Ft.  
Rock Pressure 100 lbs. 15 min. hrs.  
Oil \_\_\_\_\_ bbls., 1st 24 hrs.  
Fresh water \_\_\_\_\_ feet  
Salt water \_\_\_\_\_ feet

CASING CEMENTED \_\_\_\_\_ SIZE \_\_\_\_\_ No. Ft. \_\_\_\_\_ Date \_\_\_\_\_  
COAL WAS ENCOUNTERED AT \_\_\_\_\_ FEET \_\_\_\_\_ INCHES  
\_\_\_\_\_ FEET \_\_\_\_\_ INCHES \_\_\_\_\_ FEET \_\_\_\_\_ INCHES  
\_\_\_\_\_ FEET \_\_\_\_\_ INCHES \_\_\_\_\_ FEET \_\_\_\_\_ INCHES

Formation	Color	Hard or Soft	Top	Bottom	Oil, Gas or Water	Depth Found	Remarks
Shale			0	200			
Coal			700	703			
Waynesburg Coal			800	805			
Mapletown Coal			1010	1012			
Pittsburgh Coal			1103	1109			
Big Dunkard Sand			1620	1655			
Gas Sand			1700	1860			
Lime			2010	2025	Water at 2020 Gas at 2025		
Lime			2148	2210			
Big Injun			2210	2505			
Gordon			3108	3127	Gas 3113 to 3117		
Sand			3170	3181			
Shale & Shells			3181	3276			
Total Depth			3276				



Formation	Color	Hard or Soft	Top	Bottom	Oil, Gas or Water	Depth Found	Remarks

Date May 12, \_\_\_\_\_, 19 54

APPROVED THE MANUFACTURERS LIGHT AND HEAT COMPANY

By *Paul B. Ward*  
 ASST. LAND AGENT (Title)