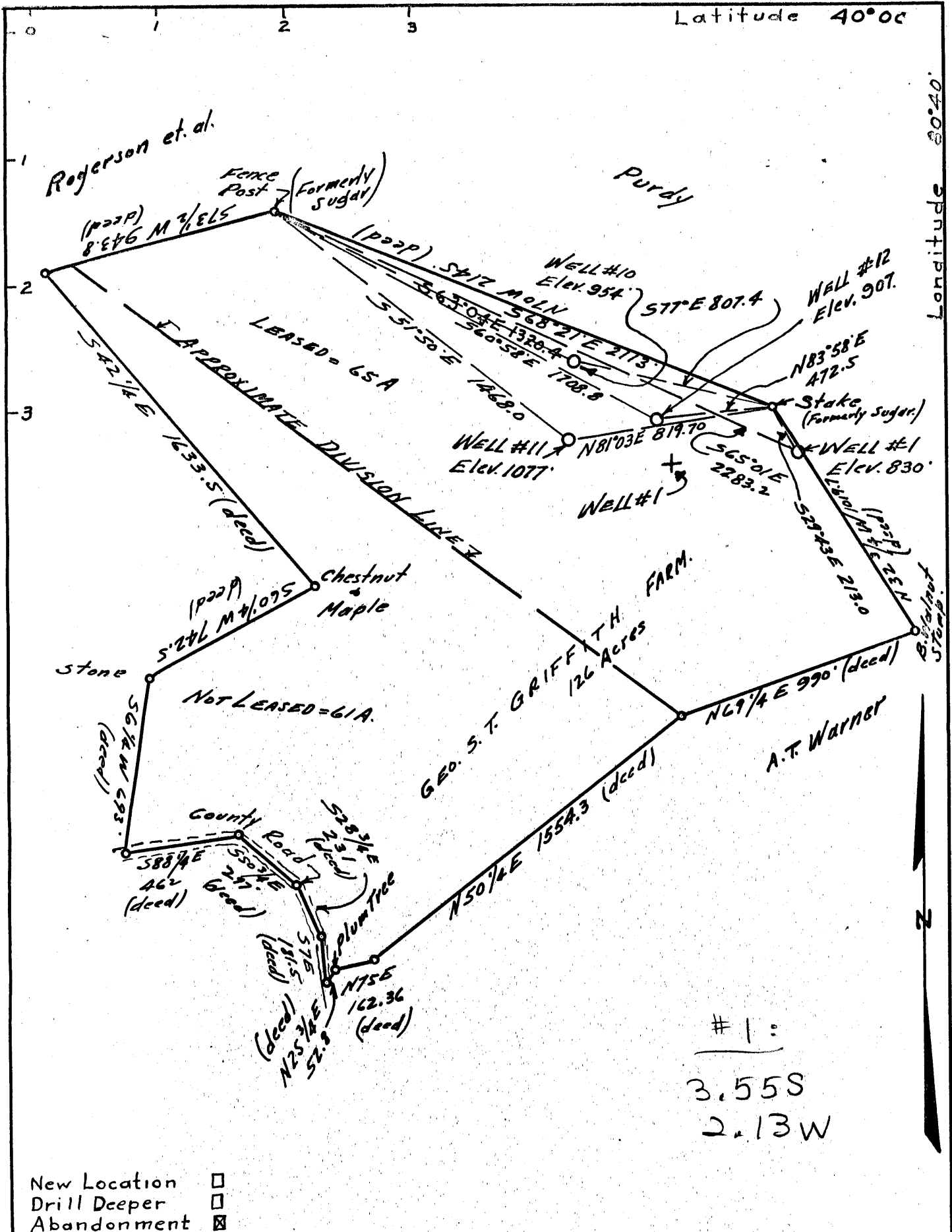


Latitude 40°00'

Longitude 80°40'



#1:
 3.55S
 2.13W

- New Location
- Drill Deeper
- Abandonment

Company GEO. P. WASMITH
 Address GLENDAL, W. VA.
 Farm GEO. S. T. GRIFFITH.
 Tract ONE Acres 65 Lease No. _____
 Well (Farm) No. _____ Serial No. _____
 Quadrangle CAMERON
 County MARSHALL
 District WASHINGTON
 Engineer Walter H. Stegman
 Engineer's Registration No. 394
 File No. _____ Drawing No. _____
 Date MAY 19 1943 Scale 1 INCH = 500 FEET.

STATE OF WEST VIRGINIA
 DEPARTMENT OF MINES
 OIL AND GAS DIVISION
 CHARLESTON

WELL LOCATION MAP

FILE NO. MARS-225-A-#1
MARS-361-A-#11 MARS-360-A-#10

+ Denotes location of well on United States Topographic Maps. scale 1 to 62,500, latitude and longitude lines being represented by border lines as shown.

- Denotes one inch spaces on border line of original tracing.



STATE OF WEST VIRGINIA
DEPARTMENT OF MINES
OIL AND GAS DIVISION

417

360-A

WELL RECORD

Oil or Gas Well Oil
(KIND)

Permit No. _____

Company Geo P. Kasmuth

Address Glen Dale, W Va

Farm Geo T. T. Griffith Acres 65

Location (waters) Little River Creek

Well No. 10 Elev. 954 ft

District Washington County Marshall

The surface of tract is owned in fee by J. Otto Heiss
Address Glen Dale W Va

Mineral rights are owned by Same
Address Same

Drilling commenced 1906

Drilling completed 1906

Date Shot _____ From _____ To _____

With _____

Open Flow _____ /10ths Water in _____ Inch

_____ /10ths Merc. in _____ Inch

Volume _____ Cu. Ft.

Rock Pressure _____ lbs. _____ hrs.

Oil 8 bbls., 1st 24 hrs.

Fresh water _____ feet _____ feet

Salt water _____ feet _____ feet

| Casing and Tubing | Used in Drilling | Left in Well | Packers |
|-------------------|------------------|---------------|----------------|
| Size | | | Kind of Packer |
| 16 | | | |
| 13 | | | |
| 10 | | | Size of |
| 8 3/4 | <u>248</u> | <u>Pulled</u> | |
| 6 5/8 | <u>6 1/4</u> | <u>740</u> | Depth set |
| 5 3/16 | | | |
| 3 | | | Perf. top |
| 2 | <u>772</u> | <u>772</u> | Perf. bottom |
| Liners Used | | | Perf. top |
| | | | Perf. bottom |

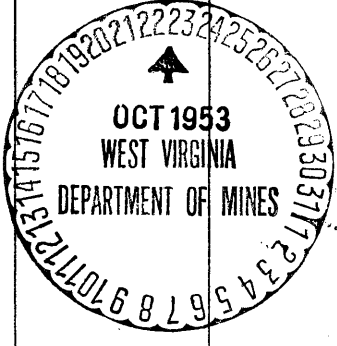
CASING CEMENTED _____ SIZE _____ No. Ft. _____ Date _____

COAL WAS ENCOUNTERED AT 450 FEET _____ INCHES

_____ FEET _____ INCHES FEET _____ INCHES

_____ FEET _____ INCHES FEET _____ INCHES

| Formation | Color | Hard or Soft | Top | Bottom | Oil, Gas or Water | Depth Found | Remarks |
|---------------------|--------------|---------------|------------|------------|-------------------|-------------|---------|
| <u>Low Run Sand</u> | <u>White</u> | <u>Medium</u> | <u>747</u> | <u>769</u> | <u>Oil</u> | <u>760</u> | |



JAN 2 1954
JAN 2 REC'D

