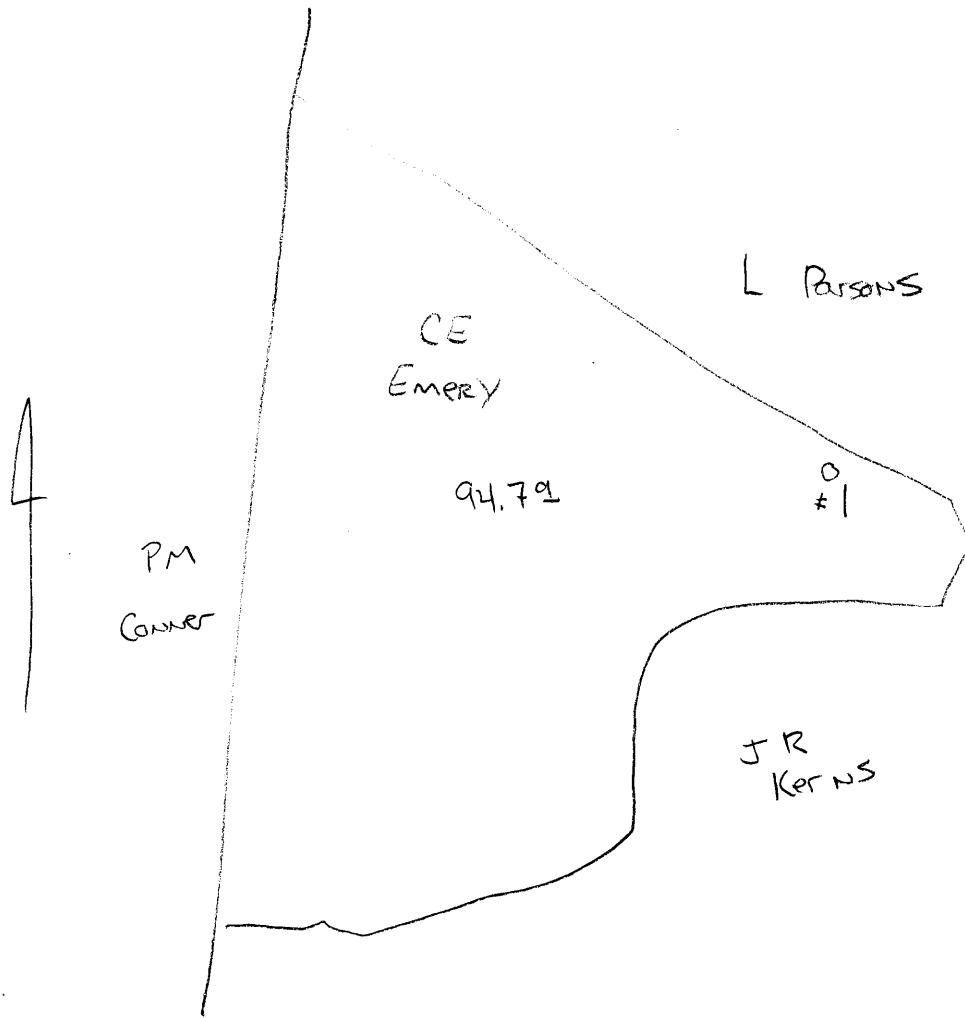


Cameron



30353

C. E. MOBY NO. 1 WELL.

Cameron District, Marshall County, W. Va.

By A. G. Iseninger, Cameron, W. Va.

Abandoned under permit No. 2-.....-A?

Acres.....acres.

Elevation, .....' L.

Drilling completed Sept. 1928.

5" casing, 2187'; 2" tubing, 3109'; all left in.

Coal was encountered at 930-935'.

Gas well. Record to Dept. of Mines stopped Sept. 9, 1952.

Record to ROT from Mrs. Griffith Dec. 10, 1952. C.F.No.403.

	Top.	Bottom.
Pittsburgh Coal	930	- 935
Little Buckard Sand	1258	- 1275
Big Buckard Sand	1375	- 1400
Salt Sand	1665	- 1865
Big Lime	1995	- 2040
Big Injun Sand	2040	- 2320
Garden Stray Sand	2880	- 2890
Garden Sand	2920	- 2946
4th Sand	2982	- 2995
5th Sand	3058	- 3059
Total depth		3109



X03

STATE OF WEST VIRGINIA  
DEPARTMENT OF MINES  
OIL AND GAS DIVISION

**WELL RECORD**

Permit No. MARS-353-A

Oil or Gas Well \_\_\_\_\_  
(KIND)

Company A. G. Isiminger  
 Address Cameron, W. Va.  
 Farm C. E. Emery. Acres \_\_\_\_\_  
 Location (waters) \_\_\_\_\_  
 Well No. One Elev. \_\_\_\_\_  
 District Carehohi County Marshall  
 The surface of tract is owned in fee by \_\_\_\_\_  
 Address \_\_\_\_\_  
 Mineral rights are owned by \_\_\_\_\_  
 Address \_\_\_\_\_  
 Drilling commenced \_\_\_\_\_  
 Drilling completed 9/ 1928  
 Date Shot From \_\_\_\_\_ To \_\_\_\_\_  
 With \_\_\_\_\_  
 Open Flow /10ths Water in \_\_\_\_\_ Inch  
 /10ths Merc. in \_\_\_\_\_ Inch  
 Volume \_\_\_\_\_ Cu. Ft.  
 Rock Pressure \_\_\_\_\_ lbs. \_\_\_\_\_ hrs.  
 Oil \_\_\_\_\_ bbls., 1st 24 hrs.  
 Fresh water \_\_\_\_\_ feet \_\_\_\_\_ feet  
 Salt water \_\_\_\_\_ feet \_\_\_\_\_ feet

Casing and Tubing	Used in Drilling	Left in Well	Packers
Size			Kind of Packer _____
16			
13			Size of _____
10			Depth set _____
8 1/4			
6 1/2			Perf. top _____
5 3/16	1 1/2	2185	Perf. bottom _____
3			Perf. top _____
2	/	3109	Perf. bottom _____
Liners Used			Perf. top _____
			Perf. bottom _____

CASING CEMENTED \_\_\_\_\_ SIZE \_\_\_\_\_ No. Ft. \_\_\_\_\_ Date \_\_\_\_\_

COAL WAS ENCOUNTERED AT 930 FEET 60 INCHES  
 \_\_\_\_\_ FEET \_\_\_\_\_ INCHES \_\_\_\_\_ FEET \_\_\_\_\_ INCHES  
 \_\_\_\_\_ FEET \_\_\_\_\_ INCHES \_\_\_\_\_ FEET \_\_\_\_\_ INCHES

Formation	Color	Hard or Soft	Top	Bottom	Oil, Gas or Water	Depth Found	Remarks
Pgh Coal			930	935			
Lt. Dunkard			1258	1275			
Big. "			1375	1400			
Salt.			1665	1865			
Big Line			1995	2040			
Big Injun			2040	2320			
Gordon Stray			2880	2890			
Gordon			2920	2946			
4th			2982	2995			
5th			3058	3059			
Total Depth				3109			

C



DEC 10 1952