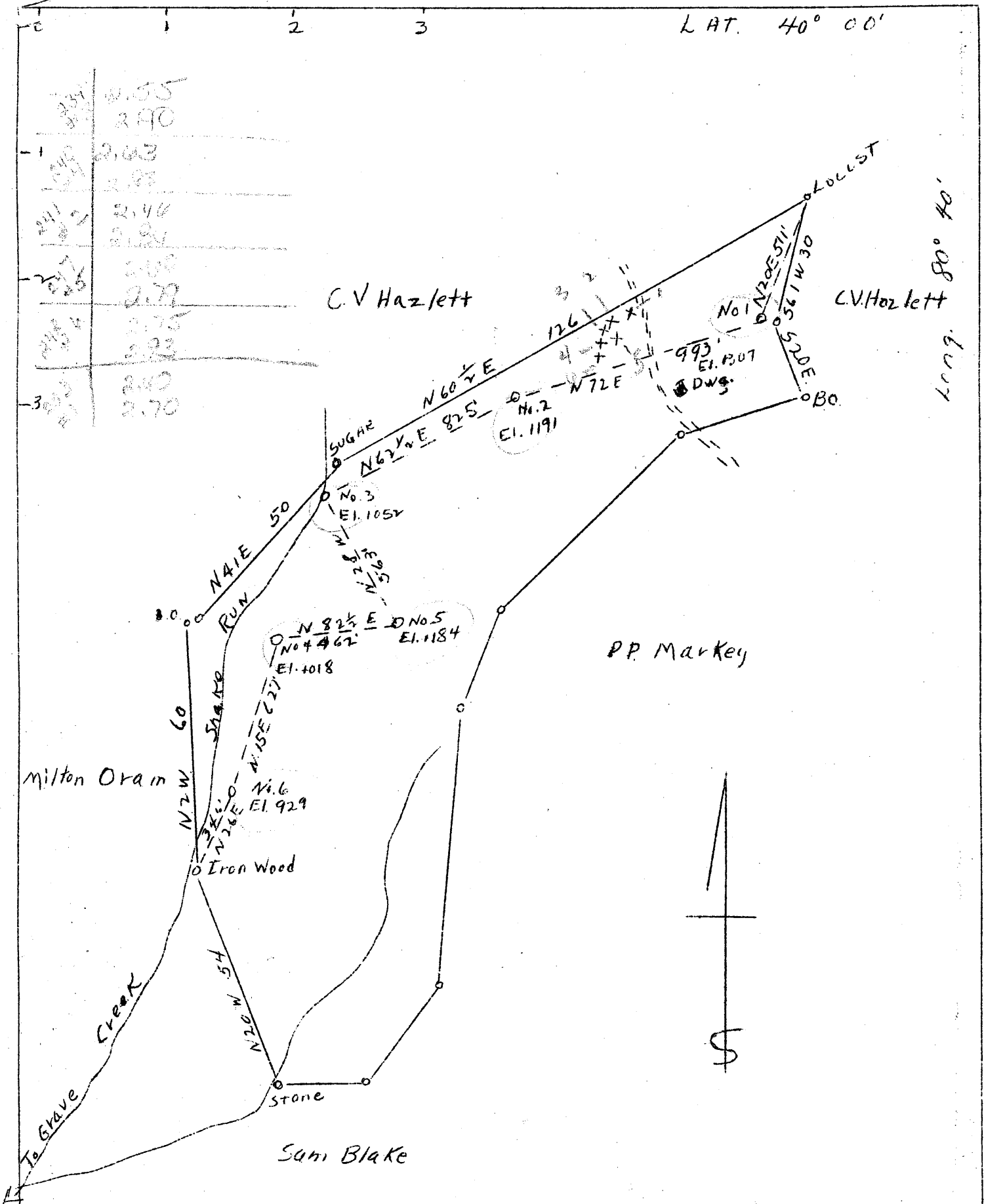


LAT. 40° 00'



ABANDONMENT X

COMPANY W. M. MOSES  
 ADDRESS SALEM, W. VA.  
 FARM PHILIP L. MARKEY HRS.  
 TRACT ACRES 86 1/4 LEASE NO. \_\_\_\_\_  
 WELL (FARM) NO. 1-2-3-4-5-6 SERIAL NO. \_\_\_\_\_  
1307-1191-1052-1018  
 ELEVATION (SPIRIT) LEVEL 1184-929  
 QUADRANGLE CAMERON  
 COUNTY MARSHALL DIST. UNION  
 ENGINEER A. K. WESTFALL  
 ENGINEER REG. NO. \_\_\_\_\_  
 FILE NO. \_\_\_\_\_ DRAWING NO. \_\_\_\_\_  
 DATE 7/20/45 SCALE 1" - 30 POLES

STATE OF WEST VIRGINIA  
 DEPARTMENT OF MINES  
 OIL AND GAS DIVISION  
 CHARLESTON  
 WELL LOCATION MAP  
 FILE NO. MARS-239A-NO. 3; 240A-NO. 4;  
241A-NO. 2; 247A-NO. 5; 248A-NO. 6;  
253A- NO. 1  
 + DENOTES LOCATION OF WELL ON U.S. TOPOGRAPHIC MAPS, SCALE 1 TO 62,500  
 LATITUDE AND LONGITUDE LINES BEING REPRESENTED BY BORDER LINES AS SHOWN.  
 - DENOTES ONE INCH SPACES ON BORDER LINE OF ORIGINAL TRACING.

STATE OF WEST VIRGINIA  
DEPARTMENT OF MINES  
OIL AND GAS DIVISION

786

WELL RECORD

Permit No. MARS-240-A

Oil or Gas Well Oil  
(KIND)

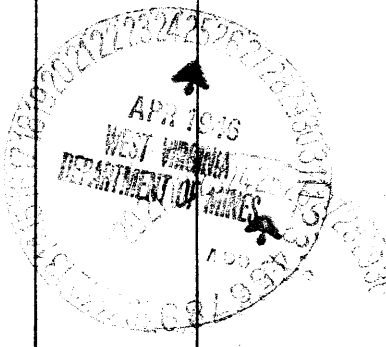
Company Geo. P. Wasmuth  
 Address Glen Dale, West Va  
 Farm Phillip L. Maskey Acres  
 Location (waters) Little Gwynn Creek  
 Well No. 4 Elev.  
 District Union County Marshall  
 The surface of tract is owned in fee by P.L. Maskey Heirs  
 Address Wheeler, W. Va  
 Mineral rights are owned by Same  
 Address Same  
 Drilling commenced 1925  
 Drilling completed 1925  
 Date Shot From To  
 With

Casing and Tubing	Used in Drilling	Left in Well	Packers
Size			Kind of Packer
16			
13			
10			Size of
8 3/4	<u>360</u>	<u>Pulled</u>	
6 3/8	<u>1070</u>	<u>1070</u>	Depth set
5 3/16	<u>1350</u>	<u>1350</u>	
3			Perf. top
2	<u>1480</u>	<u>1480</u>	Perf. bottom
Liners Used			Perf. top
			Perf. bottom

Open Flow 100 Water in \_\_\_\_\_ Inch  
 /10ths Merc. in \_\_\_\_\_ Inch  
 Volume \_\_\_\_\_ Cu. Ft.  
 Rock Pressure \_\_\_\_\_ lbs \_\_\_\_\_ hrs.  
 Oil \_\_\_\_\_ bbls., 1st 24 hrs.  
 Fresh water \_\_\_\_\_ feet \_\_\_\_\_ feet  
 Salt water \_\_\_\_\_ feet \_\_\_\_\_ feet

CASING CEMENTED \_\_\_\_\_ SIZE \_\_\_\_\_ No. Ft. \_\_\_\_\_ Date \_\_\_\_\_  
 COAL WAS ENCOUNTERED AT 349 FEET \_\_\_\_\_ INCHES  
 \_\_\_\_\_ FEET \_\_\_\_\_ INCHES FEET \_\_\_\_\_ INCHES  
 \_\_\_\_\_ FEET \_\_\_\_\_ INCHES FEET \_\_\_\_\_ INCHES

Formation	Color	Hard or Soft	Top	Bottom	Oil, Gas or Water	Depth Found	Remarks
<u>Big Injun</u>	<u>White</u>	<u>Hard</u>	<u>1350</u>	<u>1480</u>	<u>Oil</u>	<u>1470</u> ✓	



6-6 (021)

Formation	Color	Hard or Soft	Top	Bottom	Oil, Gas or Water	Depth Found	Remarks

Date April 23<sup>rd</sup>, 1946

APPROVED Geo P. Masmuths, Owner

By \_\_\_\_\_ (Title)