

Latitude

Longitude

+-----+  
 | 2.44s |  
 | 1.41w |  
 +-----+

Topo Location

7.5' Loc. \_\_\_\_\_ 15' Loc. \_\_\_\_\_  
 \_\_\_\_\_ (calc.) \_\_\_\_\_

MTW Co. Rep # 62

Company Whedding

Farm GW Hicks #1

15' Quad \_\_\_\_\_  
(sec.)

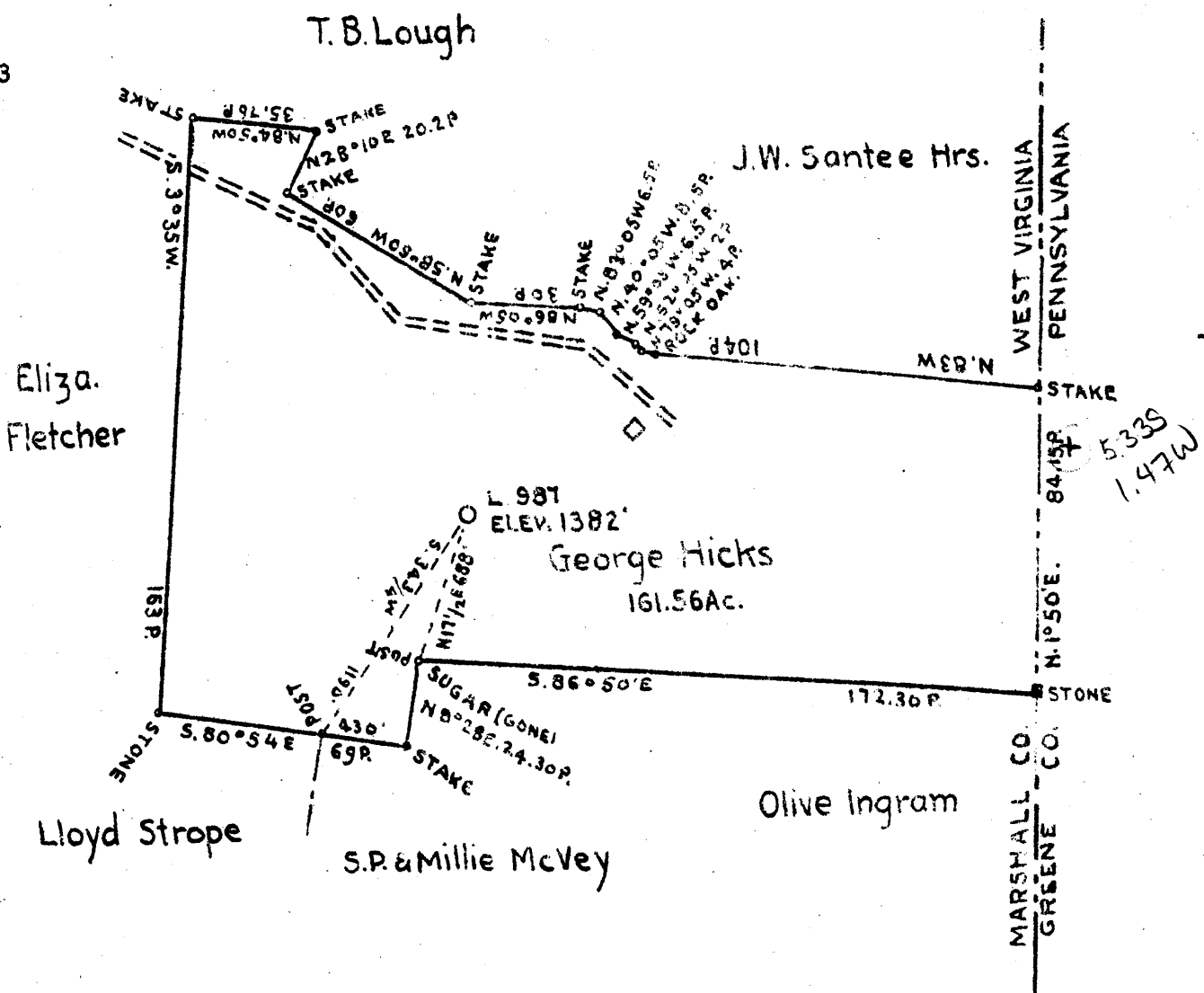
7.5' Quad Cameron

District Cameron

WELL LOCATION PLAT

County 051 Permit 70198

Now Permit **30233**



COAL OWNED BY T.L. Rogerson, Moundsville W.Va.

NEW LOCATION   
 DRILL DEEPER   
 ABANDONMENT

COMPANY The Manufacturers Light & Heat Co.  
 ADDRESS 800 Union Trust Bldg Pittsburgh Pa  
 FARM George Hicks  
 TRACT \_\_\_\_\_ ACRES 161.56 LEASE NO. 2340  
 WELL (FARM) NO. 1 SERIAL NO. 987  
 ELEVATION (SPIRIT LEVEL) 1382'  
 QUADRANGLE Cameron 8EC  
 COUNTY Marshall DISTRICT Cameron  
 ENGINEER J. M. Merwin  
 ENGINEER'S REGISTRATION NO. \_\_\_\_\_  
 FILE NO. Well Bk. #2B P. 62 DRAWING NO. Y-11-202  
 DATE November 20-1945 SCALE 1" = 800'

STATE OF WEST VIRGINIA  
 DEPARTMENT OF MINES  
 OIL AND GAS DIVISION  
 CHARLESTON

WELL LOCATION MAP

FILE NO. MARS-233-A

+ DENOTES LOCATION OF WELL ON UNITED STATES TOPOGRAPHIC MAPS. SCALE 1 TO 62,500. LATITUDE AND LONGITUDE LINES BEING REPRESENTED BY BORDER LINES AS SHOWN.

- DENOTES ONE INCH SPACES ON BORDER LINE OF ORIGINAL TRACING.

Cameron District, Marshall County, W. Va.  
Whooling Natural Gas Co.  
3/4 mi. S. of P. P. Lough No. 1; 2 mi. ± N. E. of Cameron.  
Elevation, 1290' B.

	Top.	Bottom.
Pittsburgh Coal	830	
Big Injun Sand	1990	2280
Hinevah (Gordon Strey) Sand (gas)	2845	2880
Total depth		3276

(No Gordon, 4th or 5th).



279

STATE OF WEST VIRGINIA  
DEPARTMENT OF MINES  
OIL AND GAS DIVISION

WELL RECORD

Ab 233-A  
Permit No. Drilled in 1896

Oil or Gas Well Gas  
(KIND)

Company The Manufacturers Light & Heat Company  
Address 800 Union Trust Bldg., Pittsburgh, Pa.  
Farm G. W. Hicks Acres 158  
Location (waters).....  
Well No. 1 - 987 Elev. 1382 ft.  
District Cameron County Marshall  
The surface of tract is owned in fee by George E Fletcher  
Address Cameron, WVa.  
Mineral rights are owned by The Mfrs Light & Heat Co.  
800 Union Trust Bldg Address Pittsburgh, Pa.  
Drilling commenced ?  
Drilling completed Aug. 11th, 1896  
Date Shot ? From 30-Ft. Sand  
With 10 qts.

Casing and Tubing	Used in Drilling	Left in Well	Packers
Size			
16			Kind of Packer.....
18			
10	1180'	-	Size of.....
8"	1500'	-	
6"	2020'	-	Depth set.....
5 3/16			
3			Perf. top.....
2			Perf. bottom.....
Liners Used			Perf. top.....
			Perf. bottom.....

Open Flow /10ths Water in..... Inch  
/10ths Merc. in..... Inch  
Volume..... Cu. Ft.  
Rock Pressure..... lbs..... hrs.  
Oil..... bbls., 1st 24 hrs.  
Fresh water..... feet..... feet  
Salt water..... feet..... feet

CASING CEMENTED..... SIZE..... No. Ft..... Date.....  
COAL WAS ENCOUNTERED AT 830 FEET ? INCHES  
..... FEET..... INCHES..... FEET..... INCHES  
..... FEET..... INCHES..... FEET..... INCHES

Formation	Color	Hard or Soft	Top	Bottom	Oil, Gas or Water	Depth Found	Remarks
18" Conductor			16				
14" O.D. Casing			208				
Pittsburgh Coal		<i>Cemented</i>	830	<i>π 870 - P-1990 D-2280</i>			
Big Injun Sand			1990	2280	Break at 2065 ft.		
Gordon Stray of Nineveh 30-ft.			2845	<i>P-2845</i> 2880	Light flow of gas at 2850 ft. Increased flow gas 2855 ft. do. 2860 ft.		
Total depth				2900 3276 -			No Gordon, 4th or 5th Sands

