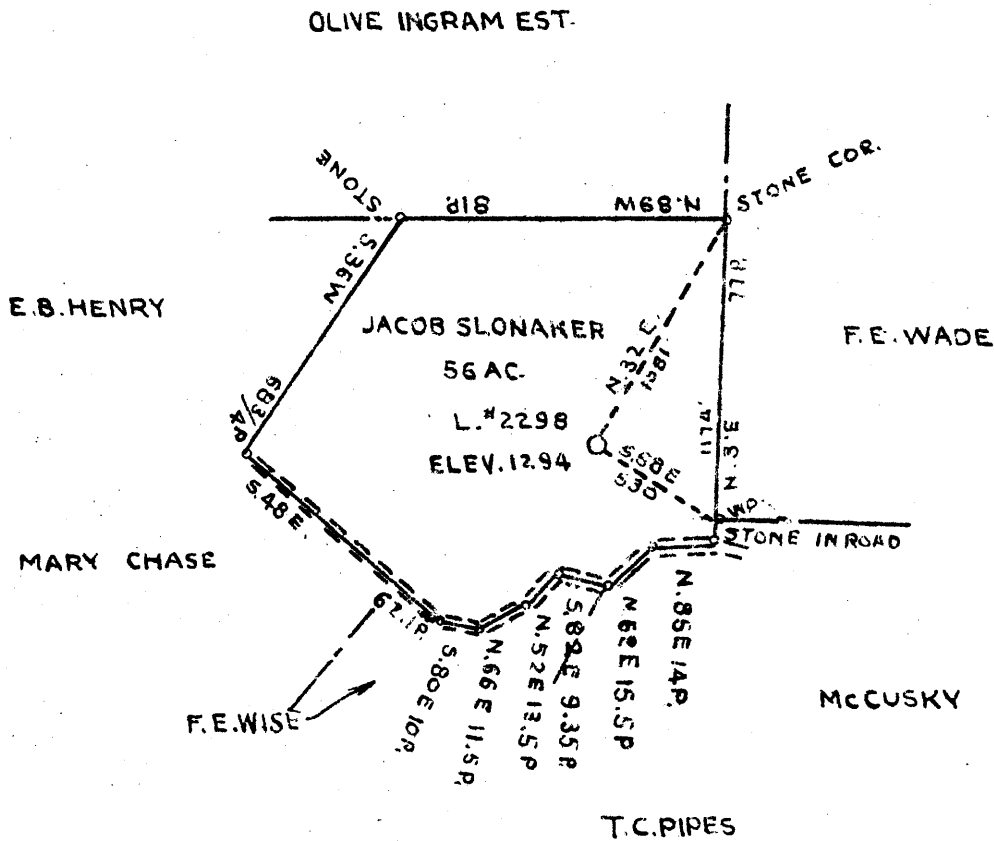


+ 0.73S  
1.84W

1  
2  
3



COAL OWNED BY T.L. ROGERSON

NEW LOCATION

DRILL DEEPER

ABANDONMENT

COMPANY THE MANUFACTURERS LIGHT AND HEAT CO.

ADDRESS 30 UNION TRUST BLD'G. PITTSBURGH PA.

FARM JACOB SLONAKER

TRACT \_\_\_\_\_ ACRES 56 LEASE NO. 2070

WELL (FARM) NO. L SERIAL NO. 2298

ELEVATION (SPIRIT LEVEL) 12.94

QUADRANGLE CAMERON (S.E. 1/4)

COUNTY MARSHALL DISTRICT LIBERTY

ENGINEER J. L. M...

ENGINEER'S REGISTRATION NO. \_\_\_\_\_

FILE NO. \_\_\_\_\_ DRAWING NO. Y-11-192

DATE NOVEMBER 3 1945 SCALE 1" = 800

STATE OF WEST VIRGINIA  
DEPARTMENT OF MINES  
OIL AND GAS DIVISION  
CHARLESTON

WELL LOCATION MAP

FILE NO. MARS-231-A

+ DENOTES LOCATION OF WELL ON UNITED STATES TOPOGRAPHIC MAPS, SCALE 1 TO 62,500. LATITUDE AND LONGITUDE LINES BEING REPRESENTED BY BORDER LINES AS SHOWN.

-- DENOTES ONE INCH SPACES ON BORDER LINE OF ORIGINAL TRACING.

Cameron District, Marshall County, W. Va.  
By Manufacturers Light & Heat Co.  
Completed Sept. 5, 1913.  
Record from Mr. Schillhelm Sept. 30, 1939.

	Top.	Bottom.
Pittsburgh Coal (some gas)	866	- 872
Little Dunkard Sand	1275	- 1310
Big Dunkard Sand	1385	- 1470
Gas Sand	1560	- 1600
Salt Sand (gas, 1658')	1635	- 1660
Total depth		1660

JACOB SLONAKER NO. 1 (2298) WELL.

Cameron District, Marshall County, W. Va.

By The Manufacturers Light & Heat Co., 800 Union Trust Bldg., Pittsburgh, Pa.  
Abandoned under permit Mars-22222-A.

On 60 acres.

Elevation, 1294' ±.

Surface owned by Jacob Slonaker, Credit in First National Bank, Cameron, W. Va., and minerals by The Manufacturers Light & Heat Co., 800 Union Trust Bldg., Pittsburgh, Pa.

Drilling commenced Aug. 17, 1918; completed Sept. 5, 1918.

Rock pressure, 200 lbs. in  $\frac{1}{8}$  hr.

Fresh water at 86 and 995'.

10" casing, 256'; 8", 1290'; 4" tubing, 1654'.

Anchor packer, 3" x 4, set at 1604'.

Coal was encountered at 585-590, 764-770, and 866-872'.

Gas well. Abandonment reported to Dept. of Mines Oct. 31, 1945.

Record to RCT from Mrs. Griffith Jan. 8, 1946. Old File No. 278.

	Top.	Bottom.
Clay	0	14
Sand	14	80
Slate (little water at 86')	80	150
Lime	150	220
Slate	220	290
Rock	290	340
Slate	340	420
Lime	420	480
Sand	480	585
Waynesburg Coal	585	590
Slate	590	620
Lime	620	764
Mapletown (Sewickley) Coal	764	770
Lime	770	866
Pittsburgh Coal (some gas)	866	872
Lime	872	940
Slate	940	980
Sand (water at 995')	980	1010
Red rock	1010	1060
Lime	1060	1080
Sand (gas at 1085')	1080	1095
Red rock	1095	1155
Slate	1155	1190
Red rock	1190	1240
Lime	1240	1275
Red rock	1275	1275
Little Dunkard Sand	1275	1310
Slate	1310	1385
Big Dunkard Sand	1385	1430
Slate	1430	1490
Lime	1490	1560
Gas Sand	1560	1600
Slate	1600	1635
Salt Sand (gas at 1658')	1635	1660
Total depth		1660



278

STATE OF WEST VIRGINIA  
DEPARTMENT OF MINES  
OIL AND GAS DIVISION

WELL RECORD

Permit No. MAROS-231-A  
Drilled in 1918

Oil or Gas Well Gas  
(KIND)

Company The Manufacturers Light & Heat Company  
Address 800 Union Trust Bldg., Pittsburgh, Pa.  
Farm Jacob Slonaker Acres 60  
Location (waters) \_\_\_\_\_  
Well No. 2298 Elev. 1294 ft.  
District Cameron County Marshall  
The surface of tract is owned in fee by Jacob Slonaker - Credit  
in First Ntl Bank Address Cameron, W. Va.  
Mineral rights are owned by The Mfrs Light & Heat Co.  
800 Union Trust Bldg. Address Pittsburgh, Pa.  
Drilling commenced 8/17/18  
Drilling completed 9/5/18  
Date Shot \_\_\_\_\_ From \_\_\_\_\_ To \_\_\_\_\_  
With \_\_\_\_\_

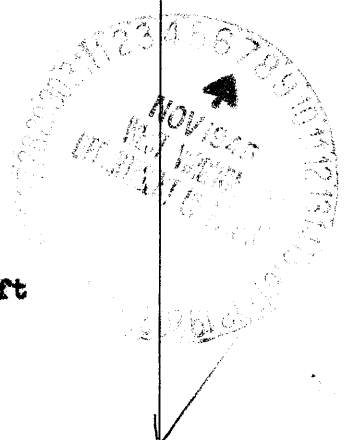
Casing and Tubing	Used in Drilling	Left in Well	Packers
Size			
16			Kind of Packer
18			<u>Anchor</u>
20	<u>256'</u>	<u>256'</u>	Size of
8 1/4	<u>1290'</u>	<u>1290'</u>	<u>8 1/4 x 4</u>
6 1/2			Depth set
5 3/16			<u>160 1/2'</u>
4		<u>165 1/2'</u>	Perf. top
2			Perf. bottom
Liners Used			Perf. top
			Perf. bottom

Open Flow \_\_\_\_\_ /10ths Water in \_\_\_\_\_ Inch  
\_\_\_\_\_ /10ths Merc. in \_\_\_\_\_ Inch  
Volume \_\_\_\_\_ Cu. Ft.  
Rock Pressure W 200 lbs. 1/2 hrs.  
Oil \_\_\_\_\_ bbls., 1st 24 hrs.  
Fresh water 86-995 feet  
Salt water \_\_\_\_\_ feet

CASING CEMENTED \_\_\_\_\_ SIZE \_\_\_\_\_ No. Ft. \_\_\_\_\_ Date \_\_\_\_\_

COAL WAS ENCOUNTERED AT 585 FEET 60 INCHES  
76 1/2 FEET 72 INCHES 866 FEET 72 INCHES  
\_\_\_\_\_ FEET \_\_\_\_\_ INCHES \_\_\_\_\_ FEET \_\_\_\_\_ INCHES

Formation	Color	Hard or Soft	Top	Bottom	Oil, Gas or Water	Depth Found	Remarks
Clay			0	1 1/4			
Sand			1 1/4	80	Little water at 86ft		
Slate			80	150			
Lime			150	220			
Slate			220	290			
Rock			290	340			
Slate			340	420			
Lime			420	480			
Sand			480	585			
Waynesburg Coal			585	590			
Slate			590	620			
Lime			620	76 1/2			
Mapletown Coal			76 1/2	770			
Lime			770	866			
Pittsburgh Coal			866	872	Some gas		
Lime			872	940			
Slate			940	980			
Sand			980	1010	Water at 995		
Red Rock			1010	1060			
Lime			1060	1080			
Sand			1080	1095	Gas at 1085		
Red Rock			1095	1155			
Slate			1155	1190			
Red Rock			1190	1240			
Lime			1240	1255			
Red Rock			1255	1275			
Little Dunkard			1275	1310			
Slate			1310	1385			
Big Dunkard			1385	1430			
Slate			1430	1490			
Lime			1490	1560			
Gas Sand			1560	1600	Gas at 1658 ft		
Slate			1600	1635			
Salt Sand			1635	1660			
Total Depth				1660			



Formation	Color	Hard or Soft	Top	Bottom	Oil, Gas or Water	Depth Found	Remarks

Date October 31st, 194 5

APPROVED THE MANUFACTURERS LIGHT & HEAT COMPANY, Owner

By Harry H. Fowler  
 Land Dept. (Title) Office Manager

