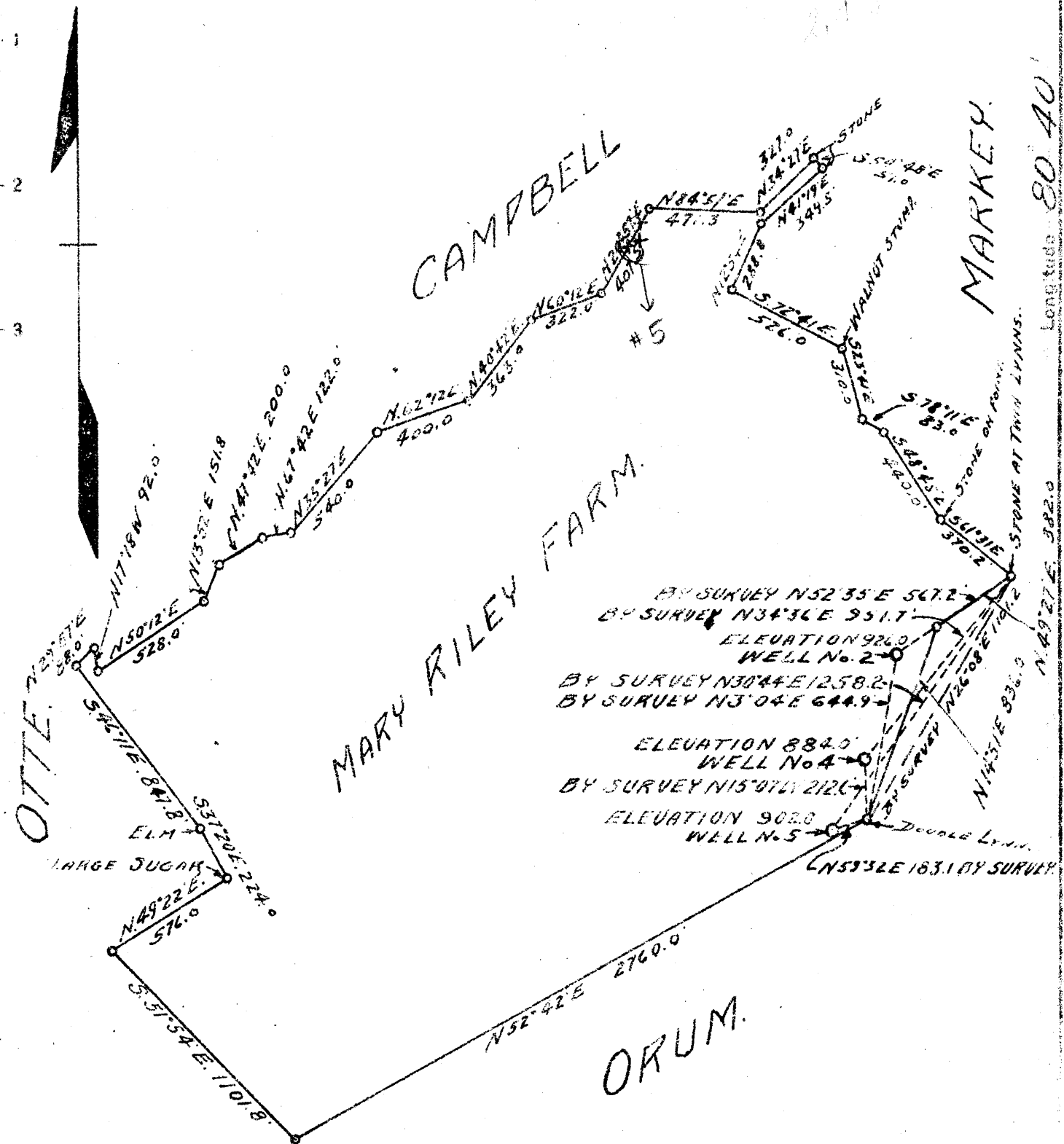


Latitude 40 00

Longitude 80 40



New Location
 Drill Deeper
 Abandonment

Company GEO. P. WASMUTH
 Address GLENDALE W. VA.
 Farm MARY RILEY
 Tract 1 Acres 178.98 Lease No. _____
 Well (Farm) No. 2-4-5 Serial No. _____
 Elevation (Spirit Level) 926' - 884' - 902'
 Quadrangle CAMERON
 County MARSHALL District UNION
 Engineer WALTER W. STEGMAN
 Engineer's Registration No. 394
 File No. _____ Drawing No. _____
 Date AUGUST 23, 1945 Scale 1 INCH = 600 FEET

STATE OF WEST VIRGINIA
 DEPARTMENT OF MINES
 OIL AND GAS DIVISION
 CHARLESTON

WELL LOCATION MAP
 FILE NO. MARS-229-A-#5

+ Denotes location of well on United States Topographic Maps, scale 1 to 62,500, latitude and longitude lines being represented by border lines as shown.

- Denotes one inch spaces on border line of original tracing



272

STATE OF WEST VIRGINIA
DEPARTMENT OF MINES
OIL AND GAS DIVISION

WELL RECORD

Permit No. 229-A

Oil or Gas Well _____ (KIND)

Company Geo. P. Wasmuth
 Address Glen Dale, W. Va.
 Farm Mary Riley Acres 179
 Location (waters) Little Grave Creek
 Well No. 5 Elev. 902
 District Union County Marshall
 The surface of tract is owned in fee by Mary Riley Heirs
 Address McMechen, W. Va.
 Mineral rights are owned by same
 Address same
 Drilling commenced 1925
 Drilling completed 1925
 Date Shot _____ From _____ To _____
 With _____
 Open Flow _____ /10ths Water in _____ Inch
 _____ /10ths Merc. in _____ Inch
 Volume _____ Cu. Ft.
 Rock Pressure _____ lbs. _____ hrs.
 Oil 5 _____ bbls., 1st 24 hrs.
 Fresh water _____ feet _____ feet
 Salt water _____ feet _____ feet

| Casing and Tubing | Used in Drilling | Left in Well | Packers |
|-------------------|------------------|--------------|----------------|
| Size | | | |
| 16 | | | Kind of Packer |
| 13 | | | |
| 10 | | 30 | Size of |
| 8 1/4 | | 385 | |
| 6 1/2 | | 980 | Depth set |
| 5 3/16 | | 1410 | |
| 3 | | | Perf. top |
| 2 | | 1501 | Perf. bottom |
| Liners Used | | | Perf. top |
| | | | Perf. bottom |

CASING CEMENTED _____ SIZE _____ No. Ft. _____ Date _____
 COAL WAS ENCOUNTERED AT **380** FEET _____ INCHES
 _____ FEET _____ INCHES _____ FEET _____ INCHES
 _____ FEET _____ INCHES _____ FEET _____ INCHES

| Formation | Color | Hard or Soft | Top | Bottom | Oil, Gas or Water | Depth Found | Remarks |
|-----------------------|-------|--------------|------|--------|-------------------|-------------|---------|
| Big Injun | | hard | 1477 | 1494 | Oil | 1490 | |
| Salt Sand (Estimated) | | | 1087 | 1292 | | | |