

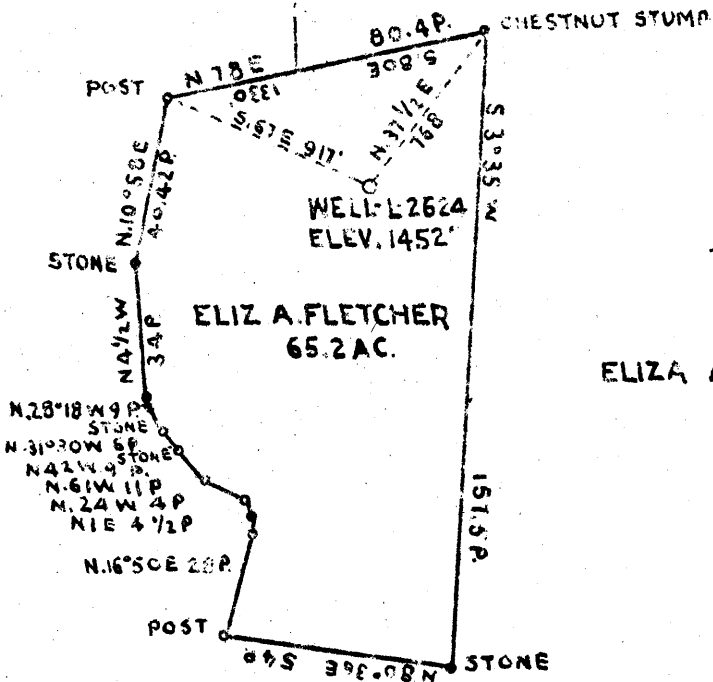
5.12

1.82

JOSEPH PHILLIPPI

J.C. LOUGH

FRANK FLETCHER



ELIZ A. FLETCHER  
65.2 AC.

ELIZA A. FLETCHER

LLOYD STROPE

+ 5.15  
1.82W

COAL OWNED BY T. L. ROGERSON - MOUNDSVILLE W.VA.

NEW LOCATION

DRILL DEEPER

ABANDONMENT

COMPANY THE MANUFACTURERS LIGHT AND HEAT CO.

ADDRESS 800 UNION TRUST BLDG PITTSBURGH PA.

FARM THOMAS F. AND ELIZA A. FLETCHER

TRACT \_\_\_\_\_ ACRES 65.2 LEASE NO. 7482

WELL (FARM) NO. 1 SERIAL NO. 2624

ELEVATION (SPIRIT LEVEL) 1452'

QUADRANGLE CAMERON SE 1/4 EC

COUNTY MARSHALL DISTRICT CAMERON

ENGINEER *J. C. Lough*

ENGINEER'S REGISTRATION NO. \_\_\_\_\_

FILE NO. WELL BK. 28 P. 61 DRAWING NO. Y-11-176

DATE AUGUST 22 1945 SCALE 1" = 800'

STATE OF WEST VIRGINIA  
DEPARTMENT OF MINES  
OIL AND GAS DIVISION  
CHARLESTON

WELL LOCATION MAP  
FILE NO. MARS-227-A

+ DENOTES LOCATION OF WELL ON UNITED STATES TOPOGRAPHIC MAPS, SCALE 1 TO 62,500, LATITUDE AND LONGITUDE LINES BEING REPRESENTED BY BORDER LINES AS SHOWN.

-- DENOTES ONE INCH SPACES IN BORDER LINE OF ORIGINAL TRACING.



STATE OF WEST VIRGINIA  
DEPARTMENT OF MINES  
OIL AND GAS DIVISION

272

WELL RECORD

Permit No. 11315-227 A  
Drilled in 1920

Oil or Gas Well Gas  
(KIND)

Company The Manufacturers Light & Heat Company  
Address 800 Union Trust Bldg., Pittsburgh, Pa.  
Farm Thomas Fletcher Acres 65  
Location (waters) \_\_\_\_\_  
Well No. 2624 Elev. 1152 ft.  
District Cameron County Marshall  
The surface of tract is owned in fee by Harry E. Fletcher  
Address Cameron, W. Va.  
Mineral rights are owned by The Mfrs. L. & H. Co.  
800 Union Trust Bldg., Pittsburgh, Pa.  
Drilling commenced 9/22/20 9/28/29  
Drilling completed 10/25/20 10/15/29  
Date Shot \_\_\_\_\_ From \_\_\_\_\_ To \_\_\_\_\_  
With \_\_\_\_\_

Casing and Tubing	Used in Drilling	Left in Well	Packers
Size			
16			Kind of Packer
18			<u>Spang Anchor</u>
10	<u>150'</u>	<u>150'</u>	Size of
8 1/4	<u>1380'</u>	<u>1380'</u>	<u>8 1/4 x 1 1/4</u>
6 3/8	<u>2097'</u>	<u>2097'</u>	Depth set
5 3/16			<u>2976</u>
4 1/2	<u>3257'</u>	<u>3257'</u>	Perf. top
2			Perf. bottom
Liners Used			Perf. top
			Perf. bottom

Open Flow \_\_\_\_\_ /10ths Water in \_\_\_\_\_ Inch  
2 /10ths Merc. in \_\_\_\_\_ 8 1/4 Inch  
Volume \_\_\_\_\_ Cu. Ft.  
Rock Pressure 100 lbs. \_\_\_\_\_ hrs.  
Oil \_\_\_\_\_ bbls., 1st 24 hrs.  
Fresh water 200 feet \_\_\_\_\_ feet  
Salt water \_\_\_\_\_ feet \_\_\_\_\_ feet

CASING CEMENTED \_\_\_\_\_ SIZE \_\_\_\_\_ No. Ft. \_\_\_\_\_ Date \_\_\_\_\_

COAL WAS ENCOUNTERED AT 710 FEET 60 INCHES  
965 FEET 60 INCHES FEET INCHES  
FEET INCHES FEET INCHES

Formation	Color	Hard or Soft	Top	Bottom	Oil, Gas or Water	Depth Found	Remarks
Waynesburg Coal			710	715			
Pittsburgh Coal			965	970			
Red Rock			1000	1010			
Lime			1220	1260			
Red Rock			1330	1345			
Little Dunkard			1380	1420			
Big Dunkard			1460	1504			
Sand			1538	1560			
Gas Sand			1625	1680			
Sand			1730	1775			
Salt Sand			1810	1845			
Maxon Sand			1975	2014	<u>Gas 2004-2013</u>		
DRILLED DEEPER							
Maxon Sand			2014	2020			
Slate & Lime			2020	2078			
Big Lime			2078	2128			
Big Injun			2128	2355			
Slate & Shells			2355	2500			
Lime & Slate			2500	2879			
50-Foot Sand			2879	2899			
Slate & Shells			2899	2966			
Gordon Sand			2966	3004	<u>Gas at 2998 ft.</u>		
Slate			3004	3059			
1/4th Sand			3059	3065	<u>Gas at 3061 ft. - Pay</u>		
Slate & Shells			3065	3226 1/2			
Total depth				3226 1/2			



