

39 + 50
0.228
1.38W

GEORGE FLETCHER

LLOYD STROPE

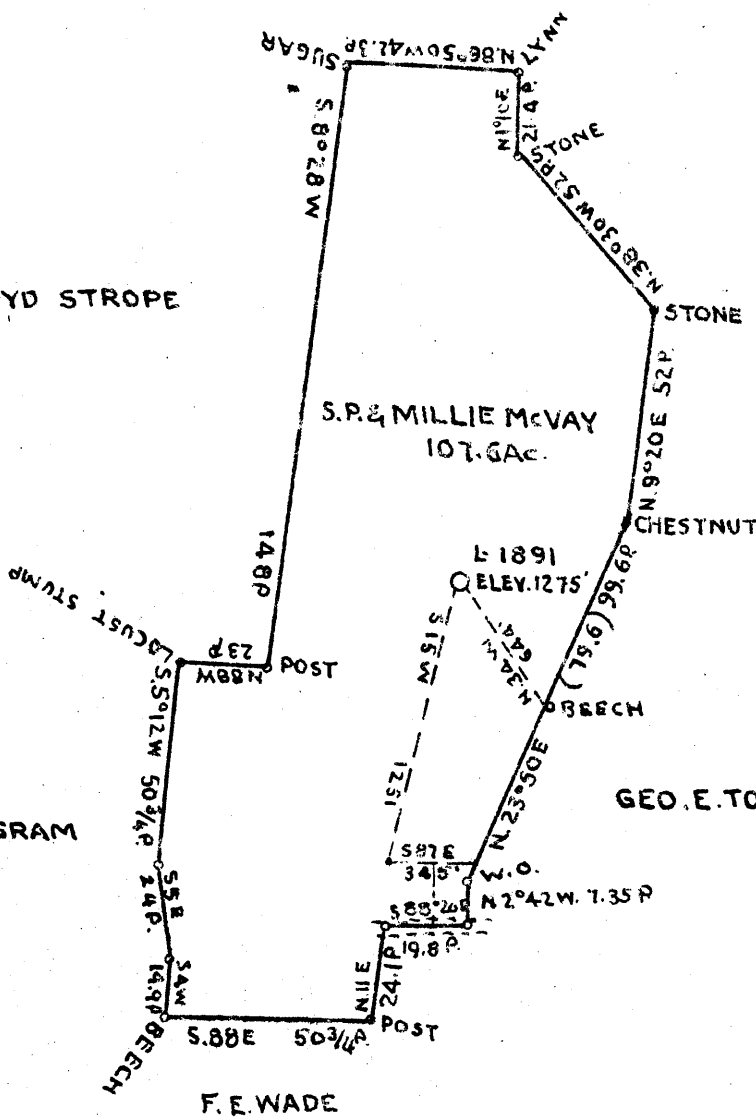
OLIVE INGRAM

S.P. & MILLIE McVAY
107.6 AC.

OLIVE INGRAM

GEO. E. TODD

F. E. WADE



COAL OWNED BY T. L. ROGERSON

NEW LOCATION
 DRILL DEEPER
 ABANDONMENT

COMPANY THE MANUFACTURERS LIGHT & HEAT CO
 ADDRESS 800 UNION TRUST BLDG. PITTSBURGH PA.
 FARM S. P. & MILLIE McVAY
 TRACT _____ ACRES 107.6 LEASE NO. 2097
 WELL (FARM) NO. 1 SERIAL NO. 1891
 ELEVATION (SPIRIT LEVEL) 1275'
 QUADRANGLE CAMERON SE
 COUNTY MARSHALL DISTRICT CAMERON
 ENGINEER J. L. ...
 ENGINEER'S REGISTRATION NO. _____
 FILE NO. _____ DRAWING NO. Y-11-140
 DATE MAY - 21 - 1945 SCALE 1" = 800'

STATE OF WEST VIRGINIA
 DEPARTMENT OF MINES
 OIL AND GAS DIVISION,
 CHARLESTON

WELL LOCATION MAP

FILE NO. MARS - 222 - A

... DENOTES LOCATION OF WELL ON UNITED STATES TOPOGRAPHIC MAPS SCALE 1 TO 62,500. LATITUDE AND LONGITUDE LINES BEING REPRESENTED BY BORDER LINES AS SHOWN.

... OF ONE INCH SPACES ON BORDER LINE OF ORIGINAL ...



STATE OF WEST VIRGINIA
DEPARTMENT OF MINES
OIL AND GAS DIVISION

265

WELL RECORD

Permit No. Drilled in 1916

Oil or Gas Well Gas
(KIND)

Company The Manufacturers Light & Heat Company
Address 800 Union Trust Bldg., Pittsburgh, Pa.
Farm S. P. McVay Acres 108
Location (waters) _____
Well No. 1 - 1891 Elev. 1275 ft.
District Cameron County Marshall
The surface of tract is owned in fee by Glenn B. McVay
Address Cameron, W. Va.
Mineral rights are owned by The M L & H Company
800 Union Trust Bldg Address Pittsburgh, Pa.
Drilling commenced 1/24/16
Drilling completed 3/15/16
Date Shot 3/16/16 From 2871 To 2880
With 40 qts.
Open Flow 30/10ths Water in 2 Inch
/10ths Merc. in _____ Inch
Volume _____ Cu. Ft.
Rock Pressure _____ lbs. _____ hrs.
Oil _____ bbls., 1st 24 hrs.
Fresh water _____ feet _____ feet
Salt water _____ feet _____ feet

Casing and Tubing	Used in Drilling	Left in Well	Packers
Size			
16			Kind of Packer
18			
10	1726	-	Size of
8 1/2	1251	-	
6	2026	2026	Depth set
5 3/16			
3			Perf. top
2			Perf. bottom
Liners Used			Perf. top
			Perf. bottom

CASING CEMENTED _____ SIZE _____ No. Ft. _____ Date _____
COAL WAS ENCOUNTERED AT 590 FEET 60 INCHES
760 FEET 36 INCHES 865 FEET 96 INCHES
_____ FEET _____ INCHES _____ FEET _____ INCHES

Formation	Color	Hard or Soft	Top	Bottom	Oil, Gas or Water	Depth Found	Remarks
Slate & Lime			0	590			
Waynesburg Coal			590	595			
Slate & Lime			595	760			
Mapletown Coal			760	763			
Slate & Lime			763	865			
Pittsburgh Coal			865	873	Show of gas		
Slate & Lime			873	996			
Red Rock			996	1035			
Lime			1035	1055			
Red Rock			1055	1090			
Lime			1090	1105			
Red Rock			1105	1168			
Lime			1168	1200			
Red Rock			1200	1230			
Lime			1230	1250			
Red Rock			1250	1257			
Lime			1257	1265			
Little Dunkard			1265	1320			
Slate & Lime			1320	1340			
Big Dunkard			1340	1410			
Slate & Lime			1410	1545			
Gas Sand			1545	1585			
Slate & Lime			1585	1635			
1st Salt Sand			1635	1670	Small show of gas at 1669		
Slate & Lime			1670	1805			
2nd Salt Sand			1805	1825			
Slate & Lime			1825	1935			
Maxon Sand			1935	1960			
Pencil Cave			1960	1965			
Little Lime			1965	1990			
Pencil Cave			1990	1993			
Big Lime			1993	2050			
Big Injun			2050	2290			
Slate & Lime			2290	2630			
30-Foot Sand			2630	2665			
Slate & Lime			2665	2818			
50-Foot Sand			2818	2855			
Stray Sand			2855	2865			

Formation	Color	Hard or Soft	Top	Bottom	Oil, Gas or Water	Depth Found	Remarks
Slate			2865	2870			
Gordon			2870	2910	Gas at 2871		
Slate			2910	2950			
Line Shells			2950	2958			
Slate & Lime			2958	3025			
Total depth				3025			

Date May 17th, 1945

APPROVED THE MANUFACTURERS LIGHT & HEAT COMPANY, Owner

By Harry H. Fowler
Land Dept. (Title) Office Manager.