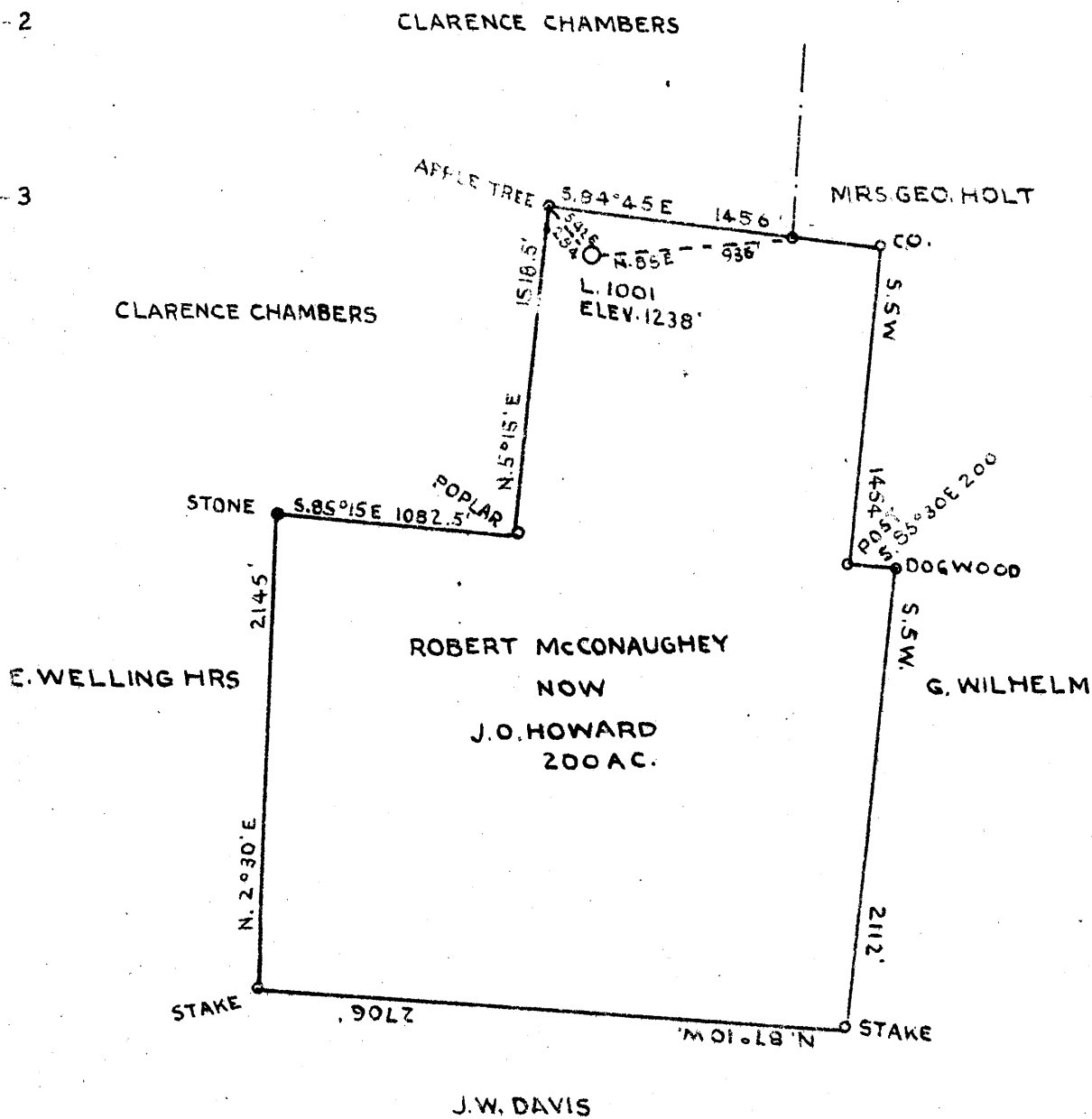


2162
.25

35
+ 80



COAL OWNED BY STATE OF WEST VIRGINIA

- NEW LOCATION
- WELL DEEPER
- REVISIONMENT

COMPANY THE MANUFACTURERS LIGHT & HEAT CO.
 ADDRESS 800 UNION TRUST BLD'G. PITTSBURGH, PA.
 FARM ROBERT McCONAUGHEY
 TRACT ACRES 200 LEASE NO 2871
 WELL (FARM) NO. 1 SERIAL NO. 1001
 ELEVATION (SPIRIT LEVEL) 1238'
 QUADRANGLE CAMERON
 COUNTY MARSHALL DISTRICT LIBERTY
 ENGINEER *J. L. ...*
 ENGINEER'S REGISTRATION NO. ...
 FILE NO. DRAWING NO. 113
 DATE FEB. 15 1945 SCALE 1" = 800'

STATE OF WEST VIRGINIA
 DEPARTMENT OF MINES
 OIL AND GAS DIVISION
 CHARLESTON

WELL LOCATION MAP

FILE NO. MARS-216-A

○ DENOTES LOCATION OF WELL ON UNITED STATES TOPOGRAPHIC MAPS. SCALE 1 TO 62,500 LATITUDE AND LONGITUDE LINES BEING REPRESENTED BY BORDER LINES AS SHOWN

○ DENOTES ONE INCH SPACES ON BORDER LINE OF ORIGINAL PLACING.

R. A. MCGONAGHEY - 211 No. 1-1001

Liberty District, Marshall County, West Virginia.

By The Manufacturers Light & Heat Company, 800 Union Trust Bldg., Pittsburgh, Pennsylvania.

Drilled under Permit No. 216-A drilled in 1909.

On 200 acres.

lev. 1238 feet.

Surface tract owned in fee by R. A. & Sidney McGonaghey, Cameron, West Va.

Mineral rights owned by The M. L. & H. Co. 800 Union Trust Bldg., Pitt., Pa.

Drilling commenced February 10, 1909, completed April 13, 1909.

Shot May 24, 1909 with 80 qts.

Casing 10" - 385; 8" - 1325; & 5/8" - 2045 all left in.

Coal was encountered 869 and 949 feet.

Completion reported to Dept. of Mines February 20, 1945. Gas well.

Record to RCE from Mrs. Griffith May 25, 1945. Old File No. 257.

	TOP	BOTTOM
Mapletown Coal	864	869
Pittsburgh Coal	944	949
Big Dunkard Sand	1415	1475
Gas Sand	1580	1640 Little water
Salt Sand	1760	1780
Salt Sand Maxon sand <i>Salt</i>	1985	2007 About gas enough to
Maxon Sand Big lime	2045	2069 run two drilling
Big Injun	2089	2354 Little well.
Red Rock	2780	gas at 97 ft, in sand 2860 Gordon Stray 2800 (Little Gas)
Gordon Sand	2941	2969 Very small show of oil 2952-2957
Sand Shell	3029	3035
Slate & Shells	3035	3602
Lime Shells	3602	3609 Speckly sand - no oil or gas
Total Depth		3705

R. A. McCONAUGHEY NO. 1001 WELL.

Liberty District, Marshall County, W. Va.

By Manufacturers Light & Heat Co.

Completed April 13., 1909.

Record from Mr. Schillhahn Sept. 30, 1939.

	Top.	Bottom.
Pittsburgh Coal	944	- 949
Big Dunkard Sand	1415	- 1475
Gas Sand (little water)	1580	- 1640
Marston Sand	1985	- 2007
Big Lime	2045	- 2089
Big Injun Sand (little gas at 97')	2089	- 2354
Gordon Sand (small show, 2952-2957')	2941	- 2969
Total depth		3705



257

STATE OF WEST VIRGINIA
DEPARTMENT OF MINES
OIL AND GAS DIVISION

216A

WELL RECORD

Permit No. Drilled in 1909

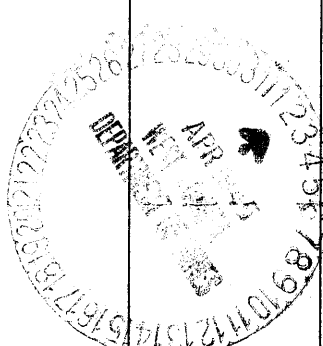
Oil or Gas Well Gas

Company The Manufacturers Light & Heat Company
Address 800 Union Trust Bldg., Pittsburgh, Pa.
Farm R. A. McConaughy Acres 200
Location (waters) _____
Well No. 1 - 1001 Elev. 1238 ft.
District Liberty County Marshall
The surface of tract is owned in fee by R A & Sidney McCon-
aughy Address Cameron, W. Va.
Mineral rights are owned by The M L & H Co
800 Union Trust Bldg. Address Pittsburgh, Pa.
Drilling commenced 2/10/09
Drilling completed 4/13/09
Date Shot 5/24/09 From ? To ?
With 80 Qts
Open Flow /10ths Water in _____ Inch
/10ths Merc. in _____ Inch
Volume _____ Cu. Ft.
Rock Pressure _____ lbs. _____ hrs.
Oil _____ bbls., 1st 24 hrs.
Fresh water _____ feet _____ feet
Salt water _____ feet _____ feet

Casing and Tubing	Used in Drilling	Left in Well	Packers
Size			
16			Kind of Packer
18			
10	385'	-	Size of
8 1/2	1325'	1325'	
6 1/2	2045'	2045'	Depth set
5 3/16			
3			Perf. top
2			Perf. bottom
Liners Used			Perf. top
			Perf. bottom

CASING CEMENTED _____ SIZE _____ No. Ft. _____ Date _____
COAL WAS ENCOUNTERED AT 864 FEET 60 INCHES
944 FEET 60 INCHES _____ FEET _____ INCHES
_____ FEET _____ INCHES _____ FEET _____ INCHES

Formation	Color	Hard or Soft	Top	Bottom	Oil, Gas or Water	Depth Found	Remarks
Mapletown Coal			864	869			
Pittsburgh Coal			944	949			
Big Dunkard Sand			1415	1475			
Gas Sand			1580	1640	Little water		
Salt Sand			1760	1780			
Maxon Sand			1985	2007	About gas enough to run two drilling wells		
Big Lime			2045	2089			
Big Injun			2089	2354	Little gas at 97 ft in sand		
Red Rock			2780	2860	Gordon Stray 2800 (Little gas)		
Gordon Sand			2941	2969	Very small show of oil	2952-2957	
Sand Shell			3029	3035			
Slate & Shells			3035	3602			
Lime Shells			3602	3609	Speechley Sand - no oil or gas		
Total depth				3705			



3609
2969
240

Formation	Color	Hard or Soft	Top	Bottom	Oil, Gas or Water	Depth Found	Remarks

Date February 20th, 1945

APPROVED THE MANUFACTURERS LIGHT & HEAT CO., Owner

By Harry H. Fowler
Land Dept. (Title) Office Manager