

1

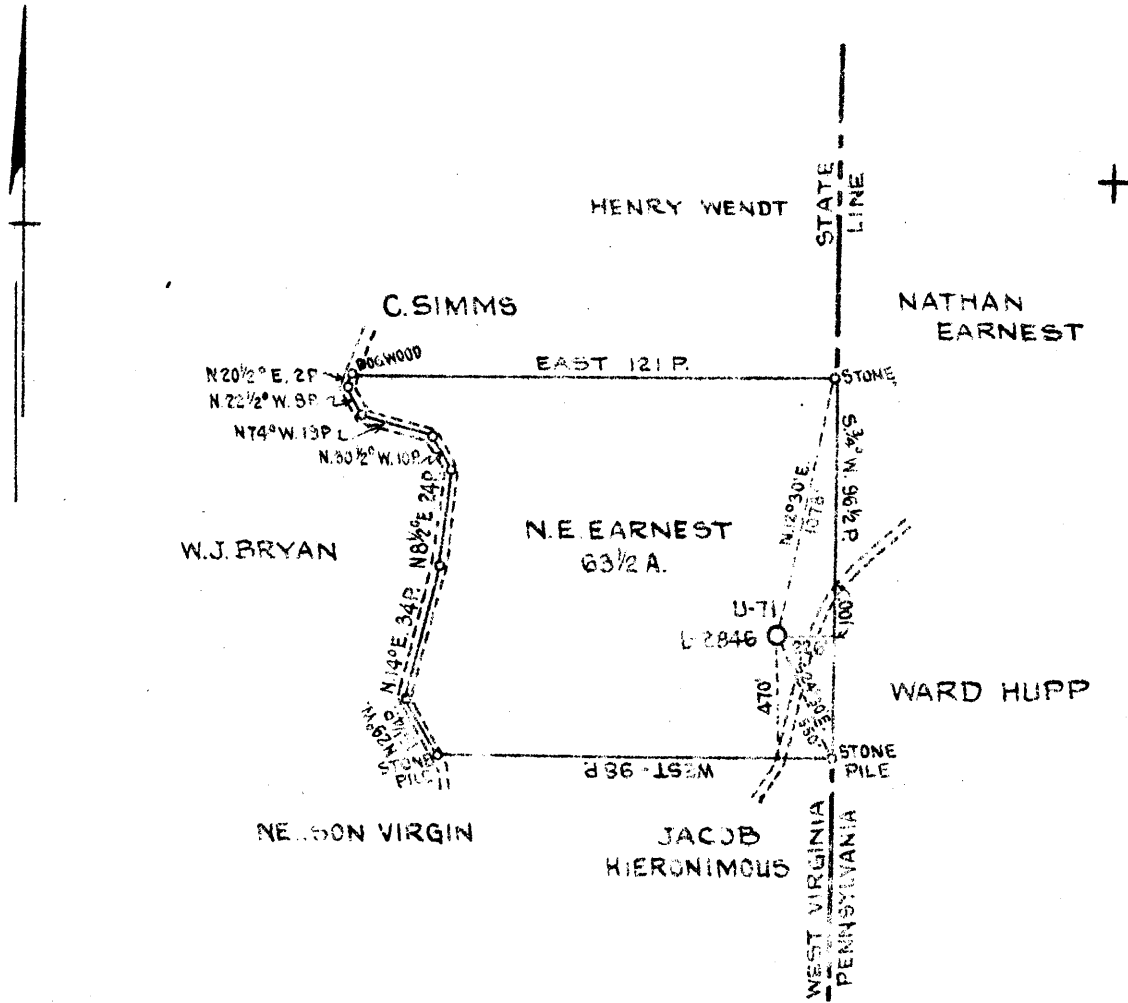
2

3

LATITUDE 39 ° 30'

S. 27  
1.1 W

80 ° 30'



LAND OWNED BY STATE OF WEST VIRGINIA

- BY LOCATION
- WELL DEEPER
- PROPERTY

COMPANY NATIONAL SUPPLY COMPANY  
 ADDRESS LOGAN, OHIO  
 NAME N. E. EARNEST  
 ACRES 1 63 1/2 A. LEASE NO. 2228  
 WELL (FARM) NO. 2 SERIAL NO. U71-L2846  
 ELEVATION (SPIRIT LEVEL) 1068'  
 QUADRANGLE CAMERON S.E. 1/4 QUADRANGLE  
 COUNTY MARSHALL DISTRICT LIBERTY  
 ENGINEER W. E. Kaye  
 ENGINEER'S REGISTRATION NO. \_\_\_\_\_  
 FILE NO. \_\_\_\_\_ DRAWING NO. Y-11-13  
 DATE MARCH 16, 1944 SCALE 1" = 800'

STATE OF WEST VIRGINIA  
 DEPARTMENT OF MINES  
 OIL AND GAS DIVISION  
 CHARLESTON

WELL LOCATION MAP

FILE NO. MARS-205-A

+ DENOTES LOCATION OF WELL ON UNITED STATES TOPOGRAPHIC MAPS SCALE 1 TO 62 500. LATITUDE AND LONGITUDE LINES BEING REPRESENTED BY BORDER LINES AS SHOWN.

○ DENOTES ONE INCH SPACES ON BORDER LINE OF ORIGINAL TRACING



252

STATE OF WEST VIRGINIA  
DEPARTMENT OF MINES  
OIL AND GAS DIVISION

WELL RECORD

Permit No. 2057 Oil or Gas Well Oil  
(KIND)

Company National Supply Company  
 Address Logan, Ohio  
 Farm N. E. Earnest Acres 63 1/2  
 Location (waters) \_\_\_\_\_  
 Well No. 2 - U-71 Elev. 1068 ft.  
 District Liberty County Marshall  
 The surface of tract is owned in fee by Nathan E. Earnest  
 Address Woodruff, W. Va.  
 Mineral rights are owned by National Supply Company  
 Address Logan, Ohio  
 Drilling commenced 8/11/23  
 Drilling completed 9/29/23  
 Date Shot \_\_\_\_\_ From \_\_\_\_\_ To \_\_\_\_\_  
 With \_\_\_\_\_

| Casing and Tubing | Used in Drilling | Left in Well | Packers        |
|-------------------|------------------|--------------|----------------|
| Size              |                  |              |                |
| 16                |                  |              | Kind of Packer |
| 18                |                  |              |                |
| 10                | 208' 10"         |              | Size of        |
| 8 1/4             | 1218' 8"         | 1218' 8"     |                |
| 6 1/2             | 1920'            | 1920'        | Depth set      |
| 5 3/16            |                  |              |                |
| 3                 |                  |              | Perf. top      |
| 2                 |                  |              | Perf. bottom   |
| Liners Used       |                  |              | Perf. top      |
|                   |                  |              | Perf. bottom   |

Open Flow \_\_\_\_\_ /10ths Water in \_\_\_\_\_ Inch  
 \_\_\_\_\_ /10ths Merc. in \_\_\_\_\_ Inch  
 Volume \_\_\_\_\_ Cu. Ft.  
 Rock Pressure \_\_\_\_\_ lbs. \_\_\_\_\_ hrs.  
 Oil \_\_\_\_\_ bbls., 1st 24 hrs.  
 Fresh water \_\_\_\_\_ feet \_\_\_\_\_ feet  
 Salt water \_\_\_\_\_ feet \_\_\_\_\_ feet

CASING CEMENTED \_\_\_\_\_ SIZE \_\_\_\_\_ No. Ft. \_\_\_\_\_ Date \_\_\_\_\_  
 COAL WAS ENCOUNTERED AT 768 FEET 72 INCHES  
 \_\_\_\_\_ FEET \_\_\_\_\_ INCHES \_\_\_\_\_ FEET \_\_\_\_\_ INCHES  
 \_\_\_\_\_ FEET \_\_\_\_\_ INCHES \_\_\_\_\_ FEET \_\_\_\_\_ INCHES

| Formation          | Color | Hard or Soft | Top  | Bottom | Oil, Gas or Water | Depth Found | Remarks |
|--------------------|-------|--------------|------|--------|-------------------|-------------|---------|
| Sand, Lime, Slate, |       |              | 0    | 60     |                   |             |         |
| Lime               |       |              | 60   | 120    |                   |             |         |
| Red Rock           |       |              | 120  | 125    |                   |             |         |
| Lime & Slate       |       |              | 125  | 310    |                   |             |         |
| Coal               |       |              | 310  | 315    |                   |             |         |
| Slate              |       |              | 315  | 330    |                   |             |         |
| Coal               |       |              | 330  | 334    |                   |             |         |
| Slate & Lime       |       |              | 334  | 475    |                   |             |         |
| Lime & Slate       |       |              | 475  | 568    |                   |             |         |
| Coal               |       |              | 568  | 572    |                   |             |         |
| Lime               |       |              | 572  | 668    |                   |             |         |
| Mayflower Coal     |       |              | 668  | 672    |                   |             |         |
| Lime               |       |              | 672  | 750    |                   |             |         |
| Slate & Lime       |       |              | 750  | 800    |                   |             |         |
| pittsburgh Coal    |       |              | 800  | 865    |                   |             |         |
| Shale              |       | 768-774      | 865  | 900    |                   |             |         |
| Sand               |       |              | 900  | 930    |                   |             |         |
| Red Rock           |       |              | 930  | 960    |                   |             |         |
| Lime & Shale       |       |              | 960  | 985    |                   |             |         |
| Red Rock           |       |              | 985  | 1000   |                   |             |         |
| Murphy Sand        |       |              | 1000 | 1040   |                   |             |         |
| Red Rock           |       |              | 1040 | 1110   |                   |             |         |
| Shale              |       |              | 1110 | 1125   |                   |             |         |
| Sand               |       |              | 1125 | 1155   |                   |             |         |
| Shale              |       |              | 1155 | 1160   |                   |             |         |
| Lime               |       |              | 1160 | 1190   |                   |             |         |
| Red Rock           |       |              | 1190 | 1225   |                   |             |         |
| Little Dunkard     |       |              | 1225 | 1280   |                   |             |         |
| Shale              |       |              | 1280 | 1330   |                   |             |         |
| Big Dunkard        |       |              | 1330 | 1370   |                   |             |         |
| Shale              |       |              | 1370 | 1400   |                   |             |         |
| Sand               |       |              | 1400 | 1420   |                   |             |         |
| Shale              |       |              | 1420 | 1440   |                   |             |         |
| Gas Sand           |       |              | 1440 | 1480   |                   |             |         |
| Shale dark         |       |              | 1480 | 1550   |                   |             |         |
| Shale blue         |       |              | 1550 | 1625   |                   |             |         |
| Salt Sand          |       |              | 1625 | 1700   |                   |             |         |
| Shale              |       |              | 1700 |        |                   |             |         |

*This according to all other records we have is termed a "fasted seam" need not be cemented.*

MAR 1944  
 DEPT. OF MINES  
 STATE OF WEST VIRGINIA

| Formation      | Color | Hard or Soft | Top  | Bottom | Oil, Gas or Water | Depth Found | Remarks |
|----------------|-------|--------------|------|--------|-------------------|-------------|---------|
| Sand           |       |              | 1700 | 1820   |                   |             |         |
| Slate & Shells |       |              | 1820 | 1885   |                   |             |         |
| Lime           |       |              | 1880 | 1900   |                   |             |         |
| Pencil Cave    |       |              | 1885 | 1960   |                   |             |         |
| Big Lime       |       |              | 1900 | 2228   |                   |             |         |
| Big Injun      |       |              | 1960 | 2240   |                   |             |         |
| Slate          |       |              | 2228 | 2285   |                   |             |         |
| Squaw Sand     |       |              | 2240 | 2390   |                   |             |         |
| Slate & Shells |       |              | 2285 | 2400   |                   |             |         |
| Sand           |       |              | 2390 | 2555   |                   |             |         |
| Slate & Shells |       |              | 2400 | 2593   |                   |             |         |
| 30-Foot Sand   |       |              | 2555 | 2700   |                   |             |         |
| Slate & Shells |       |              | 2593 | 2760   |                   |             |         |
| Slate          |       |              | 2700 | 2800   |                   |             |         |
| 50-Foot Sand   |       |              | 2760 | 2810   |                   |             |         |
| Slate          |       |              | 2800 | 2825   |                   |             |         |
| Gordon Stray   |       |              | 2810 | 2830   |                   |             |         |
| Slate          |       |              | 2825 | 2868   |                   |             |         |
| Gordon Sand    |       |              | 2830 | 2892   |                   |             |         |
| Slate          |       |              | 2868 | 2897   |                   |             |         |
| 4th Sand       |       |              | 2892 | 2897   | Oil               | 2894        | 2896    |
| Total Depth    |       |              |      | 2897   |                   |             |         |

Date \_\_\_\_\_, 194

APPROVED NATIONAL SUPPLY COMPANY, Owner

By [Signature]  
(Title)