

-0 1 2 3 LATITUDE 39 50

-1

-2

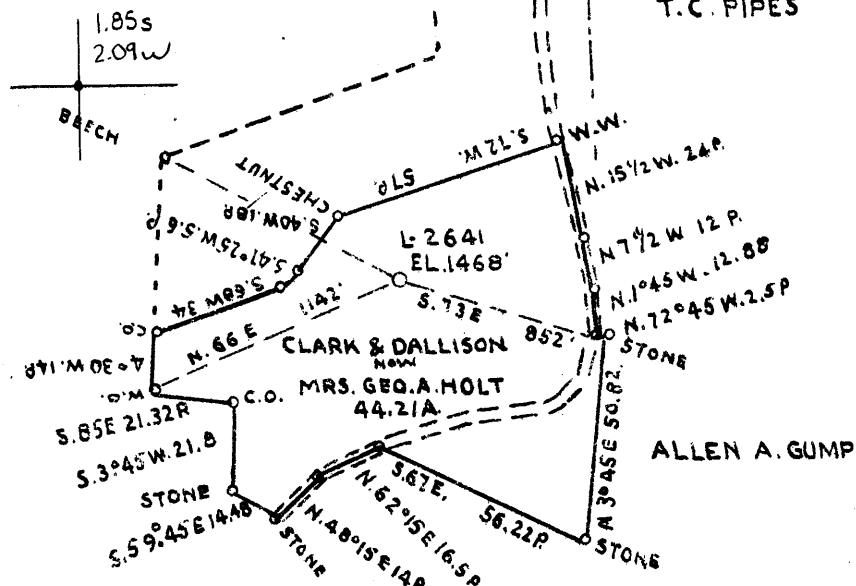
-3

80°32'30"

LONGITUDE 80

CLARENCE CHAMBERS

T.C. PIPES



J.O. HOWARD

CAMERON L. & H. CO.

COAL OWNED BY EARNEST WATSON, MASONTOWN, PRESTON CO. W. VA.

NEW LOCATION

DRILL DEEPER

ABANDONMENT

COMPANY THE MANUFACTURERS LIGHT AND HEAT CO.

ADDRESS 800 UNION TRUST BLD'G. PITTSBURGH PA.

FARM CLARK & DALLISON

TRACT \_\_\_\_\_ ACRES 44.21 LEASE NO. 2297

WELL (FARM) NO. 1 SERIAL NO. 2641

ELEVATION (SPIRIT LEVEL) 1468'

QUADRANGLE CAMERON

COUNTY MARSHALL DISTRICT LIBERTY

ENGINEER *John M. ...*

ENGINEER'S REGISTRATION NO. \_\_\_\_\_

FILE NO. \_\_\_\_\_ DRAWING NO. Y-10-993

DATE JANUARY 18 1944 SCALE 1" = 800'

STATE OF WEST VIRGINIA  
DEPARTMENT OF MINES  
OIL AND GAS DIVISION  
CHARLESTON

WELL LOCATION MAP

FILE NO. MARS-202-A

+ DENOTES LOCATION OF WELL ON UNITED STATES TOPOGRAPHIC MAPS. SCALE 1 TO 62,500. LATITUDE AND LONGITUDE LINES BEING REPRESENTED BY BORDER LINES AS SHOWN.

— DENOTES ONE INCH SPACES ON BORDER LINE OF ORIGINAL TRACING.

106

(023)

JOHN CLARK NO. 2641 WELL.

Liberty District, Marshall County, W. Va.  
By Manufacturers Light & Heat Co.  
Completed March 1, 1921.  
Record from Mr. Schillham Sept. 30, 1939.

	Top.	Bottom.
Pittsburgh Coal	1048	- 1055
Salt Sand	2030	- 2100
Maxton Sand	2120	- 2135
Big Lime	2165	- 2215
Big Injun Sand	2215	- 2465
30-Foot? Sand	2720	- 2740
50-Foot Sand (sh. gas, 2989')	2986	- 2995
Gordon Stray Sand	3015	- 3035
Gordon Sand	3055	- 3080
4th Sand	3100	- 3105
5th Sand (gas, 3126')	3124	- 3130
Total depth		3133



240

STATE OF WEST VIRGINIA  
DEPARTMENT OF MINES  
OIL AND GAS DIVISION

WELL RECORD

Permit No. 202-A

Oil or Gas Well Gas  
(KIND)

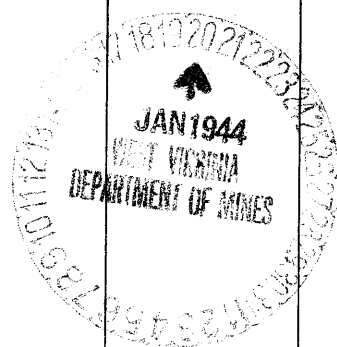
Company The Manufacturers Light & Heat Company  
Address 800 Union Trust Bldg., Pittsburgh, Pa.  
Farm Clark & Dallison Acres 50  
Location (waters) \_\_\_\_\_  
Well No. 1 - 2641 Elev. 1468 ft.  
District Liberty County Marshall  
The surface of tract is owned in fee by Robert Bussard  
R. D. 5 Address Cameron, WVa.  
Mineral rights are owned by The Mfrs Light & Heat Co.  
800 Union Trust Bldg. Address Pittsburgh, Pa.  
Drilling commenced 1/10/21  
Drilling completed 3/1/21  
Date Shot \_\_\_\_\_ From \_\_\_\_\_ To \_\_\_\_\_  
With \_\_\_\_\_

Casing and Tubing	Used in Drilling	Left in Well	Packers
Size			
16			Kind of Packer
18			<u>Anchor OWS</u>
10	<u>280'</u>		Size of
8 1/4	<u>1535'</u>	<u>1535'</u>	<u>6 5/8 x 4</u>
6 3/4	<u>2179'</u>	<u>2179'</u>	Depth set
5 3/16			<u>2619' 3"</u>
3			Perf. top
2			Perf. bottom
Liners Used			Perf. top
			Perf. bottom

Open Flow 20/10ths Water in 6 5/8" Inch  
\_\_\_\_\_ /10ths Merc. in \_\_\_\_\_ Inch  
Volume \_\_\_\_\_ Cu. Ft.  
Rock Pressure 190 lbs. 4 hrs.  
Oil \_\_\_\_\_ bbls., 1st 24 hrs.  
Fresh water \_\_\_\_\_ feet \_\_\_\_\_ feet  
Salt water \_\_\_\_\_ feet \_\_\_\_\_ feet

CASING CEMENTED \_\_\_\_\_ SIZE \_\_\_\_\_ No. Ft. \_\_\_\_\_ Date \_\_\_\_\_  
COAL WAS ENCOUNTERED AT 955 FEET 60 INCHES  
1048 FEET 84 INCHES FEET INCHES  
FEET INCHES FEET INCHES

Formation	Color	Hard or Soft	Top	Bottom	Oil, Gas or Water	Depth Found	Remarks
Clay & Slate			0	75			
Lime			75	160			
Slate			160	400			
Lime			400	425			
Slate			425	700			
Sand			700	765			
Slate			765	850			
Lime			850	955			
Mapletown Coal			955	960			
Lime			960	1000			
Slate			1000	1048			
Pittsburgh Coal			1048	1055			
Lime			1055	1100			
Slate			1100	1200			
Sand			1200	1250			
Red Rock			1250	1300			
Sand			1300	1325			
Red Rock			1325	1350			
Slate			1350	1425			
Red Rock			1425	1430			
Sand			1430	1440			
Slate			1440	1500			
Red Rock			1500	1530			
Sand			1530	1588			
Slate			1588	1640			
Lime			1640	1655			
Slate			1655	1700			
Sand			1700	1750			
Slate & Shells			1750	1890			
Sand			1890	1910			
Slate			1910	1930			
Sand			1930	1950			
Slate			1950	2030			
Salt Sand			2030	2100			
Lime & Slate			2100	2180			



30 1944

Formation	Color	Hard or Soft	Top	Bottom	Oil, Gas or Water	Depth Found	Remarks
Maxon Sand			2120	2135			
Slate			2135	2165			
Big Injun	Lime		2165	2215			
Big Injun			2215	2465			
Slate & Shells			2465	2600			
Lime			2600	2640			
Slate			2640	2720			
30-Foot			2720	2740			
Slate			2740	2986			
50-Foot			2986	2995	Show of gas	at 2989	
Slate			2995	3015			
Stray Sand			3015	3035	Gas at	3031	
Slate			3035	3055			
Gordon			3055	3080			
Slate			3080	3100			
4th Sand			3100	3105			
Slate			3105	3124			
5th Sand			3124	3130	Gas	3126'	
Slate			3130	3132			
Total depth				3133			

Date January 19th, 1914

APPROVED THE MANUFACTURERS LIGHT & HEAT CO., Owner

By Harry H. Fowler  
Land Dept. (Title) Office Manager