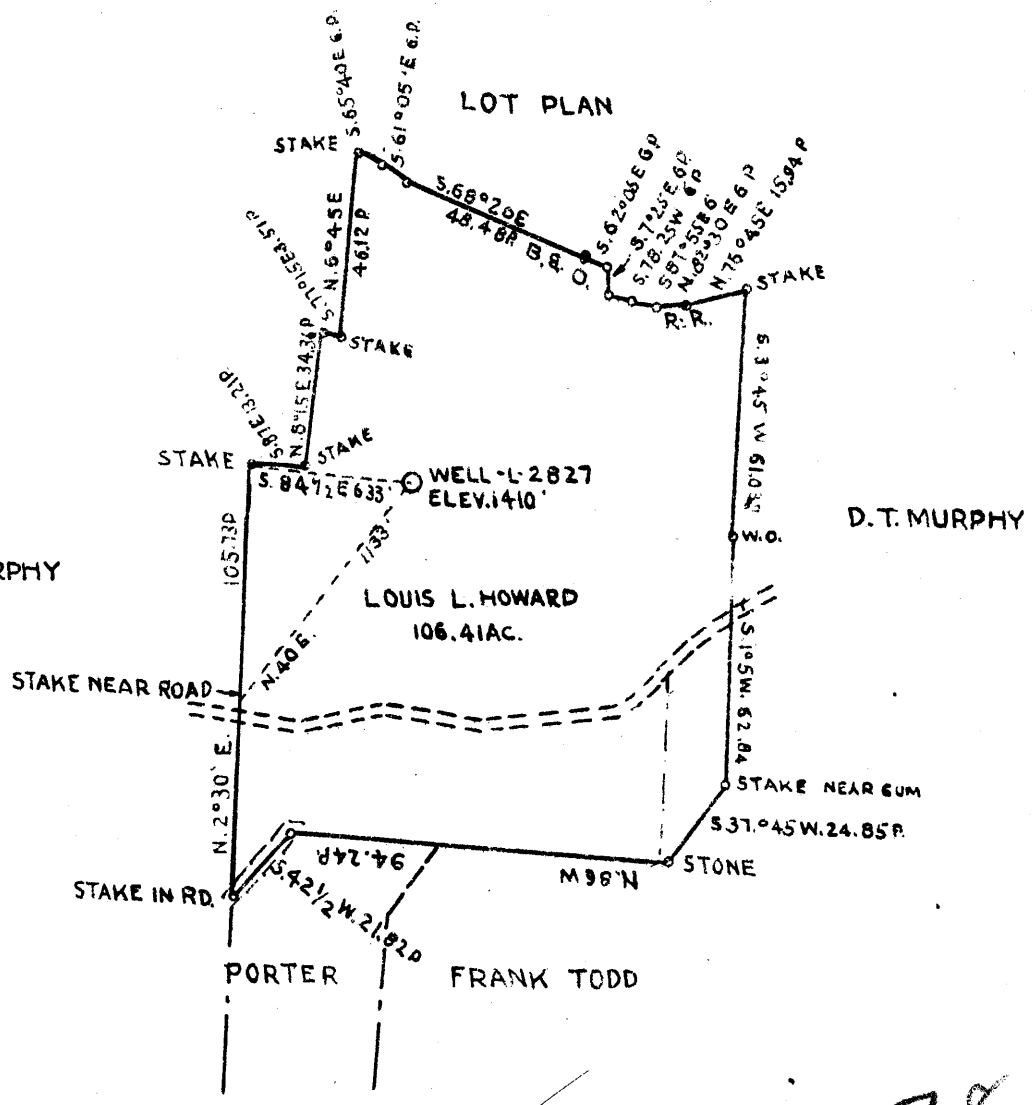


38

80



COAL OWNED BY T.L. ROGERSON, MOUNDSVILLE WVA.

0.725 2.78 W  
 2.72 W 0.73 Q

- New Location:
- Drill Deeper:
- Abandonment:

NOV - 2 1943

Company THE MANUFACTURERS LIGHT AND HEAT CO.  
 Address 800 UNION TRUST BLDG PITTSBURGH, PA.  
 Farm LOUIS L. HOWARD  
 Tract \_\_\_\_\_ Acres 106.41 Lease No. 2862  
 Well (Farm) No. 2 Serial No. 2827  
 Elevation (Spirit Level) 1410  
 Quadrangle CAMERON  
 County MARSHALL District LIBERTY  
 Engineer J. J. Mener  
 Engineer's Registration No. \_\_\_\_\_  
 File No. \_\_\_\_\_ Drawing No. Y-10-951  
 Date OCTOBER 21 1943 Scale 1" = 800

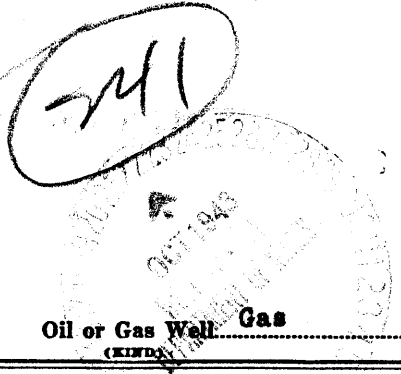
STATE OF WEST VIRGINIA  
 DEPARTMENT OF MINES  
 OIL AND GAS DIVISION  
 CHARLESTON

WELL LOCATION MAP  
 File No. MARS-199-A

— Denotes location of well on United States Topographic Maps, scale 1 to 62,500, latitude and longitude lines being represented by border lines as shown.  
 — Denotes one inch spaces on border line of original tracing.



STATE OF WEST VIRGINIA  
DEPARTMENT OF MINES  
OIL AND GAS DIVISION



*AA* 199-A  
Permit No. Drilled in 1923

WELL RECORD

Oil or Gas Well Gas

Company The Manufacturers Light & Heat Company  
Address 800 Union Trust Bldg., Pittsburgh, Pa.  
Farm L. L. Howard Acres 96  
Location (waters) \_\_\_\_\_  
Well No. 2 - 2827 Elev. 1110 ft.  
District Liberty County Marshall  
The surface of tract is owned in fee by W. W. & C. G. Howard  
Bank of McMeohen Address McMeohen, WVa.  
Mineral rights are owned by The Mfrs L. & H Co.,  
800 Union Trust Bldg. Address Pittsburgh, Pa.  
Drilling commenced 3/8/23  
Drilling completed 4/28/23  
Date Shot \_\_\_\_\_ From \_\_\_\_\_ To \_\_\_\_\_  
With \_\_\_\_\_

Casing and Tubing	Used in Drilling	Left in Well	Packers
Size			
16			Kind of Packer
18			
10		271	Size of
8 1/4		1036	
6 1/2		2119	Depth set
5 3/16			
3			Perf. top
2			Perf. bottom
Liners Used			Perf. top
			Perf. bottom

Open Flow \_\_\_\_\_ /10ths Water in \_\_\_\_\_ Inch  
\_\_\_\_\_ /10ths Merc. in \_\_\_\_\_ Inch  
Volume \_\_\_\_\_ Cu. Ft.  
Rock Pressure \_\_\_\_\_ lbs. \_\_\_\_\_ hrs.  
Oil \_\_\_\_\_ bbls., 1st 24 hrs.  
Fresh water \_\_\_\_\_ feet \_\_\_\_\_ feet  
Salt water \_\_\_\_\_ feet \_\_\_\_\_ feet

CASING CEMENTED \_\_\_\_\_ SIZE \_\_\_\_\_ No. Ft. \_\_\_\_\_ Date \_\_\_\_\_

COAL WAS ENCOUNTERED AT 555 FEET 36 INCHES  
638 FEET 48 INCHES 698 FEET 48 INCHES  
883 FEET 60 INCHES 983 FEET 60 INCHES

Formation	Color	Hard or Soft	Top	Bottom	Oil, Gas or Water	Depth Found	Remarks
Clay			0	16			
Lime & Slate			16	54			
Sand			54	73			
Slate & Lime			73	173			
Sand			173	202			
Slate & Lime			202	405			
Sand			405	435			
Slate & Lime			435	555			
Native Coal			555	558			
Slate			558	600			
Lime			600	638			
Coal			638	642			
Slate			<del>642</del>	668			
Bluff Sand			668	698			
Waynesburg Coal			698	702			
Mapletown Lime			702	883			
Mapletown Coal			883	888			
Lime			888	907			
Slate			907	955			
Lime & Slate			955	983			
Pittsburgh Coal			983	988			
Lime			988	1006			
Slate			1006	1044			
Murphy Sand			1044	1088			
Slate			1088	1092			
Sand			1092	1110			
Red Rock			1110	1130			
Slate & Lime			1130	1163			
Red Rock			1163	1204			
Lime			1204	1210			
Slate			1210	1255			
Red Rock			1255	1335			
Little Dunkard			1335	1365			
Slate			1365	1392			
Lime			1392	1427			
Slate & Lime			1427	1470			
Big Dunkard			1470	1520			
Slate			1520	1552			
Gas Sand			1552	1570			

Formation	Color	Hard or Soft	Top	Bottom	Oil, Gas or Water	Depth Found	Remarks
Slate			1570	1600			
Lime			1600	1624			
Slate			1624	1639			
1st Salt Sand			1639	1657			
Slate			1658	1687			
2nd Salt Sand			1687	1720			
Lime Shells			1720	1812			
3rd Salt Sand			1812	1830			
Slate			1830	1856			
Lime Shells			1856	1983			
3rd Salt Sand			1983	2044			
Slate			2044	2055			
Sand			2055	2074			
Slate			2074	2077			
Maxon Sand			2077	2094			
Slate			2094	2110			
Sand			2110	2114			
Slate			2114	2116			
Big Lime			2116	2147			
Big Injun			2147	2392			
Slate			2392	2398			
Squaw Sand			2398	2408			
Lime Shells			2408	2540			
Sand			2540	2565			
Slate			2565	2572			
Sand			2572	2697			
Slate			2697	2713 <del>36</del>			
30-Foot Sand			2713	2788			
Slate			2788	2793			
Sand			2793	2811			
Sand Shells			2811	2953			
Gordon Stray			2953	2975			
Slate			2975	2977			
Sand			2977	2996			
Slate			2996	3000			
Gordon Sand			3000	3067			
Slate			3067	3078			
4th Sand			3078	3080			
Slate			3080	3097			
5th Sand			3097	3102			
Slate			3102	3150			
Total depth				3150			

Date October 21st, 1943

APPROVED THE MANUFACTURERS LIGHT & HEAT CO., Owner

By Harry H. Fowler  
Land Dept. (Title) Office Mgr.