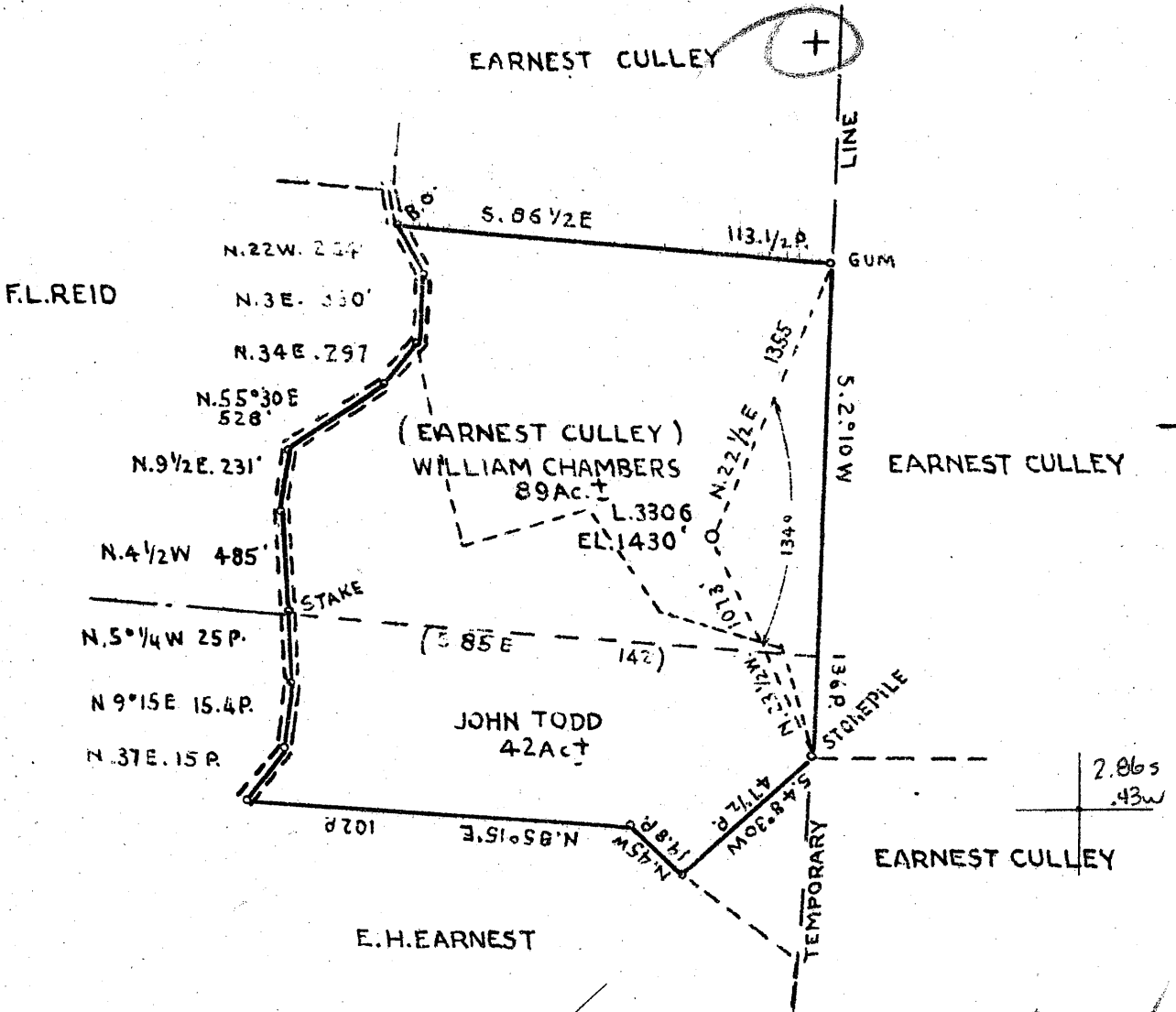


Latitude 39° 50'

Longitude 80° 30'



COAL OWNED BY STATE OF WEST VIRGINIA

- New Location...
- Drill Deeper...
- Abandonment...

3.125
2.55W
OCT 25 1943

216 W
3.18 @

Company THE MANUFACTURERS LIGHT AND HEAT CO.
 Address 800 UNION TRUST BLD'G. PITTSBURGH PA.
 Farm EARNEST CULLEY NOW WM. CHAMBERS
 Tract _____ Acres 89 Lease No. 2229
 Well (Farm) No. 1 Serial No. 3306
 Elevation (Spirit Level) 1430'
 Quadrangle CAMERON
 County MARSHALL District LIBERTY
 Engineer *W. L. ...*
 Engineer's Registration No. _____
 File No. O-25-29 Drawing No. Y-10-953
 Date OCT. 11-1943 Scale 1" = 800'

STATE OF WEST VIRGINIA
 DEPARTMENT OF MINES
 OIL AND GAS DIVISION
 CHARLESTON

WELL LOCATION MAP
 File No. MARS-198-A

Denotes location of well on United States Topographic Maps, scale 1 to 62,500, latitude and longitude lines being represented by border lines as shown.

Denotes one inch spaces on border line of original tracing

EARNEST CULLEY (Now Wm. Chambers) No. 1 (3306) - M. L. & H. Co. - MARS-198-A



STATE OF WEST VIRGINIA
DEPARTMENT OF MINES
OIL AND GAS DIVISION

240

Permit No. Drilled in 1928

Oil or Gas Well Gas
(KIND)

Company The Manufacturers Light & Heat Co.
Address 800 Union Trust Bldg., Pittsburgh, Pa.
Farm Earnest Culley Acres 100
Location (waters) _____
Well No. 1-3306 Elev. 1430 ft.
District Liberty County Marshall
The surface of tract is owned in fee by Mary Matthews
95 Maple Avenue Address Cameron, W. Va.
Mineral rights are owned by The Mfra Light & Heat Co.
800 Union Trust Bldg. Address Pittsburgh, Pa.
Drilling commenced 10/1/28
Drilling completed 11/10/28
Date Shot _____ From _____ To _____
With _____

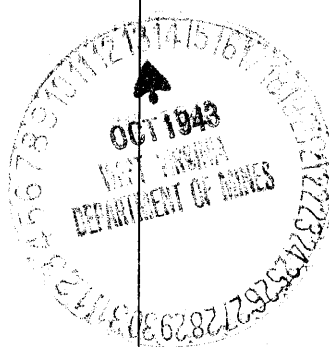
Casing and Tubing	Used in Drilling	Left in Well	Packers
Size			
16			Kind of Packer
18			
10	318'	318'	Size of
8 1/4	1520'	1520'	
6 3/4	2294'	2294'	Depth set
5 3/16			
3			Perf. top
2			Perf. bottom
Liners Used			Perf. top
			Perf. bottom

Open Flow _____ /10ths Water in _____ Inch
_____ /10ths Merc. in _____ Inch
Volume _____ Cu. Ft.
Rock Pressure 150 lbs _____ hrs.
Oil _____ bbls., 1st 24 hrs.
Fresh water _____ feet _____ feet
Salt water _____ feet _____ feet

CASING CEMENTED _____ SIZE _____ No. Ft. _____ Date _____

COAL WAS ENCOUNTERED AT 750 FEET 36 INCHES
830 FEET 48 INCHES 1120 FEET 72 INCHES
_____ FEET _____ INCHES _____ FEET _____ INCHES

Formation	Color	Hard or Soft	Top	Bottom	Oil, Gas or Water	Depth Found	Remarks
Clay			0	10			
Lime & Slate			10	37			
Sand			37	52			
Red Rock			52	80			
Lime & Slate			80	125			
Sand			125	146			
Slate & Lime			146	204			
Pink Rock			204	225			
Slate			225	263			
Sand			263	275			
Slate			275	300			
Red Rock			300	315			
Slate & Lime			315	363			
Pink Rock			363	385			
Lime & Slate			385	445			
Red Rock Sand			445	467			
Red Rock			467	492			
Slate			492	530			
Lime			530	556			
Slate			556	585			
Sand			585	610			
Slate			610	643			
Lime			643	668			
Pink Rock			668	685			
Slate			685	725			
Sand			725	750			
Crabapple Coal			750	753			
Slate & Lime			753	800			
Sand			800	817			
Sand			817	832			
Bluff Sand			800	830			
Waynesburg Coal			830	834			
Lime & Slate			834	1020			
Mapletown Coal			1020	1024			
Slate & Lime			1024	1120			
Pittsburgh Coal			1120	1126			
Slate & Lime			1126	1234			
Sand			1234	1265			



Formation	Color	Hard or Soft	Top	Bottom	Oil, Gas or Water	Depth Found	Remarks
Lime			1265	1280			
Murphy Sand			1280	1314			
Lime			1314	1314			
Red Rock			1314	1355			
Sand			1355	1374			
Red Rock			1374	1386			
Lime			1386	1420			
Red Rock			1420	1440			
Lime			1440	1500			
Pink Rock			1500	1520			
Lime			1520	1522			
Red Rock			1522	1540			
Lime			1540	1584			
Slate			1584	1622			
Big Dunkard Sand			1622	1647			
Slate			1647	1670			
Gas Sand			1670	1700			
Slate			1700	1770			
1st Salt Sand			1770	1810			
Slate			1810	1822			
Sand			1822	1845			
Slate			1845	1900			
2nd Salt Sand			1900	1930			
Slate			1930	1963			
Sand			1963	1978			
Slate			1978	2000			
3rd Salt Sand			2000	2075			
Slate			2075	2106			
Sand			2106	2135			
Lime			2135	2162			
Sand			2162	2177			
Slate			2177	2215			
Lime			2215	2224			
Slate			2224	2254			
Big Lime			2254	2318			
Big Injun			2318	2580			
Slate & Lime			2580	2920			
30-Foot Sand			2920	2934			
Slate			2934	2959			
Slate & Lime			2959	3025			
Pink Rock			3025	3060			
Slate			3060	3120			
50-Foot Sand			3120	3138			
Slate			3138	3180			
Gordon Stray			3180	3185			
Slate			3185	3188			
Pink Rock			3188	3190			
Gordon Sand			3190	3215			
Slate			3215	3245			
4th Sand			3245	3255			
Slate			3255	3400			
Total depth				3400			

Date October 12th, 194 3

APPROVED THE MANUFACTURERS LIGHT & HEAT CO., Owner

By Harry H. Fowler
Land Dept. (Title) Office Manager.