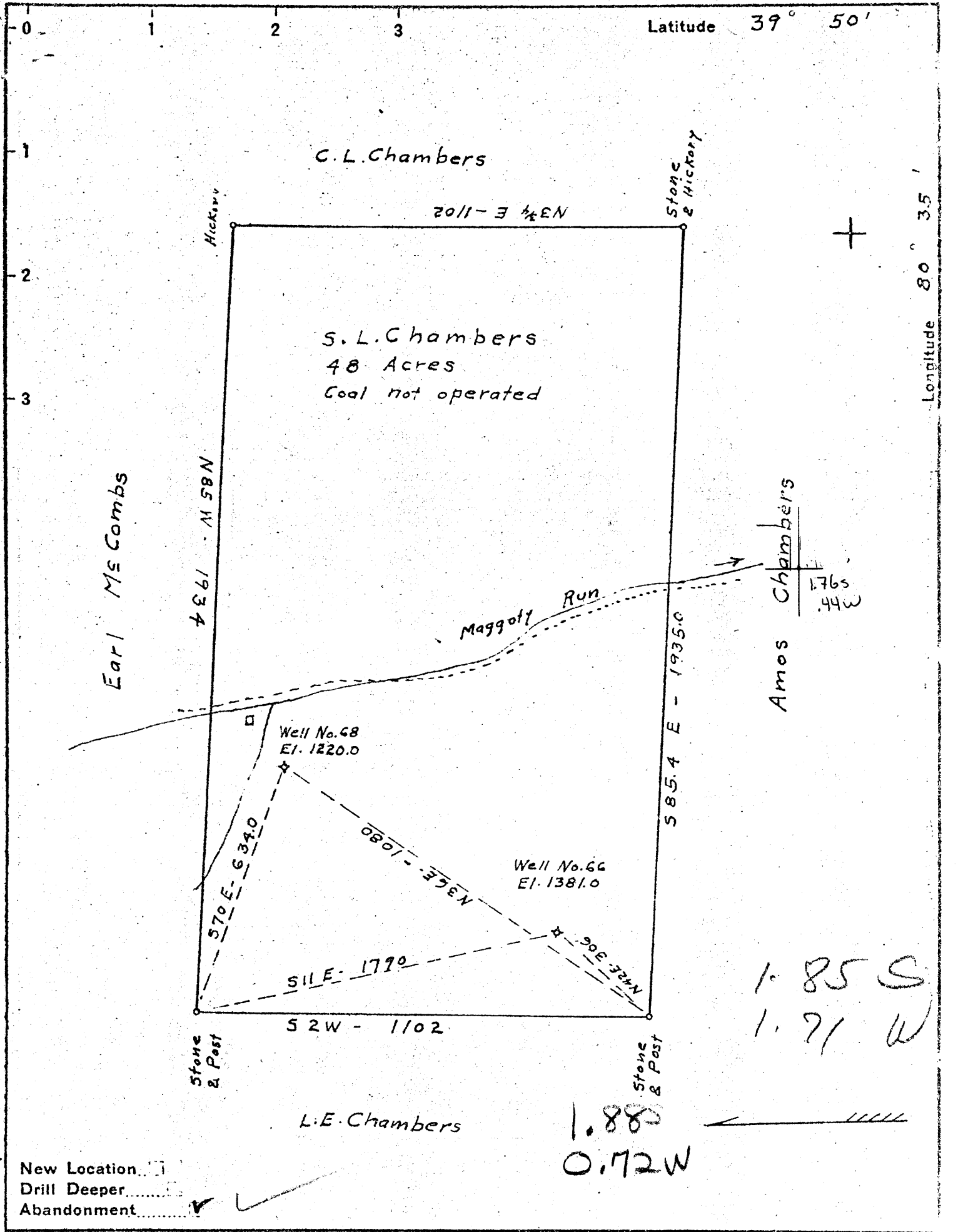


Latitude 39° 50'

Longitude 80° 35'



New Location   
 Drill Deeper   
 Abandonment

Company The Interstate Pipe & Supply Co.  
 Address P.O. Box 611 Marietta Ohio  
 Farm S.L. Chambers  
 Tract \_\_\_\_\_ Acres 48.0 Lease No. \_\_\_\_\_  
 Co. Nos 66 & 68  
 Well (Farm) No. one & Three Serial No. \_\_\_\_\_  
 Elevation (Spirit Level) 1381.0 & 1220.0  
 Quadrangle Cameron  
 County Marshall District Liberty  
 Engineer C.O. Jenwig  
 Engineer's Registration No. 811  
 File No. \_\_\_\_\_ Drawing No. \_\_\_\_\_  
 Date Dec. 23, 1940 Scale 1" = 300'

STATE OF WEST VIRGINIA  
 DEPARTMENT OF MINES  
 OIL AND GAS DIVISION  
 CHARLESTON

WELL LOCATION MAP

FILE NO. MARS - 1734-177  
 # 66 # 66

+ Denotes location of well on United States Topographic Maps, scale 1 to 62,500, latitude and longitude lines being represented by border lines as shown.

- Denotes one inch spaces on border line of original tracing.

STATE OF WEST VIRGINIA  
DEPARTMENT OF MINES  
OIL AND GAS DIVISION

219

WELL RECORD

Permit No. MARS-173-A

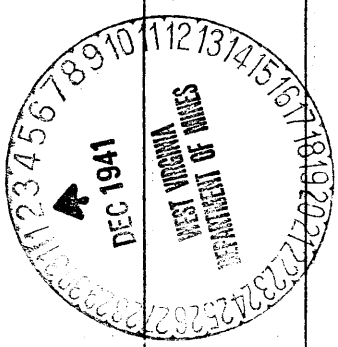
Oil or Gas Well Oil  
(KIND)

Company The Interstate Pipe & Supply Co.,  
Address Marietta, Ohio.  
Farm S. L. Chambers Acres 48  
Location (waters) \_\_\_\_\_  
Well No. 66 Elev. \_\_\_\_\_  
District Liberty County Marshall  
The surface of tract is owned in fee by S. L. Chambers  
Address \_\_\_\_\_  
Mineral rights are owned by T. L. Rogerson  
Address Moundsville, W.Va.  
Drilling commenced August 26, 1908  
Drilling completed October 3, 1908  
Date shot July 19, 1923 Depth of shot 3127-3133  
Nov. 12, 1926 3098-3106  
Open Flow /10ths Water in \_\_\_\_\_ Inch  
/10ths Merc. in \_\_\_\_\_ Inch  
Volume \_\_\_\_\_ Cu. Ft.  
Rock Pressure \_\_\_\_\_ lbs. \_\_\_\_\_ hrs.  
Oil \_\_\_\_\_ bbls., 1st 24 hrs.  
Fresh water \_\_\_\_\_ feet \_\_\_\_\_ feet  
Salt water \_\_\_\_\_ feet \_\_\_\_\_ feet

Casing and Tubing	Used in Drilling	Left in Well	Packers
Size <b>Conductor</b>	<b>14</b>	<b>14</b>	Kind of Packer _____
16	<b>236</b>		
13	<b>1420</b>	<b>206</b>	Size of _____
10	<b>2020</b>	<b>2020</b>	
8 1/4	<b>2225</b>	<b>2225</b>	Depth set _____
6 3/4	<b>2388</b>	<b>2388</b>	
5 3/16			Perf. top _____
3			Perf. bottom _____
2			Perf. top _____
Liners Used			Perf. bottom _____

CASING CEMENTED \_\_\_\_\_ SIZE \_\_\_\_\_ No. Ft. \_\_\_\_\_ Date \_\_\_\_\_  
COAL WAS ENCOUNTERED AT 1004 FEET 72 INCHES  
1099 FEET 84 INCHES FEET INCHES  
FEET INCHES FEET INCHES

Formation	Color	Hard or Soft	Top	Bottom	Oil, Gas or Water	Depth Found	Remarks
Mapletown Coal			1004	1010			
Pittsburgh Coal			1099	1106			
Murphy Sand			1185	1225			
Little Dunkard Sand			1420	1450			
Big Dunkard Sand			1580	1650			
Sand			1730	1745			
Maxon Sand			2105	2190			
Big Lime			2190	2231			
Big Injun Sand			2231				
Pay in Big Injun			2328	2332			
Total Depth				2333			
Drilled deeper May 28, 1923 to July 7, 1923.							
Big Injun Sand			2333	2500			
Sand			2845	2885			
Sand			2890	2915			
Gordan Stray			3045	3058	Oil at	3100	
Gordan Sand			3094	3144	Oil at	3105-3106	
Total Depth				3165	Oil & Gas	3130 - 31	



Formation	Color	Hard or Soft	Top	Bottom	Oil, Gas or Water	Depth Found	Remarks

Date November 29, 1941

APPROVED THE INTERSTATE PIPE & SUPPLY COMPANY, Owner

By H. H. Beren  
(Title) g.