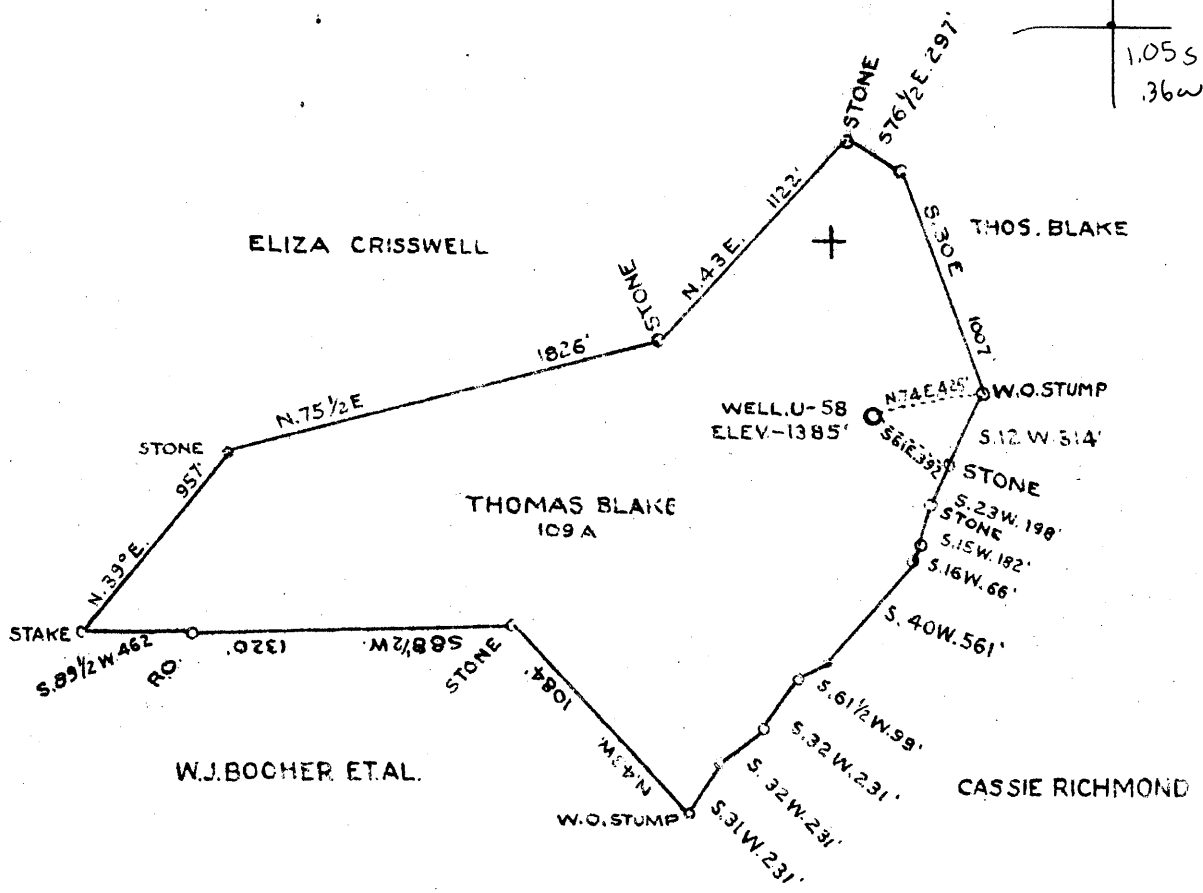


37 47 30

Latitude 39 50

Longitude 80 35

80 37 30"



3.83S W - 2.4
 2.36W S - 3.9

COAL OWNED BY T.L. ROGERSON

- New Location...
- Drill Deeper...
- Abandonment...

Company UNION GASOLINE AND OIL COMPANY
 Address 207 RILEY LAW BLDG. WHEELING W.VA.
 Farm THOMAS BLAKE
 Tract Acres 109± Lease No. 8907
 Well (Farm) No. 2 Serial No. U-5858
 Elevation (Spirit Level) 1385'
 Quadrangle CAMERON S.W. 1/4 S.
 County MARSHALL District LIBERTY
 Engineer: *J. L. M... ex.*
 Engineer's Registration No.
 File No. Drawing No. Y-8-907
 Date OCTOBER 11-1940 Scale 1" = 800'

STATE OF WEST VIRGINIA
 DEPARTMENT OF MINES
 OIL AND GAS DIVISION
 CHARLESTON

WELL LOCATION MAP
 File No. ~~MARS-133A~~
 143-A

— Denotes location of well on United States Topographic Maps, scale 1 to 62,500, latitude and longitude lines being represented by border lines as shown.
 — Denotes one inch spaces on border line of original tracing.