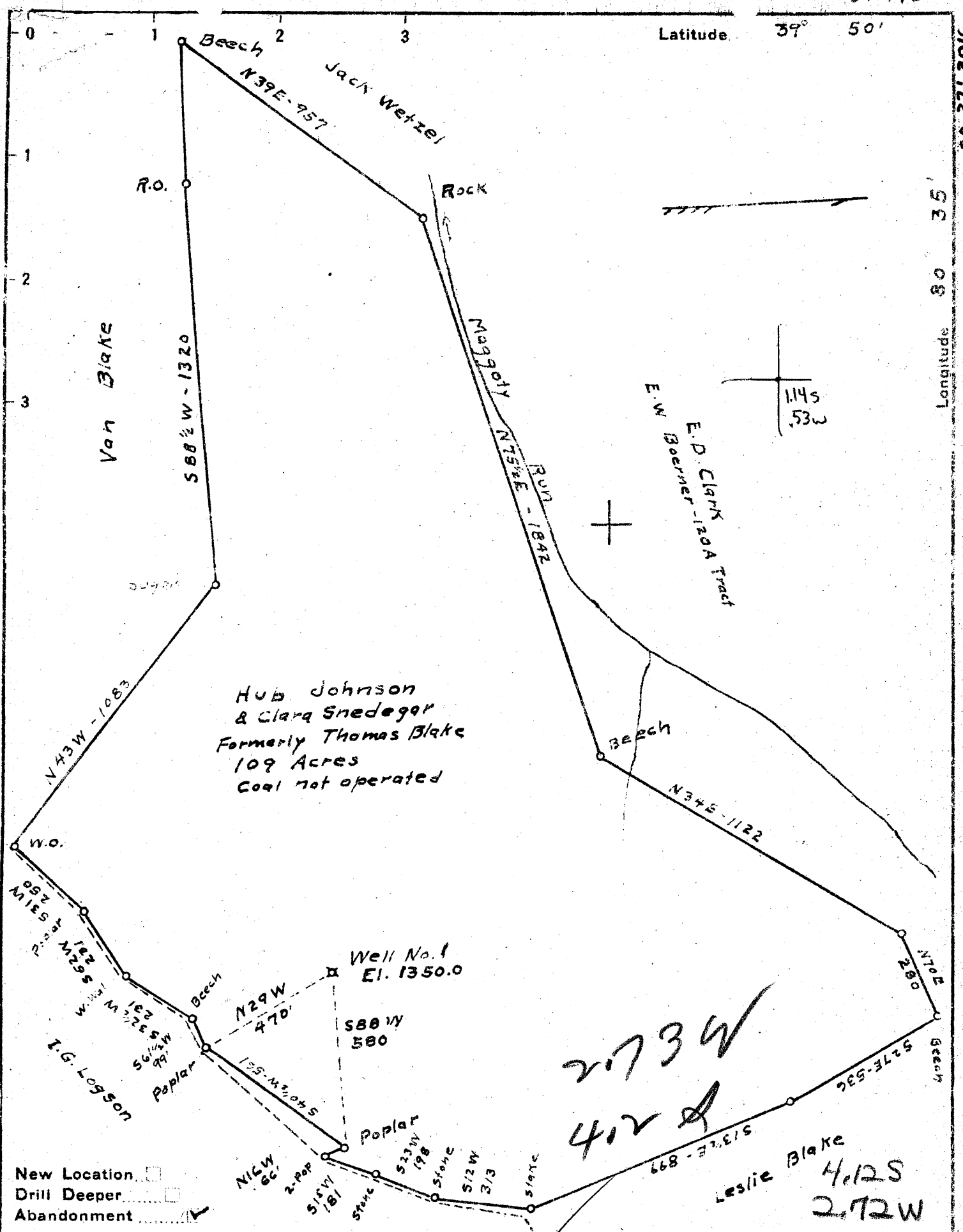


39° 47' 30" N  
80° 37' 30" W



Company Israel H. Beren  
 Address Marietta Ohio  
 Farm Thomas & Sarah Blake  
 Tract \_\_\_\_\_ Acres 109 Lease No. \_\_\_\_\_  
 Well (Farm) No. one Serial No. 1-3007  
 Elevation (Spirit Level) 1350.0  
 Quadrangle Cameron  
 County Marshall District Liberty  
 Engineer C.O. Newwig  
 Engineer's Registration No. 811  
 File No. \_\_\_\_\_ Drawing No. \_\_\_\_\_  
 Date Oct. 4 1940 Scale 1" = 400'

OCT 21 1940

STATE OF WEST VIRGINIA  
 DEPARTMENT OF MINES  
 OIL AND GAS DIVISION  
 CHARLESTON

**WELL LOCATION MAP**  
 FILE NO. MARS-141A

+ Denotes location of well on United States Topographic Maps, scale 1 to 62,500, latitude and longitude lines being represented by border lines as shown.

- Denotes one inch spaces on border line of original tracing.

STATE OF WEST VIRGINIA  
DEPARTMENT OF MINES  
OIL AND GAS DIVISION

188

WELL RECORD

Permit No. 141A

Oil or Gas Well Oil  
(Kind)

Company Jesse H. Egan  
Address Marietta, Ohio  
Farm Thomas & Sarah Blake Acres 100  
Location (waters) \_\_\_\_\_  
Well No. 1 - 3007 Elev. \_\_\_\_\_  
District Liberty County Marshall  
The surface of tract is owned in fee by \_\_\_\_\_  
Address \_\_\_\_\_  
Mineral rights are owned by \_\_\_\_\_  
Address \_\_\_\_\_  
Drilling commenced May 12, 1925  
Drilling completed June 20, 1925  
Date shot \_\_\_\_\_ Depth of shot \_\_\_\_\_  
Open Flow /10ths Water in \_\_\_\_\_ Inch  
/10ths Merc. in \_\_\_\_\_ Inch  
Volume \_\_\_\_\_ Cu. Ft.  
Rock Pressure \_\_\_\_\_ lbs. \_\_\_\_\_ hrs.  
Oil \_\_\_\_\_ bbls., 1st 24 hrs.  
Fresh water \_\_\_\_\_ feet \_\_\_\_\_ feet  
Salt water \_\_\_\_\_ feet \_\_\_\_\_ feet

Casing and Tubing	Used in Drilling	Left in Well	Packers
Size			
16			Kind of Packer
13			<u>Hook Wall</u>
10	<u>295</u>	<u>---</u>	Size of
8 3/4	<u>1598</u>	<u>1598</u>	
6 5/8	<u>2275</u>	<u>2275</u>	Depth set
5 3/16			<u>2535</u>
3			Perf. top
2		<u>2535</u>	Perf. bottom
Liners Used			Perf. top
			Perf. bottom

CASING CEMENTED \_\_\_\_\_ SIZE \_\_\_\_\_ No. FT. \_\_\_\_\_ Dat \_\_\_\_\_  
COAL WAS ENCOUNTERED AT 850 FEET 48 INCHES  
1045 FEET 80 INCHES 1145 FEET 84 INCHES  
\_\_\_\_\_ FEET \_\_\_\_\_ INCHES \_\_\_\_\_ FEET \_\_\_\_\_ INCHES

Formation	Color	Hard or Soft	Top	Bottom	Oil Gas or Water	Depth Found	Remarks
Waynesburg Coal			850	854			
Mapletown Coal			1045	1050			
Pittsburgh Coal			1145	1152			
Sand			1255	1300			
Little Dunkard			1505	1530			
Big Dunkard			1656	1680			
Gas Sand			1825	1875			
Salt Sand			2030	2080	Water	2065	
Maxon Sand			2165	2230			
Big Lime			2235	2275	Water, 3		bailers per hr., 2202'
Big Injun Sand			2275	2335	Water, 1		bailer per hr., 2303'
Fifty Foot			3090	3110	Show Gas	3100	
Gordon			3145	3172	Show oil	3145' to 3151'	

