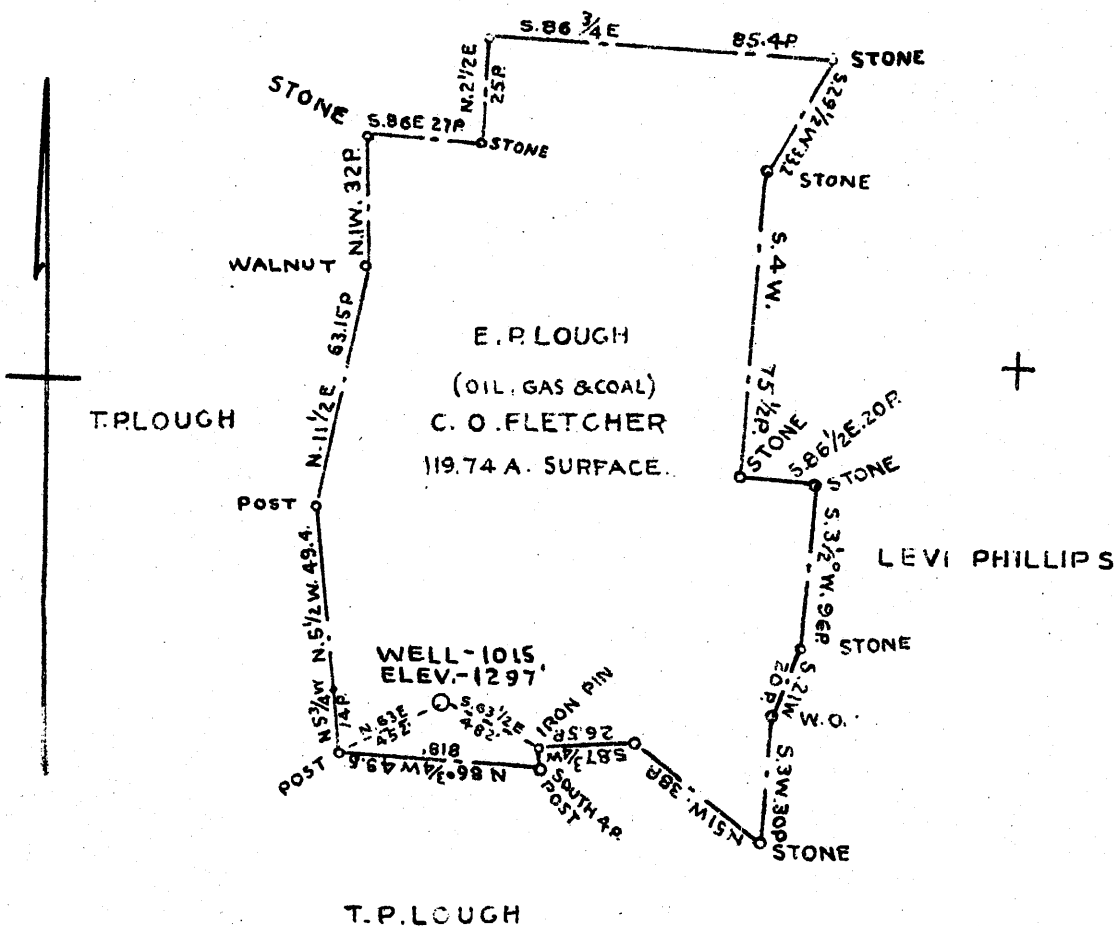


JOHN RITCHIE



COAL OWNED BY E.P. LOUGH

4.75S
1.59W

✓

1.6W
4.8W

OCT - 1 1940

- New Location...
- Drill Deeper...
- Abandonment...

Company THE MANUFACTURERS LIGHT & HEAT CO
 Address 800 UNION TRUST BLDG. PITTSBURGH PA
 Farm E.P. LOUGH
 Tract Acres 119.74 Lease No. 2844
 Well (Farm) No. 1 Serial No. 1015
 Elevation (Spirit Level) 1297'
 Quadrangle CAMERON S.E.
 County MARSHALL District CAMERON
 Engineer *J. Mercers*
 Engineer's Registration No.
 File No Drawing No. Y-8-870
 Date SEP T 16 1940 Scale 1" = 800'

STATE OF WEST VIRGINIA
 DEPARTMENT OF MINES
 OIL AND GAS DIVISION
 CHARLESTON

WELL LOCATION MAP
 File No. *MARS-135A*

— Denotes location of well on United States Topographic Maps, scale 1 to 62,500, latitude and longitude lines being represented by border lines as shown.

— Denotes one inch spaces on border line of original tracing.

Genesee District, Marshall County, W. Va.
 By Wheeling Natural Gas Co.
 Located 2.4 mi. N. E. of Genesee.
 Elevation, 1175' N.

	Top.	Bottom.
Pittsburgh Coal	698	706
Burkard Sand	1120	1160
Gas Sand	1360	1465
Salt Sand	1485	1710
Lime	1775	1820
Big Injun Sand	1820	2060
50-Ft. Sand (30-Ft.)	2610	2660
Stray Sand	2635	2697
Gordon Sand	2702	2749
(No sands below Gordon).		

STATE OF WEST VIRGINIA
DEPARTMENT OF MINES
OIL AND GAS DIVISION

186

WELL RECORD

135-A
Permit No. Drilled in 1901

Oil or Gas Well Gas
(Kind)

Company The Mfrs. Light & Heat Company
 Address 800 Union Trust Bldg., Pittsburgh, Pa.
 Farm E. P. Lough Acres 120
 Location (waters) _____
 Well No. 1 - 1015 Elev. 1297 ft.
 District Cameron County Marshall
 The surface of tract is owned in fee by E. P. Lough
25 Poplar Avenue Address Woodlawn, Wheeling, W. Va.
 Mineral rights are owned by The Mfrs. L & H Co.
800 Union Trust Bldg. Address Pittsburgh, Pa.
 Drilling commenced Nov. 18th, 1901
 Drilling completed Jan. 23rd, 1902
 Date shot Jan. 21, 1902 Depth of shot Gordon Sand
 Open Flow /10ths Water in _____ Inch
 /10ths Merc. in _____ Inch
 Volume _____ Cu. Ft.
 Rock Pressure _____ lbs. _____ hrs.
 Oil _____ bbls., 1st 24 hrs.
 Fresh water _____ feet _____ feet
 Salt water _____ feet _____ feet

Casing and Tubing	Used in Drilling	Left in Well	Packers
Size			
16			Kind of Packer
13	Pulled out		
10	do.		Size of
8 1/4			
6 5/8			Depth set
5 3/16			
3			Perf. top
2			Perf. bottom
Liners Used			Perf. top
			Perf. bottom

CASING CEMENTED _____ SIZE _____ No. FT. _____ Date _____
 COAL WAS ENCOUNTERED AT 698 FEET 96 INCHES
 _____ FEET _____ INCHES FEET _____ INCHES
 _____ FEET _____ INCHES FEET _____ INCHES

Formation	Color	Hard or Soft	Top	Bottom	Oil Gas or Water	Depth Found	Remarks
Conductor			16				
13" casing			200				
Pittsburgh Coal			698	706			
10" casing			1135				
Dunkard Sand			1120	1160			
Gas Sand			1360	1460			
Salt Sand			1485	1710			
Big Lime			1775	1820			
Big Injun			1820	2060			
6 5/8" casing			1885				
50-foot Sand			2610	2680			
Stray Sand			2685	2697			
Gordon Sand			2702	2750	Gas at 2708		
Total depth				3157			
No sand below 2708 - Nothing but slate and shells							

