

39°50'00"

Latitude

80°37'30"

Longitude

2.525
.38w

Topo Location

7.5' Loc. _____ 15' Loc. _____
 _____ (calc.) _____

MTW Co Rept #73

Company South Penn

Farm Lewis Chambers #2

15' Quad _____
 (sec.)

7.5' Quad Glenn Easton

District Liberty

WELL LOCATION PLAT

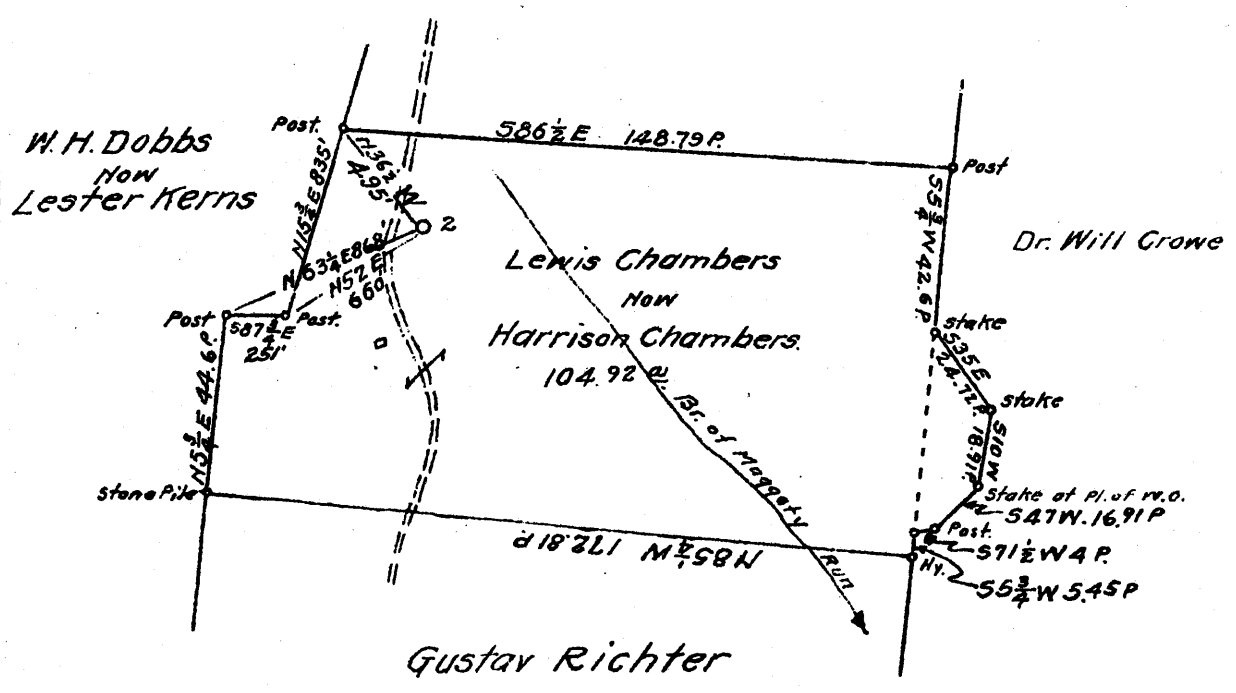
County OSL **Permit** 70206

Now Permit 30130

Latitude 39 50'

Longitude 80 35'

Chas. E. Carrigan & Jas. D. Parriott.



Surface:
 Harrison Chambers
 Cameron, W. Va.

Coal:
 Grave Creek Fuel Co.
 Uniontown, Pa.

New Location
 Drill Deeper
 Abandonment

2.66S 2.63W
 2.60W 2.7
 AUG - 1940

Company South Penn Nat. Gas Co.
 Address Parkersburg, W. Va.
 Farm Lewis Chambers
 Tract _____ Acres 104 Lease No. 30291
 Well (Farm) No. 2 Serial No. _____
 Elevation (Spirit Level) 1310.97
 Quadrangle Cameron
 County Marshall District Liberty
 Engineer E.C. Tabler
 Engineer's Registration No. _____
 File No. _____ Drawing No. _____
 Date June 21, 1940 Scale 1" = 800'

STATE OF WEST VIRGINIA
 DEPARTMENT OF MINES
 OIL AND GAS DIVISION
 CHARLESTON

WELL LOCATION MAP
 FILE NO. MARS-130A

+ Denotes location of well on United States Topographic Maps, scale 1 to 62,500, latitude and longitude lines being represented by border lines as shown.

- Denotes one inch spaces on border line of original tracing.

STATE OF WEST VIRGINIA
DEPARTMENT OF MINES
OIL AND GAS DIVISION

182

WELL RECORD

Permit No. **130-A**

Oil or Gas Well **OIL**
(KIND)

Company **South Penn Natural Gas Company**
 Address **Union Trust Bldg. Parkersburg, W. Va.**
 Farm **Lewis Chambers** Acres **104**
 Location (waters) **Maggoty**
 Well No. **2** Elev. **1310.97'**
 District **Liberty** County **Marshall**
 The surface of tract is owned in fee by **Harrison Chambers**
Cameron, W. Va.
 Mineral rights are owned by **Harrison Chambers,**
Glen Easton W. Va.
 Drilling commenced **Jan. 12, 1903**
 Drilling completed **Sept. 18, 1903**
 Date shot **8-25-03 60 qt** **8-21-07 80 qt** Depth of shot **--**
 Open Flow /10ths Water in **--** Inch
 /10ths Merc. in **--** Inch
 Volume **--** Cu. Ft.
 Rock Pressure **--** lbs. **--** hrs.
 Oil **60** bbls., 1st 24 hrs.
 Fresh water **--** feet **--** feet
 Salt water **--** feet **--** feet

Casing and Tubing	Used in Drilling	Left in Well	Packers
Size			
16.			Kind of Packer --
13.			--
10.	2164'8"		Size of --
8 1/4	1976'6" (Pulled)		--
6 5/8	2191'9"		Depth set --
5 3/16	2324'6"		--
3.			Perf. top --
2.			Perf. bottom --
Liners Used			Perf. top --
Cond. 16'			Perf. bottom --

CASING CEMENTED **--** SIZE **--** No. Ft. **--** Date **--**
 COAL WAS ENCOUNTERED AT **765** FEET **36** INCHES
950 FEET **36** INCHES. **1040** FEET **60** INCHES
-- FEET **--** INCHES. **--** FEET **--** INCHES

Formation	Color	Hard or Soft	Top	Bottom	Oil, Gas or Water	Depth Found	Remarks
Native Coal			765	769			
Mapletown Coal			950	953			
Pittsburgh Coal			1040	1045			
Salt Sand			1800	1950			
Big Lime			2120	2165			
Big Injun Sand			2165	2400			
Stray Sand			2980	2985			
Gordon Sand			3022	3047			
					Pay	3033-3037	
Total Depth				3050			

