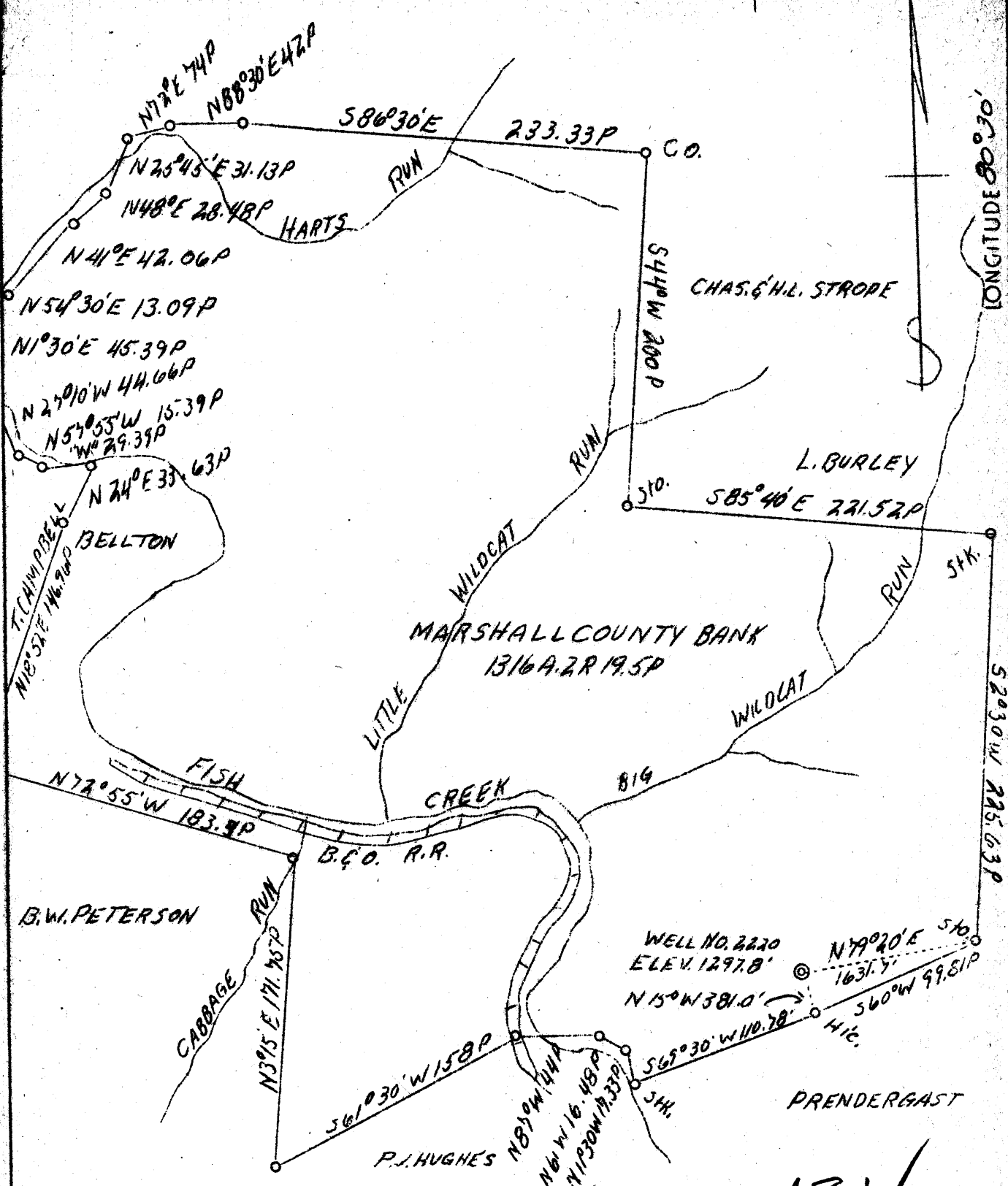


LATITUDE 39° 45'

LONGITUDE 80° 30'



COAL OWNED BY G.L. HIBBS EST., WIL LAIDLEY AGT. & THE AVERSHIRE CORP.

F.B.D.

0.28 S 39° 45' } 25' 160' - Littleton
 1.70 W 80° 45' } 25' 90' -
 JUL 31 1939
 100 2/14/2007

1.8 W
 0.29

Company Address Farm Acres Lease No. Well (Farm) No. Serial No. Elevation (SL) Quadrangle County District Engineer Drawing No. Date Scale

Manufacturers Light & Heat Co.
 800 Union Tr. Bldg., Pgh. Pa.
 Marshall County Bank
 1316.62
 2873
 6
 2220
 1297.8
 Littleton
 Marshall
 Liberty
 Fred H. Sochor
 Y-8-412
 July 19, 1939
 1" = 1320'

(Handwritten initials)

STATE OF WEST VIRGINIA
 Department of Mines
 OIL & GAS DIVISION
 Charleston

WELL LOCATION MAP
 File No. Mars-102-A

x Denotes location of well on U. S. Topographic Maps, scale 1 to 62,500, latitude and longitude lines being represented by border lines as shown.

- Denotes one inch spaces on border line of original tracing.

Liberty District, Marshall County, W. Va.
 Manufacturers Light & Heat Co., 500 Union Tr. Bldg., Pittsburgh, Pa.
 On 1316 acres, surface owned by Marshall County Bank, Moundsville,
 W. Va., and mineral rights by WLAH Co., Pittsburgh, Pa.

Drilled prior to June 1, 1929.

Elevation, 1297'.

12' conductor; 10" casing, 247'; 8 1/2", 1650'; 6-5/8", 2304';
 4" tubing, 2449'.

Coal was encountered at 600-602, 750-753, 810-813, and 1160-1167'

Abandonment reported to Dept. of Mines Dec. 3, 1931.

	Top.	Bottom.
Coal	600	- 602
Coal	750	- 753
Fairview Coal	810	- 813
Pittsburgh Coal (2 barrels water per hr.)	1160	- 1167
Sand	1272	- 1292
Sand	1500	- 1530
Big Darkard Sand	1650	- 1740
Salt Sand	1945	- 1995
2nd Salt Sand (show of gas at 2075')	2045	- 2095
Maxton Sand	2250	- 2267
Big Line	2330	- 2389
Big Injun Sand (show of gas at 2400')	2389	- 2634
Sand	2800	- 2886
50-Ft. Sand	3178	- 3195
Stray Sand (show of gas at 3255')	3232	- 3270
4th Sand	3333	- 3340
5th Sand	3395	- 3402
Slate and shells, to bottom	3402	- 3677

Well packed in Big Injun Sand at
 2420' with one 6-5/8" x 4" Rock
 Wall Packer.

*Abundant
near Littleton NE*

WEST VIRGINIA DEPARTMENT OF MINES
OIL AND GAS DIVISION

165

WELL RECORD

Drilled in 1918

Permit No.

Oil or Gas Well **Gas**
(Kind)

Company **The Manufacturers Light & Heat Company**
 Address **800 Union Trust Bldg., Pittsburgh, Pa.**
 Farm **Marshall County Bank** Acres **1200**
 Location (waters)
 Well No. **2220** Elev. **1297**
 District **Liberty** County **Marshall**
 The surface of tract is owned in fee by **Marshall County Bank**
 Address **Moundsville, WVa.**
 Mineral rights are owned by **The Mfrs. Light & Heat Co.**
800 Union Trust Bldg. Address **Pittsburgh, Pa.**
 Drilling commenced **Feb. 18, 1918**
 Drilling completed **June 15, 1918**
 Date shot Depth of shot
 Open Flow /10ths Water in Inch
 /10ths Merc. in Inch
 Volume Cu. Ft.
 Rock Pressure **55** lbs. **1/2** hrs.
 Oil bbls., 1st 24 hrs.
 Fresh water feet
 Salt water feet

Casing and Tubing	Used in Drilling	Left in Well	Packers
Size			
16.			Kind of Packer.....
13.			
10.	2 1/2		Size of. 6 5/8 x 4
8 3/4	1650	1650	
6 5/8.	23 1/4	23 1/4	Depth set. 212 1/2
5 3/16.			
5 1/2"		21 1/2	Perf. top.....
2.			Perf. bottom.....
Liners Used.....			Perf. top.....
			Perf. bottom.....

CASING CEMENTED..... SIZE..... No. FT..... Date.....
 COAL WAS ENCOUNTERED AT **600** FEET **2 1/2** INCHES
750 FEET **3/8** INCHES **810** FEET **3/8** INCHES
1160 FEET **8/4** INCHES FEET INCHES

Formation	Color	Hard or Soft	Top	Bottom	Oil Gas or Water	Depth Found	Remarks
Coal			600	602			
Coal			750	753			
Pairview Coal			810	813			
Pittsburgh Coal			1160	1167	2 bailers water per hour		
Sand			1272	1292			
Sand			1500	1530			
Big Dunkard			1650	1740			
Salt Sand			1915	1995			
2nd Salt Sand			2015	2095	Show of gas at 2075		
Maxon Sand			2250	2267			
Big Lime			2330	2389			
Big Injun			2389	2634	Show of gas at 2400		
Sand			2800	2886	do.	3255	
Fifty Foot			3178	3195			
Stray Sand			3232	3270			
4th Sand			3333	3340			
5th Sand			3395	3402			
Slate & Shells			3402	3677			
Total depth				3677	Well shut in 6/22/18		

