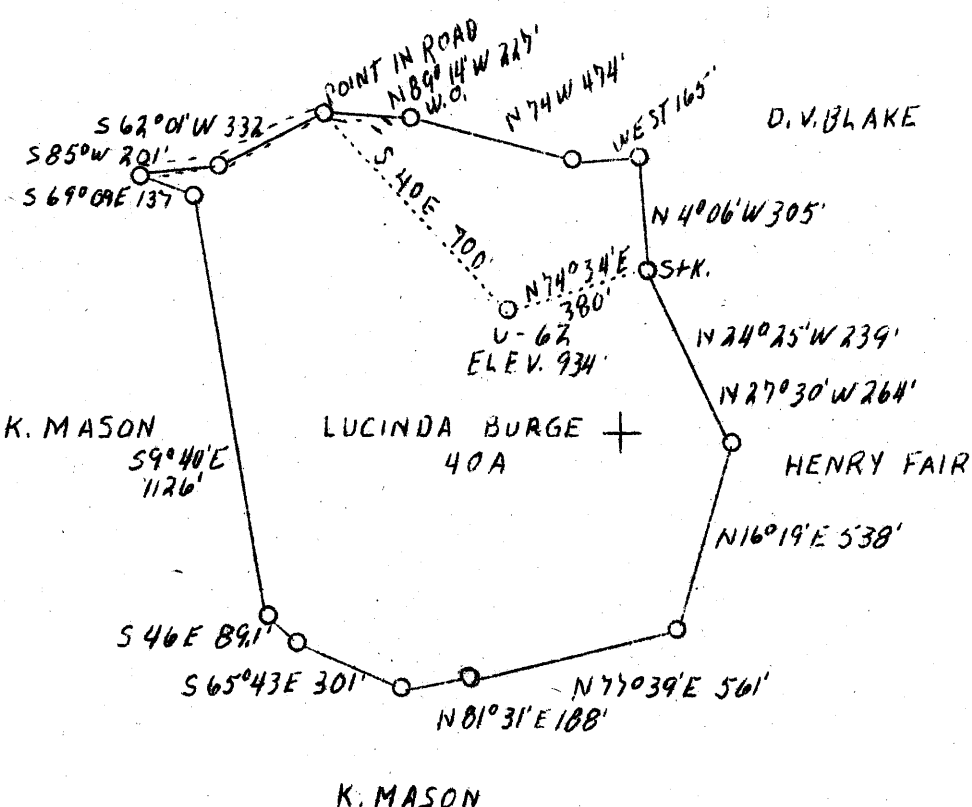


LATITUDE 39° 50'

LONGITUDE 80° 35'

W. W. CHAMBERS



2.99 W  
4.62 S

4.55 S  
2.94 W

SUCCESSORS OF J. V. THOMPSON  
TO REED SMITH SHAW & McCLAY  
UNION TRUST BLDG. PGH. PA.

Well A8D.

Company	Union Gasoline & Oil Corp.,	STATE OF WEST VIRGINIA
Address	209 Riley Law Bldg., Wheeling, W. Va.	Department of Mines OIL & GAS DIVISION Charleston
Farm	Lucinda Burge	WELL LOCATION MAP
Tract	One	
Acres	40	File No. <u>Mars-92-A</u>
Lease No.	2303	x Denotes location of well on U. S. Topographic Maps, scale 1 to 62,500, latitude and longitude lines being represented by border lines as shown.  - Denotes one inch spaces on border line of original tracing.
Well (Farm) No.	One	
Serial No.	U-62	
Elevation (SL)	934	
Quadrangle	Cameron S. W. 1/4	
County	Marshall	
District	Liberty	
Engineer	J. C. Mercer - Reg. No.	
Drawing No.	Y-8-199	
Date	Jan. 27, 1939	
Scale	1" = 500'	