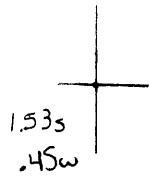


Latitude



Longitude

**Topo Location**

7.5' Loc. \_\_\_\_\_ 15' Loc. \_\_\_\_\_  
 \_\_\_\_\_ (calc.) \_\_\_\_\_

Company Union G+O

Farm John Bickel et al #1

15' Quad \_\_\_\_\_  
(sec.)

7.5' Quad Wileyville

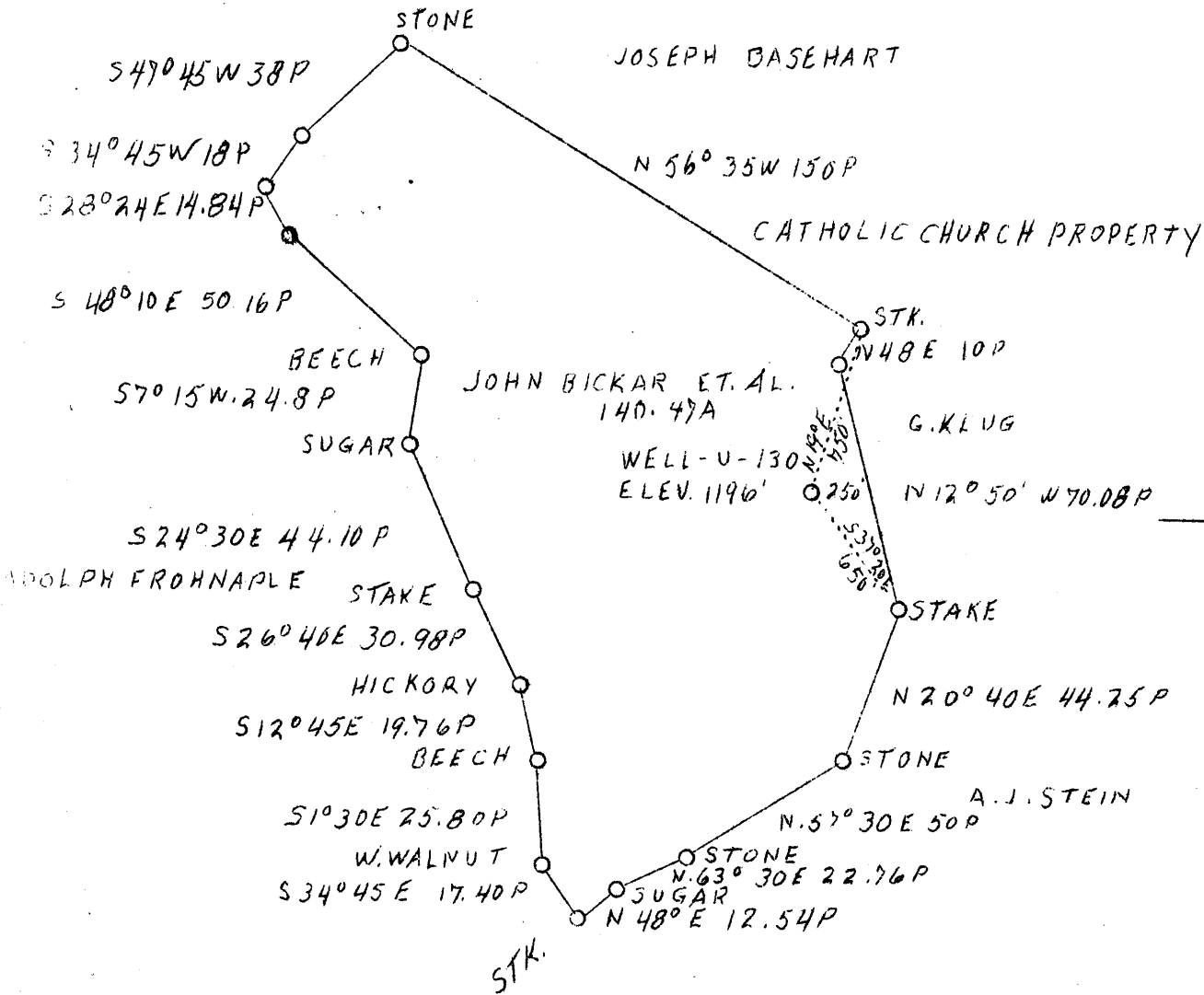
District Meade

**WELL LOCATION PLAT**

County OSI Permit 30089

LATITUDE 39° 45'

LONGITUDE 80° 40'



COAL OWNED BY T.L. ROGERSON MOUNDSVILLE W.VA.

W - 2.66

S - 1.61

1.59S  
2.63W

WELL ABD.

Company	Union Gasoline & Oil Co.	STATE OF WEST VIRGINIA
Address	209 Riley Law Bldg. Martinsburg, W. Va.	Department of Mines
Farm	John Bickar et al.	OIL AND GAS DIVISION
Acres	140.47	Charleston
Lease No.	3141	WELL LOCATION MAP
Well (Farm) No.	1	File No. <u>Mays-89-A</u>
Serial No.	U - 130	x Denotes location of well on U.S. Topo- graphic Maps, scale 1 to 62,500; latitude and longitude lines being represented by border lines as shown.
Elev. (Spirit Level)	1196'	- Denotes one inch spaces on border line of original tracing.
Quadrangle	Littleton N.W. 1/4	
County	Marshall	
District	Meade	
Eng.	J.C. Mercer(?)	
Drawing No.	Y - 153	
Date	11/18/38	
Scale	1" - 800'	