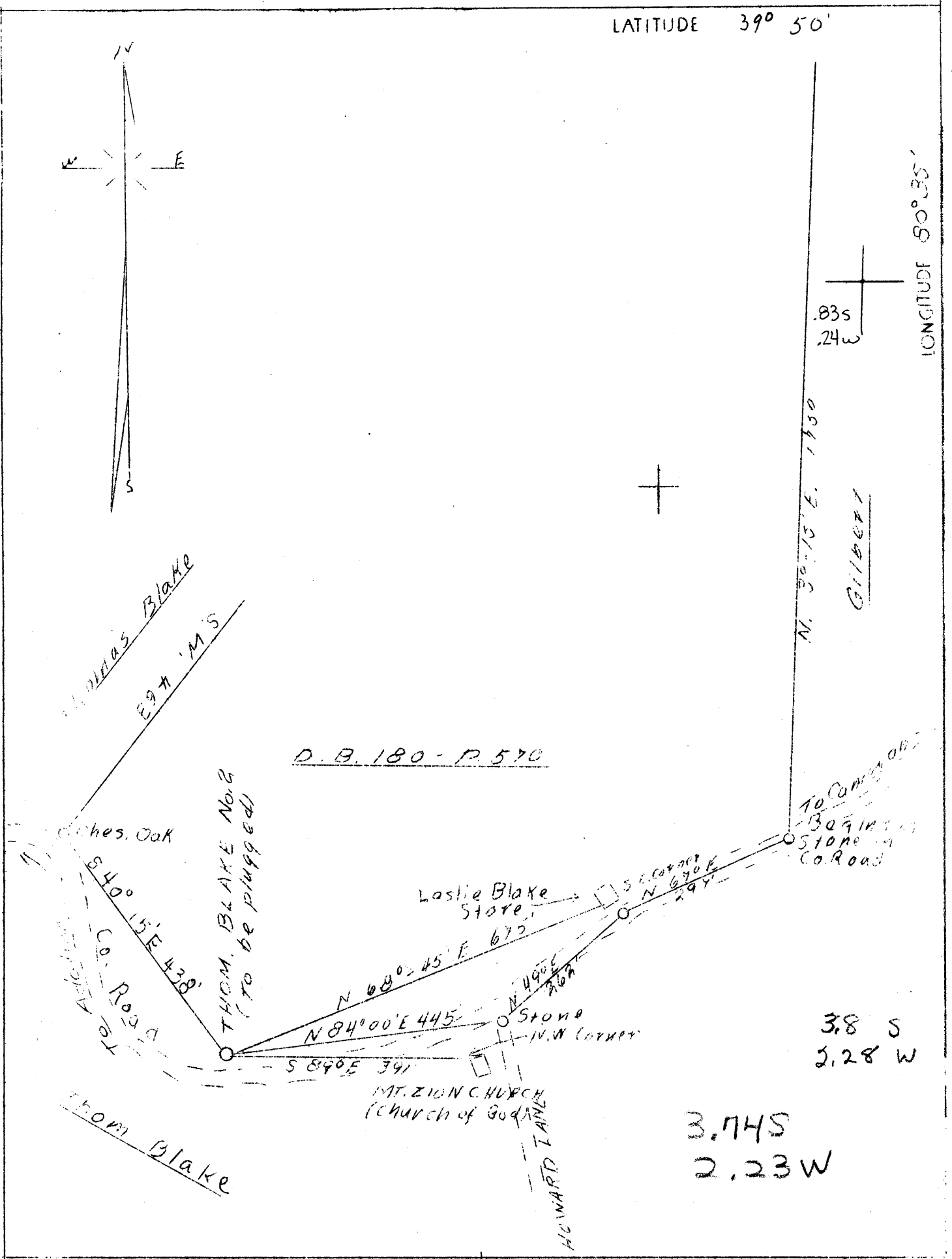
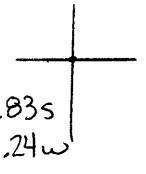
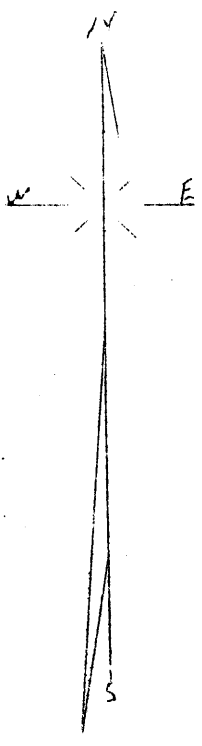


39°47'30"

LATITUDE 39° 50'

80°37'30"

LONGITUDE 80°35'



Company	Lynn Camp Oil & Gas Co.
Address	Cameron, W. Va.
Farm	Thomas Blake
Tract	One
Acres	27.5
Well (Farm) No.	Two
Elevation (SP)	1346
Quadrangle	Cameron
County	Marshall
District	Liberty
Engineer	Gordon W. Sammons
Eng. Reg. No.	509
Date	Oct. 6, 1938
Scale	1" - 200'

STATE OF WEST VIRGINIA
 Department of Mines
 OIL & GAS DIVISION
 Charleston

WELL LOCATION MAP

File No. Mars-88-A

x Denotes location of well on U. S. Topographic Maps, scale 1 to 62,500, latitude and longitude lines being represented by border lines as shown.

- Denotes one inch spaces on border line of original tracing.