

39°45'00"

Latitude

80°42'30"

1.47s	
.23w	

Longitude

Topo Location

7.5' Loc. _____ 15' Loc. _____
 _____ (calc.) _____

Company Union F&O Co

Farm Joseph Baschert # U-128

15' Quad _____
(sec.)

7.5' Quad Wileyville

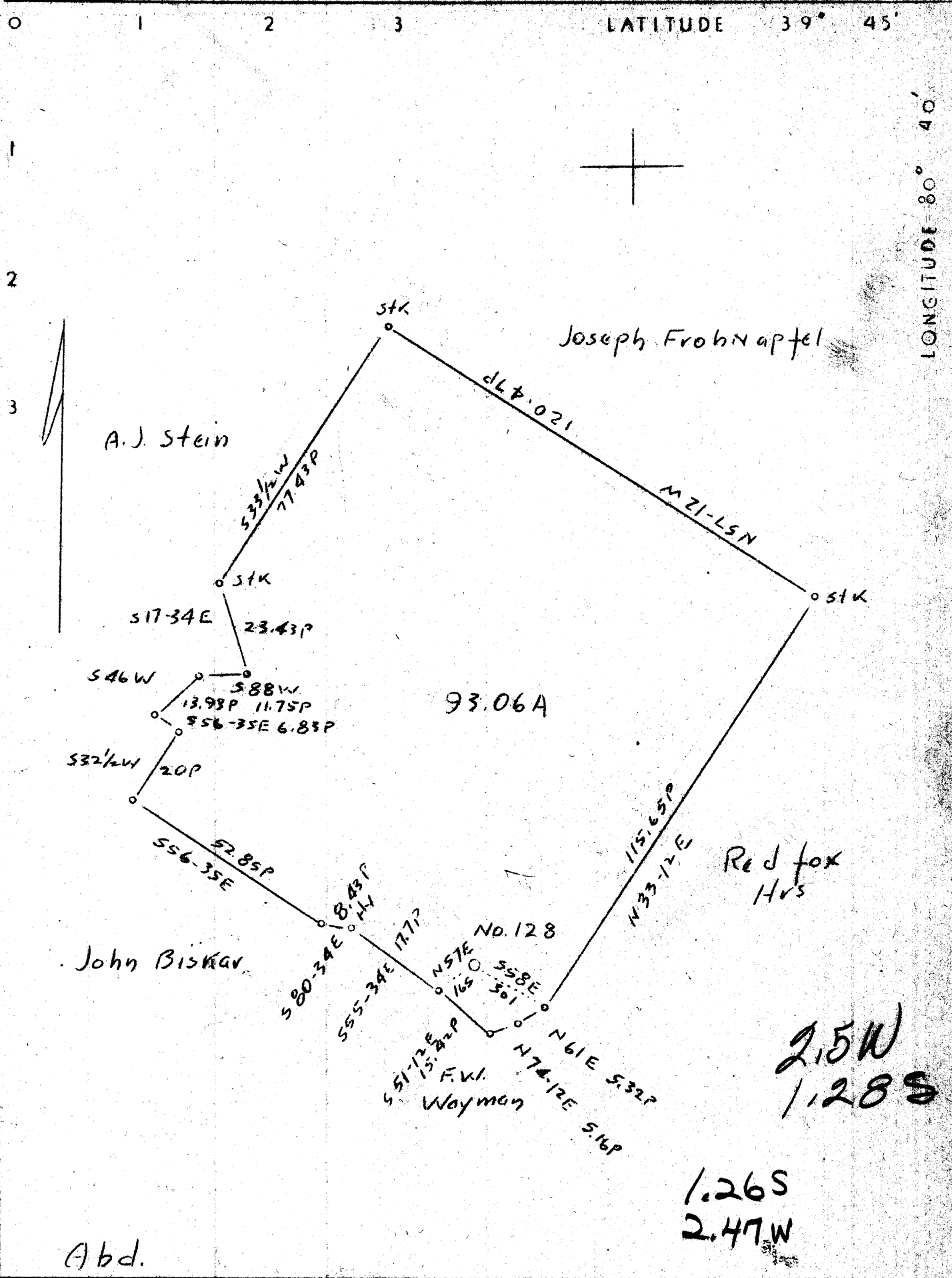
District Meado

WELL LOCATION PLAT

County 051 Permit 30082

LATITUDE 39° 45'

LONGITUDE 80° 40'



Company	Union Gasoline & Oil Co.
Address	Riley Law Bldg., Wheeling, W.Va.
Farm	Joseph Baschart
Tract	Acres 93.06 Lease No. 3142
Well (Farm) No.	4 Serial No. U-128
Elevation (Spirit Level)	1424.2'
Quadrangle	Littleton <i>N.E.</i>
County	Marshall District Meade
Engineer	H.D. O'Connor
Engineer's Registration No.	
File No.	Drawing No. Y-7-923
Date	Feb. 21, 1938 Scale 1"=500'

STATE OF WEST VIRGINIA
 Department of Mines
 OIL AND GAS DIVISION
 CHARLESTON

WELL LOCATION MAP
 File No. MARS-82A

+ Denotes location of well on United States Topographic Maps, scale 1 to 62,500, latitude and longitude lines being represented by border lines as shown.

— Denotes one inch square on border line of original map.