

39°45'00"

Latitude

80°40'00"

Longitude

+
 .99s
 |
 2.18w

Topo Location

7.5' Loc. _____ 15' Loc. _____
 _____ (calc.) _____

Company South Penn Oil Co

Farm Andrew Yeager #1

15' Quad _____
(sec.)

7.5' Quad Wileyville

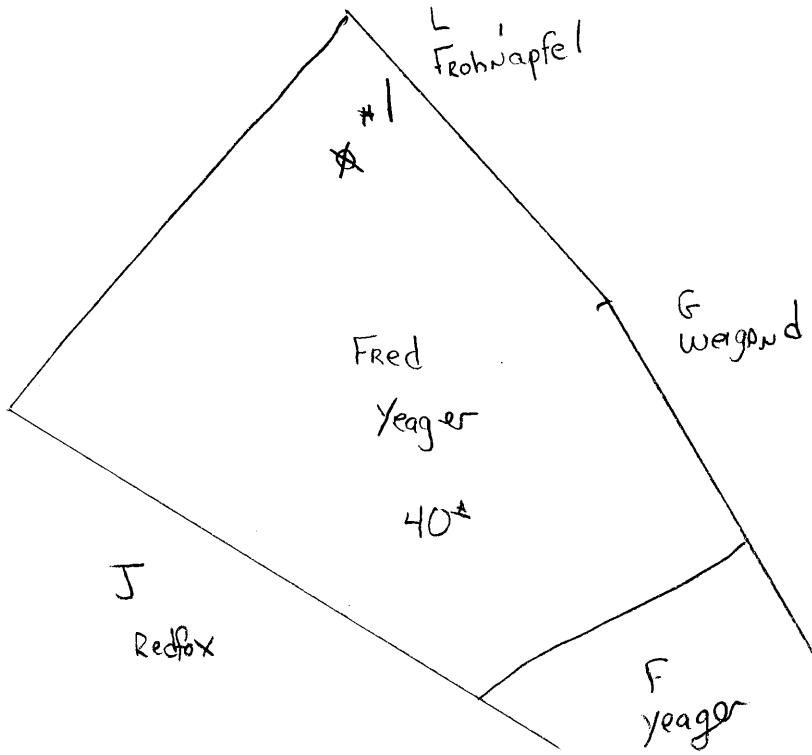
District Moabe

WELL LOCATION PLAT

County 051 **Permit** 30062

Meade dist

39° 45''



80° 40''

30062

Meade District, Marshall County, W. Va.

By South Penn Oil Co., Chamber of Commerce Bldg., Pittsburgh, Pa.

On 53 acres, surface owned by Fred Yeager, R. F. D. No. 1,

Proctor, W. Va., and mineral rights by Maria Yeager, Anna

Klug, Atty.-in-fact, Route No. 1, Proctor, W. Va.

Elevation, 1298.85' ±.

10" casing, 1359' 7" (812' pulled); 8 1/2", 1628' 5" (pulled);

6-5/8", 2484' 4"; 5-3/16", 2381' 2".

Coal was encountered at ~~1020-1030'~~ 710-715, and 920-925', and 1020-1030'.

Abandonment reported to Dept. of Mines Sept. 4, 1936.

Oil well.

	Top.	Bottom.
Native coal (Waynesburg)	710	- 715
Mapletown (Sewickley) Coal	925	- 930
Pittsburgh Coal	1020	- 1030
Salt Sand	1800	- 1945
Big Lime	2080	- 2120
Big Injun Sand	2120	- 2420
Stray Sand	2990	- 3005
Gordon Sand (oil)	3026	- 3041
Total depth		3044

MARS-62-A