

McCONAUGHY NO. 1 WELL.

*Cameron*  
 .....District, Marshall County, W. Va.  
 By Cameron Heat & Light Co., Cameron, W. Va.  
 Elevation, 1060', 1138  
 Plugged.  
 Well was shot at 2746 to 2750 and 2778 to 2810'.  
 Producing well from 1900 to 1929.  
 Abandonment reported to Dept. of Mines July 10, 1935.  
 Record from Mr. Straub 9-11-39.

	Top.	Bottom.
Pittsburgh Coal	750	- 756
Little Dunkard Sand	1120	- 1140
Big Dunkard Sand	1210	- 1245
Gas Sand	1440	- 1465
Salt Sand	1581	- 1615
Horton Sand	1800	- 1830
Big Lime	1860	- 1900
Big Injun Sand	1900	- 2148
50-Ft. Sand (gas at 2748')	2726	- 2750
Gordon Stray Sand (gas at 2780')	2776	- 2812
Total depth		2832

McCONAUGHEY NO. 1 WELL.

*Cameron*  
 .....District, Marshall County, W. Va.  
 By Cameron Heat & Light Co.  
 MW-22.

10" pipe, 924' 9" (pulled); 8" pipe, 1407' 5" (1225'); 6" pipe,  
 1937' 4" (pulled, 8-6-35, 1916').  
 Another note with date destroyed: 2" tubing pulled, 2600' at 14¢;  
 6" casing pulled, 1916', at 50¢; 8" casing pulled, 1400', at 65¢.

Plugged.

Shot Oct. 17, 1924.

2865 ft. 8", of 2" tubing, 11-9-24.

Dec. 6, 1927, set packer with 2" tubing at 2738' in 50-ft. Sand.

Pulled 2" tubing 6-21-35, 2700'.

Measuring line run 6-28-35; total depth, 2765'.

Elevation..... 1738

Record from Mr. Straub 9-11-39.

	Top.	Bottom.
Top of 50-ft. Sand (gas at 2746-2750')	2726	....
Gordon Stray Sand (gas at 2760'; more gas at 2804')	2776	2812
4th Sand	2862	2867
Total depth (bridged)		2872½

50-ft. shot, top 2746'; bot. 2752' 6".

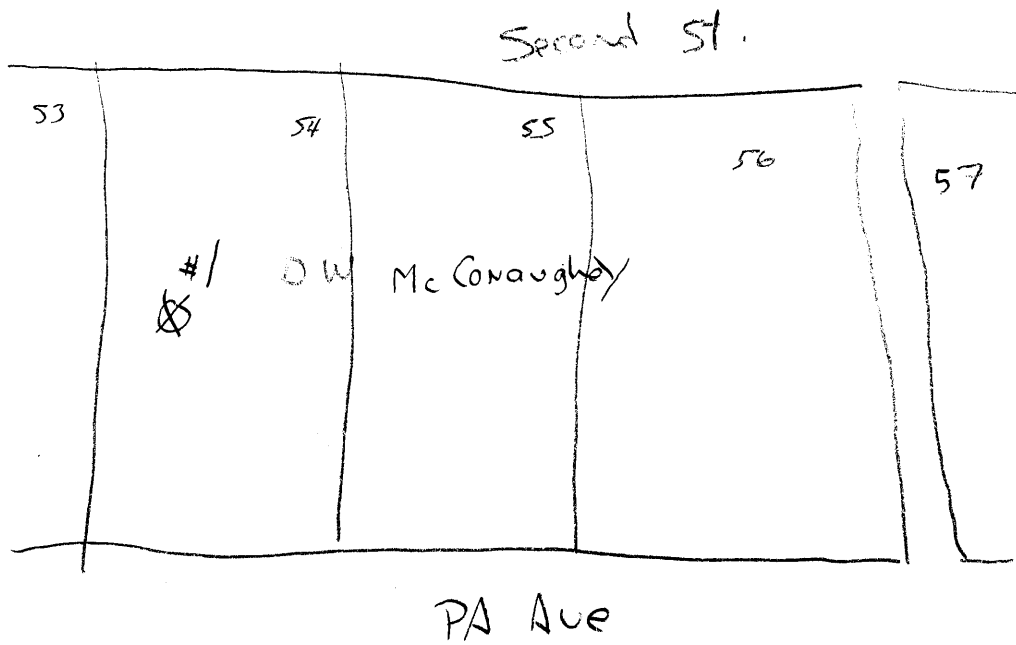
50-ft. shot with 30 qts. "dope".

Gordon shot at 2766'; bottom Gordon shot, 2810',

with 50 qts. "dope". Shot Oct. 17, 1924.

2865 ft. 8", 2" tubing, 11-9-24.

Cameron dist



30054