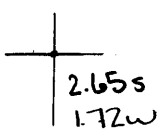


Latitude

Longitude



Topo Location

7.5' Loc. \_\_\_\_\_ 15' Loc. \_\_\_\_\_  
 \_\_\_\_\_ (calc.) \_\_\_\_\_

Company Manufact (t+H)

Farm J L Nicholas #2792

15' Quad \_\_\_\_\_  
(sec.)

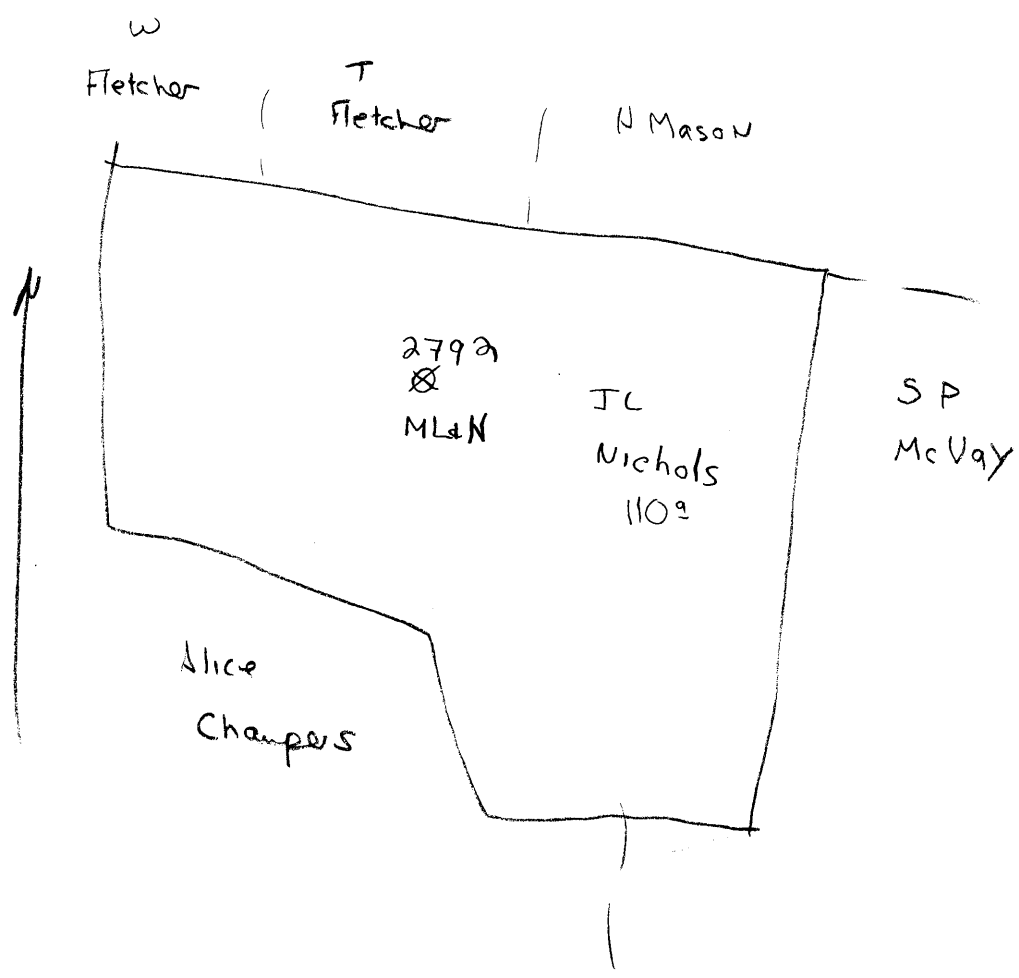
7.5' Quad Carmeson

District Carmeson

WELL LOCATION PLAT

County OSI Permit 30038

Cameron dist



Cameron District, Marshall County, W. Va.  
 Manufacturers Light & Heat Co., 800 Union Tr. Bldg., Pittsburgh, Pa.  
 On 110 acres, surface owned by Lloyd Strobe, Cameron, W. Va., and  
 mineral rights by ML&H Co., Pittsburgh, Pa.

Drilled prior to June 1, 1929.

Elevation, 1228'.

16' conductor; 10" casing, 280'; 8 $\frac{1}{2}$ ", 1158'; 6-5/8", 1922'.

Coal was encountered at 535-539, 812-820, and 1359-1361'.

Abandonment reported to Dept. of Mines August 9, 1934.

	Top.	Bottom.
Waynesburg Coal	535	539
Lime	560	728
Pittsburgh Coal	812	820
Sand	975	990
Sand	1155	1175
Little Dunkard Sand	1230	1270
Big Dunkard Sand	1285	1359
Coal	1359	1361
Salt Sand	1490	1530
Little Lime	1898	1908
Pencil Cave	1908	1918
Big Lime	1918	1970
Big Injun Sand	1970	2211
30-Ft.? Sand	2571	2593
50-Ft.? Sand (gas at 2772')	2772	2792
Gordon Sand (gas at 2845')	2834	2884
4th Sand	2904	2912
5th Sand	2941	2946
Total depth		3008