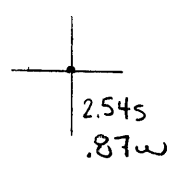


40°00'00"

Latitude

80°47'30"

Longitude



Topo Location

7.5' Loc. _____ 15' Loc. _____
 _____ (calc.) _____

Company Mary A Reilly #1

Farm Wassmuth + Callham Oil Co

15' Quad _____
(sec.)

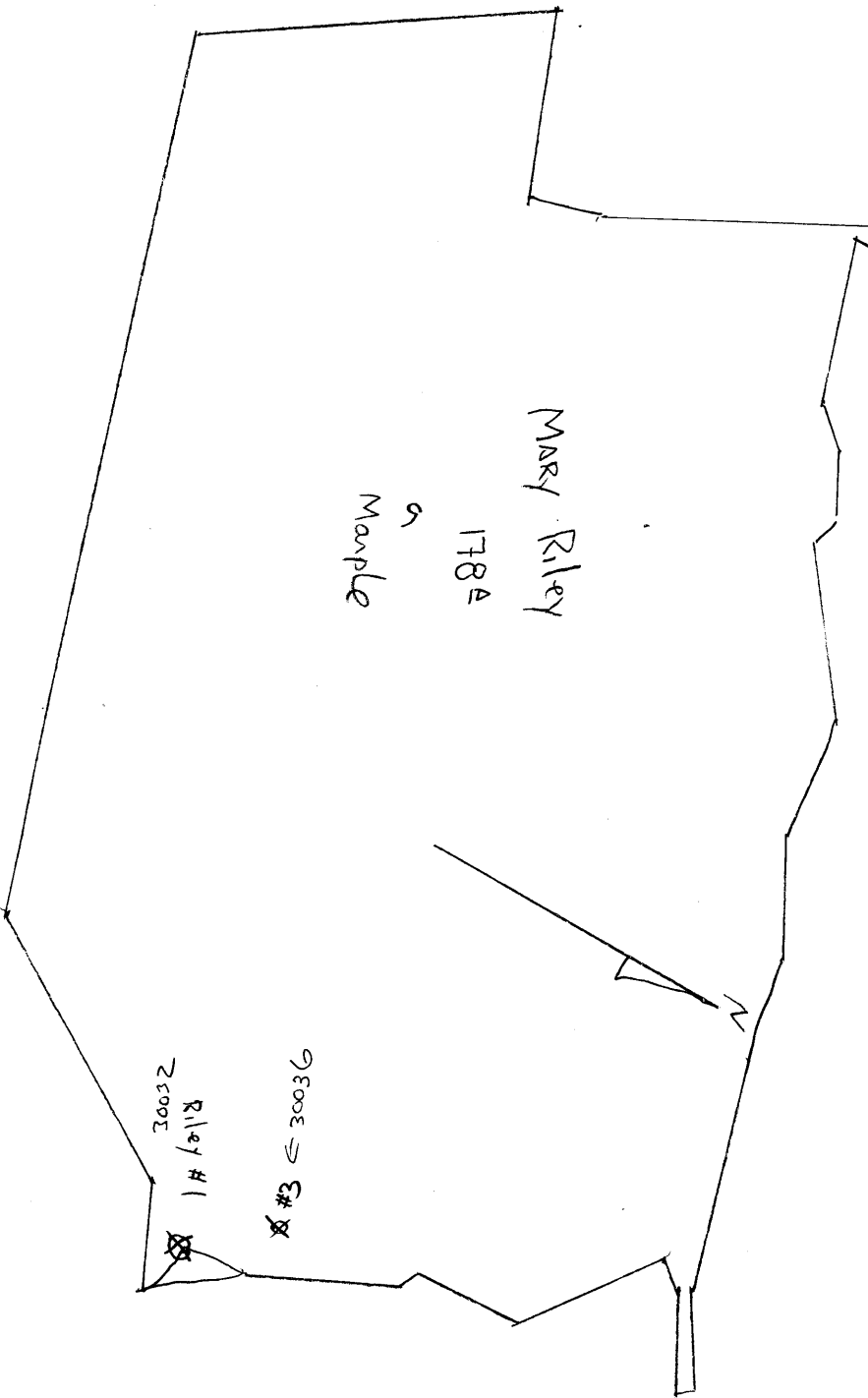
7.5' Quad Moundsville

District Union

WELL LOCATION PLAT

County 051 Permit 30032

Union - Washington dist



adjacent lease
Decem Development Co.

Union District, Marshall County, W. Va.
 Wamuth & Callhan Oil Co., Glendale, W. Va. (Geo. P. Wamuth, Pres.)
 On 178.98 acres, surface and mineral rights owned by Neilly Heirs
 (Mrs. Lemuel Harple), R.F.D., Wheeling, W. Va.

No elevation given.

1 1/2" conductor, 16"; 10" casing, 75'; 6 1/2", 925'; 4-7/8", 1445'.

Coal was encountered at 360-365' and 420-425'.

Abandonment? reported to Dept. of Mines May 9, 1934.

Well was shot at 1528-1535'.

Salt water at 1185'.

Oil well.

MARS-32-A

	Top.	Bottom.
Big Darkard Sand	920	- 955
Slate and shale	955	- 1095
Second Cow Run Sand	1095	- 1150
1st Salt Sand (water at 1185')	1165	- 1210
2nd Salt Sand	1310	- 1320
Top of Lime	1445	
Top of Big Injun Sand (oil pay, 1528-1535')	1528	
Total depth		1542

Union District, Marshall County, W. Va.

Wagmuth & Gallehen Oil Co.

On 173.98 acres, surface owned by Heilly Heirs (Mrs. Lousiel Marple), HFD, Wheeling, W. Va., and mineral rights by same.

No elevation given.

13" conductor, 16'; 10" casing, 75'; 6 1/2", 925'; 4-7/8", 1445'.

Reported to Dept. of Mines, May 9, 1934.

Well was shot at 1528-1535'.

Salt water at 1185'.

	Top.	Bottom.
Big Dunkard Sand	920	955
Slate and shale	955	1095
Second Cow Run Sand	1095	1150
1st Salt Sand (water at 1185')	1165	1210
2nd Salt Sand	1310	1320
Big Lime	1445	
Big In-jan Sand (oil pay, 1528-1535')		
Total depth		1542