



SWN PRODUCTION COMPANY, LLC



Location: Marshall County, WV
Field: Marshall
Facility: David Reinbeau MSH Pad

Slot: 1H
Well: David Reinbeau MSH 1H
Wellbore: David Reinbeau MSH 1H AWB

Plot reference wellpath is David Reinbeau MSH 1H awp 100' - 28269' Proj: 28298'	Grid System: NAD83 / UTM Zone 17 North, US feet
True vertical depths are referenced to SDC 41 (KB)	North Reference: Grid north
Reference wellpath measured depths are referenced to SDC 41 (KB)	Scale: True distance
SDC 41 (KB) to Mean Sea Level: 1276.8 feet	Coordinates are in feet referenced to Slot
Mean Sea Level to Ground level (At Slot: 1H): -1250.8 feet	Depths are in feet
Offset wellpath MDs are referenced to each path's default MD datum	Created by: tranlam on 2022-08-24; Database: WA_MPL_EASTERNUS_Defn

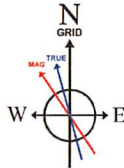
Location Information

Facility Name			Grid East (US ft)	Grid North (US ft)	Latitude	Longitude
David Reinbeau MSH Pad			1735218.668	14524246.412	39°59'33.6329"N	80°39'41.4703"W
Slot	Local N (ft)	Local E (ft)	Grid East (US ft)	Grid North (US ft)	Latitude	Longitude
1H	54.31	17.69	1735236.350	14524300.700	39°59'34.1689"N	80°39'41.2404"W
SDC 41 (KB) to Ground level (At Slot: 1H)					26ft	
Mean Sea Level to Ground level (At Slot: 1H)					-1250.8ft	
SDC 41 (KB) to Mean Sea Level					1276.8ft	

Bottom Hole Location

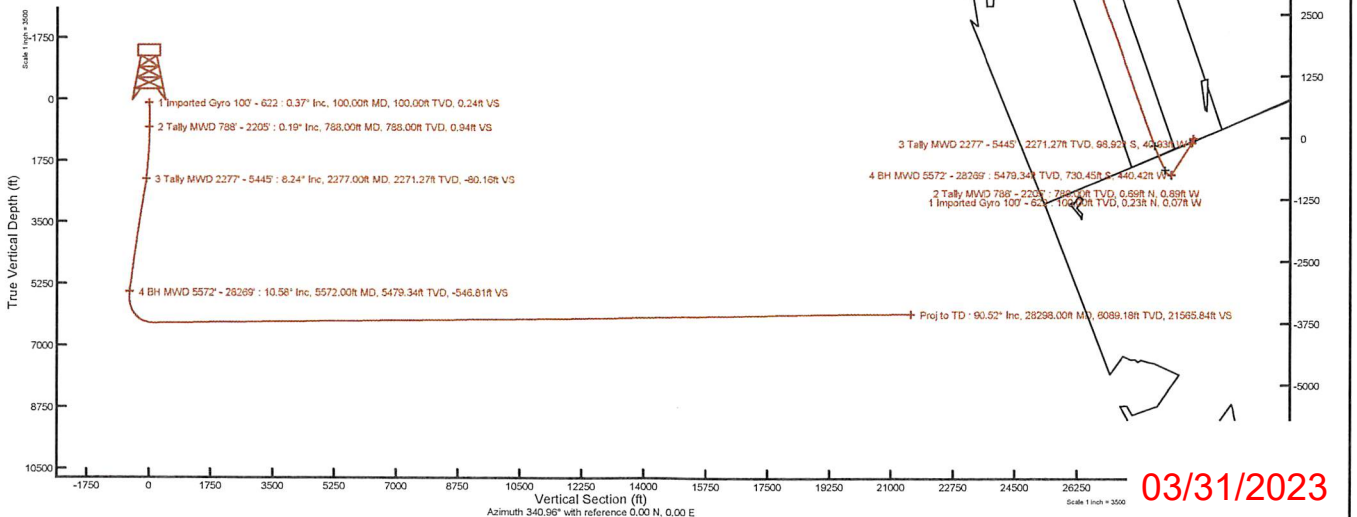
MD (ft)	Inc (°)	Az (°)	TVD (ft)	Local N (ft)	Local E (ft)	Grid East (US ft)	Grid North (US ft)	Latitude	Longitude
28298.00	90.520	341.010	6089.18	20134.48	-7764.21	1727475.18	14544427.29	40°02'53.4222"N	80°41'20.0935"W

API: 47051024380000
BH JOB: 111349238
DURATION: 08.14.2022 to 08.22.2022
RIG: SDC 41



HDGM2022v1.0 (1900.0 to 2023.0) Dip: 66.86° Field: 52148.2 nT
Magnetic North is 8.14 degrees West of True North (at 8/2/2022)
Grid North is 0.22 degrees East of True North
To correct azimuth from True to Grid subtract 0.22 degrees
To correct azimuth from Magnetic to Grid subtract 8.36 degrees

RECEIVED
Office of Oil and Gas
FEB 6 2023
WV Department of
Environmental Protection





Actual Wellpath Report

David Reinbeau MSH 1H awp 100' - 28269' Proj: 28298'
Page 1 of 13

RECEIVED
Office of Oil and Gas

FEB 6 2023

WV Department of
Environmental Protection



REFERENCE WELLPATH IDENTIFICATION			
Operator	SWN PRODUCTION COMPANY, LLC	Well	David Reinbeau MSH 1H
Field	Marshall	API	47051024380000
Facility	David Reinbeau MSH Pad	Wellbore	David Reinbeau MSH 1H AWB
Slot	1H		

REPORT SETUP INFORMATION			
Projection System	NAD83 / UTM Zone 17 North, US feet	Software System	WellArchitect® 6.0
North Reference	Grid	User	Tranlam
Scale	0.999610	Report Generated	8/24/2022 at 10:27:27 AM
Convergence at slot	0.22° East	Database	WA_MPL_EASTERNUS_Defn

WELLPATH LOCATION						
	Local coordinates		Grid coordinates		Geographic coordinates	
	North[ft]	East[ft]	Easting[US ft]	Northing[US ft]	Latitude	Longitude
Slot Location	54.31	17.69	1735236.35	14524300.70	39°59'34.1689"N	80°39'41.2404"W
Facility Reference Pt			1735218.67	14524246.41	39°59'33.6329"N	80°39'41.4703"W
Field Reference Pt			0.00	0.00	0°00'0.0000"	85°29'19.4780"W

WELLPATH DATUM			
Calculation method	Minimum curvature	SDC 41 (KB) to Facility Vertical Datum	1276.80ft
Horizontal Reference Pt	Slot	SDC 41 (KB) to Mean Sea Level	1276.80ft
Vertical Reference Pt	SDC 41 (KB)	SDC 41 (KB) to Ground Level at Slot (1H)	26.00ft
MD Reference Pt	SDC 41 (KB)	Section Origin	N 0.00, E 0.00 ft
Field Vertical Reference	Mean Sea Level	Section Azimuth	340.96°



Actual Wellpath Report

David Reinbeau MSH 1H awp 100' - 28269' Proj: 28298'
Page 2 of 13

RECEIVED
 Office of Oil and Gas
 FEB 6 2023
 WV Department of
 Environmental Protection



REFERENCE WELLPATH IDENTIFICATION

Operator	SWN PRODUCTION COMPANY, LLC	Well	David Reinbeau MSH 1H
Field	Marshall	API	47051024380000
Facility	David Reinbeau MSH Pad	Wellbore	David Reinbeau MSH 1H AWB
Slot	1H		

WELLPATH DATA (308 stations) † = interpolated, ‡ = extrapolated station

MD [ft]	Inclination [°]	Azimuth [°]	TVD [ft]	Vert Sect [ft]	North [ft]	East [ft]	Grid East [US ft]	Grid North [US ft]	Closure Dist [ft]	Closure Dir [°]	DLS [°/100ft]	Comments
0.00†	0.000	343.180	0.00	0.00	0.00	0.00	1735236.35	14524300.70	0.00	0.000	0.00	
26.00	0.000	343.180	26.00	0.00	0.00	0.00	1735236.35	14524300.70	0.00	0.000	0.00	
100.00	0.370	343.180	100.00	0.24	0.23	-0.07	1735236.28	14524300.93	0.24	343.180	0.50	1 Imported Gyro 100' - 622
200.00	0.260	340.500	200.00	0.79	0.75	-0.24	1735236.11	14524301.45	0.79	342.409	0.11	
300.00	0.110	306.590	300.00	1.09	1.02	-0.39	1735235.96	14524301.72	1.09	339.072	0.18	
400.00	0.060	247.500	400.00	1.17	1.06	-0.52	1735235.83	14524301.76	1.18	334.017	0.09	
500.00	0.060	255.470	500.00	1.17	1.03	-0.62	1735235.73	14524301.73	1.20	329.054	0.01	
600.00	0.090	257.000	600.00	1.18	1.00	-0.74	1735235.61	14524301.70	1.24	323.282	0.03	
622.00	0.070	256.790	622.00	1.19	0.99	-0.77	1735235.58	14524301.69	1.26	321.998	0.09	
788.00	0.190	183.230	788.00	0.94	0.69	-0.89	1735235.46	14524301.39	1.12	307.921	0.11	2 Tally MWD 788' - 2205'
880.00	0.310	218.800	880.00	0.67	0.34	-1.05	1735235.30	14524301.04	1.11	288.153	0.21	
970.00	0.340	239.300	969.99	0.49	0.02	-1.43	1735234.92	14524300.72	1.43	270.747	0.13	
1060.00	0.500	242.850	1059.99	0.38	-0.30	-2.01	1735234.34	14524300.40	2.03	261.611	0.18	
1153.00	1.240	194.150	1152.98	-0.52	-1.46	-2.62	1735233.73	14524299.24	3.00	240.907	1.06	
1244.00	1.800	189.730	1243.95	-2.60	-3.82	-3.10	1735233.25	14524296.88	4.92	219.070	0.63	
1335.00	2.850	189.510	1334.87	-5.84	-7.46	-3.72	1735232.63	14524293.24	8.34	206.484	1.15	
1426.00	4.200	182.390	1425.70	-10.93	-13.02	-4.23	1735232.12	14524287.68	13.69	197.996	1.56	
1517.00	4.590	194.190	1516.43	-17.08	-19.88	-5.26	1735231.09	14524280.83	20.57	194.824	1.08	
1608.00	4.870	197.500	1607.12	-23.23	-27.10	-7.32	1735229.04	14524273.61	28.07	195.110	0.43	
1699.00	5.320	197.960	1697.76	-29.70	-34.79	-9.78	1735226.58	14524265.92	36.14	195.698	0.50	
1791.00	6.050	200.320	1789.31	-36.85	-43.40	-12.78	1735223.58	14524257.32	45.24	196.406	0.83	
1882.00	6.710	205.340	1879.75	-44.36	-52.70	-16.72	1735219.64	14524248.02	55.29	197.601	0.95	
1972.00	7.160	207.240	1969.09	-52.00	-62.44	-21.54	1735214.82	14524238.29	66.05	199.030	0.56	
2063.00	7.510	209.360	2059.34	-59.86	-72.66	-27.05	1735209.31	14524228.07	77.53	200.417	0.49	
2154.00	7.940	207.120	2149.52	-68.17	-83.44	-32.83	1735203.53	14524217.29	89.67	201.476	0.58	
2205.00	8.220	208.390	2200.01	-73.07	-89.78	-36.17	1735200.20	14524210.95	96.79	201.941	0.65	
2277.00	8.240	206.610	2271.27	-80.16	-98.92	-40.93	1735195.44	14524201.81	107.06	202.475	0.35	3 Tally MWD 2277' - 5445'
2352.00	9.330	208.010	2345.39	-88.06	-109.10	-46.19	1735190.18	14524191.65	118.47	202.946	1.48	
2444.00	12.560	210.260	2435.70	-99.67	-124.33	-54.73	1735181.64	14524176.42	135.84	203.761	3.54	
2537.00	14.080	208.580	2526.20	-113.89	-142.99	-65.24	1735171.13	14524157.76	157.17	204.525	1.69	



Actual Wellpath Report

David Reinbeau MSH 1H awp 100' - 28269' Proj: 28298
Page 3 of 13

RECEIVED
 Office of Oil and Gas
 FEB 6 2023
 WV Department of
 Environmental Protection



REFERENCE WELLPATH IDENTIFICATION			
Operator	SWN PRODUCTION COMPANY, LLC	Well	David Reinbeau MSH 1H
Field	Marshall	API	47051024380000
Facility	David Reinbeau MSH Pad	Wellbore	David Reinbeau MSH 1H AWB
Slot	1H		

WELLPATH DATA (308 stations)												
MD [ft]	Inclination [°]	Azimuth [°]	TVD [ft]	Vert Sect [ft]	North [ft]	East [ft]	Grid East [US ft]	Grid North [US ft]	Closure Dist [ft]	Closure Dir [°]	DLS [°/100ft]	Comments
2629.00	14.270	206.960	2615.40	-129.31	-162.93	-75.74	1735160.64	14524137.84	179.67	204.931	0.48	
2721.00	14.710	210.670	2704.48	-144.74	-183.08	-86.83	1735149.55	14524117.69	202.63	205.375	1.12	
2813.00	14.830	215.640	2793.44	-159.10	-202.70	-99.65	1735136.74	14524098.08	225.87	206.180	1.38	
2905.00	14.920	215.690	2882.36	-172.74	-221.89	-113.42	1735122.97	14524078.90	249.20	207.075	0.10	
2999.00	14.850	212.060	2973.20	-187.30	-241.92	-126.88	1735109.52	14524058.87	273.18	207.675	0.99	
3090.00	14.870	209.980	3061.16	-202.28	-261.92	-138.90	1735097.50	14524038.88	296.47	207.938	0.59	
3180.00	14.310	214.150	3148.26	-216.51	-281.13	-150.92	1735085.49	14524019.68	319.08	208.228	1.32	
3269.00	14.290	212.880	3234.50	-229.88	-299.46	-163.05	1735073.36	14524001.36	340.97	208.568	0.35	
3361.00	14.360	210.760	3323.64	-244.25	-318.79	-175.05	1735061.36	14523982.03	363.69	208.772	0.58	
3449.00	13.890	213.020	3408.98	-257.78	-337.03	-186.39	1735050.03	14523963.80	385.14	208.944	0.82	
3541.00	13.760	211.250	3498.32	-271.56	-355.64	-198.08	1735038.34	14523945.20	407.09	209.117	0.48	
3632.00	14.040	215.720	3586.66	-284.85	-373.86	-210.14	1735026.29	14523926.99	428.87	209.340	1.22	
3725.00	13.960	213.850	3676.89	-298.13	-392.33	-222.98	1735013.46	14523908.52	451.27	209.611	0.49	
3814.00	13.700	210.950	3763.31	-311.38	-410.29	-234.38	1735002.06	14523890.57	472.51	209.737	0.83	
3903.00	13.460	207.160	3849.83	-325.32	-428.54	-244.53	1734991.92	14523872.33	493.40	209.709	1.04	
3998.00	12.110	210.140	3942.47	-339.49	-447.00	-254.58	1734981.87	14523853.88	514.41	209.663	1.58	
4090.00	12.040	214.380	4032.44	-351.52	-463.26	-264.84	1734971.61	14523837.62	533.62	209.756	0.97	
4180.00	12.950	215.130	4120.31	-363.02	-479.26	-275.95	1734960.51	14523821.63	553.02	209.932	1.03	
4272.00	13.050	211.780	4209.95	-375.61	-496.52	-287.35	1734949.11	14523804.38	573.67	210.059	0.83	
4362.00	12.930	212.540	4297.65	-388.29	-513.64	-298.12	1734938.35	14523787.26	593.89	210.131	0.23	
4455.00	13.460	214.680	4388.19	-401.16	-531.32	-309.87	1734926.60	14523769.59	615.08	210.251	0.77	
4548.00	13.580	213.600	4478.61	-414.19	-549.31	-322.07	1734914.40	14523751.60	636.77	210.384	0.30	
4639.00	12.870	210.200	4567.20	-427.29	-566.97	-333.08	1734903.40	14523733.95	657.57	210.433	1.16	
4731.00	11.880	212.490	4657.06	-439.87	-583.81	-343.32	1734893.16	14523717.12	677.28	210.459	1.20	
4821.00	11.530	212.580	4745.19	-451.22	-599.21	-353.14	1734883.35	14523701.73	695.53	210.513	0.39	
4914.00	11.060	209.220	4836.39	-462.93	-614.82	-362.50	1734873.99	14523686.12	713.73	210.524	0.87	
5005.00	11.150	218.150	4925.69	-473.51	-629.36	-372.20	1734864.30	14523671.58	731.18	210.600	1.89	
5099.00	12.570	216.740	5017.68	-484.19	-644.71	-383.93	1734852.57	14523656.25	750.37	210.774	1.54	
5191.00	13.420	216.540	5107.33	-495.85	-661.31	-396.28	1734840.23	14523639.65	770.95	210.932	0.93	
5283.00	13.170	213.840	5196.86	-508.21	-678.59	-408.47	1734828.04	14523622.38	792.04	211.045	0.73	



Actual Wellpath Report

David Reinbeau MSH 1H awp 100' - 28269' Proj: 28298'
Page 4 of 13

RECEIVED
 Office of Oil and Gas
 FEB 6 2023
 WV Department of
 Environmental Protection



REFERENCE WELLPATH IDENTIFICATION

Operator	SWN PRODUCTION COMPANY, LLC	Well	David Reinbeau MSH 1H
Field	Marshall	API	47051024380000
Facility	David Reinbeau MSH Pad	Wellbore	David Reinbeau MSH 1H AWB
Slot	1H		

WELLPATH DATA (308 stations)

MD [ft]	Inclination [°]	Azimuth [°]	TVD [ft]	Vert Sect [ft]	North [ft]	East [ft]	Grid East [US ft]	Grid North [US ft]	Closure Dist [ft]	Closure Dir [°]	DLS [°/100ft]	Comments
5375.00	12.730	210.690	5286.52	-521.09	-696.01	-419.48	1734817.03	14523604.96	812.65	211.077	0.90	
5445.00	12.270	210.870	5354.86	-530.86	-709.03	-427.23	1734809.28	14523591.95	827.80	211.072	0.66	
5572.00	10.580	212.450	5479.34	-546.81	-730.45	-440.42	1734796.11	14523570.53	852.95	211.087	1.35	4 BH MWD 5572' - 28269'
5665.00	8.250	226.160	5571.10	-554.93	-742.28	-449.81	1734786.71	14523558.71	867.94	211.215	3.46	
5756.00	8.460	269.200	5661.22	-555.58	-746.90	-461.22	1734775.31	14523554.09	877.83	211.696	6.72	
5847.00	12.690	294.570	5750.70	-546.58	-742.84	-477.02	1734759.51	14523558.16	882.81	212.707	6.81	
5939.00	17.110	313.320	5839.63	-527.60	-729.33	-496.08	1734740.46	14523571.65	882.06	214.223	7.05	
6029.00	20.960	317.530	5924.70	-501.09	-708.37	-516.59	1734719.96	14523592.61	876.73	216.102	4.54	
6120.00	26.260	326.980	6008.08	-466.58	-679.45	-538.57	1734697.99	14523621.51	867.02	218.402	7.14	
6212.00	34.400	336.040	6087.46	-420.84	-638.55	-560.27	1734676.30	14523662.40	849.49	221.264	10.13	
6304.00	43.280	333.190	6159.06	-363.58	-586.54	-585.10	1734651.48	14523714.39	828.47	224.929	9.84	
6396.00	50.600	332.700	6221.83	-297.07	-526.73	-615.66	1734620.93	14523774.18	810.24	229.451	7.97	
6488.00	59.540	334.950	6274.46	-222.30	-459.08	-648.83	1734587.78	14523841.80	794.81	234.719	9.92	
6579.00	67.820	336.590	6314.77	-141.14	-384.75	-682.23	1734554.39	14523916.10	783.24	240.579	9.24	
6672.00	74.140	338.160	6345.07	-53.43	-303.63	-716.02	1734520.61	14523997.19	777.73	247.020	6.98	
6763.00	82.940	340.070	6363.13	35.62	-220.38	-747.76	1734488.89	14524080.41	779.55	253.579	9.89	
6856.00	90.090	339.350	6368.78	128.36	-133.37	-779.93	1734456.73	14524167.38	791.25	260.296	7.73	
6949.00	90.740	339.190	6368.11	221.32	-46.39	-812.84	1734423.82	14524254.32	814.17	266.733	0.72	
7041.00	90.620	339.640	6367.01	313.28	39.73	-845.19	1734391.49	14524340.41	846.12	272.691	0.51	
7133.00	90.150	340.390	6366.40	405.26	126.18	-876.63	1734360.06	14524426.83	885.67	278.191	0.96	
7224.00	90.800	339.910	6365.64	496.25	211.77	-907.53	1734329.18	14524512.39	931.91	283.135	0.89	
7316.00	90.650	340.340	6364.48	588.23	298.29	-938.80	1734297.91	14524598.87	985.05	287.627	0.49	
7407.00	90.520	340.470	6363.55	679.22	384.01	-969.32	1734267.41	14524684.56	1042.62	291.612	0.20	
7497.00	90.710	340.710	6362.58	769.21	468.89	-999.23	1734237.51	14524769.41	1103.77	295.138	0.34	
7588.00	90.830	340.550	6361.36	860.20	554.73	-1029.41	1734207.35	14524855.21	1169.36	298.320	0.22	
7681.00	90.680	340.920	6360.13	953.20	642.52	-1060.09	1734176.68	14524942.96	1239.60	301.220	0.43	
7772.00	90.710	340.470	6359.03	1044.19	728.39	-1090.17	1734146.61	14525028.81	1311.12	303.749	0.50	
7863.00	91.020	340.560	6357.66	1135.17	814.17	-1120.52	1734116.27	14525114.55	1385.08	306.002	0.35	
7953.00	90.890	340.550	6356.16	1225.16	899.03	-1150.48	1734086.32	14525199.37	1460.09	308.005	0.14	
8045.00	90.950	341.230	6354.68	1317.15	985.94	-1180.59	1734056.22	14525286.26	1538.14	309.866	0.74	



Actual Wellpath Report

David Reinbeau MSH 1H awp 100' - 28269' Proj: 28298'
Page 5 of 13

RECEIVED
Office of Oil and Gas

FEB 6 2023

WV Department of
Environmental Protection



REFERENCE WELLPATH IDENTIFICATION

Operator	SWN PRODUCTION COMPANY, LLC	Well	David Reinbeau MSH 1H
Field	Marshall	API	47051024380000
Facility	David Reinbeau MSH Pad	Wellbore	David Reinbeau MSH 1H AWB
Slot	1H		

WELLPATH DATA (308 stations)

MD [ft]	Inclination [°]	Azimuth [°]	TVD [ft]	Vert Sect [ft]	North [ft]	East [ft]	Grid East [US ft]	Grid North [US ft]	Closure Dist [ft]	Closure Dir [°]	DLS [°/100ft]	Comments
8137.00	90.580	340.640	6353.45	1409.14	1072.89	-1210.64	1734026.18	14525373.17	1617.64	311.548	0.76	
8229.00	90.860	341.430	6352.30	1501.13	1159.89	-1240.54	1733996.30	14525460.13	1698.32	313.076	0.91	
8320.00	90.580	340.500	6351.15	1592.12	1245.90	-1270.21	1733966.63	14525546.12	1779.25	314.446	1.07	
8412.00	90.550	339.950	6350.24	1684.11	1332.47	-1301.34	1733935.52	14525632.65	1862.52	315.677	0.60	
8504.00	90.280	339.950	6349.58	1776.09	1418.90	-1332.88	1733903.99	14525719.04	1946.75	316.790	0.29	
8595.00	90.310	340.580	6349.11	1867.08	1504.55	-1363.61	1733873.28	14525804.66	2030.54	317.813	0.69	
8688.00	91.260	341.730	6347.84	1960.07	1592.55	-1393.64	1733843.25	14525892.63	2116.24	318.811	1.60	
8780.00	90.430	340.630	6346.48	2052.06	1679.62	-1423.32	1733813.59	14525979.67	2201.58	319.722	1.50	
8873.00	90.490	340.650	6345.73	2145.06	1767.36	-1454.15	1733782.77	14526067.37	2288.69	320.553	0.07	
8964.00	90.740	340.160	6344.76	2236.05	1853.09	-1484.66	1733752.27	14526153.06	2374.48	321.299	0.60	
9056.00	91.450	342.130	6343.00	2328.02	1940.13	-1514.39	1733722.55	14526240.07	2461.19	322.026	2.28	
9147.00	90.280	341.420	6341.62	2419.00	2026.55	-1542.85	1733694.11	14526326.46	2547.02	322.717	1.50	
9240.00	90.060	339.720	6341.35	2512.00	2114.25	-1573.78	1733663.19	14526414.12	2635.69	323.337	1.84	
9333.00	90.580	339.440	6340.83	2604.97	2201.41	-1606.23	1733630.75	14526501.24	2725.10	323.884	0.64	
9425.00	91.390	341.180	6339.25	2696.94	2288.01	-1637.22	1733599.77	14526587.81	2813.45	324.414	2.09	
9516.00	90.680	337.400	6337.60	2787.87	2373.10	-1669.39	1733567.61	14526672.87	2901.46	324.875	4.23	
9609.00	91.080	338.300	6336.17	2880.72	2459.23	-1704.45	1733532.57	14526758.96	2992.15	325.275	1.06	
9701.00	90.680	340.280	6334.76	2972.67	2545.27	-1736.98	1733500.05	14526844.97	3081.47	325.689	2.20	
9793.00	90.800	342.750	6333.57	3064.65	2632.51	-1766.14	1733470.90	14526932.17	3170.07	326.142	2.69	
9886.00	90.280	341.270	6332.70	3157.63	2720.95	-1794.86	1733442.19	14527020.59	3259.62	326.589	1.69	
9978.00	91.170	341.840	6331.53	3249.61	2808.22	-1823.97	1733413.10	14527107.82	3348.57	326.996	1.15	
10069.00	90.770	343.850	6329.99	3340.55	2895.15	-1850.81	1733386.27	14527194.72	3436.19	327.410	2.25	
10162.00	90.250	340.900	6329.16	3433.50	2983.77	-1878.96	1733358.13	14527283.30	3526.10	327.800	3.22	
10253.00	90.950	340.190	6328.21	3524.49	3069.57	-1909.27	1733327.83	14527369.07	3614.91	328.118	1.10	
10344.00	90.520	341.390	6327.04	3615.49	3155.50	-1939.21	1733297.90	14527454.96	3703.74	328.427	1.40	
10434.00	90.000	341.180	6326.63	3705.48	3240.74	-1968.08	1733269.04	14527540.17	3791.53	328.730	0.62	
10525.00	89.780	340.870	6326.81	3796.48	3326.79	-1997.67	1733239.46	14527626.19	3880.49	329.016	0.42	
10617.00	91.140	341.060	6326.07	3888.48	3413.75	-2027.68	1733209.47	14527713.12	3970.54	329.291	1.49	
10707.00	90.680	340.950	6324.64	3978.47	3498.84	-2056.97	1733180.19	14527798.17	4058.70	329.549	0.53	
10795.00	90.310	340.910	6323.88	4066.46	3582.01	-2085.72	1733151.45	14527881.31	4145.00	329.789	0.42	



Actual Wellpath Report

David Reinbeau MSH 1H awp 100' - 28269' Proj: 28298'
Page 6 of 13

RECEIVED
Office of Oil and Gas

FEB 6 2023

WV Department of
Environmental Protection



REFERENCE WELLPATH IDENTIFICATION

Operator	SWN PRODUCTION COMPANY, LLC	Well	David Reinbeau MSH 1H
Field	Marshall	API	47051024380000
Facility	David Reinbeau MSH Pad	Wellbore	David Reinbeau MSH 1H AWB
Slot	1H		

WELLPATH DATA (308 stations)

MD [ft]	Inclination [°]	Azimuth [°]	TVD [ft]	Vert Sect [ft]	North [ft]	East [ft]	Grid East [US ft]	Grid North [US ft]	Closure Dist [ft]	Closure Dir [°]	DLS [°/100ft]	Comments
10888.00	90.340	340.810	6323.35	4159.46	3669.87	-2116.21	1733120.97	14527969.13	4236.30	330.030	0.11	
10980.00	90.400	340.550	6322.76	4251.46	3756.69	-2146.65	1733090.55	14528055.91	4326.75	330.255	0.29	
11070.00	90.460	340.650	6322.08	4341.45	3841.57	-2176.54	1733060.66	14528140.77	4415.31	330.465	0.13	
11157.00	90.770	340.950	6321.15	4428.45	3923.73	-2205.15	1733032.07	14528222.89	4500.92	330.664	0.50	
11248.00	90.590	341.100	6320.07	4519.44	4009.78	-2234.74	1733002.49	14528308.91	4590.46	330.868	0.26	
11339.00	90.650	340.590	6319.09	4610.43	4095.73	-2264.59	1732972.64	14528394.83	4680.11	331.061	0.56	
11430.00	90.830	340.690	6317.91	4701.43	4181.58	-2294.76	1732942.49	14528480.64	4769.86	331.243	0.23	
11521.00	91.600	341.200	6315.98	4792.40	4267.57	-2324.46	1732912.80	14528566.60	4859.56	331.424	1.01	
11614.00	90.520	342.200	6314.26	4885.38	4355.85	-2353.65	1732883.62	14528654.85	4951.08	331.616	1.58	
11706.00	90.150	340.650	6313.72	4977.37	4443.06	-2382.96	1732854.32	14528742.02	5041.75	331.794	1.73	
11794.00	90.580	340.420	6313.16	5065.37	4526.03	-2412.28	1732825.01	14528824.95	5128.74	331.943	0.55	
11884.00	90.620	341.170	6312.22	5155.36	4611.01	-2441.89	1732795.42	14528909.91	5217.68	332.095	0.83	
11976.00	90.650	341.540	6311.20	5247.35	4698.18	-2471.30	1732766.02	14528997.04	5308.50	332.255	0.40	
12066.00	90.180	341.430	6310.55	5337.35	4783.52	-2499.88	1732737.45	14529082.34	5397.35	332.408	0.54	
12158.00	90.250	340.650	6310.20	5429.34	4870.52	-2529.77	1732707.57	14529169.32	5488.33	332.552	0.85	
12249.00	90.710	340.830	6309.44	5520.34	4956.43	-2559.78	1732677.57	14529255.19	5578.41	332.686	0.54	
12340.00	90.770	341.440	6308.26	5611.33	5042.53	-2589.20	1732648.16	14529341.26	5668.43	332.821	0.67	
12432.00	90.460	341.270	6307.28	5703.32	5129.70	-2618.62	1732618.76	14529428.39	5759.42	332.957	0.38	
12525.00	90.800	341.530	6306.25	5796.32	5217.83	-2648.28	1732589.11	14529516.49	5851.42	333.090	0.46	
12616.00	90.770	341.340	6305.01	5887.30	5304.09	-2677.25	1732560.15	14529602.71	5941.47	333.218	0.21	
12708.00	90.680	342.510	6303.84	5979.28	5391.54	-2705.79	1732531.62	14529690.13	6032.41	333.350	1.28	
12799.00	90.890	341.740	6302.60	6070.25	5478.14	-2733.72	1732503.70	14529776.70	6122.36	333.480	0.88	
12891.00	90.680	341.660	6301.34	6162.24	5565.48	-2762.60	1732474.83	14529864.00	6213.42	333.601	0.24	
12983.00	90.680	341.670	6300.24	6254.22	5652.80	-2791.54	1732445.90	14529951.29	6304.51	333.718	0.01	
13074.00	90.430	340.680	6299.36	6345.22	5738.93	-2820.90	1732416.55	14530037.38	6394.75	333.824	1.12	
13166.00	90.400	340.530	6298.70	6437.21	5825.71	-2851.45	1732386.01	14530124.13	6486.11	333.920	0.17	
13258.00	90.740	341.770	6297.78	6529.21	5912.77	-2881.18	1732356.30	14530211.15	6577.38	334.021	1.40	
13350.00	90.770	341.560	6296.57	6621.19	6000.09	-2910.11	1732327.38	14530298.44	6668.57	334.126	0.23	
13442.00	90.770	341.100	6295.33	6713.18	6087.24	-2939.56	1732297.94	14530385.56	6759.85	334.224	0.50	
13533.00	90.520	341.320	6294.31	6804.17	6173.38	-2968.87	1732268.64	14530471.67	6850.17	334.316	0.37	



Actual Wellpath Report

David Reinbeau MSH 1H awp 100' - 28269' Proj: 28298'
Page 7 of 13

RECEIVED
Office of Oil and Gas

FEB 6 2023

WV Department of
Environmental Protection



REFERENCE WELLPATH IDENTIFICATION			
Operator	SWN PRODUCTION COMPANY, LLC	Well	David Reinbeau MSH 1H
Field	Marshall	API	47051024380000
Facility	David Reinbeau MSH Pad	Wellbore	David Reinbeau MSH 1H AWB
Slot	1H		

WELLPATH DATA (308 stations)												
MD [ft]	Inclination [°]	Azimuth [°]	TVD [ft]	Vert Sect [ft]	North [ft]	East [ft]	Grid East [US ft]	Grid North [US ft]	Closure Dist [ft]	Closure Dir [°]	DLS [°/100ft]	Comments
13625.00	90.650	341.140	6293.37	6896.17	6260.49	-2998.47	1732239.05	14530558.73	6941.51	334.408	0.24	
13715.00	90.620	341.380	6292.37	6986.16	6345.71	-3027.38	1732210.15	14530643.92	7030.87	334.495	0.27	
13807.00	90.650	340.610	6291.35	7078.16	6432.69	-3057.34	1732180.21	14530730.87	7122.28	334.579	0.84	
13899.00	90.280	341.400	6290.61	7170.15	6519.68	-3087.29	1732150.27	14530817.82	7213.70	334.661	0.95	
13989.00	90.150	340.800	6290.27	7260.15	6604.82	-3116.44	1732121.13	14530902.94	7303.14	334.740	0.68	
14080.00	90.340	340.390	6289.88	7351.15	6690.65	-3146.67	1732090.91	14530988.73	7393.67	334.812	0.50	
14170.00	91.020	341.950	6288.81	7441.14	6775.83	-3175.72	1732061.88	14531073.87	7483.11	334.888	1.89	
14261.00	90.060	341.740	6287.95	7532.12	6862.29	-3204.07	1732033.53	14531160.30	7573.45	334.972	1.08	
14352.00	90.770	340.440	6287.29	7623.12	6948.38	-3233.56	1732004.06	14531246.35	7663.93	335.044	1.63	
14442.00	90.710	340.810	6286.13	7713.11	7033.27	-3263.42	1731974.21	14531331.22	7753.50	335.109	0.42	
14533.00	90.490	341.280	6285.18	7804.10	7119.33	-3292.97	1731944.67	14531417.24	7844.01	335.178	0.57	
14626.00	90.400	341.330	6284.46	7897.10	7207.42	-3322.78	1731914.87	14531505.30	7936.49	335.249	0.11	
14719.00	90.370	340.100	6283.83	7990.09	7295.20	-3353.49	1731884.17	14531593.04	8029.06	335.312	1.32	
14809.00	91.080	341.220	6282.69	8080.08	7380.11	-3383.30	1731854.38	14531677.92	8118.67	335.372	1.47	
14901.00	91.020	341.530	6281.01	8172.06	7467.28	-3412.67	1731825.01	14531765.05	8210.15	335.439	0.34	
14992.00	90.740	339.390	6279.61	8263.04	7553.02	-3443.11	1731794.59	14531850.76	8300.79	335.494	2.37	
15083.00	90.370	339.970	6278.73	8354.02	7638.36	-3474.70	1731763.01	14531936.06	8391.55	335.539	0.76	
15173.00	90.920	341.060	6277.71	8444.01	7723.19	-3504.72	1731733.00	14532020.87	8481.20	335.592	1.36	
15265.00	90.950	341.740	6276.21	8535.99	7810.38	-3534.06	1731703.67	14532108.02	8572.72	335.654	0.74	
15355.00	90.980	340.240	6274.70	8625.98	7895.45	-3563.37	1731674.37	14532193.06	8662.32	335.709	1.67	
15446.00	91.170	341.300	6272.99	8716.96	7981.36	-3593.34	1731644.42	14532278.93	8752.95	335.762	1.18	
15538.00	91.020	340.820	6271.23	8808.94	8068.36	-3623.20	1731614.57	14532365.90	8844.55	335.817	0.55	
15628.00	90.620	339.890	6269.94	8898.92	8153.11	-3653.45	1731584.33	14532450.62	8934.26	335.863	1.12	
15720.00	90.680	340.860	6268.90	8990.91	8239.76	-3684.35	1731553.45	14532537.24	9025.97	335.909	1.06	
15809.00	91.260	340.650	6267.39	9079.90	8323.78	-3713.68	1731524.13	14532621.22	9114.64	335.956	0.69	
15902.00	90.990	341.280	6265.57	9172.88	8411.68	-3744.00	1731493.81	14532709.08	9207.27	336.006	0.74	
15994.00	90.950	339.610	6264.01	9264.86	8498.35	-3774.79	1731463.04	14532795.72	9298.98	336.050	1.82	
16088.00	91.260	341.270	6262.20	9358.84	8586.91	-3806.25	1731431.59	14532884.25	9392.69	336.094	1.80	
16182.00	90.220	340.230	6260.98	9452.82	8675.64	-3837.24	1731400.61	14532972.95	9486.37	336.140	1.56	
16277.00	89.910	340.910	6260.87	9547.82	8765.23	-3868.84	1731369.02	14533062.50	9581.09	336.184	0.79	



Actual Wellpath Report

David Reinbeau MSH 1H awp 100' - 28269' Proj: 28298'
Page 8 of 13

RECEIVED
 Office of Oil and Gas
 FEB 6 2023
 WV Department of
 Environmental Protection



REFERENCE WELLPATH IDENTIFICATION

Operator	SWN PRODUCTION COMPANY, LLC	Well	David Reinbeau MSH 1H
Field	Marshall	API	47051024380000
Facility	David Reinbeau MSH Pad	Wellbore	David Reinbeau MSH 1H AWB
Slot	1H		

WELLPATH DATA (308 stations)

MD [ft]	Inclination [°]	Azimuth [°]	TVD [ft]	Vert Sect [ft]	North [ft]	East [ft]	Grid East [US ft]	Grid North [US ft]	Closure Dist [ft]	Closure Dir [°]	DLS [°/100ft]	Comments
16372.00	89.690	340.260	6261.21	9642.82	8854.83	-3900.42	1731337.46	14533152.06	9675.81	336.227	0.72	
16466.00	90.000	340.450	6261.46	9736.81	8943.36	-3932.02	1731305.87	14533240.55	9769.57	336.267	0.39	
16560.00	90.250	340.730	6261.26	9830.81	9032.01	-3963.26	1731274.64	14533329.18	9863.30	336.308	0.40	
16655.00	90.340	341.040	6260.77	9925.81	9121.78	-3994.37	1731243.54	14533418.90	9958.00	336.352	0.34	
16749.00	90.280	341.070	6260.26	10019.81	9210.68	-4024.89	1731213.04	14533507.77	10051.69	336.396	0.07	
16844.00	90.620	341.810	6259.51	10114.80	9300.74	-4055.13	1731182.81	14533597.79	10146.32	336.443	0.86	
16938.00	90.400	341.620	6258.67	10208.79	9389.99	-4084.62	1731153.33	14533687.01	10239.92	336.491	0.31	
17032.00	90.550	342.110	6257.90	10302.77	9479.31	-4113.87	1731124.09	14533776.30	10333.51	336.540	0.55	
17127.00	90.860	342.130	6256.73	10397.75	9569.72	-4143.04	1731094.93	14533866.67	10428.05	336.591	0.33	
17221.00	90.400	341.060	6255.69	10491.73	9658.90	-4172.72	1731065.27	14533955.82	10521.69	336.635	1.24	
17315.00	90.460	340.990	6254.99	10585.73	9747.79	-4203.28	1731034.72	14534044.68	10615.42	336.674	0.10	
17410.00	90.620	341.220	6254.09	10680.73	9837.67	-4234.04	1731003.97	14534134.52	10710.13	336.713	0.29	
17505.00	90.550	341.330	6253.12	10775.72	9927.64	-4264.54	1730973.48	14534224.45	10804.83	336.753	0.14	
17599.00	90.710	340.950	6252.09	10869.71	10016.59	-4294.92	1730943.11	14534313.36	10898.55	336.791	0.44	
17693.00	90.680	340.730	6250.95	10963.71	10105.37	-4325.77	1730912.27	14534402.11	10992.31	336.826	0.24	
17788.00	90.650	340.960	6249.85	11058.70	10195.11	-4356.94	1730881.12	14534491.81	11087.07	336.860	0.24	
17883.00	90.680	341.400	6248.74	11153.69	10285.02	-4387.59	1730850.48	14534581.69	11181.80	336.897	0.46	
17977.00	90.580	341.020	6247.71	11247.69	10374.01	-4417.86	1730820.22	14534670.64	11275.53	336.933	0.42	
18071.00	90.620	340.760	6246.73	11341.68	10462.82	-4448.63	1730789.46	14534759.42	11369.30	336.966	0.28	
18166.00	90.740	340.850	6245.60	11436.67	10552.53	-4479.87	1730758.24	14534849.10	11464.08	336.997	0.16	
18261.00	90.650	340.800	6244.45	11531.67	10642.26	-4511.07	1730727.05	14534938.79	11558.86	337.029	0.11	
18355.00	90.550	341.010	6243.46	11625.66	10731.08	-4541.82	1730696.31	14535027.57	11652.64	337.060	0.25	
18450.00	90.710	340.790	6242.42	11720.65	10820.84	-4572.90	1730665.24	14535117.30	11747.43	337.091	0.29	
18544.00	90.740	340.780	6241.23	11814.65	10909.60	-4603.83	1730634.32	14535206.03	11841.23	337.120	0.03	
18639.00	90.800	341.320	6239.95	11909.64	10999.44	-4634.68	1730603.48	14535295.83	11936.00	337.152	0.57	
18733.00	90.830	341.030	6238.61	12003.63	11088.40	-4665.01	1730573.17	14535384.76	12029.76	337.183	0.31	
18827.00	91.050	341.680	6237.07	12097.61	11177.46	-4695.06	1730543.13	14535473.78	12123.50	337.215	0.73	
18922.00	91.050	341.730	6235.33	12192.59	11267.64	-4724.87	1730513.33	14535563.93	12218.19	337.250	0.05	
19016.00	90.520	341.030	6234.04	12286.58	11356.71	-4754.88	1730483.33	14535652.96	12311.94	337.282	0.93	
19110.00	90.710	341.000	6233.03	12380.57	11445.59	-4785.46	1730452.76	14535741.81	12405.74	337.310	0.20	



Actual Wellpath Report

David Reinbeau MSH 1H awp 100' - 28269' Proj: 28298'
Page 9 of 13

RECEIVED
 Office of Oil and Gas
 FEB 6 2023
 WV Department of
 Environmental Protection



REFERENCE WELLPATH IDENTIFICATION			
Operator	SWN PRODUCTION COMPANY, LLC	Well	David Reinbeau MSH 1H
Field	Marshall	API	47051024380000
Facility	David Reinbeau MSH Pad	Wellbore	David Reinbeau MSH 1H AWB
Slot	1H		

WELLPATH DATA (308 stations)												
MD [ft]	Inclination [°]	Azimuth [°]	TVD [ft]	Vert Sect [ft]	North [ft]	East [ft]	Grid East [US ft]	Grid North [US ft]	Closure Dist [ft]	Closure Dir [°]	DLS [°/100ft]	Comments
19205.00	90.950	341.750	6231.66	12475.56	11535.61	-4815.80	1730422.44	14535831.79	12500.49	337.341	0.83	
19299.00	90.580	340.660	6230.40	12569.55	11624.59	-4846.08	1730392.17	14535920.73	12594.27	337.370	1.22	
19393.00	90.860	341.200	6229.22	12663.54	11713.42	-4876.79	1730361.47	14536009.53	12688.08	337.396	0.65	
19487.00	90.680	341.500	6227.96	12757.53	11802.48	-4906.85	1730331.42	14536098.55	12781.85	337.425	0.37	
19581.00	90.770	341.670	6226.77	12851.51	11891.66	-4936.54	1730301.74	14536187.70	12875.59	337.455	0.20	
19676.00	90.460	340.510	6225.75	12946.51	11981.52	-4967.33	1730270.97	14536277.53	12970.40	337.482	1.26	
19770.00	90.710	341.010	6224.79	13040.50	12070.27	-4998.30	1730240.01	14536366.24	13064.24	337.506	0.59	
19865.00	90.650	341.270	6223.66	13135.49	12160.16	-5029.01	1730209.31	14536456.10	13159.04	337.532	0.28	
19959.00	90.950	341.280	6222.35	13229.48	12249.18	-5059.18	1730179.15	14536545.08	13252.83	337.558	0.32	
20053.00	90.860	340.810	6220.86	13323.47	12338.07	-5089.71	1730148.63	14536633.93	13346.65	337.583	0.51	
20148.00	90.860	341.300	6219.44	13418.46	12427.91	-5120.55	1730117.81	14536723.74	13441.46	337.607	0.52	
20243.00	90.770	341.290	6218.09	13513.45	12517.88	-5151.01	1730087.36	14536813.68	13536.26	337.633	0.10	
20337.00	90.950	341.630	6216.68	13607.43	12606.99	-5180.90	1730057.48	14536902.76	13630.04	337.660	0.41	
20431.00	90.990	340.890	6215.09	13701.42	12696.00	-5211.09	1730027.30	14536991.72	13723.84	337.684	0.79	
20526.00	90.950	340.950	6213.48	13796.40	12785.77	-5242.14	1729996.26	14537081.46	13818.68	337.706	0.08	
20621.00	90.860	341.560	6211.98	13891.39	12875.72	-5272.67	1729965.75	14537171.37	13913.49	337.731	0.65	
20715.00	90.770	341.100	6210.64	13985.38	12964.76	-5302.76	1729935.67	14537260.38	14007.29	337.755	0.50	
20809.00	91.020	341.230	6209.17	14079.37	13053.72	-5333.10	1729905.34	14537349.30	14101.11	337.778	0.30	
20904.00	91.380	341.220	6207.18	14174.35	13143.64	-5363.67	1729874.78	14537439.19	14195.92	337.801	0.38	
20998.00	91.230	341.070	6205.04	14268.32	13232.57	-5394.04	1729844.42	14537528.09	14289.74	337.823	0.23	
21093.00	91.350	340.830	6202.90	14363.30	13322.35	-5425.04	1729813.44	14537617.83	14384.57	337.843	0.28	
21187.00	91.230	340.980	6200.79	14457.27	13411.15	-5455.78	1729782.71	14537706.60	14478.42	337.863	0.20	
21281.00	91.450	341.100	6198.59	14551.25	13500.03	-5486.31	1729752.18	14537795.44	14572.25	337.884	0.27	
21376.00	91.510	340.790	6196.13	14646.21	13589.79	-5517.32	1729721.19	14537885.17	14667.08	337.903	0.33	
21470.00	91.540	340.400	6193.63	14740.18	13678.42	-5548.54	1729689.98	14537973.76	14760.95	337.920	0.42	
21564.00	91.140	340.620	6191.43	14834.15	13767.01	-5579.89	1729658.64	14538062.32	14854.82	337.937	0.49	
21658.00	91.420	340.950	6189.33	14928.13	13855.75	-5610.82	1729627.73	14538151.02	14948.68	337.955	0.46	
21752.00	91.140	341.210	6187.23	15022.10	13944.65	-5641.29	1729597.27	14538239.89	15042.52	337.974	0.41	
21846.00	91.260	341.090	6185.27	15116.08	14033.59	-5671.66	1729566.91	14538328.79	15136.36	337.994	0.18	
21941.00	91.420	340.820	6183.04	15211.06	14123.37	-5702.65	1729535.94	14538418.53	15231.21	338.012	0.33	



Actual Wellpath Report

David Reinbeau MSH 1H awp 100' - 28269' Proj: 28298'
Page 10 of 13

RECEIVED
 Office of Oil and Gas
 FEB 6 2023
 WV Department of
 Environmental Protection



REFERENCE WELLPATH IDENTIFICATION			
Operator	SWN PRODUCTION COMPANY, LLC	Well	David Reinbeau MSH 1H
Field	Marshall	API	47051024380000
Facility	David Reinbeau MSH Pad	Wellbore	David Reinbeau MSH 1H AWB
Slot	1H		

WELLPATH DATA (308 stations)												
MD [ft]	Inclination [°]	Azimuth [°]	TVD [ft]	Vert Sect [ft]	North [ft]	East [ft]	Grid East [US ft]	Grid North [US ft]	Closure Dist [ft]	Closure Dir [°]	DLS [°/100ft]	Comments
22036.00	91.170	340.560	6180.90	15306.03	14213.00	-5734.05	1729504.54	14538508.13	15326.08	338.029	0.38	
22130.00	91.260	340.700	6178.90	15400.01	14301.66	-5765.22	1729473.38	14538596.76	15419.96	338.045	0.18	
22225.00	91.420	340.450	6176.68	15494.98	14391.22	-5796.81	1729441.81	14538686.29	15514.84	338.060	0.31	
22319.00	91.750	340.900	6174.08	15588.94	14479.89	-5827.91	1729410.73	14538774.92	15608.71	338.076	0.59	
22415.00	91.480	341.240	6171.38	15684.90	14570.67	-5859.04	1729379.61	14538865.66	15704.54	338.094	0.45	
22509.00	91.350	340.450	6169.06	15778.87	14659.43	-5889.87	1729348.79	14538954.39	15798.40	338.111	0.85	
22604.00	91.780	341.500	6166.46	15873.84	14749.21	-5920.83	1729317.84	14539044.13	15893.25	338.128	1.19	
22698.00	91.080	340.980	6164.12	15967.80	14838.19	-5951.05	1729287.63	14539133.07	15987.08	338.146	0.93	
22793.00	90.310	340.880	6162.96	16062.80	14927.97	-5982.08	1729256.61	14539222.82	16081.96	338.163	0.82	
22887.00	90.800	341.220	6162.05	16156.79	15016.87	-6012.61	1729226.10	14539311.68	16175.84	338.179	0.63	
22982.00	90.400	340.660	6161.06	16251.79	15106.65	-6043.63	1729195.09	14539401.44	16270.72	338.195	0.72	
23077.00	90.890	341.160	6159.99	16346.78	15196.42	-6074.70	1729164.03	14539491.17	16365.61	338.211	0.74	
23172.00	90.620	338.340	6158.74	16441.74	15285.53	-6107.57	1729131.17	14539580.25	16460.56	338.220	2.98	
23266.00	91.020	337.130	6157.39	16535.58	15372.51	-6143.18	1729095.57	14539667.19	16554.54	338.217	1.36	
23361.00	90.950	337.550	6155.76	16630.38	15460.17	-6179.78	1729058.99	14539754.81	16649.52	338.212	0.45	
23455.00	91.020	336.830	6154.14	16724.16	15546.80	-6216.21	1729022.57	14539841.41	16743.49	338.207	0.77	
23550.00	91.290	338.850	6152.23	16818.99	15634.76	-6252.04	1728986.76	14539929.34	16838.46	338.204	2.14	
23644.00	91.390	341.540	6150.03	16912.95	15723.17	-6283.88	1728954.94	14540017.71	16932.37	338.216	2.86	
23739.00	90.950	343.220	6148.09	17007.90	15813.69	-6312.63	1728926.20	14540108.20	17027.10	338.239	1.83	
23833.00	91.080	343.370	6146.42	17101.81	15903.71	-6339.64	1728899.19	14540198.18	17120.72	338.266	0.21	
23927.00	90.920	342.880	6144.78	17195.72	15993.65	-6366.92	1728871.92	14540288.08	17214.37	338.293	0.55	
24021.00	90.890	342.860	6143.30	17289.66	16083.47	-6394.61	1728844.25	14540377.87	17308.06	338.318	0.04	
24116.00	91.020	342.900	6141.71	17384.59	16174.25	-6422.57	1728816.30	14540468.61	17402.75	338.343	0.14	
24210.00	91.320	342.640	6139.79	17478.53	16264.01	-6450.41	1728788.47	14540558.34	17496.45	338.366	0.42	
24305.00	91.260	343.110	6137.66	17573.45	16354.77	-6478.37	1728760.52	14540649.07	17591.13	338.391	0.50	
24399.00	91.260	342.770	6135.59	17667.37	16444.62	-6505.94	1728732.96	14540738.87	17684.82	338.415	0.36	
24493.00	91.390	342.900	6133.42	17761.29	16534.41	-6533.68	1728705.23	14540828.63	17778.51	338.438	0.20	
24588.00	91.420	343.000	6131.09	17856.21	16625.20	-6561.52	1728677.40	14540919.39	17873.19	338.462	0.11	
24682.00	90.950	342.840	6129.14	17950.13	16715.04	-6589.13	1728649.81	14541009.19	17966.89	338.485	0.53	
24777.00	91.080	340.470	6127.46	18045.10	16805.19	-6619.02	1728619.92	14541099.31	18061.72	338.502	2.50	



Actual Wellpath Report

David Reinbeau MSH 1H awp 100' - 28269' Proj: 28298'
Page 11 of 13

RECEIVED
 Office of Oil and Gas
 FEB 6 2023
 WV Department of
 Environmental Protection



REFERENCE WELLPATH IDENTIFICATION			
Operator	SWN PRODUCTION COMPANY, LLC	Well	David Reinbeau MSH 1H
Field	Marshall	API	47051024380000
Facility	David Reinbeau MSH Pad	Wellbore	David Reinbeau MSH 1H AWB
Slot	1H		

WELLPATH DATA (308 stations)												
MD [ft]	Inclination [°]	Azimuth [°]	TVD [ft]	Vert Sect [ft]	North [ft]	East [ft]	Grid East [US ft]	Grid North [US ft]	Closure Dist [ft]	Closure Dir [°]	DLS [°/100ft]	Comments
24872.00	91.260	341.210	6125.52	18140.08	16894.91	-6650.19	1728588.76	14541188.99	18156.62	338.514	0.80	
24966.00	90.890	341.080	6123.76	18234.07	16983.85	-6680.56	1728558.40	14541277.89	18250.51	338.528	0.42	
25061.00	90.710	341.130	6122.43	18329.06	17073.72	-6711.33	1728527.65	14541367.73	18345.40	338.541	0.20	
25154.00	90.800	340.870	6121.20	18422.05	17161.64	-6741.60	1728497.39	14541455.62	18438.31	338.554	0.30	
25249.00	90.890	341.030	6119.80	18517.04	17251.43	-6772.61	1728466.40	14541545.37	18533.22	338.566	0.19	
25344.00	90.950	340.870	6118.28	18612.03	17341.22	-6803.61	1728435.41	14541635.12	18628.12	338.578	0.18	
25439.00	90.800	341.030	6116.83	18707.02	17431.00	-6834.61	1728404.41	14541724.88	18723.03	338.590	0.23	
25533.00	90.990	341.140	6115.36	18801.00	17519.92	-6865.08	1728373.96	14541813.75	18816.93	338.603	0.23	
25626.00	91.050	341.270	6113.70	18893.99	17607.94	-6895.04	1728344.01	14541901.75	18909.82	338.615	0.15	
25720.00	90.890	340.870	6112.11	18987.97	17696.85	-6925.53	1728313.53	14541990.62	19003.72	338.627	0.46	
25814.00	91.080	340.990	6110.50	19081.96	17785.68	-6956.24	1728282.84	14542079.41	19097.63	338.639	0.24	
25909.00	90.890	340.710	6108.86	19176.95	17875.40	-6987.40	1728251.69	14542169.10	19192.55	338.650	0.36	
26003.00	90.650	341.050	6107.60	19270.94	17964.21	-7018.18	1728220.92	14542257.87	19286.47	338.661	0.44	
26098.00	90.710	340.550	6106.47	19365.93	18053.92	-7049.42	1728189.69	14542347.55	19381.39	338.671	0.53	
26192.00	90.650	341.560	6105.36	19459.92	18142.82	-7079.94	1728159.19	14542436.41	19475.30	338.683	1.08	
26286.00	90.590	341.180	6104.34	19553.91	18231.89	-7109.96	1728129.17	14542525.45	19569.20	338.696	0.41	
26381.00	90.550	341.030	6103.39	19648.91	18321.77	-7140.73	1728098.42	14542615.29	19664.11	338.707	0.16	
26476.00	90.550	340.960	6102.48	19743.90	18411.58	-7171.66	1728067.50	14542705.07	19759.03	338.718	0.07	
26570.00	90.280	341.010	6101.80	19837.90	18500.45	-7202.29	1728036.88	14542793.91	19852.95	338.729	0.29	
26664.00	90.580	341.580	6101.10	19931.90	18589.48	-7232.43	1728006.75	14542882.90	19946.85	338.741	0.69	
26759.00	90.340	340.760	6100.33	20026.89	18679.40	-7263.09	1727976.10	14542972.78	20041.77	338.752	0.90	
26853.00	90.370	341.260	6099.75	20120.89	18768.28	-7293.68	1727945.53	14543061.63	20135.69	338.763	0.53	
26947.00	90.340	341.350	6099.17	20214.89	18857.32	-7323.81	1727915.41	14543150.63	20229.60	338.775	0.10	
27041.00	90.490	340.940	6098.49	20308.88	18946.27	-7354.19	1727885.04	14543239.55	20323.51	338.786	0.46	
27136.00	90.490	341.070	6097.68	20403.88	19036.09	-7385.11	1727854.13	14543329.34	20418.44	338.796	0.14	
27231.00	90.520	340.810	6096.84	20498.88	19125.88	-7416.13	1727823.13	14543419.09	20513.37	338.806	0.28	
27325.00	90.430	340.930	6096.06	20592.87	19214.69	-7446.93	1727792.33	14543507.86	20607.31	338.815	0.16	
27420.00	90.400	341.360	6095.37	20687.87	19304.59	-7477.63	1727761.64	14543597.73	20702.23	338.826	0.45	
27514.00	90.370	340.680	6094.74	20781.87	19393.47	-7508.21	1727731.09	14543686.58	20796.15	338.836	0.72	
27609.00	90.430	341.110	6094.08	20876.86	19483.24	-7539.30	1727700.00	14543776.31	20891.09	338.845	0.46	



Actual Wellpath Report

David Reinbeau MSH 1H awp 100' - 28269' Proj: 28298'
Page 12 of 13

RECEIVED
 Office of Oil and Gas
 FEB 6 2023
 WV Department of
 Environmental Protection



REFERENCE WELLPATH IDENTIFICATION			
Operator	SWN PRODUCTION COMPANY, LLC	Well	David Reinbeau MSH 1H
Field	Marshall	API	47051024380000
Facility	David Reinbeau MSH Pad	Wellbore	David Reinbeau MSH 1H AWB
Slot	1H		

WELLPATH DATA (308 stations) † = interpolated, ‡ = extrapolated station												
MD [ft]	Inclination [°]	Azimuth [°]	TVD [ft]	Vert Sect [ft]	North [ft]	East [ft]	Grid East [US ft]	Grid North [US ft]	Closure Dist [ft]	Closure Dir [°]	DLS [°/100ft]	Comments
27704.00	90.280	341.170	6093.49	20971.86	19573.14	-7570.01	1727669.31	14543866.17	20986.01	338.856	0.17	
27798.00	90.580	340.720	6092.78	21065.86	19661.98	-7600.70	1727638.63	14543954.98	21079.95	338.865	0.58	
27893.00	90.340	340.710	6092.02	21160.85	19751.65	-7632.07	1727607.27	14544044.61	21174.90	338.873	0.25	
27987.00	90.250	341.120	6091.53	21254.85	19840.48	-7662.80	1727576.55	14544133.41	21268.83	338.882	0.45	
28081.00	90.490	340.910	6090.93	21348.85	19929.37	-7693.38	1727545.98	14544222.26	21362.77	338.892	0.34	
28175.00	90.400	340.920	6090.20	21442.85	20018.20	-7724.12	1727515.26	14544311.06	21456.71	338.901	0.10	
28269.00	90.520	341.010	6089.44	21536.85	20107.05	-7754.77	1727484.61	14544399.88	21550.64	338.910	0.16	
28298.00‡	90.520	341.010	6089.18	21565.84	20134.48	-7764.21	1727475.18	14544427.29	21579.62	338.912	0.00	Proj to TD



Actual Wellpath Report

David Reinbeau MSH 1H awp 100' - 28269' Proj: 28298'
Page 13 of 13

RECEIVED
Office of Oil and Gas
FEB 6 2023
WV Department of
Environmental Protection



REFERENCE WELLPATH IDENTIFICATION			
Operator	SWN PRODUCTION COMPANY, LLC	Well	David Reinbeau MSH 1H
Field	Marshall	API	47051024380000
Facility	David Reinbeau MSH Pad	Wellbore	David Reinbeau MSH 1H AWB
Slot	1H		

TARGETS								
Name	TVD [ft]	North [ft]	East [ft]	Grid East [US ft]	Grid North [US ft]	Latitude	Longitude	Shape
David Reinbeau MSH 1H BHL rev 4	6086.00	20129.40	-7779.50	1727459.90	14544422.22	40°02'53.3725"N	80°41'20.2903"W	rectangle
2D Rectangle 22000 x 100.								
David Reinbeau MSH 1H wp1	6344.90	15259.42	-6098.68	1729140.06	14539554.14	40°02'5.1878"N	80°40'58.9001"W	point
David Reinbeau MSH 1H wp2	6344.90	15726.56	-6280.19	1728958.62	14540021.10	40°02'9.8106"N	80°41'1.2123"W	point
David Reinbeau MSH 1H wp3	6344.90	15757.04	-6290.94	1728947.87	14540051.57	40°02'10.1122"N	80°41'1.3492"W	point
David Reinbeau MSH 1H wp4	6344.90	16311.72	-6461.89	1728776.99	14540606.03	40°02'15.5996"N	80°41'3.5217"W	point
David Reinbeau MSH 1H LP rev 5	6364.00	-150.05	-780.63	1734456.02	14524150.71	39°59'32.7152"N	80°39'51.2774"W	point

WELLPATH COMPOSITION - Ref Wellbore: David Reinbeau MSH 1H AWB Ref Wellpath: David Reinbeau MSH 1H awp 100' - 28269' Proj: 28298'								
Start MD [ft]	End MD [ft]	Positional Uncertainty Model	Log Name/Comment	Wellbore	Survey Date			
26.00	622.00	BH Generic gyro - northseeking (Standard)	1 Imported Gyro 100' - 622	David Reinbeau MSH 1H AWB	8/13/2022			
622.00	2205.00	OWSG MWD rev2 + HRGM	2 Tally MWD 788' - 2205'	David Reinbeau MSH 1H AWB	8/13/2022			
2205.00	5445.00	OWSG MWD rev2 - Standard	3 Tally MWD 2277' - 5445'	David Reinbeau MSH 1H AWB	8/13/2022			
5445.00	28298.00	BH AutoTrak Curve/eXpress (2019) (HRGM, X Short spacing)	4 BH MWD 5572' - 28269'	David Reinbeau MSH 1H AWB	8/13/2022			



RECEIVED
Office of Oil and Gas
FEB 6 2023
WV Department of
Environmental Protection

Well Name: David Reinbeau MSH 1H

47051024380000

LITHOLOGY/FORMATION	TOP DEPTH, MD (FT)	TOP DEPTH, TVD (FT)	BOTTOM DEPTH, MD (FT)	BOTTOM DEPTH, TVD (FT)	QUANTITY AND TYPE OF FLUID
Base of Fresh Water	0.00	0.00	426.00	426.00	
Top of Salt Water	883.00	883.00	NA	NA	
Pittsburgh Coal	770.00	770.00	780.00	780.00	
Pottsville (ss)	882.00	882.00	1017.00	1017.00	
Raven Cliff (ss)	1214.00	1214.00	1456.00	1456.00	
Maxton (ss)	1456.00	1456.00	1629.00	1629.00	
Big Injun (ss)	1893.00	1890.00	2014.00	2011.00	
Berea (siltstone)	2326.00	2320.00	2348.00	2341.00	
Rhinestreet (shale)	5882.00	5785.00	6154.00	6037.00	
Cashaqua (shale)	6154.00	6037.00	6235.00	6105.00	
Middlesex (shale)	6235.00	6105.00	6336.00	6181.00	
Burket (shale)	6336.00	6181.00	6363.00	6199.00	
Tully (ls)	6363.00	6199.00	6430.00	6241.00	
Mahantango (shale)	6430.00	6241.00	6632.00	6332.00	
Marcellus (shale)	6632.00	6332.00	NA	NA	GAS