



# **EQT (Chevron Data) 02-13-21**

**Marshall County, WV Chevron**

**Freeland**

**M07H Plat**

**Wellbore #1**

**Design: Freeland M07H As Drilled**

## **Standard Survey Report**

**23 August, 2021**



**EQT**  
Survey Report

<b>Database:</b>	EDM_Definitive	<b>Local Co-ordinate Reference:</b>	Well M07H Plat
<b>Company:</b>	EQT (Chevron Data) 02-13-21	<b>TVD Reference:</b>	KB@27 @ 1301.000usft
<b>Project:</b>	Marshall County, WV Chevron	<b>MD Reference:</b>	KB@27 @ 1301.000usft
<b>Site:</b>	Freeland	<b>North Reference:</b>	True
<b>Well:</b>	M07H Plat	<b>Survey Calculation Method:</b>	Minimum Curvature
<b>Wellbore:</b>	Wellbore #1		
<b>Design:</b>	Freeland M07H As Drilled		

<b>Project</b>	Marshall County, WV Chevron		
<b>Map System:</b>	US State Plane 1983	<b>System Datum:</b>	Mean Sea Level
<b>Geo Datum:</b>	North American Datum 1983		
<b>Map Zone:</b>	West Virginia Northern Zone		

<b>Site</b>	Freeland				
<b>Site Position:</b>		<b>Northing:</b>	500,572.528 usft	<b>Latitude:</b>	39.87
<b>From:</b>	Lat/Long	<b>Easting:</b>	1,614,533.947 usft	<b>Longitude:</b>	-80.76
<b>Position Uncertainty:</b>	0.000 usft	<b>Slot Radius:</b>	13-3/16 "	<b>Grid Convergence:</b>	-0.8043 °

<b>Well</b>	M07H Plat					
<b>Well Position</b>	<b>+N/-S</b>	0.000 usft	<b>Northing:</b>	500,633.790 usft	<b>Latitude:</b>	39.8676693
	<b>+E/-W</b>	0.000 usft	<b>Easting:</b>	1,614,563.170 usft	<b>Longitude:</b>	80.7609989°W
<b>Position Uncertainty</b>		0.000 usft	<b>Wellhead Elevation:</b>	usft	<b>Ground Level:</b>	1,274.000 usft

<b>Wellbore</b>	Wellbore #1				
<b>Magnetics</b>	<b>Model Name</b>	<b>Sample Date</b>	<b>Declination (°)</b>	<b>Dip Angle (°)</b>	<b>Field Strength (nT)</b>
	User Defined	9/26/2019	-7.9000	66.8500	52,295.90000000

<b>Design</b>	Freeland M07H As Drilled				
<b>Audit Notes:</b>					
<b>Version:</b>	1.0	<b>Phase:</b>	ACTUAL	<b>Tie On Depth:</b>	0.000
<b>Vertical Section:</b>	<b>Depth From (TVD) (usft)</b>	<b>+N/-S (usft)</b>	<b>+E/-W (usft)</b>	<b>Direction (°)</b>	
	0.000	0.000	0.000	340.065	

<b>Survey Program</b>	<b>Date</b>	8/23/2021			
<b>From (°)</b>	<b>To (usft)</b>	<b>Survey (Wellbore)</b>	<b>Tool Name</b>	<b>Description</b>	
0.00	617.998	Freeland M07H Gyro (Wellbore #1)	53_SDI_Keeper_WL_NS+CTSDI_101Ga	- SDI Keep static gyrocompass with con c	

<b>Survey</b>											
<b>Measured Depth (usft)</b>	<b>Inclination (°)</b>	<b>Azimuth (°)</b>	<b>Vertical Depth (usft)</b>	<b>Subsea Depth (usft)</b>	<b>+N/-S (usft)</b>	<b>+E/-W (usft)</b>	<b>Vertical Section (usft)</b>	<b>Dogleg Rate (°/100usft)</b>	<b>Build Rate (°/100usft)</b>	<b>Turn Rate (°/100usft)</b>	
0.000	0.000	0.000	0.000	-1,301.000	0.000	0.000	0.000	0.00000	0.00000	0.00000	
100.000	0.270	3.190	99.999	-1,201.001	0.235	0.013	0.217	0.27000	0.27000	0.00000	
125.000	0.420	336.750	124.999	-1,176.001	0.378	-0.020	0.362	0.85998	0.60000	-105.7604	
149.999	0.250	340.600	149.998	-1,151.002	0.514	-0.074	0.508	0.68556	-0.68000	15.40006	
174.999	0.200	340.100	174.998	-1,126.002	0.606	-0.107	0.607	0.20015	-0.20000	-2.00001	
199.999	0.330	354.680	199.998	-1,101.002	0.719	-0.129	0.720	0.58173	0.52000	58.32022	
224.999	0.280	349.970	224.997	-1,076.003	0.851	-0.146	0.850	0.22357	-0.20000	-18.84007	



**EQT**  
Survey Report

<b>Database:</b>	EDM_Definitive	<b>Local Co-ordinate Reference:</b>	Well M07H Plat
<b>Company:</b>	EQT (Chevron Data) 02-13-21	<b>TVD Reference:</b>	KB@27 @ 1301.000usft
<b>Project:</b>	Marshall County, WV Chevron	<b>MD Reference:</b>	KB@27 @ 1301.000usft
<b>Site:</b>	Freeland	<b>North Reference:</b>	True
<b>Well:</b>	M07H Plat	<b>Survey Calculation Method:</b>	Minimum Curvature
<b>Wellbore:</b>	Wellbore #1		
<b>Design:</b>	Freeland M07H As Drilled		

Survey											
Measured Depth (usft)	Inclination (°)	Azimuth (°)	Vertical Depth (usft)	Subsea Depth (usft)	+N/-S (usft)	+E/-W (usft)	Vertical Section (usft)	Dogleg Rate (°/100usft)	Build Rate (°/100usft)	Turn Rate (°/100usft)	
249.999	0.270	322.750	249.997	-1,051.003	0.958	-0.192	0.966	0.51914	-0.04000	-108.8804 1	
274.999	0.350	307.170	274.996	-1,026.004	1.051	-0.289	1.086	0.46207	0.32000	-62.32023	
299.999	0.290	320.930	299.996	-1,001.004	1.146	-0.389	1.210	0.38835	-0.24000	55.04021	
324.999	0.400	332.960	324.995	-976.005	1.273	-0.469	1.357	0.52452	0.44000	48.12018	
349.999	0.470	337.390	349.994	-951.006	1.445	-0.548	1.546	0.31044	0.28000	17.72007	
374.999	0.380	330.410	374.994	-926.006	1.612	-0.628	1.730	0.41468	-0.36000	-27.92010	
399.998	0.360	337.630	399.993	-901.007	1.757	-0.699	1.890	0.20276	-0.08000	28.88011	
424.998	0.280	351.110	424.993	-876.007	1.890	-0.739	2.028	0.43733	-0.32000	53.92020	
449.998	0.420	351.910	449.992	-851.008	2.041	-0.761	2.178	0.56033	0.56000	3.20001	
474.998	0.490	355.100	474.991	-826.009	2.238	-0.783	2.371	0.29767	0.28000	12.76005	
499.998	0.460	345.280	499.990	-801.010	2.442	-0.818	2.574	0.34652	-0.12000	-39.28015	
524.998	0.300	338.450	524.989	-776.010	2.600	-0.867	2.740	0.66403	-0.64000	-27.32010	
549.998	0.270	327.800	549.989	-751.011	2.710	-0.923	2.863	0.24300	-0.12000	-42.60016	
574.998	0.340	317.690	574.989	-726.011	2.815	-1.004	2.989	0.35216	0.28000	-40.44015	
599.998	0.390	340.770	599.988	-701.012	2.950	-1.082	3.142	0.61614	0.20000	92.32035	
617.998	0.550	346.890	617.987	-683.013	3.092	-1.122	3.289	0.93037	0.88889	34.00013	

Design Annotations				
Measured Depth (usft)	Vertical Depth (usft)	Local Coordinates		Comment
		+N/-S (usft)	+E/-W (usft)	
618.000				Final Gyro Survey=618' MD/TVD

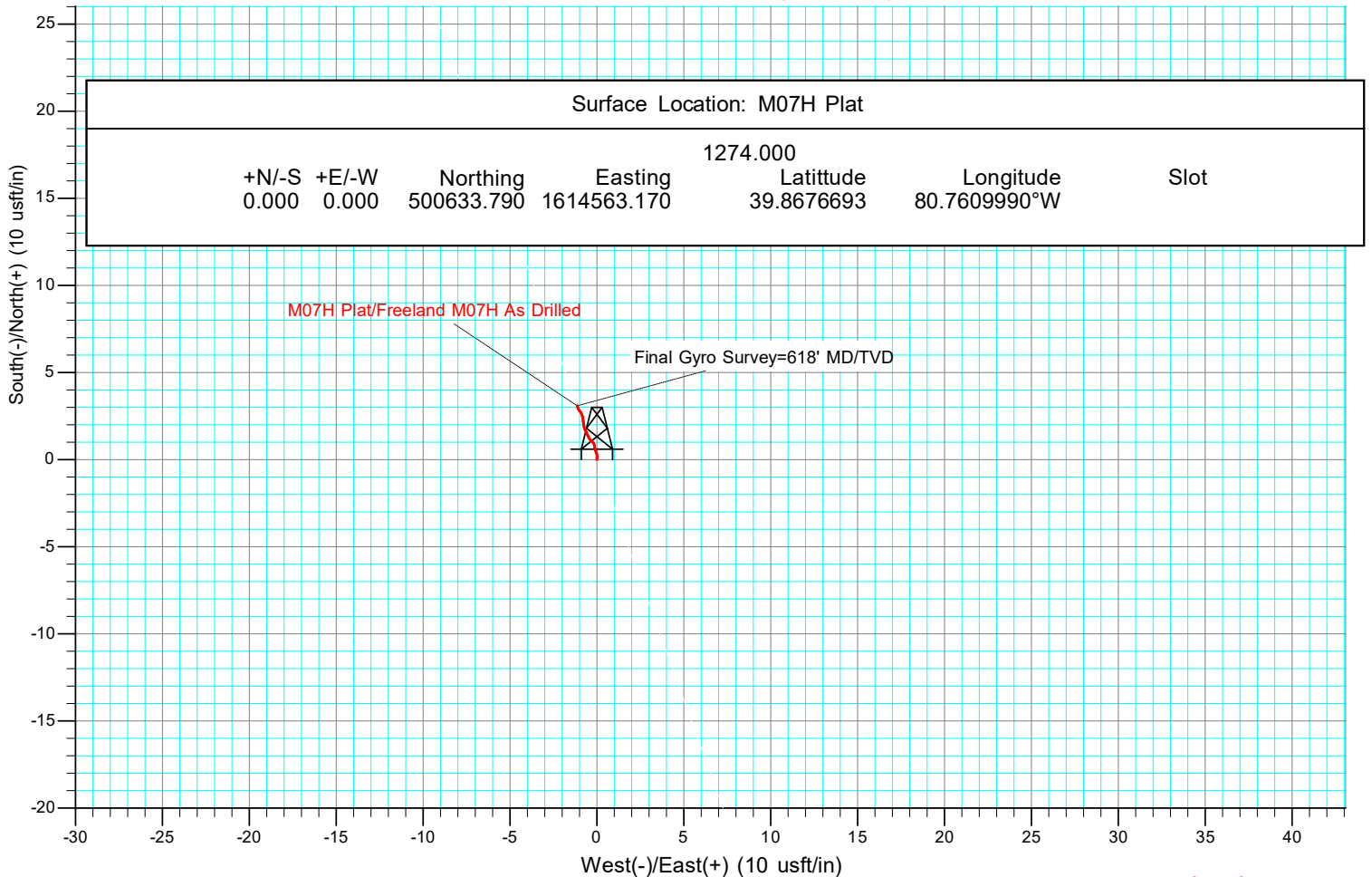
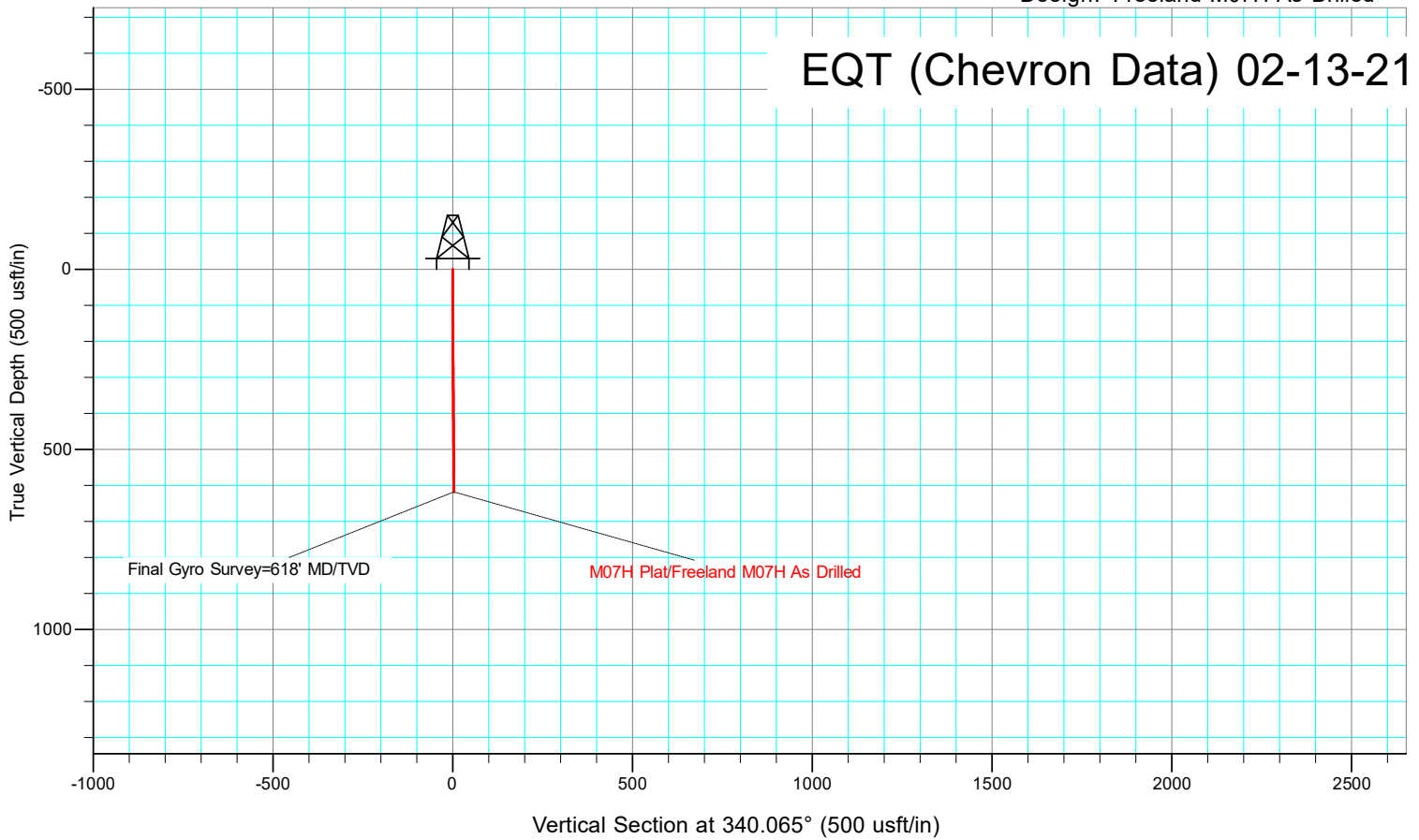
Checked By: \_\_\_\_\_ Approved By: \_\_\_\_\_ Date: \_\_\_\_\_



KB Elevation= KB@27 @ 1301.000usft  
Ground Elevation= 1274.000  
All measurements were taken from KB Elevation

Project: Marshall County, WV Chevron  
Site: Freeland  
Well: M07H Plat  
Wellbore: Wellbore #1  
Design: Freeland M07H As Drilled

# EQT (Chevron Data) 02-13-21



11/19/2021