



EQT (Chevron Data) 02-13-21

Marshall County, WV Chevron

Longworth

M16H

OH

Design: Longworth 16H As Drilled

Standard Survey Report

20 July, 2021

08/26/2022



EQT
Survey Report

Database: EDM_Definitive	Local Co-ordinate Reference: Well M16H
Company: EQT (Chevron Data) 02-13-21	TVD Reference: Air RKB @ 1294.000usft (Highlands 9)
Project: Marshall County, WV Chevron	MD Reference: Air RKB @ 1294.000usft (Highlands 9)
Site: Longworth	North Reference: True
Well: M16H	Survey Calculation Method: Minimum Curvature
Wellbore: OH	
Design: Longworth 16H As Drilled	

Project Marshall County, WV Chevron

Map System: US State Plane 1983	System Datum: Mean Sea Level
Geo Datum: North American Datum 1983	
Map Zone: West Virginia Northern Zone	

Site Longworth

Site Position:	Northing: 493,086.404 usft	Latitude: 39.85
From: Map	Easting: 1,624,022.636 usft	Longitude: -80.73
Position Uncertainty: 0.000 usft	Slot Radius: 13-3/16 "	Grid Convergence: -0.7825 °

Well M16H

Well Position	+N/-S 0.000 usft	Northing: 493,108.301 usft	Latitude: 39.8473734
	+E/-W 0.000 usft	Easting: 1,624,084.331 usft	Longitude: 80.7267153°W
Position Uncertainty	0.000 usft	Wellhead Elevation: 0.000 usft	Ground Level: 1,270.000 usft

Wellbore OH

Magnetics	Model Name	Sample Date	Declination (°)	Dip Angle (°)	Field Strength (nT)
	User Defined	5/16/2016	-8.7189	67.0778	52,269.37594936

Design Longworth 16H As Drilled

Audit Notes:

Version: 1.0	Phase: ACTUAL	Tie On Depth: 0.000		
Vertical Section:	Depth From (TVD) (usft)	+N/-S (usft)	+E/-W (usft)	Direction (°)
	0.000	0.000	0.000	321.332

Survey Program	Date	From (')	To (usft)	Survey (Wellbore)	Tool Name	Description
	7/20/2021	0.00	560.000	Surface Gyro (OH)	NS-GYRO-MS c	North sensing gyrocompassing m/s c
		0.00	5,834.000	EM Tool (OH)	11_MWD+IFR1+AX+Sag c	A007Mb: IFR dec & axial + sag corrections c
		0.00	11,897.000	Survey #3 (OH)	11_MWD+IFR1+AX+Sag c	A007Mb: IFR dec & axial + sag corrections c

Measured Depth (usft)	Inclination (°)	Azimuth (°)	Vertical Depth (usft)	Subsea Depth (usft)	+N/-S (usft)	+E/-W (usft)	Vertical Section (usft)	Dogleg Rate (°/100usft)	Build Rate (°/100usft)	Turn Rate (°/100usft)
0.000	0.000	0.000	0.000	-1,294.000	0.000	0.000	0.000	0.00000	0.00000	0.00000
100.000	0.240	74.060	100.000	-1,194.000	0.058	0.201	-0.081	0.24000	0.24000	0.00000
125.000	0.460	64.130	124.999	-1,169.001	0.116	0.342	-0.123	0.90957	0.88000	-39.72000
150.000	0.530	56.860	149.998	-1,144.002	0.223	0.529	-0.157	0.37566	0.28000	-29.08000
175.000	0.680	36.700	174.997	-1,119.003	0.405	0.715	-0.130	1.03274	0.60000	-80.64000
200.000	0.750	34.410	199.995	-1,094.005	0.659	0.896	-0.045	0.30238	0.28000	-9.16000
225.000	1.010	22.110	224.992	-1,069.008	0.998	1.071	0.110	1.27983	1.04000	-49.20000

08/26/2022



EQT
Survey Report

Database:	EDM_Definitive	Local Co-ordinate Reference:	Well M16H
Company:	EQT (Chevron Data) 02-13-21	TVD Reference:	Air RKB @ 1294.000usft (Highlands 9)
Project:	Marshall County, WV Chevron	MD Reference:	Air RKB @ 1294.000usft (Highlands 9)
Site:	Longworth	North Reference:	True
Well:	M16H	Survey Calculation Method:	Minimum Curvature
Wellbore:	OH		
Design:	Longworth 16H As Drilled		

Survey

Measured Depth (usft)	Inclination (°)	Azimuth (°)	Vertical Depth (usft)	Subsea Depth (usft)	+N/-S (usft)	+E/-W (usft)	Vertical Section (usft)	Dogleg Rate (°/100usft)	Build Rate (°/100usft)	Turn Rate (°/100usft)
250.000	1.210	24.720	249.987	-1,044.013	1.442	1.264	0.336	0.82496	0.80000	10.44000
275.000	1.400	26.810	274.981	-1,019.019	1.954	1.513	0.581	0.78336	0.76000	8.36000
300.000	1.300	29.970	299.974	-994.026	2.472	1.792	0.811	0.49854	-0.40000	12.64000
325.000	1.320	38.570	324.967	-969.033	2.943	2.113	0.978	0.78975	0.08000	34.40000
350.000	1.340	36.950	349.961	-944.039	3.402	2.468	1.114	0.17035	0.08000	-6.48000
375.000	1.310	30.600	374.954	-919.046	3.882	2.790	1.288	0.59914	-0.12000	-25.40000
400.000	1.290	42.810	399.948	-894.052	4.334	3.126	1.430	1.10881	-0.08000	48.84000
425.000	1.360	30.130	424.941	-869.059	4.797	3.467	1.579	1.20306	0.28000	-50.72000
450.000	1.420	30.230	449.934	-844.066	5.321	3.771	1.798	0.24020	0.24000	0.40000
475.000	1.530	33.150	474.925	-819.075	5.868	4.110	2.014	0.53277	0.44000	11.68000
500.000	1.520	26.930	499.916	-794.083	6.443	4.443	2.255	0.66301	-0.04000	-24.88000
525.000	1.530	32.140	524.908	-769.092	7.022	4.770	2.502	0.55586	0.04000	20.84000
550.000	1.510	31.760	549.899	-744.101	7.584	5.121	2.722	0.08959	-0.08000	-1.52000
560.000	1.630	35.070	559.895	-734.105	7.813	5.272	2.806	1.50366	1.20000	33.10000
567.000	1.500	26.690	566.892	-727.107	7.976	5.371	2.872	3.75517	-1.85714	-119.71429
598.000	1.520	28.350	597.882	-696.118	8.700	5.748	3.202	0.15515	0.06452	5.35484
630.000	1.600	29.590	629.870	-664.130	9.462	6.170	3.533	0.27133	0.25000	3.87500
631.000	1.600	29.590	630.869	-663.131	9.487	6.184	3.543	0.00000	0.00000	0.00000
662.000	1.480	35.830	661.858	-632.142	10.188	6.632	3.810	0.66465	-0.38710	20.12903
693.000	1.030	54.300	692.851	-601.149	10.675	7.093	3.903	1.93420	-1.45161	59.58065
724.000	0.680	100.930	723.848	-570.152	10.802	7.500	3.748	2.41685	-1.12903	150.41936
755.000	1.080	151.990	754.844	-539.156	10.510	7.817	3.321	2.70971	1.29032	164.70968
787.000	1.270	154.760	786.838	-507.162	9.923	8.110	2.680	0.61954	0.59375	8.65625
818.000	0.640	129.790	817.833	-476.167	9.501	8.390	2.176	2.38979	-2.03226	-80.54839
849.000	0.630	46.570	848.832	-445.168	9.507	8.647	2.021	2.72057	-0.03226	-268.45161
880.000	1.120	13.710	879.828	-414.171	9.919	8.842	2.220	2.20178	1.58065	-106.00000
912.000	1.640	0.840	911.819	-382.181	10.681	8.923	2.764	1.88194	1.62500	-40.21875
943.000	2.030	344.700	942.803	-351.197	11.654	8.785	3.610	2.07671	1.25806	-52.06452
1,039.000	3.540	325.490	1,038.689	-255.311	15.736	6.657	8.127	1.82806	1.57292	-20.01042
1,133.000	4.190	322.700	1,132.475	-161.525	20.859	2.931	14.455	0.71965	0.69149	-2.96809
1,226.000	4.560	317.680	1,225.204	-68.796	26.296	-1.616	21.541	0.57221	0.39785	-5.39785
1,320.000	4.870	313.990	1,318.886	24.886	31.830	-7.003	29.227	0.46123	0.32979	-3.92553
1,413.000	5.470	313.520	1,411.507	117.507	37.624	-13.057	37.534	0.64676	0.64516	-0.50538
1,507.000	4.980	313.720	1,505.116	211.117	43.529	-19.255	46.017	0.52164	-0.52128	0.21277
1,601.000	3.750	307.370	1,598.843	304.843	48.215	-24.647	53.044	1.40394	-1.30851	-6.75532
1,694.000	4.100	307.460	1,691.624	397.624	52.083	-29.703	59.223	0.37640	0.37634	0.09677
1,788.000	3.280	312.320	1,785.429	491.429	55.937	-34.359	65.142	0.93288	-0.87234	5.17021
1,881.000	2.590	320.380	1,878.307	584.307	59.347	-37.666	69.871	0.86276	-0.74194	8.66667
1,975.000	3.360	324.940	1,972.179	678.179	63.238	-40.603	74.743	0.85633	0.81915	4.85106
2,069.000	4.690	328.150	2,065.946	771.946	68.757	-44.213	81.309	1.43450	1.41489	3.41489
2,162.000	5.590	327.120	2,158.571	864.571	75.791	-48.678	89.590	0.97278	0.96774	-1.10753



EQT
Survey Report

Database:	EDM_Definitive	Local Co-ordinate Reference:	Well M16H
Company:	EQT (Chevron Data) 02-13-21	TVD Reference:	Air RKB @ 1294.000usft (Highlands 9)
Project:	Marshall County, WV Chevron	MD Reference:	Air RKB @ 1294.000usft (Highlands 9)
Site:	Longworth	North Reference:	True
Well:	M16H	Survey Calculation Method:	Minimum Curvature
Wellbore:	OH		
Design:	Longworth 16H As Drilled		

Survey

Measured Depth (usft)	Inclination (°)	Azimuth (°)	Vertical Depth (usft)	Subsea Depth (usft)	+N/-S (usft)	+E/-W (usft)	Vertical Section (usft)	Dogleg Rate (°/100usft)	Build Rate (°/100usft)	Turn Rate (°/100usft)
2,194.000	5.890	327.690	2,190.410	896.410	78.487	-50.402	92.773	0.95427	0.93750	1.78125
2,271.000	6.340	328.490	2,266.972	972.972	85.451	-54.736	100.918	0.59479	0.58442	1.03896
2,364.000	4.500	312.970	2,359.557	1,065.557	92.317	-60.090	109.623	2.51260	-1.97849	-16.68817
2,458.000	3.860	309.400	2,453.307	1,159.307	96.838	-65.233	116.368	0.73466	-0.68085	-3.79787
2,552.000	3.680	311.650	2,547.103	1,253.103	100.852	-69.932	122.437	0.24783	-0.19149	2.39362
2,646.000	3.900	316.300	2,640.898	1,346.898	105.167	-74.395	128.595	0.40193	0.23404	4.94681
2,739.000	3.590	310.830	2,733.699	1,439.699	109.358	-78.783	134.608	0.50827	-0.33333	-5.88172
2,833.000	2.430	276.350	2,827.575	1,533.575	111.503	-82.991	138.912	2.23359	-1.23404	-36.68085
2,926.000	1.430	191.300	2,920.536	1,626.536	110.582	-85.178	139.560	2.91493	-1.07527	-91.45162
3,020.000	1.520	177.060	3,014.506	1,720.506	108.187	-85.344	137.794	0.40038	0.09574	-15.14894
3,113.000	1.350	78.960	3,107.487	1,813.487	107.165	-84.205	136.284	2.33379	-0.18280	-105.48387
3,207.000	1.820	56.360	3,201.452	1,907.452	108.204	-81.876	135.640	0.82277	0.50000	-24.04255
3,300.000	1.490	25.490	3,294.415	2,000.415	110.114	-80.126	136.038	1.00700	-0.35484	-33.19355
3,394.000	1.280	37.350	3,388.388	2,094.388	112.051	-78.963	136.824	0.37689	-0.22340	12.61702
3,487.000	1.970	352.320	3,481.353	2,187.353	114.461	-78.546	138.445	1.50336	0.74194	-48.41936
3,581.000	1.830	330.180	3,575.303	2,281.303	117.365	-79.509	141.313	0.78971	-0.14894	-23.55319
3,675.000	1.830	327.240	3,669.255	2,375.255	119.929	-81.067	144.289	0.09987	0.00000	-3.12766
3,768.000	1.380	338.630	3,762.219	2,468.219	122.206	-82.273	146.820	0.60722	-0.50538	12.24731
3,862.000	1.810	322.860	3,856.183	2,562.183	124.428	-83.576	149.369	0.66245	0.47872	-16.77660
3,955.000	0.820	320.710	3,949.157	2,655.157	126.114	-84.884	151.503	1.06565	-1.06452	-2.31183
4,049.000	0.230	290.750	4,043.153	2,749.153	126.701	-85.486	152.338	0.67156	-0.62766	-31.87234
4,142.000	0.570	320.870	4,136.151	2,842.151	127.126	-85.953	152.961	0.41784	0.36559	32.38710
4,236.000	0.500	257.950	4,230.147	2,936.147	127.403	-86.649	153.613	0.59746	-0.07447	-66.93617
4,330.000	0.640	293.510	4,324.143	3,030.143	127.527	-87.531	154.261	0.39656	0.14894	37.82979
4,423.000	0.890	278.350	4,417.135	3,123.135	127.839	-88.722	155.248	0.34365	0.26882	-16.30108
4,517.000	0.910	241.960	4,511.124	3,217.124	127.594	-90.103	155.920	0.59825	0.02128	-38.71277
4,611.000	0.850	231.280	4,605.113	3,311.113	126.807	-91.306	156.057	0.18547	-0.06383	-11.36170
4,704.000	0.870	245.410	4,698.102	3,404.103	126.082	-92.486	156.228	0.22847	0.02151	15.19355
4,798.000	0.700	204.120	4,792.094	3,498.094	125.261	-93.370	156.139	0.61270	-0.18085	-43.92553
4,891.000	0.820	135.400	4,885.088	3,591.088	124.269	-93.135	155.218	0.92856	0.12903	-73.89247
4,985.000	1.530	121.440	4,979.068	3,685.068	123.135	-91.592	153.369	0.80893	0.75532	-14.85106
5,079.000	0.570	120.670	5,073.051	3,779.051	122.242	-90.119	151.751	1.02136	-1.02128	-0.81915
5,172.000	0.880	135.760	5,166.043	3,872.043	121.494	-89.223	150.607	0.38872	0.33333	16.22581
5,266.000	0.440	105.760	5,260.037	3,966.037	120.879	-88.372	149.595	0.58010	-0.46809	-31.91489
5,360.000	0.400	160.270	5,354.035	4,060.035	120.472	-87.914	148.991	0.41098	-0.04255	57.98936
5,453.000	0.440	213.670	5,447.033	4,153.033	119.870	-88.002	148.576	0.40765	0.04301	57.41936
5,547.000	0.380	221.940	5,541.030	4,247.030	119.337	-88.411	148.416	0.08950	-0.06383	8.79787
5,640.000	0.450	225.890	5,634.028	4,340.028	118.854	-88.879	148.331	0.08127	0.07527	4.24731
5,734.000	0.500	213.170	5,728.025	4,434.025	118.253	-89.368	148.168	0.12381	0.05319	-13.53192
5,765.000	0.770	220.100	5,759.023	4,465.023	117.981	-89.577	148.085	0.90395	0.87097	22.35484
5,834.000	0.770	220.958	5,828.016	4,534.017	117.276	-90.179	147.911	0.01670	0.00000	1.24286

KOP=5835' MD/ 5829' TVD



EQT
Survey Report

Database:	EDM_Definitive	Local Co-ordinate Reference:	Well M16H
Company:	EQT (Chevron Data) 02-13-21	TVD Reference:	Air RKB @ 1294.000usft (Highlands 9)
Project:	Marshall County, WV Chevron	MD Reference:	Air RKB @ 1294.000usft (Highlands 9)
Site:	Longworth	North Reference:	True
Well:	M16H	Survey Calculation Method:	Minimum Curvature
Wellbore:	OH		
Design:	Longworth 16H As Drilled		

Survey											
Measured Depth (usft)	Inclination (°)	Azimuth (°)	Vertical Depth (usft)	Subsea Depth (usft)	+N/-S (usft)	+E/-W (usft)	Vertical Section (usft)	Dogleg Rate (°/100usft)	Build Rate (°/100usft)	Turn Rate (°/100usft)	
5,835.000	0.770	220.970	5,829.016	4,535.016	117.266	-90.188	147.909	0.01670	0.00012	1.24281	
5,925.000	4.650	329.270	5,918.920	4,624.920	119.947	-92.450	151.415	5.49553	4.31111	120.33334	
6,018.000	11.650	328.900	6,010.924	4,716.924	131.242	-99.235	164.473	7.52705	7.52688	-0.39785	
6,110.000	17.980	321.930	6,099.827	4,805.827	150.395	-112.804	187.906	7.13592	6.88043	-7.57609	
6,202.000	24.850	323.490	6,185.424	4,891.425	177.143	-133.085	221.462	7.49238	7.46739	1.69565	
6,295.000	30.180	324.270	6,267.876	4,973.876	211.851	-158.381	264.367	5.74415	5.73118	0.83871	
6,387.000	38.670	322.440	6,343.696	5,049.696	253.486	-189.464	316.295	9.29560	9.22826	-1.98913	
6,479.000	49.600	324.380	6,409.628	5,115.628	304.905	-227.504	380.210	11.96969	11.88044	2.10870	
6,571.000	59.760	326.370	6,462.751	5,168.751	366.636	-270.030	454.979	11.18270	11.04348	2.16304	
Top of Marcellus @ 6504' TVD											
6,650.250	69.686	328.018	6,496.550	5,202.550	426.815	-308.771	526.170	12.66493	12.52513	2.07962	
6,664.000	71.410	328.280	6,501.128	5,207.128	437.827	-315.612	539.042	12.66493	12.53695	1.90472	
6,756.000	78.820	324.290	6,524.754	5,230.754	511.687	-364.963	627.546	9.07802	8.05435	-4.33696	
M16H LP											
6,849.000	86.220	317.350	6,536.867	5,242.867	583.039	-423.176	719.628	10.86166	7.95699	-7.46237	
LP/Deepest Point of Well=6942' MD/ 6540' TVD											
6,942.000	90.400	319.890	6,539.609	5,245.609	652.771	-484.607	812.455	5.25844	4.49462	2.73118	
M16H LP2											
6,961.701	90.501	319.929	6,539.454	5,245.454	667.843	-497.294	832.150	0.54705	0.51087	0.19564	
7,034.000	90.870	320.070	6,538.589	5,244.590	723.222	-543.764	904.424	0.54705	0.51087	0.19566	
7,127.000	90.200	320.760	6,537.721	5,243.721	794.891	-603.022	997.407	1.03413	-0.72043	0.74194	
7,220.000	90.370	320.530	6,537.259	5,243.259	866.801	-661.995	1,090.399	0.30753	0.18280	-0.24731	
7,312.000	90.000	321.930	6,536.961	5,242.961	938.528	-719.603	1,182.396	1.57398	-0.40217	1.52174	
7,405.000	90.170	322.610	6,536.823	5,242.824	1,012.081	-776.513	1,275.383	0.75368	0.18280	0.73118	
7,497.000	90.500	322.270	6,536.286	5,242.286	1,085.010	-832.594	1,367.364	0.51501	0.35870	-0.36957	
7,590.000	90.400	322.750	6,535.555	5,241.555	1,158.799	-889.194	1,460.341	0.52720	-0.10753	0.51613	
7,683.000	90.870	321.840	6,534.524	5,240.525	1,232.372	-946.069	1,553.321	1.10124	0.50538	-0.97849	
7,776.000	90.230	321.710	6,533.632	5,239.632	1,305.428	-1,003.610	1,646.313	0.70222	-0.68817	-0.13978	
7,868.000	90.700	322.590	6,532.885	5,238.885	1,378.070	-1,060.058	1,738.299	1.08437	0.51087	0.95652	
7,961.000	90.200	320.730	6,532.155	5,238.155	1,451.008	-1,117.744	1,831.291	2.07094	-0.53763	-2.00000	
8,054.000	90.670	321.780	6,531.449	5,237.449	1,523.539	-1,175.946	1,924.286	1.23695	0.50538	1.12903	
8,146.000	90.370	321.250	6,530.614	5,236.614	1,595.550	-1,233.196	2,016.282	0.66195	-0.32609	-0.57609	
8,239.000	90.800	321.790	6,529.664	5,235.664	1,668.349	-1,291.061	2,109.276	0.74222	0.46237	0.58065	
8,332.000	90.770	321.560	6,528.390	5,234.390	1,741.301	-1,348.727	2,202.265	0.24938	-0.03226	-0.24731	
8,424.000	90.870	321.290	6,527.073	5,233.073	1,813.219	-1,406.086	2,294.256	0.31293	0.10870	-0.29348	
8,517.000	90.810	320.640	6,525.710	5,231.710	1,885.449	-1,464.650	2,387.243	0.70182	-0.06452	-0.69892	
8,610.000	90.970	321.830	6,524.265	5,230.265	1,957.953	-1,522.872	2,480.230	1.29093	0.17204	1.27957	
8,702.000	90.600	320.860	6,523.005	5,229.005	2,029.790	-1,580.332	2,572.220	1.12835	-0.40217	-1.05435	
8,795.000	90.840	321.510	6,521.836	5,227.836	2,102.247	-1,638.620	2,665.212	0.74499	0.25806	0.69892	
8,887.000	90.800	320.950	6,520.519	5,226.520	2,173.969	-1,696.224	2,757.202	0.61018	-0.04348	-0.60870	
8,980.000	90.800	320.930	6,519.221	5,225.221	2,246.175	-1,754.821	2,850.191	0.02150	0.00000	-0.02151	
9,072.000	90.870	321.120	6,517.880	5,223.880	2,317.690	-1,812.681	2,942.180	0.22007	0.07609	0.20652	
9,165.000	90.370	320.920	6,516.874	5,222.874	2,389.981	-1,871.179	3,035.173	0.57905	-0.53763	-0.21505	



EQT
Survey Report

Database:	EDM_Definitive	Local Co-ordinate Reference:	Well M16H
Company:	EQT (Chevron Data) 02-13-21	TVD Reference:	Air RKB @ 1294.000usft (Highlands 9)
Project:	Marshall County, WV Chevron	MD Reference:	Air RKB @ 1294.000usft (Highlands 9)
Site:	Longworth	North Reference:	True
Well:	M16H	Survey Calculation Method:	Minimum Curvature
Wellbore:	OH		
Design:	Longworth 16H As Drilled		

Measured Depth (usft)	Inclination (°)	Azimuth (°)	Vertical Depth (usft)	Subsea Depth (usft)	+N/-S (usft)	+E/-W (usft)	Vertical Section (usft)	Dogleg Rate (°/100usft)	Build Rate (°/100usft)	Turn Rate (°/100usft)
9,258.000	90.700	321.600	6,516.006	5,222.006	2,462.516	-1,929.374	3,128.168	0.81271	0.35484	0.73118
9,351.000	90.470	321.090	6,515.056	5,221.056	2,535.138	-1,987.461	3,221.163	0.60155	-0.24731	-0.54839
9,443.000	90.640	321.340	6,514.165	5,220.165	2,606.849	-2,045.087	3,313.158	0.32860	0.18478	0.27174
9,536.000	90.470	321.480	6,513.264	5,219.264	2,679.537	-2,103.093	3,406.153	0.23680	-0.18280	0.15054
9,628.000	90.370	321.090	6,512.590	5,218.590	2,751.319	-2,160.632	3,498.151	0.43762	-0.10870	-0.42391
9,721.000	90.470	321.590	6,511.908	5,217.908	2,823.938	-2,218.727	3,591.148	0.54827	0.10753	0.53763
9,814.000	90.500	321.290	6,511.121	5,217.121	2,896.657	-2,276.695	3,684.144	0.32418	0.03226	-0.32258
9,906.000	90.470	320.950	6,510.342	5,216.342	2,968.273	-2,334.441	3,776.140	0.37099	-0.03261	-0.36957
9,999.000	90.230	321.380	6,509.774	5,215.774	3,040.714	-2,392.758	3,869.138	0.52950	-0.25806	0.46237
10,091.000	90.370	321.610	6,509.292	5,215.292	3,112.708	-2,450.035	3,961.136	0.29267	0.15217	0.25000
10,184.000	90.330	321.740	6,508.724	5,214.724	3,185.665	-2,507.705	4,054.133	0.14625	-0.04301	0.13978
10,276.000	90.500	322.010	6,508.058	5,214.058	3,258.037	-2,564.502	4,146.126	0.34680	0.18478	0.29348
10,369.000	90.700	321.330	6,507.084	5,213.084	3,330.986	-2,622.176	4,239.119	0.76211	0.21505	-0.73118
10,461.000	90.800	321.030	6,505.880	5,211.880	3,402.659	-2,679.844	4,331.110	0.34370	0.10870	-0.32609
10,554.000	90.470	320.480	6,504.849	5,210.849	3,474.678	-2,738.675	4,424.099	0.68965	-0.35484	-0.59140
10,647.000	90.370	321.240	6,504.167	5,210.167	3,546.807	-2,797.376	4,517.093	0.82423	-0.10753	0.81720
10,739.000	90.470	320.270	6,503.493	5,209.493	3,618.053	-2,855.577	4,609.085	1.05991	0.10870	-1.05435
10,832.000	90.600	319.800	6,502.624	5,208.624	3,689.328	-2,915.310	4,702.057	0.52433	0.13978	-0.50538
10,924.000	90.700	319.810	6,501.581	5,207.581	3,759.598	-2,974.682	4,794.018	0.10924	0.10870	0.01087
11,016.000	90.770	320.020	6,500.400	5,206.401	3,829.981	-3,033.918	4,885.982	0.24059	0.07609	0.22826
11,109.000	90.670	319.940	6,499.232	5,205.232	3,901.196	-3,093.717	4,978.949	0.13770	-0.10753	-0.08602
11,201.000	90.810	319.440	6,498.044	5,204.044	3,971.345	-3,153.229	5,070.903	0.56434	0.15217	-0.54348
11,293.000	91.010	319.500	6,496.582	5,202.583	4,041.263	-3,213.007	5,162.843	0.22696	0.21739	0.06522
11,386.000	90.670	319.060	6,495.219	5,201.219	4,111.740	-3,273.670	5,255.773	0.59787	-0.36559	-0.47312
11,478.000	91.210	318.940	6,493.710	5,199.710	4,181.164	-3,334.019	5,347.684	0.60127	0.58696	-0.13043
11,571.000	90.300	320.430	6,492.484	5,198.484	4,252.067	-3,394.182	5,440.634	1.87719	-0.97849	1.60215
11,663.000	90.970	319.470	6,491.465	5,197.465	4,322.486	-3,453.375	5,532.600	1.27242	0.72826	-1.04348
11,755.000	91.310	321.200	6,489.634	5,195.634	4,393.290	-3,512.084	5,624.564	1.91604	0.36957	1.88043
11,848.000	90.540	319.690	6,488.133	5,194.133	4,464.982	-3,571.299	5,717.538	1.82237	-0.82796	-1.62366
Final Survey=11875' MD/ 6488' TVD										
11,875.000	90.300	319.700	6,487.935	5,193.935	4,485.572	-3,588.763	5,744.526	0.88966	-0.88889	0.03704
M16H BHL										
11,896.553	90.300	319.700	6,487.822	5,193.822	4,502.010	-3,602.704	5,766.070	0.00000	0.00000	0.00000
Projection to TD=11897' MD/ 6488' TVD										
11,897.000	90.300	319.700	6,487.820	5,193.820	4,502.351	-3,602.993	5,766.517	0.00019	0.00000	0.00000



EQT
Survey Report

Database: EDM_Definitive	Local Co-ordinate Reference: Well M16H
Company: EQT (Chevron Data) 02-13-21	TVD Reference: Air RKB @ 1294.000usft (Highlands 9)
Project: Marshall County, WV Chevron	MD Reference: Air RKB @ 1294.000usft (Highlands 9)
Site: Longworth	North Reference: True
Well: M16H	Survey Calculation Method: Minimum Curvature
Wellbore: OH	
Design: Longworth 16H As Drilled	

Design Targets									
Target Name	Dip Angle (°)	Dip Dir. (°)	TVD (usft)	+N/-S (117.266)	+E/-W (-90.188)	Northing (usft)	Easting (usft)	Latitude	Longitude
Longworth 16H KOP - hit/miss target - Shape	0.000	0.000	5,829.016	117.266	-90.188	493,226.788	1,623,995.752	39.8476954	80.7270365°W
- actual wellpath hits target center - Point									
Longworth 16H BHL - actual wellpath hits target center - Point	0.000	0.000	6,487.820	4,502.312	-3,602.960	497,659.392	1,620,543.183	39.8597330	80.7395500°W
Longworth 16H LP - actual wellpath hits target center - Point	0.000	0.000	6,539.609	652.771	-484.607	493,767.629	1,623,608.683	39.8491655	80.7284413°W

Measured Depth (usft)	Vertical Depth (usft)	Name	Lithology	Dip (°)	Dip Direction (°)
6,650.250	6,504.000	Top of Marcellus@6504' TVD		-1.0000	

Measured Depth (usft)	Vertical Depth (usft)	Local Coordinates		Comment
		+N/-S (usft)	+E/-W (usft)	
5,835.000	5,829.016	117.266	-90.188	KOP=5835' MD/ 5829' TVD
6,942.000	6,539.609	652.771	-484.607	LP/Deepest Point of Well=6942' MD/ 6540' TVD
11,875.000	6,487.935	4,485.572	-3,588.763	Final Survey=11875' MD/ 6488' TVD
11,897.000	6,487.820	4,502.351	-3,602.993	Projection to TD=11897' MD/ 6488' TVD

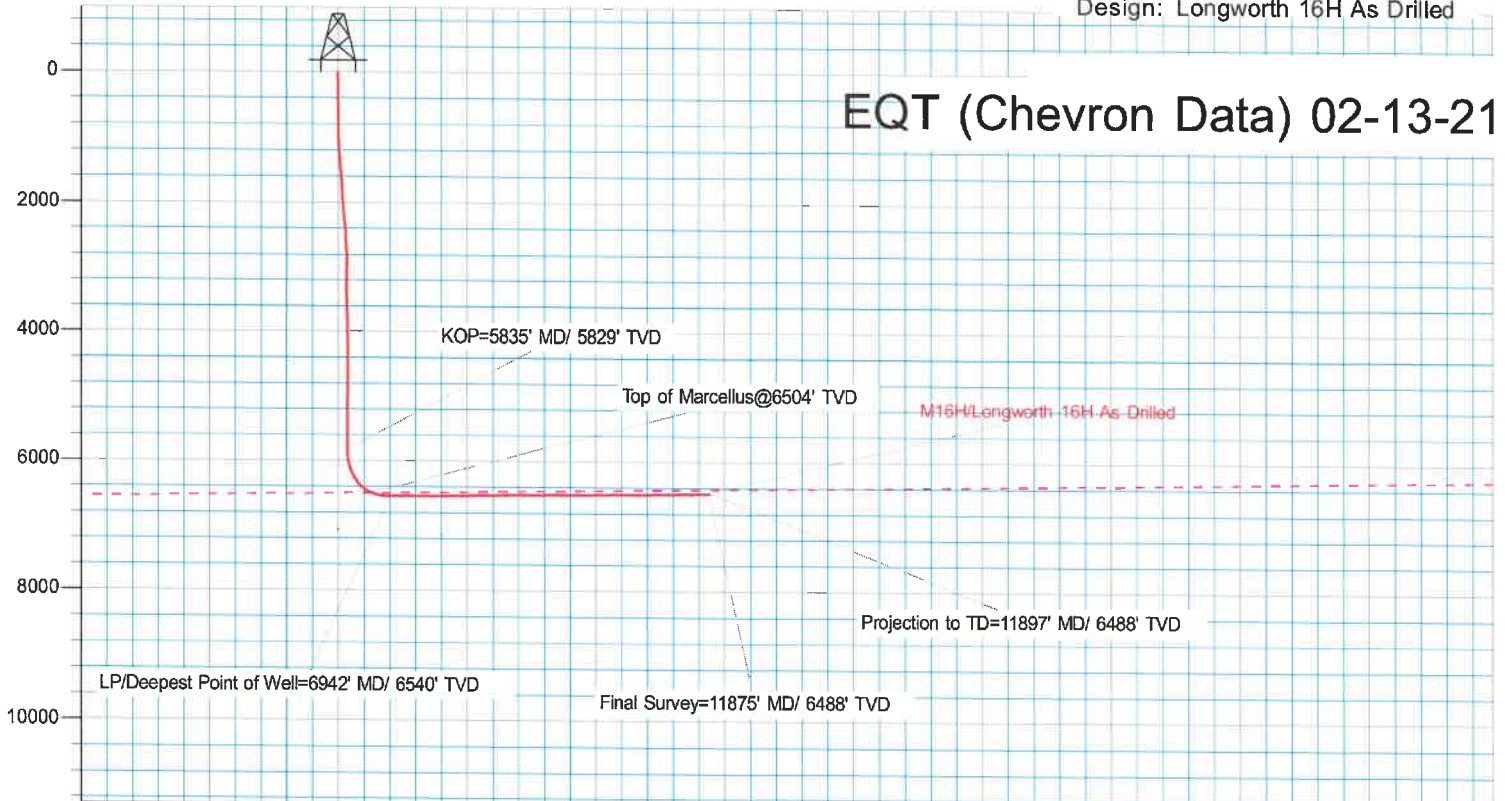
Checked By: _____ Approved By: _____ Date: _____

08/26/2022



KB Elevation= Air RKB @ 1294.000ust (Highlands 9) Site: Longworth
 Ground Elevation= 1270.000 Well: M16H
 All measurements were taken from KB Elevation Wellbore: OH
 Design: Longworth 16H As Drilled

EQT (Chevron Data) 02-13-21

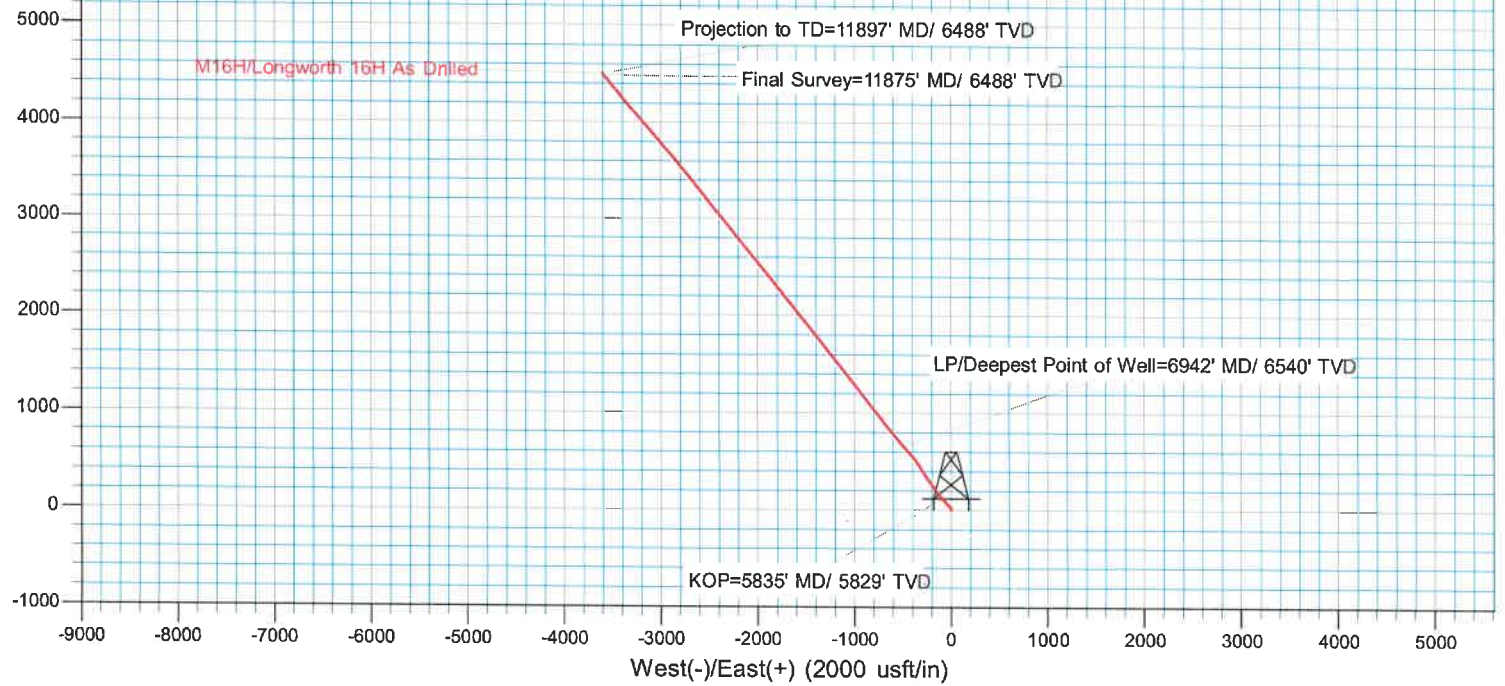


Surface Location: M16H

		Ground Level: 1270.000					
+N/-S	+E/-W	Northing	Easting	Latitude	Longitude	Slot	
0.000	0.000	493108.302	1624084.331	39.8473734	80.7267154°W		

DESIGN TARGET DETAILS

Name	TVD	Northing	Easting	Latitude	Longitude
Longworth 16H KOP	5829.017	493226.788	1623995.753	39.8476953	80.7270366°W
Longworth 16H BHL	6487.820	497659.391	1620543.183	39.8597329	80.7395500°W
Longworth 16H LP	6539.609	493767.629	1623608.683	39.8491655	80.7284414°W



08/26/2022