



EQT (Chevron Data) 02-13-21

Marshall County, WV Chevron

Hines Pad EQT

M07H - Slot M07H

OH

Design: Hines M07H As Drilled

Standard Survey Report

27 July, 2021

05/27/2022



EQT
Survey Report

Database:	EDM_Definitive	Local Co-ordinate Reference:	Well M07H - Slot M07H
Company:	EQT (Chevron Data) 02-13-21	TVD Reference:	GL at 1125.00' & 25' KB @ 1149.998usft
Project:	Marshall County, WV Chevron	MD Reference:	GL at 1125.00' & 25' KB @ 1149.998usft
Site:	Rings Pad EQT	North Reference:	True
Well:	M07H	Survey Calculation Method:	Minimum Curvature
Wellbore:	OH		
Design:	Rings M07H As Drilled		

Project:	Marshall County, WV Chevron		
Mean System:	US State Plane 1983	System Datum:	Mean Sea Level
Gen. Zone:	North American Datum 1983		
Mean Zone:	West Virginia Northern Zone		

Site:	Rings Pad EQT		
Site Position:		Northing:	514,501.050 usft
From:	Map	Easting:	1,631,895.930 usft
Position Accuracy:	1.500 usft	Slot Radius:	13-3/16 "
		Latitude:	39.91
		Longitude:	-80.70
		Grid Convergence:	-0.7653 °

Well:	M07H - Slot M07H					
Well Position	+N-S	0.000 usft	Northing:	514,407.152 usft	Latitude:	39.9061350
	+E-W	0.000 usft	Easting:	1,632,053.327 usft	Longitude:	80.6993480°W
Position Accuracy:	3.000 usft	Wellhead Elevation:	0.000 usft	Ground Level:	1,124.998 usft	

Wellbore:	OH				
Magnetics	Model Name	Sample Date	Declination (°)	Dip Angle (°)	Field Strength (nT)
	IGRF2000	12/31/2004	-8.4133	68.2443	53,878.79413156

Design:	Rings M07H As Drilled				
Version:	1.0	Phase:	ACTUAL	Tie On Depth:	0.000
Vertical Section:	Depth From (TVD) (usft)	+N-S (usft)	+E-W (usft)	Direction (°)	
	0.000	0.000	0.000	151.051	

Survey Program	Date	7/27/2021	ACTUAL	Tie On Depth:	0.000
From (l)	To (usft)	Survey (Wellbore)	Tool Name	Description	
0.00	378.998	SDI Keeper v1.04 (OH)	SDI Standard Keeper 104	Standard Wireline Keeper ver 1.0.4	
0.00	207.998	MWD (OH)	MWD c	MWD - Standard c	
0.00	182.998	MWD (OH)	MWD c	MWD - Standard c	

Survey:											
Measured Depth (usft)	Inclination (°)	Azimuth (°)	Vertical Depth (usft)	Subsea Depth (usft)	+N-S (usft)	+E-W (usft)	Vertical Section (usft)	Dogleg Rate (°/100usft)	Build Rate (°/100usft)	Turn Rate (°/100usft)	
0.000	0.000	0.000	0.000	-1,149.998	0.000	0.000	0.000	0.00000	0.00000	0.00000	
23.320	0.000	23.320	23.320	-1,124.998	0.000	0.000	0.000	0.00000	0.00000	0.00000	
46.640	0.000	46.640	46.640	-1,099.998	0.000	0.000	0.000	0.00000	0.00000	0.00000	
70.000	0.000	70.000	70.000	-1,075.000	0.000	0.000	0.000	0.00000	0.00000	0.00000	
93.360	0.000	93.360	93.360	-1,050.000	0.000	0.000	0.000	0.00000	0.00000	0.00000	
116.720	0.000	116.720	116.720	-1,025.000	0.000	0.000	0.000	0.00000	0.00000	0.00000	
140.080	0.000	140.080	140.080	-1,000.000	0.000	0.000	0.000	0.00000	0.00000	0.00000	
163.440	0.000	163.440	163.440	-975.000	0.000	0.000	0.000	0.00000	0.00000	0.00000	
186.800	0.000	186.800	186.800	-950.000	0.000	0.000	0.000	0.00000	0.00000	0.00000	
210.160	0.000	210.160	210.160	-925.000	0.000	0.000	0.000	0.00000	0.00000	0.00000	
233.520	0.000	233.520	233.520	-900.000	0.000	0.000	0.000	0.00000	0.00000	0.00000	
256.880	0.000	256.880	256.880	-875.000	0.000	0.000	0.000	0.00000	0.00000	0.00000	
280.240	0.000	280.240	280.240	-850.000	0.000	0.000	0.000	0.00000	0.00000	0.00000	
303.600	0.000	303.600	303.600	-825.000	0.000	0.000	0.000	0.00000	0.00000	0.00000	
326.960	0.000	326.960	326.960	-800.000	0.000	0.000	0.000	0.00000	0.00000	0.00000	
350.320	0.000	350.320	350.320	-775.000	0.000	0.000	0.000	0.00000	0.00000	0.00000	
373.680	0.000	373.680	373.680	-750.000	0.000	0.000	0.000	0.00000	0.00000	0.00000	
397.040	0.000	397.040	397.040	-725.000	0.000	0.000	0.000	0.00000	0.00000	0.00000	
420.400	0.000	420.400	420.400	-700.000	0.000	0.000	0.000	0.00000	0.00000	0.00000	
443.760	0.000	443.760	443.760	-675.000	0.000	0.000	0.000	0.00000	0.00000	0.00000	
467.120	0.000	467.120	467.120	-650.000	0.000	0.000	0.000	0.00000	0.00000	0.00000	
490.480	0.000	490.480	490.480	-625.000	0.000	0.000	0.000	0.00000	0.00000	0.00000	
513.840	0.000	513.840	513.840	-600.000	0.000	0.000	0.000	0.00000	0.00000	0.00000	
537.200	0.000	537.200	537.200	-575.000	0.000	0.000	0.000	0.00000	0.00000	0.00000	
560.560	0.000	560.560	560.560	-550.000	0.000	0.000	0.000	0.00000	0.00000	0.00000	
583.920	0.000	583.920	583.920	-525.000	0.000	0.000	0.000	0.00000	0.00000	0.00000	
607.280	0.000	607.280	607.280	-500.000	0.000	0.000	0.000	0.00000	0.00000	0.00000	
630.640	0.000	630.640	630.640	-475.000	0.000	0.000	0.000	0.00000	0.00000	0.00000	
654.000	0.000	654.000	654.000	-450.000	0.000	0.000	0.000	0.00000	0.00000	0.00000	
677.360	0.000	677.360	677.360	-425.000	0.000	0.000	0.000	0.00000	0.00000	0.00000	
700.720	0.000	700.720	700.720	-400.000	0.000	0.000	0.000	0.00000	0.00000	0.00000	
724.080	0.000	724.080	724.080	-375.000	0.000	0.000	0.000	0.00000	0.00000	0.00000	
747.440	0.000	747.440	747.440	-350.000	0.000	0.000	0.000	0.00000	0.00000	0.00000	
770.800	0.000	770.800	770.800	-325.000	0.000	0.000	0.000	0.00000	0.00000	0.00000	
794.160	0.000	794.160	794.160	-300.000	0.000	0.000	0.000	0.00000	0.00000	0.00000	
817.520	0.000	817.520	817.520	-275.000	0.000	0.000	0.000	0.00000	0.00000	0.00000	
840.880	0.000	840.880	840.880	-250.000	0.000	0.000	0.000	0.00000	0.00000	0.00000	
864.240	0.000	864.240	864.240	-225.000	0.000	0.000	0.000	0.00000	0.00000	0.00000	
887.600	0.000	887.600	887.600	-200.000	0.000	0.000	0.000	0.00000	0.00000	0.00000	
910.960	0.000	910.960	910.960	-175.000	0.000	0.000	0.000	0.00000	0.00000	0.00000	
934.320	0.000	934.320	934.320	-150.000	0.000	0.000	0.000	0.00000	0.00000	0.00000	
957.680	0.000	957.680	957.680	-125.000	0.000	0.000	0.000	0.00000	0.00000	0.00000	
981.040	0.000	981.040	981.040	-100.000	0.000	0.000	0.000	0.00000	0.00000	0.00000	
1004.400	0.000	1004.400	1004.400	-75.000	0.000	0.000	0.000	0.00000	0.00000	0.00000	
1027.760	0.000	1027.760	1027.760	-50.000	0.000	0.000	0.000	0.00000	0.00000	0.00000	
1051.120	0.000	1051.120	1051.120	-25.000	0.000	0.000	0.000	0.00000	0.00000	0.00000	
1074.480	0.000	1074.480	1074.480	0.000	0.000	0.000	0.000	0.00000	0.00000	0.00000	
1097.840	0.000	1097.840	1097.840	25.000	0.000	0.000	0.000	0.00000	0.00000	0.00000	
1121.200	0.000	1121.200	1121.200	50.000	0.000	0.000	0.000	0.00000	0.00000	0.00000	
1144.560	0.000	1144.560	1144.560	75.000	0.000	0.000	0.000	0.00000	0.00000	0.00000	
1167.920	0.000	1167.920	1167.920	100.000	0.000	0.000	0.000	0.00000	0.00000	0.00000	
1191.280	0.000	1191.280	1191.280	125.000	0.000	0.000	0.000	0.00000	0.00000	0.00000	
1214.640	0.000	1214.640	1214.640	150.000	0.000	0.000	0.000	0.00000	0.00000	0.00000	
1238.000	0.000	1238.000	1238.000	175.000	0.000	0.000	0.000	0.00000	0.00000	0.00000	
1261.360	0.000	1261.360	1261.360	200.000	0.000	0.000	0.000	0.00000	0.00000	0.00000	
1284.720	0.000	1284.720	1284.720	225.000	0.000	0.000	0.000	0.00000	0.00000	0.00000	
1308.080	0.000	1308.080	1308.080	250.000	0.000	0.000	0.000	0.00000	0.00000	0.00000	
1331.440	0.000	1331.440	1331.440	275.000	0.000	0.000	0.000	0.00000	0.00000	0.00000	
1354.800	0.000	1354.800	1354.800	300.000	0.000	0.000	0.000	0.00000	0.00000	0.00000	
1378.160	0.000	1378.160	1378.160	325.000	0.000	0.000	0.000	0.00000	0.00000	0.00000	
1401.520	0.000	1401.520	1401.520	350.000	0.000	0.000	0.000	0.00000	0.00000	0.00000	
1424.880	0.000	1424.880	1424.880	375.000	0.000	0.000	0.000	0.00000	0.00000	0.00000	
1448.240	0.000	1448.240	1448.240	400.000	0.000	0.000	0.000	0.00000	0.00000	0.00000	
1471.600	0.000	1471.600	1471.600	425.000	0.000	0.000	0.000	0.00000	0.00000	0.00000	
1494.960	0.000	1494.960	1494.960	450.000	0.000	0.000	0.000	0.00000	0.00000	0.00000	
1518.320	0.000	1518.320	1518.320	475.000	0.000	0.000	0.000	0.00000	0.00000	0.00000	
1541.680	0.000	1541.680	1541.680	500.000	0.000	0.000	0.000	0.00000	0.00000	0.00000	
1565.040	0.000	1565.040	1565.040	525.000							



Database:	EDM_Definitive	Local Co-ordinate Reference:	Well M07H - Slot M07H
Company:	EQT (Chevron Data) 02-13-21	TVD Reference:	GL at 1125.00' & 25' KB @ 1149.99Busft
Project:	Marshall County, WV Chevron	MD Reference:	GL at 1125.00' & 25' KB @ 1149.99Busft
Site:	Hines Prod EQT	North Reference:	True
Well:	M07H	Survey Calculation Method:	Minimum Curvature
Wellbore:	OH		
Design:	Hines M07H As Drilled		

Measured Depth (usft)	Inclination (°)	Azimuth (°)	Vertical Depth (usft)	Subsea Depth (usft)	+N/-S (usft)	+E/-W (usft)	Vertical Section (usft)	Dogleg Rate (°/100usft)	Build Rate (°/100usft)	Turn Rate (°/100usft)
1.00000	0.000	29.244	232.993	-917.005	1.383	0.560	-0.852	1.14626	0.68000	66.28013
1.00000	0.000	49.870	257.989	-892.009	1.590	0.869	-0.972	1.14755	0.88000	42.52009
1.00000	0.360	19.750	282.865	-857.015	1.182	1.203	-1.074	0.88941	-0.80000	-10.048003
1.00000	0.000	0.000	307.500	-842.016	1.170	1.400	-1.194	0.65735	-0.56000	-25.24005
1.00000	0.000	0.000	332.500	-843.019	1.170	1.617	-1.337	0.42209	-0.16000	-25.00000
1.00000	0.740	25.550	357.977	-792.021	2.744	1.841	-1.512	0.42749	-0.12000	-30.76006
1.00000	0.730	49.572	594.955	-645.033	6.214	2.979	-2.252	0.21377	-0.01361	16.64629
1.00000	0.010	46.160	636.960	-610.030	4.774	3.251	-2.336	0.39981	-0.37500	-11.90627
1.00000	0.000	0.000	667.960	-582.036	4.647	3.425	-2.408	0.34209	-0.83871	-10.64518
1.00000	0.000	0.000	598.961	-551.037	4.772	3.511	-2.473	0.61847	-0.45161	-50.19373
1.00000	0.990	2-117.30	628.961	-521.037	4.000	3.482	-2.519	1.25419	-0.03333	-443.9009
1.00000	0.850	230.300	659.960	-480.037	4.278	3.347	-2.477	0.96458	0.90323	-62.90335
1.00000	0.820	291.830	690.955	-459.040	4.396	3.094	-2.352	1.41954	1.41936	-1.93549
1.00000	0.730	280.640	721.952	-428.046	3.949	2.709	-2.147	1.10100	1.09678	-5.12904
1.00000	1.340	320.440	753.942	-398.055	3.373	2.182	-1.898	0.93773	0.87500	13.87503
1.00000	1.640	219.980	784.930	-365.067	2.736	1.605	-1.619	0.51580	0.32258	-14.51616
1.00000	0.650	2-107.0	815.917	-334.080	3.037	1.041	-1.280	0.23562	0.12903	-5.30647
1.00000	0.750	277.800	846.905	-303.093	3.220	0.541	-0.893	0.72475	-0.41936	-20.87101
1.00000	0.440	219.200	877.894	-272.103	3.310	0.147	-0.468	0.60093	-0.35484	-13.54941
1.00000	0.000	180.500	908.885	-241.113	-0.067	-0.112	0.031	1.17807	-0.16129	-47.41945
1.00000	0.000	177.200	940.875	-209.122	-0.883	-0.176	0.665	1.14627	-0.06250	-47.62510
1.00000	0.000	184.200	971.860	-178.132	-1.319	-0.090	1.395	1.34444	0.38710	-51.80656
1.00000	0.000	180.000	1,002.850	-147.144	-0.095	0.320	2.251	1.10742	0.67742	-31.58071
1.00000	0.000	180.000	1,033.839	-116.150	-0.395	0.740	3.244	1.06766	0.90323	19.93552
1.00000	0.550	180.000	1,064.814	-85.184	-0.400	1.240	4.459	1.00062	1.77420	-7.97098
1.00000	0.000	180.000	1,096.770	-53.222	-0.634	1.860	0.008	1.67276	1.59375	10.50002
1.00000	0.570	186.000	1,127.721	-22.273	-0.529	3.411	7.758	2.12700	1.70968	22.03230
1.00000	0.000	180.000	1,158.653	9.655	-0.372	3.899	9.781	2.13474	2.03226	9.67744
1.00000	0.000	180.000	1,189.589	39.568	-1.153	3.345	11.993	0.77154	0.64516	5.84517
1.00000	0.000	170.000	1,221.450	71.462	-0.425	3.709	14.438	1.37096	1.65625	7.71877
1.00000	0.000	170.000	1,252.335	102.337	-17.100	4.081	17.014	1.42595	1.35484	4.96775
1.00000	0.000	170.000	1,283.188	133.190	-20.177	4.348	19.764	1.59702	1.41936	7.54840
1.00000	0.000	170.000	1,314.321	164.024	-2.102	4.541	22.663	1.03254	1.00000	2.48388
1.00000	0.000	170.000	1,344.840	194.845	-26.700	4.653	25.623	0.65774	0.32258	7.41937
1.00000	0.000	180.000	1,376.849	226.851	-30.120	4.669	28.714	0.83543	0.75000	3.34376
1.00000	6.530	180.000	1,407.460	257.452	-3.722	4.599	31.739	0.79798	0.29032	6.58066
1.00000	0.000	184.890	1,438.245	288.247	-0.1277	4.365	34.742	1.05770	0.45161	8.32260
1.00000	0.920	187.500	1,469.020	319.032	-0.701	3.985	37.721	1.19206	0.54839	9.00002
1.00000	0.000	180.000	1,499.797	349.800	-4.1540	3.390	40.720	1.36990	1.12903	0.35485
1.00000	7.290	187.820	1,531.542	381.544	-49.806	2.649	43.829	0.83637	0.31250	6.15626
1.00000	0.000	180.210	1,562.289	412.292	-50.439	1.698	46.725	1.90073	0.22581	14.80648
1.00000	0.000	180.000	1,593.034	443.036	-50.271	0.661	49.579	0.89841	0.00000	-6.93550



EQT Survey Report

Database:	EDM_Definitive	Local Co-ordinate Reference:	Well M07H - Slot M07H
Company:	EQT (Chevron Data) 02-13-21	TVD Reference:	GL at 1125.00' & 25' KB @ 1149.998usft
Project:	Marathon County, WV Chevron	MD Reference:	GL at 1125.00' & 25' KB @ 1149.998usft
Site:	Roses Pad EQT	North Reference:	True
Well:	M07H	Survey Calculation Method:	Minimum Curvature
Wellbore:	OH		
Design:	Hines M07H As Drilled		

Measured Depth (usft)	Inclination (°)	Azimuth (°)	Vertical Depth (usft)	Subsea Depth (usft)	North (+N/-S) (usft)	East (+E/-W) (usft)	Vertical Section (usft)	Dogleg Rate (%/100usft)	Build Rate (%/100usft)	Turn Rate (%/100usft)
1,000.000	1.570	293.197	1,623.771	473.773	-60.189	-0.273	52.557	0.86147	0.67742	-4.05678
1,050.000	1.770	292.152	1,655.484	505.507	-61.265	-0.122	55.763	0.66982	0.62600	-2.18750
1,100.000	1.980	291.000	1,688.147	536.196	-62.325	0.207	55.033	1.46010	0.54839	-5.80325
1,150.000	2.200	289.750	1,717.851	567.880	-63.365	0.700	62.591	0.79634	0.73125	-3.87500
1,200.000	2.430	288.500	1,748.850	599.657	-64.379	1.179	68.129	0.92071	0.54839	-3.05152
1,250.000	2.680	287.250	1,779.240	629.242	-65.370	1.630	69.631	1.26709	-1.22581	2.25807
1,300.000	2.940	286.000	1,809.959	659.961	-66.338	2.059	72.900	1.75608	-1.67742	3.87098
1,350.000	3.210	284.750	1,840.712	690.714	-67.287	2.466	75.891	1.71517	-1.48387	6.83872
1,400.000	3.500	283.500	1,872.475	722.482	-68.206	2.850	78.772	0.67806	-0.53125	3.50001
1,450.000	3.800	282.250	1,903.227	753.264	-69.090	3.210	81.499	0.26633	-0.22581	-1.19355
1,500.000	4.120	281.000	1,934.051	784.053	-69.942	3.546	84.177	0.54026	-0.48387	2.06452
1,550.000	4.460	279.750	1,964.850	814.853	-70.769	3.859	86.711	1.25411	-0.61290	9.64518
1,600.000	4.820	278.500	1,995.629	845.630	-71.572	4.140	97.185	0.99975	-0.90845	-4.17606
1,650.000	5.200	277.250	2,026.383	876.384	-72.352	4.389	101.985	2.73103	-2.72223	-3.39880
1,700.000	5.600	276.000	2,057.107	907.108	-73.109	4.606	104.898	0.79665	-0.76405	1.56180
1,750.000	6.020	274.750	2,077.806	937.807	-73.844	4.791	106.982	0.71284	-0.70787	-2.91012
2,480.995	5.915	292.120	2,460.780	1,312.782	-121.798	-14.477	108.295	0.62133	-0.51685	17.75284
2,530.995	5.890	291.600	2,550.777	1,402.774	-122.625	-15.224	108.739	0.64408	-0.24444	43.95564
2,580.995	5.910	290.480	2,641.767	1,491.767	-123.429	-16.002	108.620	0.15862	-0.01124	13.25845
2,630.995	5.970	289.450	2,730.760	1,580.762	-124.192	-16.747	108.244	0.51571	-0.12360	26.93264
2,680.995	6.020	288.500	2,820.758	1,670.758	-124.926	-17.474	107.617	0.35487	-0.08688	37.80008
2,730.995	6.070	292.210	2,909.753	1,759.755	-125.623	-18.173	106.938	0.08990	-0.02247	-10.40452
2,780.995	6.090	290.290	2,999.749	1,849.752	-126.288	-18.846	106.223	0.25440	0.03333	30.08895
2,830.995	6.060	288.380	3,088.746	1,938.748	-126.920	-19.410	105.400	0.06991	0.06742	-5.59551
3,000.995	6.030	290.070	3,178.742	2,028.742	-127.524	-19.898	104.420	0.22267	0.15556	14.80003
3,050.995	6.000	288.160	3,267.737	2,117.737	-128.100	-20.341	104.144	1.37693	0.17978	115.69686
3,300.990	5.990	102.540	3,357.714	2,207.716	-128.650	-20.751	105.233	0.91295	0.81111	20.62226
3,350.990	5.970	94.400	3,446.692	2,297.695	-129.177	-21.137	106.216	1.00071	-0.75281	-31.55063
3,400.990	5.950	86.260	3,535.660	2,387.685	-129.680	-21.500	106.969	0.21484	-0.20000	-5.41112
3,450.990	5.930	78.120	3,625.627	2,477.679	-130.157	-21.840	106.514	0.29228	-0.23596	-15.82026
3,500.990	5.910	70.000	3,715.573	2,567.676	-130.600	-22.158	106.405	0.00296	-0.07778	-5.91112
3,550.992	5.890	61.860	3,804.670	2,657.672	-131.000	-22.470	106.102	0.24499	0.06742	-27.80905
3,600.992	5.870	53.720	3,894.667	2,747.670	-131.367	-22.763	105.688	0.20486	-0.20000	-6.04446
3,650.992	5.850	45.580	3,983.662	2,837.669	-131.702	-23.030	105.429	0.31372	-0.25943	-54.29224
3,700.992	5.830	37.440	4,073.660	2,923.668	-132.000	-23.271	105.128	0.27021	0.24444	37.22230
4,000.990	5.830	5.185	4,073.674	2,923.676	-126.759	-12.071	105.128	0.00000	0.00000	0.00000
4,050.990	5.810	1.710	4,162.580	3,012.582	-127.000	-12.000	103.896	4.15774	4.07903	41.04879
4,100.990	5.790	0.750	4,252.100	3,102.105	-127.200	-12.800	100.951	4.22071	4.22223	1.15556
4,150.990	5.770	0.000	4,340.000	3,190.020	-127.300	0.630	98.112	3.33226	2.68540	12.80001
4,200.990	5.750	0.000	4,428.500	3,278.543	-127.300	0.000	97.592	2.33511	1.35556	10.21113
4,250.990	5.730	0.000	4,515.125	3,365.127	-127.300	0.000	98.886	3.33270	3.33000	3.38203



EQT
Survey Report

Database:	EDM - Definitive	Local Co-ordinate Reference:	Well M07H - Slot M07H
Company:	EQT (Chevron Data) 02-13-21	TVD Reference:	GL at 1125.00' & 25' KB @ 1149.998usft
Project:	Marshall County, WV Chevron	MD Reference:	GL at 1125.00' & 25' KB @ 1149.998usft
Site:	Hines Pad EQT	North Reference:	True
Well:	M07H	Survey Calculation Method:	Minimum Curvature
Wellbore:	OH		
Design:	Hines M07H As Drilled		

Measured Depth (usft)	Inclination (°)	Azimuth (°)	Vertical Depth (usft)	Subsea Depth (usft)	MD to Survey North Reference Surf Calculation		Vertical Section (usft)	Dogleg Rate (°/100usft)	Build Rate (°/100usft)	Turn Rate (°/100usft)
					+N/-S (usft)	+E/-W (usft)				
10.13	22.140	107.945	4,601.398	3,461.400	-78.473	81.678	99.480	4.93334	3.94445	-7.80002
11.13	22.140	107.945	4,684.863	3,534.865	-83.787	87.921	99.892	4.93109	4.46068	-6.08950
12.13	22.140	107.945	4,768.328	3,608.330	-89.101	94.164	100.304	4.92884	3.99027	-4.34002
13.13	22.140	107.945	4,851.793	3,681.795	-94.415	100.407	100.716	4.92659	3.01883	-2.59054
14.13	22.140	107.945	4,935.258	3,755.260	-99.729	106.650	101.128	4.92434	2.04739	-0.84106
15.13	22.140	107.945	5,018.723	3,828.725	-105.043	112.893	101.540	4.92209	1.07595	0.90842
16.13	22.140	107.945	5,102.188	3,902.190	-110.357	119.136	101.952	4.91984	0.10451	2.65888
17.13	22.140	107.945	5,185.653	3,975.655	-115.671	125.379	102.364	4.91759	-0.86693	4.40934
18.13	22.140	107.945	5,269.118	4,049.120	-120.985	131.622	102.776	4.91534	-1.89549	6.15980
19.13	22.140	107.945	5,352.583	4,122.585	-126.299	137.865	103.188	4.91309	-2.92405	7.91026
20.13	22.140	107.945	5,436.048	4,196.050	-131.613	144.108	103.600	4.91084	-3.95261	9.66072
21.13	22.140	107.945	5,519.513	4,269.515	-136.927	150.351	104.012	4.90859	-4.98117	11.41118
22.13	22.140	107.945	5,602.978	4,342.980	-142.241	156.594	104.424	4.90634	-6.00973	13.16164
23.13	22.140	107.945	5,686.443	4,416.445	-147.555	162.837	104.836	4.90409	-7.03829	14.91210
24.13	22.140	107.945	5,769.908	4,489.910	-152.869	169.080	105.248	4.90184	-8.06685	16.66256
25.13	22.140	107.945	5,853.373	4,563.375	-158.183	175.323	105.660	4.89959	-9.09541	18.41302
26.13	22.140	107.945	5,936.838	4,636.840	-163.497	181.566	106.072	4.89734	-10.12397	20.16348
27.13	22.140	107.945	6,020.303	4,710.305	-168.811	187.809	106.484	4.89509	-11.15253	21.91394
28.13	22.140	107.945	6,103.768	4,783.770	-174.125	194.052	106.896	4.89284	-12.18109	23.66440
29.13	22.140	107.945	6,187.233	4,857.235	-179.439	200.295	107.308	4.89059	-13.20965	25.41486
30.13	22.140	107.945	6,270.698	4,930.690	-184.753	206.538	107.720	4.88834	-14.23821	27.16532
31.13	22.140	107.945	6,354.163	5,004.155	-190.067	212.781	108.132	4.88609	-15.26677	28.91578
32.13	22.140	107.945	6,437.628	5,077.620	-195.381	219.024	108.544	4.88384	-16.29533	30.66624
33.13	22.140	107.945	6,521.093	5,151.085	-200.695	225.267	108.956	4.88159	-17.32389	32.41670
34.13	22.140	107.945	6,604.558	5,224.550	-206.009	231.510	109.368	4.87934	-18.35245	34.16716
35.13	22.140	107.945	6,688.023	5,298.015	-211.323	237.753	109.780	4.87709	-19.38101	35.91762
36.13	22.140	107.945	6,771.488	5,371.480	-216.637	244.000	110.192	4.87484	-20.40957	37.66808
37.13	22.140	107.945	6,854.953	5,444.945	-221.951	250.243	110.604	4.87259	-21.43813	39.41854
38.13	22.140	107.945	6,938.418	5,518.410	-227.265	256.486	111.016	4.87034	-22.46669	41.16900
39.13	22.140	107.945	7,021.883	5,591.875	-232.579	262.729	111.428	4.86809	-23.49525	42.91946
40.13	22.140	107.945	7,105.348	5,665.340	-237.893	268.972	111.840	4.86584	-24.52381	44.66992
41.13	22.140	107.945	7,188.813	5,738.805	-243.207	275.215	112.252	4.86359	-25.55237	46.42038
42.13	22.140	107.945	7,272.278	5,812.270	-248.521	281.458	112.664	4.86134	-26.58093	48.17084
43.13	22.140	107.945	7,355.743	5,885.735	-253.835	287.701	113.076	4.85909	-27.60949	49.92130
44.13	22.140	107.945	7,439.208	5,959.200	-259.149	293.944	113.488	4.85684	-28.63805	51.67176
45.13	22.140	107.945	7,522.673	6,032.665	-264.463	300.187	113.900	4.85459	-29.66661	53.42222
46.13	22.140	107.945	7,606.138	6,106.130	-269.777	306.430	114.312	4.85234	-30.69517	55.17268
47.13	22.140	107.945	7,689.603	6,179.595	-275.091	312.673	114.724	4.85009	-31.72373	56.92314
48.13	22.140	107.945	7,773.068	6,253.060	-280.405	318.916	115.136	4.84784	-32.75229	58.67360
49.13	22.140	107.945	7,856.533	6,326.525	-285.719	325.159	115.548	4.84559	-33.78085	60.42406
50.13	22.140	107.945	7,940.000	6,400.000	-291.033	331.402	115.960	4.84334	-34.80941	62.17452
51.13	22.140	107.945	8,023.465	6,473.465	-296.347	337.645	116.372	4.84109	-35.83797	63.92498
52.13	22.140	107.945	8,106.930	6,546.930	-301.661	343.888	116.784	4.83884	-36.86653	65.67544
53.13	22.140	107.945	8,190.395	6,620.395	-306.975	350.131	117.196	4.83659	-37.89509	67.42590
54.13	22.140	107.945	8,273.860	6,693.860	-312.289	356.374	117.608	4.83434	-38.92365	69.17636
55.13	22.140	107.945	8,357.325	6,767.325	-317.603	362.617	118.020	4.83209	-39.95221	70.92682
56.13	22.140	107.945	8,440.790	6,840.790	-322.917	368.860	118.432	4.82984	-40.98077	72.67728
57.13	22.140	107.945	8,524.255	6,914.255	-328.231	375.103	118.844	4.82759	-42.00933	74.42774
58.13	22.140	107.945	8,607.720	6,987.720	-333.545	381.346	119.256	4.82534	-43.03789	76.17820
59.13	22.140	107.945	8,691.185	7,061.185	-338.859	387.589	119.668	4.82309	-44.06645	77.92866
60.13	22.140	107.945	8,774.650	7,134.650	-344.173	393.832	120.080	4.82084	-45.09501	79.67912
61.13	22.140	107.945	8,858.115	7,208.115	-349.487	400.075	120.492	4.81859	-46.12357	81.42958
62.13	22.140	107.945	8,941.580	7,281.580	-354.801	406.318	120.904	4.81634	-47.15213	83.18004
63.13	22.140	107.945	9,025.045	7,355.045	-360.115	412.561	121.316	4.81409	-48.18069	84.93050
64.13	22.140	107.945	9,108.510	7,428.510	-365.429	418.804	121.728	4.81184	-49.20925	86.68096
65.13	22.140	107.945	9,191.975	7,501.975	-370.743	425.047	122.140	4.80959	-50.23781	88.43142
66.13	22.140	107.945	9,275.440	7,575.440	-376.057	431.290	122.552	4.80734	-51.26637	90.18188
67.13	22.140	107.945	9,358.905	7,648.905	-381.371	437.533	122.964	4.80509	-52.29493	91.93234
68.13	22.140	107.945	9,442.370	7,722.370	-386.685	443.776	123.376	4.80284	-53.32349	93.68280
69.13	22.140	107.945	9,525.835	7,795.835	-392.000	449.999	123.788	4.80059	-54.35205	95.43326
70.13	22.140	107.945	9,609.300	7,869.300	-397.314	456.242	124.200	4.79834	-55.38061	97.18372
71.13	22.140	107.945	9,692.765	7,942.765	-402.628	462.485	124.612	4.79609	-56.40917	98.93418
72.13	22.140	107.945	9,776.230	8,016.230	-407.942	468.728	125.024	4.79384	-57.43773	100.68464
73.13	22.140	107.945	9,859.695	8,089.695	-413.256	474.971	125.436	4.79159	-58.46629	102.43510
74.13	22.140	107.945	9,943.160	8,163.160	-418.570	481.214	125.848	4.78934	-59.49485	104.18556
75.13	22.140	107.945	10,026.625	8,236.625	-423.884	487.457	126.260	4.78709	-60.52341	105.93602
76.13	22.140	107.945	10,110.090	8,310.090	-429.198	493.700	126.672	4.78484	-61.55197	107.68648
77.13	22.140	107.945	10,193.555	8,383.555	-434.512	499.943	127.084	4.78259	-62.58053	109.43694
78.13	22.140	107.945	10,277.020	8,457.020	-439.826	506.186	127.496	4.78034	-63.60909	111.18740
79.13	22.140	107.945	10,360.485	8,530.485	-445.140	512.429	127.908	4.77809	-64.63765	112.93786
80.13	22.140	107.945	10,443.950	8,603.950	-450.454	518.672	128.320	4.77584	-65.66621	114.68832
81.13	22.140	107.945	10,527.415	8,677.415	-455.768	524.915	128.732	4.77359	-66.69477	116.43878
82.13	22.140	107.945	10,610.880	8,750.880	-461.082	531.158	129.144	4.77134	-67.72333	118.18924
83.13	22.140	107.945	10,694.345	8,824.345	-466.396	537.401	129.556	4.76909	-68.75189	119.93970
84.13	22.140	107.945	10,777.810	8,897.810	-471.710	543.644	130.000	4.76684	-69.78045	121.69016
85.13	22.140	107.945	10,861.275	8,971.275	-477.024	549.887	130.412	4.76459	-70.80901	123.44062
86.13	22.140	107.945	10,944.740	9,044.740	-482.338	556.130	130.824	4.76234	-71.83757	125.19108
87.13	22.140	107.945	11,028.205	9,118.205	-487.652	562.373	131.236	4.76009	-72.86613	126.94154
88.13	22.140	107.945	11,111.670	9,191.670	-492.966	568.616	131.648	4.75784	-73.89469	128.69200
89.13	22.140	107.945	11,195.135	9,265.135	-498.280	574.859	132.060	4.75559	-74.92325	130.44246
90.13	22.140	107.945	11,278.600	9,338.600	-503.594	581.102	132.472	4.75334	-75.95181	132.19292
91.13	22.140	107.945	11,362.065	9,412.065	-508.908	587.345	132.884	4.75109	-76.98037	133.94338
92.13	22.140	107.945	11,445.530	9,485.530	-514.222	593.588	133.296	4.74		



EQT
Survey Report

Database:	EDM_Definitive	Local Co-ordinate Reference:	Well M07H - Sici M07H
Company:	EQT (Chevron Data) 02-13-21	TVD Reference:	GL at 1125.00' & 25' KB @ 1149.908usft
Project:	Monroe County, WV Chevron	MD Reference:	GL at 1125.00' & 25' KB @ 1149.908usft
Site:	Hines Pad EQT	North Reference:	True
Well:	M07H	Survey Calculation Method:	Minimum Curvature
Wellbore:	OH		
Design:	Hines M07H As Drilled		

Measured Depth (usft)	Inclination (°)	Azimuth (°)	Vertical Depth (usft)	Subsea Depth (usft)	MD Reference		Vertical Section (usft)	Dogleg Rate (°/100usft)	Build Rate (°/100usft)	Turn Rate (°/100usft)
					+N/-S (usft)	+E/-W (usft)				
1,000.00	0.000	0.000	1,000.00	1,000.00	0.000	0.000	1,000.00	0.0000	0.0000	0.0000
1,001.00	0.000	0.000	1,001.00	1,001.00	0.000	0.000	1,001.00	0.0000	0.0000	0.0000
1,002.00	0.000	0.000	1,002.00	1,002.00	0.000	0.000	1,002.00	0.0000	0.0000	0.0000
1,003.00	0.000	0.000	1,003.00	1,003.00	0.000	0.000	1,003.00	0.0000	0.0000	0.0000
1,004.00	0.000	0.000	1,004.00	1,004.00	0.000	0.000	1,004.00	0.0000	0.0000	0.0000
1,005.00	0.000	0.000	1,005.00	1,005.00	0.000	0.000	1,005.00	0.0000	0.0000	0.0000
1,006.00	0.000	0.000	1,006.00	1,006.00	0.000	0.000	1,006.00	0.0000	0.0000	0.0000
1,007.00	0.000	0.000	1,007.00	1,007.00	0.000	0.000	1,007.00	0.0000	0.0000	0.0000
1,008.00	0.000	0.000	1,008.00	1,008.00	0.000	0.000	1,008.00	0.0000	0.0000	0.0000
1,009.00	0.000	0.000	1,009.00	1,009.00	0.000	0.000	1,009.00	0.0000	0.0000	0.0000
1,010.00	0.000	0.000	1,010.00	1,010.00	0.000	0.000	1,010.00	0.0000	0.0000	0.0000
1,011.00	0.000	0.000	1,011.00	1,011.00	0.000	0.000	1,011.00	0.0000	0.0000	0.0000
1,012.00	0.000	0.000	1,012.00	1,012.00	0.000	0.000	1,012.00	0.0000	0.0000	0.0000
1,013.00	0.000	0.000	1,013.00	1,013.00	0.000	0.000	1,013.00	0.0000	0.0000	0.0000
1,014.00	0.000	0.000	1,014.00	1,014.00	0.000	0.000	1,014.00	0.0000	0.0000	0.0000
1,015.00	0.000	0.000	1,015.00	1,015.00	0.000	0.000	1,015.00	0.0000	0.0000	0.0000
1,016.00	0.000	0.000	1,016.00	1,016.00	0.000	0.000	1,016.00	0.0000	0.0000	0.0000
1,017.00	0.000	0.000	1,017.00	1,017.00	0.000	0.000	1,017.00	0.0000	0.0000	0.0000
1,018.00	0.000	0.000	1,018.00	1,018.00	0.000	0.000	1,018.00	0.0000	0.0000	0.0000
1,019.00	0.000	0.000	1,019.00	1,019.00	0.000	0.000	1,019.00	0.0000	0.0000	0.0000
1,020.00	0.000	0.000	1,020.00	1,020.00	0.000	0.000	1,020.00	0.0000	0.0000	0.0000
1,021.00	0.000	0.000	1,021.00	1,021.00	0.000	0.000	1,021.00	0.0000	0.0000	0.0000
1,022.00	0.000	0.000	1,022.00	1,022.00	0.000	0.000	1,022.00	0.0000	0.0000	0.0000
1,023.00	0.000	0.000	1,023.00	1,023.00	0.000	0.000	1,023.00	0.0000	0.0000	0.0000
1,024.00	0.000	0.000	1,024.00	1,024.00	0.000	0.000	1,024.00	0.0000	0.0000	0.0000
1,025.00	0.000	0.000	1,025.00	1,025.00	0.000	0.000	1,025.00	0.0000	0.0000	0.0000
1,026.00	0.000	0.000	1,026.00	1,026.00	0.000	0.000	1,026.00	0.0000	0.0000	0.0000
1,027.00	0.000	0.000	1,027.00	1,027.00	0.000	0.000	1,027.00	0.0000	0.0000	0.0000
1,028.00	0.000	0.000	1,028.00	1,028.00	0.000	0.000	1,028.00	0.0000	0.0000	0.0000
1,029.00	0.000	0.000	1,029.00	1,029.00	0.000	0.000	1,029.00	0.0000	0.0000	0.0000
1,030.00	0.000	0.000	1,030.00	1,030.00	0.000	0.000	1,030.00	0.0000	0.0000	0.0000
1,031.00	0.000	0.000	1,031.00	1,031.00	0.000	0.000	1,031.00	0.0000	0.0000	0.0000
1,032.00	0.000	0.000	1,032.00	1,032.00	0.000	0.000	1,032.00	0.0000	0.0000	0.0000
1,033.00	0.000	0.000	1,033.00	1,033.00	0.000	0.000	1,033.00	0.0000	0.0000	0.0000
1,034.00	0.000	0.000	1,034.00	1,034.00	0.000	0.000	1,034.00	0.0000	0.0000	0.0000
1,035.00	0.000	0.000	1,035.00	1,035.00	0.000	0.000	1,035.00	0.0000	0.0000	0.0000
1,036.00	0.000	0.000	1,036.00	1,036.00	0.000	0.000	1,036.00	0.0000	0.0000	0.0000
1,037.00	0.000	0.000	1,037.00	1,037.00	0.000	0.000	1,037.00	0.0000	0.0000	0.0000
1,038.00	0.000	0.000	1,038.00	1,038.00	0.000	0.000	1,038.00	0.0000	0.0000	0.0000
1,039.00	0.000	0.000	1,039.00	1,039.00	0.000	0.000	1,039.00	0.0000	0.0000	0.0000
1,040.00	0.000	0.000	1,040.00	1,040.00	0.000	0.000	1,040.00	0.0000	0.0000	0.0000
1,041.00	0.000	0.000	1,041.00	1,041.00	0.000	0.000	1,041.00	0.0000	0.0000	0.0000
1,042.00	0.000	0.000	1,042.00	1,042.00	0.000	0.000	1,042.00	0.0000	0.0000	0.0000
1,043.00	0.000	0.000	1,043.00	1,043.00	0.000	0.000	1,043.00	0.0000	0.0000	0.0000
1,044.00	0.000	0.000	1,044.00	1,044.00	0.000	0.000	1,044.00	0.0000	0.0000	0.0000
1,045.00	0.000	0.000	1,045.00	1,045.00	0.000	0.000	1,045.00	0.0000	0.0000	0.0000
1,046.00	0.000	0.000	1,046.00	1,046.00	0.000	0.000	1,046.00	0.0000	0.0000	0.0000
1,047.00	0.000	0.000	1,047.00	1,047.00	0.000	0.000	1,047.00	0.0000	0.0000	0.0000
1,048.00	0.000	0.000	1,048.00	1,048.00	0.000	0.000	1,048.00	0.0000	0.0000	0.0000
1,049.00	0.000	0.000	1,049.00	1,049.00	0.000	0.000	1,049.00	0.0000	0.0000	0.0000
1,050.00	0.000	0.000	1,050.00	1,050.00	0.000	0.000	1,050.00	0.0000	0.0000	0.0000
1,051.00	0.000	0.000	1,051.00	1,051.00	0.000	0.000	1,051.00	0.0000	0.0000	0.0000
1,052.00	0.000	0.000	1,052.00	1,052.00	0.000	0.000	1,052.00	0.0000	0.0000	0.0000
1,053.00	0.000	0.000	1,053.00	1,053.00	0.000	0.000	1,053.00	0.0000	0.0000	0.0000
1,054.00	0.000	0.000	1,054.00	1,054.00	0.000	0.000	1,054.00	0.0000	0.0000	0.0000
1,055.00	0.000	0.000	1,055.00	1,055.00	0.000	0.000	1,055.00	0.0000	0.0000	0.0000
1,056.00	0.000	0.000	1,056.00	1,056.00	0.000	0.000	1,056.00	0.0000	0.0000	0.0000
1,057.00	0.000	0.000	1,057.00	1,057.00	0.000	0.000	1,057.00	0.0000	0.0000	0.0000
1,058.00	0.000	0.000	1,058.00	1,058.00	0.000	0.000	1,058.00	0.0000	0.0000	0.0000
1,059.00	0.000	0.000	1,059.00	1,059.00	0.000	0.000	1,059.00	0.0000	0.0000	0.0000
1,060.00	0.000	0.000	1,060.00	1,060.00	0.000	0.000	1,060.00	0.0000	0.0000	0.0000
1,061.00	0.000	0.000	1,061.00	1,061.00	0.000	0.000	1,061.00	0.0000	0.0000	0.0000
1,062.00	0.000	0.000	1,062.00	1,062.00	0.000	0.000	1,062.00	0.0000	0.0000	0.0000
1,063.00	0.000	0.000	1,063.00	1,063.00	0.000	0.000	1,063.00	0.0000	0.0000	0.0000
1,064.00	0.000	0.000	1,064.00	1,064.00	0.000	0.000	1,064.00	0.0000	0.0000	0.0000
1,065.00	0.000	0.000	1,065.00	1,065.00	0.000	0.000	1,065.00	0.0000	0.0000	0.0000
1,066.00	0.000	0.000	1,066.00	1,066.00	0.000	0.000	1,066.00	0.0000	0.0000	0.0000
1,067.00	0.000	0.000	1,067.00	1,067.00	0.000	0.000	1,067.00	0.0000	0.0000	0.0000
1,068.00	0.000	0.000	1,068.00	1,068.00	0.000	0.000	1,068.00	0.0000	0.0000	0.0000
1,069.00	0.000	0.000	1,069.00	1,069.00	0.000	0.000	1,069.00	0.0000	0.0000	0.0000
1,070.00	0.000	0.000	1,070.00	1,070.00	0.000	0.000	1,070.00	0.0000	0.0000	0.0000
1,071.00	0.000	0.000	1,071.00	1,071.00	0.000	0.000	1,071.00	0.0000	0.0000	0.0000
1,072.00	0.000	0.000	1,072.00	1,072.00	0.000	0.000	1,072.00	0.0000	0.0000	0.0000
1,073.00	0.000	0.000	1,073.00	1,073.00	0.000	0.000	1,073.00	0.0000	0.0000	0.0000
1,074.00	0.000	0.000	1,074.00	1,074.00	0.000	0.000	1,074.00	0.0000	0.0000	0.0000
1,075.00	0.000	0.000	1,075.00	1,075.00	0.000	0.000	1,075.00	0.0000	0.0000	0.0000
1,076.00	0.000	0.000	1,076.00	1,076.00	0.000	0.000	1,076.00	0.0000	0.0000	0.0000
1,077.00	0.000	0.000	1,077.00	1,077.00	0.000	0.000	1,077.00	0.0000	0.0000	0.0000
1,078.00	0.000	0.000	1,078.00	1,078.00	0.000	0.000	1,078.00	0.0000	0.0000	0.0000
1,079.00	0.000	0.000	1,079.00	1,079.00	0.000	0.000	1,079.00	0.0000	0.0000	0.0000
1,080.00	0.000	0.000	1,080.00	1,080.00	0.000	0.000	1,080.00	0.0000	0.0000	0.0000
1,081.00	0.000	0.000	1,081.00	1,081.00	0.000	0.000				



Database:	EDM Definitive	Local Co-ordinate Reference:	Well M07H - Slot M07H
Company:	EQT (Chevron Data) 02-13-21	TVD Reference:	GL at 1125.00' & 25' KB @ 1149.998usft
Project:	Mason County, WV Chevron	MD Reference:	GL at 1125.00' & 25' KB @ 1149.998usft
Site:	Hines Pad EQT	North Reference:	True
Well:	M07H	Survey Calculation Method:	Minimum Curvature
Wellbore:	OH		
Design:	Hines M07H Ax Drilled		

Measured Depth (usft)	Inclination (°)	Azimuth (°)	Vertical Depth (usft)	Subsea Depth (usft)	North-South		Vertical Section (usft)	Dogleg Rate (°/100usft)	Build Rate (°/100usft)	Turn Rate (°/100usft)
					+N/-S (usft)	+E/-W (usft)				
12,000.00	89.500	165.850	6,373.078	5,223.521	-4,377.801	3,386.001	5,373.078	2.87708	0.06742	1.51112
12,050.00	89.500	165.850	6,373.078	5,223.521	-4,377.801	3,386.001	5,373.078	2.87708	0.06742	1.51112
12,100.00	89.500	165.850	6,373.078	5,223.521	-4,377.801	3,386.001	5,373.078	2.87708	0.06742	1.51112
12,150.00	89.500	165.850	6,373.078	5,223.521	-4,377.801	3,386.001	5,373.078	2.87708	0.06742	1.51112
12,200.00	89.500	165.850	6,373.078	5,223.521	-4,377.801	3,386.001	5,373.078	2.87708	0.06742	1.51112
12,250.00	89.485	165.850	6,384.725	5,234.731	-5,020.775	3,452.457	6,064.110	3.85512	-0.10112	-3.86394
12,300.00	89.510	165.850	6,385.537	5,235.539	-5,102.769	3,487.042	6,152.611	2.87708	0.06742	-2.67641
12,350.00	89.420	165.550	6,368.377	5,236.379	-5,154.791	3,524.076	6,242.316	0.34800	-0.10000	-0.33333
12,400.00	89.320	165.300	6,367.356	5,237.358	-5,260.885	3,558.128	6,330.861	2.62230	-0.11230	2.62023
12,450.00	89.480	165.480	6,368.298	5,238.301	-5,350.465	3,591.727	6,420.049	1.56560	0.17778	1.55556
12,500.00	89.380	167.000	6,389.184	5,239.186	-5,433.107	3,624.731	6,508.348	2.76620	-0.11236	-2.76405
12,550.00	89.450	163.820	6,390.093	5,240.095	-5,514.021	3,661.759	6,597.079	3.57372	0.07865	-3.57304
12,600.00	89.510	167.380	6,390.911	5,240.913	-5,592.285	3,700.118	6,687.017	7.46889	0.06667	-7.46890
12,650.00	89.420	168.100	6,381.751	5,241.753	-5,660.257	3,754.313	6,776.847	1.20411	-0.10300	1.20500
12,700.00	89.420	168.170	6,352.653	5,242.654	-5,744.879	3,799.927	6,865.787	2.25832	0.00000	2.25943
12,750.00	89.450	162.750	6,383.530	5,243.532	-5,822.853	3,842.443	6,954.773	2.89894	0.03371	2.89988
12,800.00	89.290	163.870	6,394.508	5,244.511	-5,902.364	3,882.415	7,043.699	1.27113	-0.17978	1.25843
12,850.00	89.500	165.150	6,395.612	5,245.615	-5,983.544	3,920.307	7,133.470	2.01337	-0.26667	2.60001
12,900.00	89.410	165.430	6,367.241	5,247.244	-5,000.145	3,956.802	7,222.151	0.62289	0.06742	-0.62023
12,950.00	89.480	165.030	6,358.616	5,248.618	-5,147.020	3,994.134	7,311.676	0.04006	0.03333	0.02222
13,000.00	89.200	165.200	6,389.905	5,249.907	-5,227.000	4,031.186	7,400.615	0.24537	0.06742	-0.23596
13,050.00	89.200	164.470	6,401.148	5,251.150	-5,308.504	4,068.964	7,489.411	0.92126	0.00000	-0.92135



EQT
Survey Report

Database:	EDM, Definitive	Local Co-ordinate Reference:	Well M07H - Slot M07H
Company:	EQT (Chevron Data) 02-13-21	TVD Reference:	GL at 1125.00' & 25' KB @ 1149.998usft
Project:	Marshall County, WV Chevron	MD Reference:	GL at 1125.00' & 25' KB @ 1149.998usft
Site:	Winn Field EOT	North Reference:	True
Well:	M07H	Survey Calculation Method:	Minimum Curvature
Wellbore:	OH		
Design:	Single M07H As Drilled		

Measured Depth (usft)	Inclination (°)	Azimuth (°)	Vertical Depth (usft)	Subsea Depth (usft)	North Reference		Vertical Section (usft)	Dogleg Rate (°/100usft)	Build Rate (°/100usft)	Turn Rate (°/100usft)
					+N/-S (usft)	+E/-W (usft)				
15,000.00	89.200	161.570	6,421.713	5,271.716	-7,862.048	4,752.901	9,179.994	0.93384	-0.03333	0.93334
15,050.00	89.320	164.320	6,422.863	5,272.865	-7,941.294	4,793.375	9,268.931	3.09258	0.13483	3.08989
15,100.00	89.320	165.810	6,423.931	5,273.933	-8,022.897	4,831.314	9,358.706	1.65544	0.00000	1.65556
15,150.00	89.480	168.160	6,424.863	5,274.866	-8,104.802	4,866.106	9,447.224	2.64642	0.17978	2.64045
15,200.00	89.510	168.510	6,425.648	5,275.650	-8,187.737	4,896.383	9,535.428	1.29253	0.03371	1.29214
15,250.00	89.380	169.340	6,426.510	5,276.512	-8,271.002	4,929.805	9,623.506	0.14991	-0.14607	0.03371
15,300.00	89.580	170.780	6,427.484	5,277.486	-8,355.599	4,960.495	9,712.398	1.59991	0.00000	1.60000



EQT
Survey Report

Database:	EDM_Definitive	Local Co-ordinate Reference:	Well M07H - Slot M07H
Company:	EQT (Chevron Data) 02-13-21	TVD Reference:	GL at 1125.00' & 25' KB @ 1149.998usft
Project:	Monaca Cavity, WV Chevron	MD Reference:	GL at 1125.00' & 25' KB @ 1149.998usft
Site:	Hines Pad EQT	North Reference:	True
Well:	M07H	Survey Calculation Method:	Minimum Curvature
Wellbore:	OH		
Design:	Hines M07H As Drilled		

Measured Depth (usft)	Inclination (°)	Azimuth (°)	Vertical Depth (usft)	Subsea Depth (usft)	North Coordinate		Vertical Section (usft)	Dogleg Rate (°/100usft)	Build Rate (°/100usft)	Turn Rate (°/100usft)
					+N/-S (usft)	+E/-W (usft)				
17,000.00	89.540	158.760	6,428.447	5,276.445	-8,500.352	5,379.054	10,607.703	0.26109	-0.20067	0.06085
17,010.00	89.540	158.760	6,430.978	5,280.978	-8,500.352	5,379.054	10,607.703	0.26109	-0.20067	0.06085
17,020.00	89.540	158.760	6,433.509	5,285.509	-8,500.352	5,379.054	10,607.703	0.26109	-0.20067	0.06085
17,030.00	89.540	158.760	6,436.040	5,290.040	-8,500.352	5,379.054	10,607.703	0.26109	-0.20067	0.06085
17,040.00	89.540	158.760	6,438.571	5,294.571	-8,500.352	5,379.054	10,607.703	0.26109	-0.20067	0.06085
17,050.00	89.540	158.760	6,441.102	5,299.102	-8,500.352	5,379.054	10,607.703	0.26109	-0.20067	0.06085
17,060.00	89.540	158.760	6,443.633	5,303.633	-8,500.352	5,379.054	10,607.703	0.26109	-0.20067	0.06085
17,070.00	89.540	158.760	6,446.164	5,308.164	-8,500.352	5,379.054	10,607.703	0.26109	-0.20067	0.06085
17,080.00	89.540	158.760	6,448.695	5,312.695	-8,500.352	5,379.054	10,607.703	0.26109	-0.20067	0.06085
17,090.00	89.540	158.760	6,451.226	5,317.226	-8,500.352	5,379.054	10,607.703	0.26109	-0.20067	0.06085
17,100.00	89.540	158.760	6,453.757	5,321.757	-8,500.352	5,379.054	10,607.703	0.26109	-0.20067	0.06085
17,110.00	89.540	158.760	6,456.288	5,326.288	-8,500.352	5,379.054	10,607.703	0.26109	-0.20067	0.06085
17,120.00	89.540	158.760	6,458.819	5,330.819	-8,500.352	5,379.054	10,607.703	0.26109	-0.20067	0.06085
17,130.00	89.540	158.760	6,461.350	5,335.350	-8,500.352	5,379.054	10,607.703	0.26109	-0.20067	0.06085
17,140.00	89.540	158.760	6,463.881	5,339.881	-8,500.352	5,379.054	10,607.703	0.26109	-0.20067	0.06085
17,150.00	89.540	158.760	6,466.412	5,344.412	-8,500.352	5,379.054	10,607.703	0.26109	-0.20067	0.06085
17,160.00	89.540	158.760	6,468.943	5,348.943	-8,500.352	5,379.054	10,607.703	0.26109	-0.20067	0.06085
17,170.00	89.540	158.760	6,471.474	5,353.474	-8,500.352	5,379.054	10,607.703	0.26109	-0.20067	0.06085
17,180.00	89.540	158.760	6,474.005	5,358.005	-8,500.352	5,379.054	10,607.703	0.26109	-0.20067	0.06085
17,190.00	89.540	158.760	6,476.536	5,362.536	-8,500.352	5,379.054	10,607.703	0.26109	-0.20067	0.06085
17,200.00	89.540	158.760	6,479.067	5,367.067	-8,500.352	5,379.054	10,607.703	0.26109	-0.20067	0.06085
17,210.00	89.540	158.760	6,481.598	5,371.598	-8,500.352	5,379.054	10,607.703	0.26109	-0.20067	0.06085
17,220.00	89.540	158.760	6,484.129	5,376.129	-8,500.352	5,379.054	10,607.703	0.26109	-0.20067	0.06085
17,230.00	89.540	158.760	6,486.660	5,380.660	-8,500.352	5,379.054	10,607.703	0.26109	-0.20067	0.06085
17,240.00	89.540	158.760	6,489.191	5,385.191	-8,500.352	5,379.054	10,607.703	0.26109	-0.20067	0.06085
17,250.00	89.540	158.760	6,491.722	5,389.722	-8,500.352	5,379.054	10,607.703	0.26109	-0.20067	0.06085
17,260.00	89.540	158.760	6,494.253	5,394.253	-8,500.352	5,379.054	10,607.703	0.26109	-0.20067	0.06085
17,270.00	89.540	158.760	6,496.784	5,398.784	-8,500.352	5,379.054	10,607.703	0.26109	-0.20067	0.06085
17,280.00	89.540	158.760	6,499.315	5,403.315	-8,500.352	5,379.054	10,607.703	0.26109	-0.20067	0.06085
17,290.00	89.540	158.760	6,501.846	5,407.846	-8,500.352	5,379.054	10,607.703	0.26109	-0.20067	0.06085
17,300.00	89.540	158.760	6,504.377	5,412.377	-8,500.352	5,379.054	10,607.703	0.26109	-0.20067	0.06085
17,310.00	89.540	158.760	6,506.908	5,416.908	-8,500.352	5,379.054	10,607.703	0.26109	-0.20067	0.06085
17,320.00	89.540	158.760	6,509.439	5,421.439	-8,500.352	5,379.054	10,607.703	0.26109	-0.20067	0.06085
17,330.00	89.540	158.760	6,511.970	5,425.970	-8,500.352	5,379.054	10,607.703	0.26109	-0.20067	0.06085
17,340.00	89.540	158.760	6,514.501	5,430.501	-8,500.352	5,379.054	10,607.703	0.26109	-0.20067	0.06085
17,350.00	89.540	158.760	6,517.032	5,435.032	-8,500.352	5,379.054	10,607.703	0.26109	-0.20067	0.06085
17,360.00	89.540	158.760	6,519.563	5,439.563	-8,500.352	5,379.054	10,607.703	0.26109	-0.20067	0.06085
17,370.00	89.540	158.760	6,522.094	5,444.094	-8,500.352	5,379.054	10,607.703	0.26109	-0.20067	0.06085
17,380.00	89.540	158.760	6,524.625	5,448.625	-8,500.352	5,379.054	10,607.703	0.26109	-0.20067	0.06085
17,390.00	89.540	158.760	6,527.156	5,453.156	-8,500.352	5,379.054	10,607.703	0.26109	-0.20067	0.06085
17,400.00	89.540	158.760	6,529.687	5,457.687	-8,500.352	5,379.054	10,607.703	0.26109	-0.20067	0.06085
17,410.00	89.540	158.760	6,532.218	5,462.218	-8,500.352	5,379.054	10,607.703	0.26109	-0.20067	0.06085
17,420.00	89.540	158.760	6,534.749	5,466.749	-8,500.352	5,379.054	10,607.703	0.26109	-0.20067	0.06085
17,430.00	89.540	158.760	6,537.280	5,471.280	-8,500.352	5,379.054	10,607.703	0.26109	-0.20067	0.06085
17,440.00	89.540	158.760	6,539.811	5,475.811	-8,500.352	5,379.054	10,607.703	0.26109	-0.20067	0.06085
17,450.00	89.540	158.760	6,542.342	5,480.342	-8,500.352	5,379.054	10,607.703	0.26109	-0.20067	0.06085
17,460.00	89.540	158.760	6,544.873	5,484.873	-8,500.352	5,379.054	10,607.703	0.26109	-0.20067	0.06085
17,470.00	89.540	158.760	6,547.404	5,489.404	-8,500.352	5,379.054	10,607.703	0.26109	-0.20067	0.06085
17,480.00	89.540	158.760	6,549.935	5,493.935	-8,500.352	5,379.054	10,607.703	0.26109	-0.20067	0.06085
17,490.00	89.540	158.760	6,552.466	5,498.466	-8,500.352	5,379.054	10,607.703	0.26109	-0.20067	0.06085
17,500.00	89.540	158.760	6,555.000	5,503.000	-8,500.352	5,379.054	10,607.703	0.26109	-0.20067	0.06085
17,510.00	89.540	158.760	6,557.530	5,507.530	-8,500.352	5,379.054	10,607.703	0.26109	-0.20067	0.06085
17,520.00	89.540	158.760	6,560.060	5,512.060	-8,500.352	5,379.054	10,607.703	0.26109	-0.20067	0.06085
17,530.00	89.540	158.760	6,562.590	5,516.590	-8,500.352	5,379.054	10,607.703	0.26109	-0.20067	0.06085
17,540.00	89.540	158.760	6,565.120	5,521.120	-8,500.352	5,379.054	10,607.703	0.26109	-0.20067	0.06085
17,550.00	89.540	158.760	6,567.650	5,525.650	-8,500.352	5,379.054	10,607.703	0.26109	-0.20067	0.06085
17,560.00	89.540	158.760	6,570.180	5,530.180	-8,500.352	5,379.054	10,607.703	0.26109	-0.20067	0.06085
17,570.00	89.540	158.760	6,572.710	5,534.710	-8,500.352	5,379.054	10,607.703	0.26109	-0.20067	0.06085
17,580.00	89.540	158.760	6,575.240	5,539.240	-8,500.352	5,379.054	10,607.703	0.26109	-0.20067	0.06085
17,590.00	89.540	158.760	6,577.770	5,543.770	-8,500.352	5,379.054	10,607.703	0.26109	-0.20067	0.06085
17,600.00	89.540	158.760	6,580.300	5,548.300	-8,500.352	5,379.054	10,607.703	0.26109	-0.20067	0.06085
17,610.00	89.540	158.760	6,582.830	5,552.830	-8,500.352	5,379.054	10,607.703	0.26109	-0.20067	0.06085
17,620.00	89.540	158.760	6,585.360	5,557.360	-8,500.352	5,379.054	10,607.703	0.26109	-0.20067	0.06085
17,630.00	89.540	158.760	6,587.890	5,561.890	-8,500.352	5,379.054	10,607.703	0.26109	-0.20067	0.06085
17,640.00	89.540	158.760	6,590.420	5,566.420	-8,500.352	5,379.054	10,607.703	0.26109	-0.20067	0.06085
17,650.00	89.540	158.760	6,592.950	5,570.950	-8,500.352	5,379.054	10,607.703	0.26109	-0.20067	0.06085
17,660.00	89.540	158.760	6,595.480	5,575.480	-8,500.352	5,379.054	10,607.703	0.26109	-0.20067	0.06085
17,670.00	89.540	158.760	6,598.010	5,580.010	-8,500.352	5,379.054	10,607.703	0.26109	-0.20067	0.06085
17,680.00	89.540	158.760	6,600.540	5,584.540	-8,500.352	5,379.054	10,607.703	0.26109	-0.20067	0.06085
17,690.00	89.540	158.760	6,603.070	5,589.070	-8,500.352	5,379.054	10,607.703	0.26109	-0.20067	0.06085
17,700.00	89.540	158.760	6,605.600	5,593.600	-8,500.352	5,379.054	10,607.703	0.26109	-0.20067	0.06085
17,710.00	89.540	158.760	6,608.130	5,598.130	-8,500.352	5,379.054	10,607.703	0.26109	-0.20067	0.06085
17,72										



EQT
Survey Report

Database:	EDM Definitive	Local Co-ordinate Reference:	Well M07H - Slot M07H
Company:	EQT (Chevron Data) 02-13-21	TVD Reference:	GL at 1125.00' & 25' KB @ 1149.998usft
Project:	Marshall County, WV Chevron	MD Reference:	GL at 1125.00' & 25' KB @ 1149.998usft
Site:	Hines Pad EQT	North Reference:	True
Well:	M07H	Survey Calculation Method:	Minimum Curvature
Wellbore:	OH		
Design:	Hines M07H As Drilled		

Measured Depth (usft)	Inclination (°)	Azimuth (°)	Vertical Depth (usft)	Subsea Depth (usft)	+N/-S (usft)	+E/-W (usft)	Vertical Section (usft)	Dogleg Rate (%/100usft)	Build Rate (%/100usft)	Turn Rate (%/100usft)
10.000	28.900	171.770	6,453.280	5,403.282	-10.405	8.392	12,625.50	1.1190	-0.0771	106.77
10.000	19.999	69.447	6,454.764	5,391.791	-10.405	8.392	12,625.50	1.1190	-0.0771	106.77
10.000	19.999	171.770	6,456.248	5,380.299	-10.405	8.392	12,625.50	1.1190	-0.0771	106.77
10.000	28.900	171.770	6,457.732	5,368.807	-10.405	8.392	12,625.50	1.1190	-0.0771	106.77
18,629.90	28.980	156.830	6,459.207	5,309.210	-10.405	8.392	12,375.00	1.0000	-0.1707	-1.4157
10.000	19.999	171.770	6,460.691	5,297.718	-10.405	8.392	12,468.55	0.9836	0.0000	0.0000
10.000	19.999	69.447	6,462.175	5,286.226	-10.405	8.392	12,557.97	1.0000	0.0000	0.0000
Final Survey-18629' MD @ 6462' TVD										
10.000	28.980	156.830	6,463.776	5,313.778	-10.405	8.392	12,644.86	1.0000	-0.1400	1.0581
10.000	19.999	171.770	6,465.260	5,313.780	-10.405	8.392	12,645.81	1.0000	-0.1456	1.0502
Projection to TD/ Deepest Point of Well-18629' MD @ 6462' TVD										
10.000	28.980	156.830	6,466.744	5,314.879	-10.405	8.392	12,649.32	0.0000	0.0000	0.0000

Target Name	- hit/miss target	- Shape	Dip Angle (°)	Dip Dir. (°)	TVD (usft)	+N/-S (-127.129)	+E/-W (-12.340)	Northing (usft)	Easting (usft)	Latitude	Longitude
Hines 74.750'			0.000	0.000	4,073.64	-127.129	-12.340	614,290.200	1,632,039.291	39.9057560	80.6993920W
					act: well path misses target center by 1,457usft at 4080.97usft MD (4073.643 TVD; -127.768 N, -12.071 E)						
Hines 74.750'			0.000	0.000	6,333.33	-611.951	1,629.33	614,774.750	1,631,580.15	39.904124	80.6993920W
					act: well path misses target center by 1,392usft at 7449.239usft MD (6333.198 TVD; -611.802 N, 1535.491 E)						
Hines 74.750'			0.000	0.000	6,464.55	-11,108.37	0,123,965	602,217,885	1,638,038.451	39.8756374	80.6774622W
					act: well path misses target center by 50.00 at 18842.982usft MD (6464.577 TVD; -11,028.00 N, 6134.235 E)						

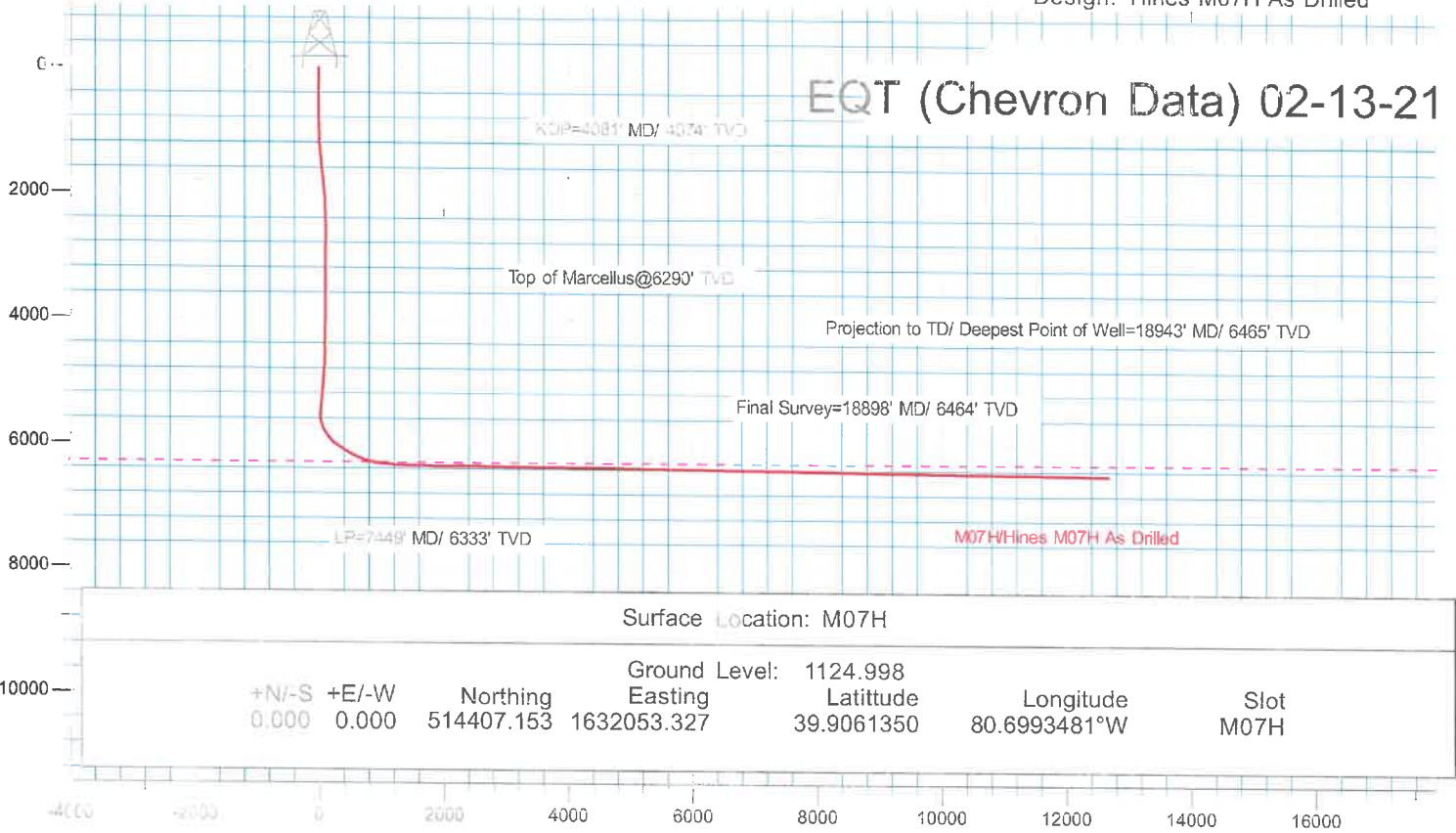
Measured Depth (usft)	Vertical Depth (usft)	Name	Lithology	Dip (°)	Dip Direction (°)
1,038.846	6,255.600	Top of Marcellus @ 6290' TVD		0.0000	



KB Elevation= GL at 1125.00' & 25' KB @ 1149.998usft
 Ground Elevation= 1124.998
 All measurements were taken from KB Elevation

Project: Marcellus County, PA - Chevron
 Site: Hines Pad EQT
 Well: M07H
 Wellbore: OH
 Design: Hines M07H As Drilled

EQT (Chevron Data) 02-13-21



DESIGN TARGET DETAILS

Name	TVD	Northing	Easting	Latitude	Longitude
Hines 7H KOP	4073.648	514280.200	1632039.291	39.9057860	80.6993920°W
Hines 7H LP	6333.161	513774.763	1633580.151	39.9044549	80.6938760°W
Hines 7H BHL	6464.550	503217.885	1638038.451	39.8756374	80.6774923°W

